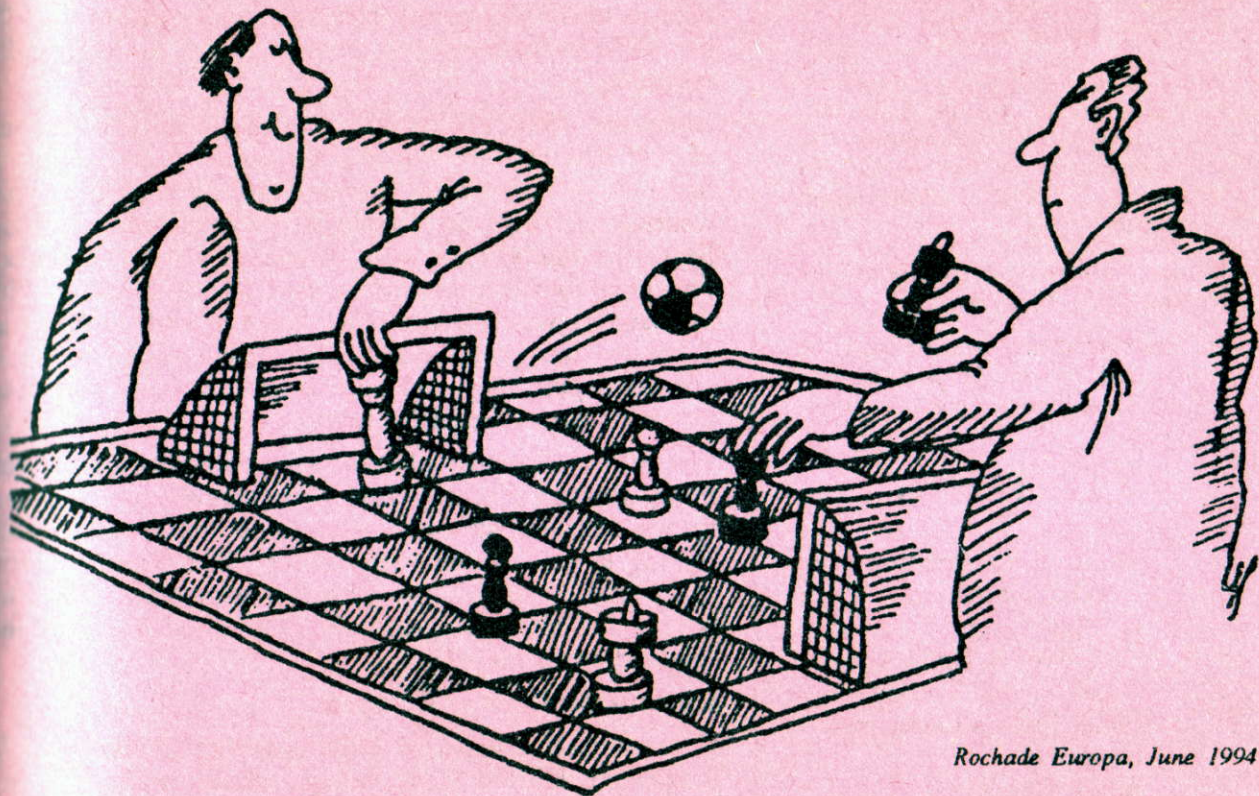


No: 101, January 1995

Bristol CHESS TIMES

The Magazine of the Bristol & District Chess League

80p



Rochade Europa, June 1994

In this issue:

Hanham, 4NCL reports

Hungover in Hannover

Fantasy Chess, Prize crossword

***League results and tables, Junior Chess,
etc.***



Bristol CHESS TIMES

Editor: John Richards
7 Maycliffe Park, Bristol,
BS6 5JH. Tel: 0117 955 1912
e-mail: john@r-cube.demon.co.uk

Subscriptions: £8.00 for ten issues (posted to a home address) or £6.00 for ten issues (collected from a Bristol League club). Send cheques payable to the Bristol & District Chess League to the Editor.

Printed by: Everest, 195 Cheltenham Road, Bristol BS6 5QX

Advertising: rates are available on request from the Editor.

Bristol Chess Times is the official magazine of the Bristol & District Chess League, but the opinions of the contributors do not necessarily reflect those of the Management Committee.

Games listings and diagrams are created using ChessBase.

No parts of this magazine may be reproduced without the prior express permission of the League. All rights reserved. © 1995.

CONTENTS

- 2 Editorial
- 3 4NCL in Cheltenham
- 4 Youth triumphs in Hanham Open
- 7 Hungover in Hannover
- 8 Nunn wins at Torbay
- 9 Frank Palm's Letter from Hannover
- 12 Junior Chess
- 13 Letters to the Editor
- 14 Books
- 16 New Year Prize Crossword
- 17 Bristol Fantasy Chess
- 18 Results
- 19 League Tables
- 20 Diary, League Notices

Next issue: 7th March.

Please send in articles, news, etc. for the next issue by 21st February.

EDITORIAL

A good year, but not a classic

1994 was never going to equal 1993 as a chess year. How could it possibly compete with the fun, stupidities, hype and complicated plot twists of the Short-Kasparov match? Of course, it didn't, but there were still a number of incidents to remember.

Kasparov was accused of cheating against Judit Polgar, got beaten by a computer program, and sulked. Short and Adams got knocked out of one and two world championships, respectively, and pundits started bemoaning the decline of English chess. Gata Kamsky stepped up a gear and showed he could become one, and perhaps both, of the world champions. He also put the boot in to the PCA with his infamous open letter while his father, Rustam, put the boot in to practically everyone.

Just when 1994 looked like finishing with no outbreak of real silliness, we had the Olympiad team row with Short doing an excellent impression of a ten year old wanting his own way. To the BCF's great credit, it stood firm. Eventually, egos were pampered and Short played. Finishing fourth after a poor start (fancy drawing with Scotland!?) was a great result for England, and it was so nearly the gold medals. Thus, 1994 ended with the pundits saying they had told us there was no real need to worry about English chess.

The BCT Personality of the Year award was a close run thing. Rustam Kamsky had good support and Campomanes finished strongly with some unbelievable vote rigging to get himself reelected as FIDE President. But in the end it was Murray Chandler who was the worthy winner for his principled refusal to stand down as the England team captain.

Championship is wide open

Give yourself a shock by looking at the Division 1 table (page 19). Clifton A in bottom place at the halfway stage is almost unbelievable. The Clifton hegemony appears to be finally over, though I'm sure they won't still be in last place at the end of the season - will they? The championship race is really wide open, with Grendel, Bath, Horfield, South Bristol, and holders Downend all in with a chance.

Rapidly aging

In the last issue, the gremlins really got in. Melanie Buckley's age was given as 9 in the Editorial, 11 in the Junior Column, and 12 in the Grading List. The latter is correct. My apologies to Melanie, even though she graciously said I didn't have to bother.

John Richards

New players score well in Cheltenham

Roy Phillips



The second 4NCL weekend (26-27 November) was held at the headquarters of Eagle Star in Cheltenham. It was an excellent venue; the playing conditions were good, and a free finger buffet was provided on both days.

Our match on the Saturday was against the South Wales Dragons. This was a fairly evenly matched contest on paper, but I fancied our chances of getting a result. Most of the games were tight and could have gone either way. However, luck wasn't on our side and those delicately balanced games went the wrong way.

Bristol & District		S Wales Drgns
C Beaumont	0-1	J Cooper
A Karlsson	1-0	S Zeidler
G Wall	0-1	D James
R Phillips	0-1	C Morris
M Binks	½-½	F Raynor
T Mordue	1-0	P Richmond
J Rudd	0-1	?
M Buckley	0-1	D Adams
	2½-5½	

Despite this unexpected loss (for me, at least) morale didn't seem too damaged on the Sunday. This time, playing against Mike Truran's Witney, everyone was hyped up for battle. But fortune had cast its die, and the story was similar to Saturday's. This time some tricky positions were defended resiliently by our opposition and those extra half points made the difference.

Bristol & District		Witney
C Beaumont	½-½	S Ansell
A Karlsson	½-½	J Cobb
G Wall	½-½	C Cobb
R Phillips	0-1	P Brooks
M Binks	½-½	T Headlong
T Mordue	½-½	R Haydon
J Rudd	½-½	M Truran
M Buckley	0-1	F Cohen
	3-5	

Despite what I considered to be a pretty awful weekend, there were some excellent individual performances. In fact, the three new players in the team were the stars: Tyson Mordue and Karlsson scored 1½/2 and Mike Binks had two solid draws. The best achievement was Tyson's victory over Peter Richmond.

T Mordue - P Richmond Bristol - Sth Wales Dragons, 4NCL 1994

1.e4 c5 2.♘f3 ♘c6 3.b3 ♘f6 4.e5 ♘d5 5.♙b2 e6 6.♙b5 ♙b6 7.♙xc6 ♙xc6 8.0-0 ♙e7 9.d3 f5 10.♙d2?! b6 11.c4 ♘c7 12.♘c3 ♙b7 13.♙fd1 g5 14.♙e2 g4 15.♘e1 h5 16.d4 cxd4 17.♙xd4 ♙c5 18.♙ad1!

White is happy to give up the exchange. Black's queen is going to find herself short of squares.

18...♙xd4 19.♙xd4 ♘a6 20.♙d6 ♙c8 21.♘b5 ♙d8 22.♘d3 ♙g5 23.♙c1 ♙g7 24.♘f4 ♙e4 25.♙b2 h4 26.♙d2 ♙c6 27.♘d6+ ♙f8 28.♙e3 [28.♘xf5 ♙g5] 28...♙h7 29.♙a3 ♙g7 30.b4 ♙a4 31.b5 ♘b8 32.♘xe6+ dxe6 33.♙g5+ ♙g6 34.♙e7+ ♙g8 [34...♙h6 35.♘f7+] 35.♘e8?

There are better moves: 35.♘c8 blocking the rook's defence of f8, or 35.♙b7. If 35.♘e4 ♘f6+ then 35...♘d7

35...♘d7 36.♘c7 ♘xe5 (♘...♘f3+) 37.♙d6 f4 38.♙c1 ♙g7 39.♙xe6+ ♘f7 40.♘xa8 ♙h6 41.♙e8+ ♙h7 42.♙xh6+ ♙xh6 43.♙e6+ ♙h5 44.♘c7 ♘g5 45.♙e8+ ♙h6 46.♘d5 ♙c2 47.♙c6+ ♙h7 48.♘f6+ ♙h6 49.♘e8+ ♙g6 50.♙xf4 ♙d3 51.♘f6 ♙e2 52.♘e4 1-0

I would also like to mention that some Bristol League players made the effort to

continued on page 6

Youth dominates Hanham Open

John Richards & Steve Boniface

Hanham's 7th Congress (4-6 November) was a big success despite a drop in numbers. The prizes were particularly impressive: a total of £1790 plus 22 Batsford books were awarded. The Grange School venue was used for the second time and the Congress has settled in well. Richard West, the Congress Treasurer, said "We had 182 entrants which is down from last year's figure of just over 200. Excluding the books donated by Batsford, the prizes exceeded 80% of the entry fees. It is only thanks to Batsford's sponsorship and the hard work of many volunteers, including the wives who organised the catering, that we stayed in the black and can afford to do it again in 1995."

I would like to also thank the caterers. Without their efforts to maintain my caffeine levels it's doubtful I would have done so well in the Major. More of that in the next issue.

The Open was bereft of GM's and IM's. Strange that a £300 first prize could not tempt at least one out for a bit of pocket money. Despite, or rather perhaps because of, their absence, the Open was hotly contested and ended with a four way tie for first and £150 each. The Cobb household did especially well out of this, walking off with two of the four shares. Hunting in a pack is obviously the way to do it. It's a shame that neither of my two brothers is any good at chess.

Steve Boniface reports on the Open:

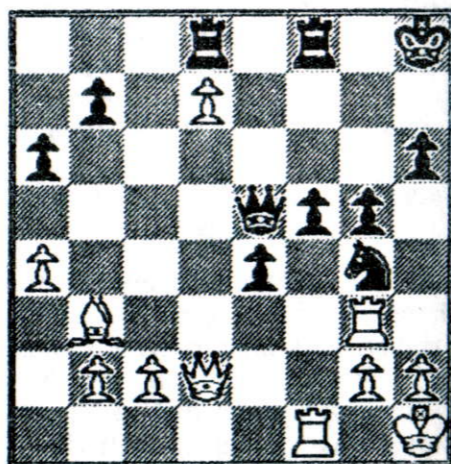
The seventh Hanham Open attracted only 31 players his year, although this became a power of two with the brave transfer of Thierry Le Roux from the Major section on the Saturday. It was to be a tournament of twin themes: youth and the new 4NCL team Witney. In the end the contest was

dominated by both. The main point of interest seemed to be the £100 grading prize, eventually won by Jerry Humphreys. Only two 200+ players took part: ex-Hanham club member Gerald Moore, and James Cobb of Swindon who took a bye on the Friday evening. In fact a total of ten byes were used, given a very empty look to the first round. Gerald Moore won safely enough, as did most of the seeds. Only William Giblin succeeded with the Black pieces.

Moore's supremacy was short-lived. Humphreys beat him well in round two, and Giblin was held by 14-year-old Rohan Churm.

J Humphreys - G Moore
Hanham op (2) 1994

1.e4 c5 2.♘f3 e6 3.d4 cxd4 4.♗xd4 ♖f6 5.♗c3 d6 6.♗e2 ♗e7 7.♗e3 0-0 8.0-0 a6 9.f4 ♗c6 10.a4 ♘c7 11.♖h1 ♗d7 12.♙e1 ♗xd4 13.♗xd4 ♗c6 14.♗d3 e5 15.fxe5 dxe5 16.♙g3 ♗d7 17.♗e3 ♖h8 18.♗f5 g6 19.♗f2 ♗c5 20.♗af1 ♗xe3 21.♙xe3 f6 22.♙h6 ♙d6 23.♗f3 ♙e7 24.♗d5 ♗xd5 25.exd5 f5 26.♗g3 e4 27.♗c4 ♗e5 28.♗b3 ♗g4 29.♙f4 [29.♙d2 might be better] 29...g5 30.♙d2 h6 31.d6 ♙e5 32.d7 ♗ad8



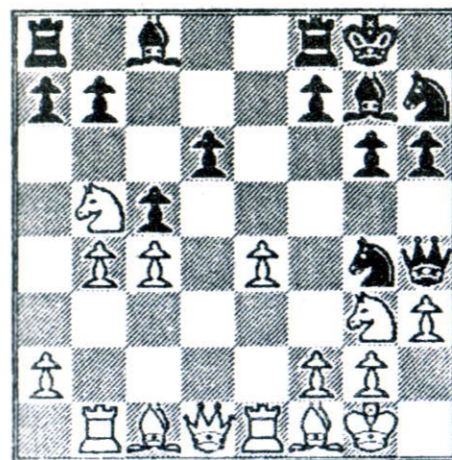
33.♗xg4! fxg4 34.♗xf8+ 1-0
If 34... ♗xf8 35.d8♙ ♗xd8 36.♙xd8+

♗g7 37.♙g8+ ♗f6 38.♙f7+#

If Moore expected an easy next game, he was disabused by Dave Osborne. The clock intervened at the end, several moves before the required 42. Roy Phillips was held by Humphreys, as was Giblin by Headlong, and Andrew Greet by Charles Cobb. Brother James beat Saqui with a clever combination.

C White - R Haydon
Hanham op (3) 1994

1.d4 g6 2.♗f3 ♗g7 3.c4 d6 4.♗c3 ♗d7 5.e4 e5 6.♗e2 ♗gf6 7.0-0 0-0 8.♗e1 c6 9.♗f1 h6 10.♗b1 ♗h7 11.b4 exd4 12.♗xd4 c5 13.♗de2 ♗e5 14.♗b5 ♙h4 15.♗g3 ♗g4 16.h3



16...♗xf2 17.♙xd6
[17.♗xf2 ♗e5 18.♗b3 f5]
17...a6 18.♗xf2 axb5 19.♙xc5 ♗g5 20.♗b3 ♗e6 21.♙xb5 ♗xa2+ 0-1.

With seven players on 2½, round four was to sort out the serious contenders. The two challengers turned out to be James Cobb and Roy Phillips. Moore couldn't even win on board 10, being held by D Grossett (131!). For that and his next-round win Grossett was awarded a special 'upset' prize.

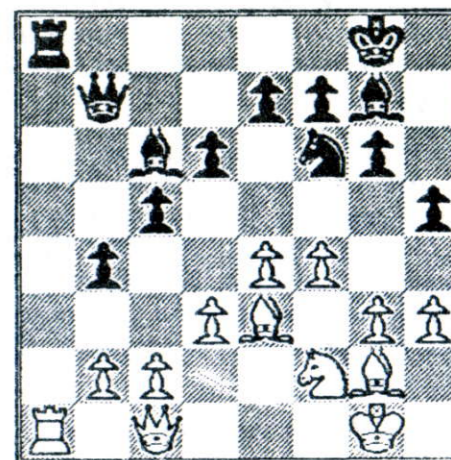
J Cobb - T Headlong
Hanham op (4) 1994

1.d4 d5 2.♗f3 c5 3.e3 ♗c6 4.c4 e6 5.♗c3 ♗f6 6.a3 a6 7.b3 ♗d6 8.♗b2 0-0 9.♗d3 b6 10.0-0 ♗b7 11.♙e2 ♙e7 12.♗fd1 ♗fd8 13.h3 h6 14.cxd5 exd5 15.♗a4 ♗d7

16.♗f5 ♗cb8 17.dxc5 bxc5 18.♗ac1 d4 19.♗d3 dxe3 20.♙xe3 ♙xe3 21.fxe3 ♗c6 22.♗f5 ♗de5 23.♗xe5 ♗xe5 24.♗xd6 ♗xd6 25.♗xe5 ♗d2 26.♗c2 ♗d5 27.♗xc5 ♗ad8 28.♗d4 ♗xc5 29.♗xc5 ♗c8 30.♗xc8 ♗xc8 31.b4 ♗c6 32.♗f2 f6 33.♗f3 ♗f7 34.♗e4 ♗e7 35.♗d5 ♗d6+ 36.♗c4 g5 37.♗e4 ♗e6 38.♗xf6 ♗c6+ 39.♗d3 ♗e6 40.♗e4 ♗f5 41.g4+ ♗g6 42.♗c5 h5 43.a4 1-0.

R Churm - R Phillips
Hanham op (4) 1994

1.e4 c5 2.♗c3 ♗c6 3.g3 h5 4.♗g2 g6 5.d3 ♗g7 6.f4 d6 7.♗f3 ♗d7 8.h3 ♙c8 9.♙d2 ♗d4 10.♙f2 b5 11.♗e3 ♗xf3+ 12.♙xf3 ♗c6 13.♙f2 b4 14.♗d1 ♗f6 15.0-0 0-0 16.♙d2 a5 17.a3 ♙b7 18.axb4 axb4 19.♗f2 ♗xa1 20.♗xa1 ♗a8 21.♙c1



21...c4 22.♗d2 ♗xa1 23.♙xa1 b3 24.♙c1 bxc2 25.♙xc2 cxd3 26.♗xd3 ♗xe4 27.♗xe4 ♗xe4 28.♗h2 ♙b5 29.b4 ♗xd2 30.♙xd2 ♙d5 31.♙c2 ♗f6 32.♗f2 ♗g7 33.♙e2 ♗d4 34.♗e4 e6 35.b5 ♗b6 36.♙b2+ e5 37.♗d2 ♙d3 38.♗b1?? ♙f1! 39.♙g2 ♙xb1 40.g4 h4 41.f5 ♙xb5 42.fxg6 fxg6 0-1.

The final session was rather an anti-climax. Phillips and James Cobb drew to ensure a share of first prize, being joined by the other Cobb, who beat team-mate Haydon, and Greet, who forced a pawn through against Dilleigh.

Steve Williams should have joined them by beating Lilley, but messed up an apparently over-whelming position which blind Graham defended superbly in time trouble.

Nevertheless Williams took the best junior prize (all the other juniors finished above him!). In spite of losing to Humphreys, Churm won the prize for best grading performance. The final Batsford award went to Derek Pugh of Grendel who, despite getting savaged in rounds one and two, won the last three to take the Slow Starter Prize.

The next issue will have a report on the Major, plus more games from the Open.

Open: 1= C Cobb, J Cobb Swindon, A Greet Truro, R Phillips Grendel 4 (£150 each). Grading: J Humphreys Downend 3½ (£100). Books: D Pugh Grendel, R Churm, D Grossett Clifton.

Major: 1 J Richards Horfield 5 (£200); 2= T Matko Cranfield, R Goodfellow Tunbridge Wells, N Burris Solihull, J Marshall Caldicott, T Woodward Trowbridge 4 (£48 each). Books: L Wood, D Thomas Harambee, J Wolfenden, B Higgins Nailsea, L Debbage Swindon.

Intermediate: 1 A Smith Cossham (£150); 2= R Allen Clifton, M Consadine Penwith, C Lim Barnet, B Brierly Burnham on Sea (£43.75 each). Books: A Willis, M Taylor, T Langdon Cossham, M White, P Spiller Clevedon, R Scott. Cosmo Lim declined to accept his prize in favour of S Thacker Peterborough.

Minor: 1 M Bridgeman Grendel (£100); 2= I Rescorla Penwith, M Jacobs Bath, J Risdon South Bristol (£50 each). Ungraded: C Morgan (£25). Books: N Watson, R Pritchard, T Bourne Opening Moves, D Scott, M Pritchard, Maya Buckley, D Levine, R Williams.

4NCL at Cheltenham

continued from page 3

come up to Cheltenham. Thank you for your support. Finally, I would like to point out that, despite our record so far, we currently stand above Invicta Knights in the league table - the team which won the event last year. It is certainly wide open this year and there are eight matches still to go - keep battling! The next 4NCL weekend is 21/22 January in Bridgend.

Giant-killings in KO Cup

It has been a cup with some surprises this season. There was a minor shock when second division Cossham knocked out first division Hanham, but the big upset came in the second round when Thornbury demolished league champions, Downend, by the impressive score of 5½-2½.

Along with the two second division sides, Civil Service of Division 5 has also survived to the last eight. The draw was not particularly kind, though both Cossham and Thornbury could perform some more giant-killing against the University and South Bristol, respectively.

The draw for the quarter-finals of the Bristol KO Cup is:

Grendel v Horfield* (23 Jan); University v Cossham (26 Jan); Thornbury v South Bristol (23 Jan); Bath or Clifton v Civil Service (25 Jan or 26 Jan).

Individual KO tries new idea for quick results

The Bristol Individual KO is underway with 18 entrants. This year it has a new format; instead of one game under normal time limits, there are two quickplay games of 30 minutes each. If the score is 1-1, then two further games are played with 10 minutes on the clock. If still level, there is a final tie-break where White gets 6 minutes to Black's 5, but White has to win to go through.

Round 1: R Phillips 2 M Pritchard 0; J Richards 3 D Thomas 1.

Round 2: J Humphreys v S Mills; C Carter v H Millbank; P Jones v J Richards; R Pritchard 0 L Savery 2; R Phillips v M Gingell; G Strickland v D Pugh; M Collier v J Johnson; J Nichols v T Mordue.

Results to be in by 15th January.

Hungover in Hannover

Steve Boniface concludes the story of the 1994 Bristol-Hannover exchange.

Having been suitably refreshed on the banks of the Steinhuden Lake, we now continued the trek round the water, being as far from civilization as possible. One could only hope there were more hospitable places on the East shores. Sadly, this proved not to be the case, and refreshment was not forthcoming until we hit Steinhuden village itself late in the afternoon. A hurried Greek meal, then a frantic dash for a bus to connect with the train back to Hannover left our nerves shattered.

Which is probably why we didn't perform too well on the Monday evening. This was a four team tournament which featured the University and the "Whites & Blues" from the local league as well as Hannover and ourselves. The format was three rounds of twenty minutes each per player. In a tactical move, I put myself on board four and switched the Chris's round.

We started off against the W & Bs and got beaten 3½-1½ with only Chris Hunt winning. In the second round we pulled ourselves together and drew 2½ each. The highlight was an excellent win by Chris Weeks over FM Michael Geveke despite being in severe time-trouble. Although this result was too late for us, it did mean that Hannover had to beat White and Blues by two clear points, which they duly did. We saw off the University 3-2 and not too convincingly, though Chris Hunt made his personal score 3/3. Our third place was understandable as most of us were legless even before we started drinking!

Tuesday was more serious in a different way. We met the Burgermeister (Mayor) who made encouraging noises about the future of the Exchange. We thanked the Council for their hospitality and hoped that everything went well in the imminent elections. Afterwards we headed South in a mini-bus for Hamelin. There, Pied Tour Guide Frank Palm was warned not to test

our feet too much and so, unsurprisingly, we spent most of the day on the road. The brief look at the town showed some pretty buildings, though there was rather a chocolate-box feel.

The next stop was at a rock edifice to the West, where a number of stone monoliths soared a hundred feet into the sky. Bob Bagshaw flatly refused to climb, and sat at the bottom giving victory signs as we waved from the top. Attempts to encourage Frank to leap from one outcrop to the other failed.

A short description of Frank Palm is not out of place here. He not only founded the Exchange, he wrote his doctoral thesis on the whole concept between the two cities. His boundless enthusiasm ensures that the event goes ahead each year, and there would be serious doubts about its continuation in his absence. However, he sometimes overlooks that a rapacious desire for long walks and heavy culture is not the normal need of a Bristol chess player! Fortunately he does understand our dietary requirements and normally carries a remarkable supply of liquid refreshment in his satchel, so is soon forgiven.

Our next stop that evening was a preserved village at Dortmund. This housed buildings from 1600 onwards, and gave a fascinating glimpse of the past. Some were still in use, though the bar was sadly closed by the time we reached the furthestmost point of the compound. By now dusk was falling, the satchel was empty, and various unsavoury noises were being heard from tired Englishmen. Frank had apparently negotiated a cheap rate for us on the grounds that one of our party was handicapped. It seems that Bob's grey hair provided sufficient evidence, and the owner limped obligingly back with us to the bus.

The final visit was to the delightful Lemgo, where the beauty of the buildings surpassed even that of Hamelin. We walked for a mile admiring the perfectly preserved frontages, but also keeping a keen eye out for any

likely hostility. In the end, the after-effects of the lunchtime fish forced Chris Hunt to dive into a nearby tavern, and we gratefully followed; save for Frank who was somehow avoiding finding anything useful. Refreshed by a variety of baguettes and washed down by some ridiculously small glasses, we tumbled back into the VW and slept most of the long ride back to Hannover.

Wednesday was the day for the major trip, to Hamburg. Frank had once lived there, and his wife works there still. Encouraged by the thought of any easy day, we piled into the microbus and took the pretty route north. The city is enormous; we took a train and two ferries from the centre but still didn't breach the western perimeter. The docks are massive, with freight and passenger ships as well as sailing craft. A short but interesting walk took us further west along the shores where the City Fathers built their summer houses. When we insisted on stopping for a cup of coffee, we discovered how they afforded it. Nearly six marks each! (About £2.40). For once Frank was right.

We caught a local bus back through the doubtful Reeperbahn (which looks pretty innocuous in daylight) and took in the War Museum which had some fairly nasty stuff in it. Fortunately we had to leave shortly after six and, in spite of getting lost in the city, hared down the Autobahn to return the bus with at least two minutes to spare.

The final day included a brief look at the Bahlsen biscuit museum - desperately interesting - then a few hours shopping for loved ones and family (except for Chris Hunt who was intent on re-stocking Threshers). Frank was very quiet today, clearly sad to see us go.

Our hosts were universally kind, thoughtful, and tolerant - one or two were woken up rather late by us on return - and looked forward to the return visit next year. We hope to do the same week in September for them, so if you are interested in hosting a Hannoverian guest for a week, please let myself or another member of this year's party know. Though some work is involved and late nights must be expected, we promise you will enjoy it.

'The Doctor' wins at sell-out Torbay

Torbay's 29th congress (18-20 November) repeated last year's success by being another sell-out. The limit of 250 entries was reached over a week early. I know, as I was one of the ones whose entry arrived too late, thus denying me the pleasure of winning the Major.

GM John Nunn and Aaron Summerscale shared the Open. I'd like to give more news and games, but the organisers sent me just the bare results. Here they are:

Open: 1= Dr J Nunn *London*, A Summerscale *Putney* 4½/5; 3= M J Franklin *Richmond*, A Karlsson *Exeter*, S Williams *Farnham* 4. Grading (U-176): D Littlejohns *Taunton* 3½. 48 players.

Major: 1 J B Hawson *Sutton* 4½; 2= J A Spiegel *Southend on Sea*, R Harper *Eastbourne*, J Gorodi *Newton Abbot*, N Livesey *Whitney* 4. Grading prizes: (U-145) K Andrews *Hove*, T LeRoux *Burnham on Sea*, A Eagle *Reading*, T Fellows *Wolverhampton* 3½; (U-133) P Scott *Paignton* 3½. 62 players.

Intermediate: 1 N Bye *Hillingdon* 5; 2 N Chambers *Torquay* 4½; 3= W Jones *Bude*, N Commis *Fulham*, J Brief *Edgware* 4. Grading prizes: (U-112) M Pearson *London* 3½; (U-103) A Wright *Torquay*, M Callis *Chesterfield* 3. 68 players.

Minor: 1 B Roles *Chatham* 5; 2 J Wilson *Battersea* 4½; 3= K Wilkinson *Truro*, M Lightwood *Newport*, N Heywood *Halesowen*, S Cooke *Exeter*, L Levy *Loddiswell* 4. Grading prizes: (U-85) K Jones *Wallasey* 3½; (U-70) T Bagshaw *Truro*, J Francis *Birmingham*, D Gibbs *Cardiff*, R Murr *Paignton* 3. 72 players.

John Richards



Frank Palm's LETTER FROM HANNOVER

The English in the Bundesliga

Until 1979, the German top teams played in four geographically defined first divisions with eight teams each. The four winners played for the German team championship in a three-round all-play-all event. This system bore the disadvantage of sporting injustice; e.g. the second, and sometimes even the third, of Division West were in fact stronger than the winners of the others, but nevertheless excluded from the final show-down. So, in 1980, the German Chess Federation changed the system by taking the four strongest teams of each division to form one nationwide league of 16 teams, the Bundesliga, and four second Bundesligas of 10 teams each below it.

The main idea, however, was to raise the standard of top chess in Germany; both to make chess more attractive to the public, and to offer chances to budding talents to play top international players, not only in tournaments abroad but also in the German top division. A team may include three foreigners in its list of 20 players maximum. In a match (eight boards) two of the three may be fielded. At the beginning, only a few non-German players joined the Bundesliga: Spassky, Kavalek, Miles, Chandler and Hort were the most prominent among these pioneers.

The two English met on Board One in the 1981/82 season (comments by C D Meyer):

Murray Chandler - Tony Miles
BL, Hamburg SK-SG Koln-Porz 1981

1.e4 c5 2.♘f3 d6 3.d4 cxd4 4.♗xd4 ♕f6
5.♕c3 g6 6.g3 ♕c6 7.♗de2! ♗d7 8.♗g2
♜c8 9.h3 ♗g7 10.a4 0-0 11.♗f4 ♗b4
12.♗e3 ♗d8 13.♜d2 e5! 14.♗d3 ♕c6?

Better is 14...♗xd3+

15.♗h6 ♗xh6?! 16.♜xh6 ♗d4 17.0-0
♜c4 18.f4! ♗xc2

18...exf4 19.♗xf4 ♗xc2 20.e5!!+-

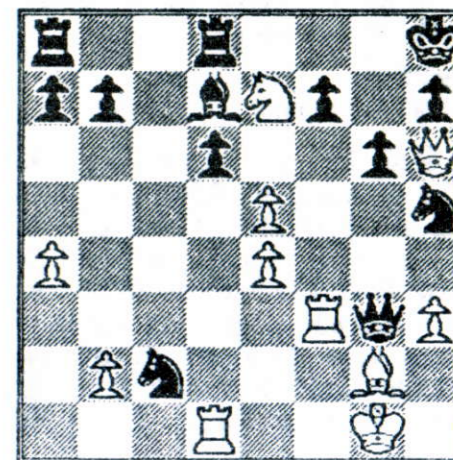
19.fxe5?!

Better is 19.♗ad1! ♗e3 (19...♗c6 20.♗f2)
20.fxe5!

19...♗h5??

[19...dxe5! promised a sufficient defence.
20.♗xf6 (20.♗ad1 ♗e6! 21.♜d2 ♗b4!)
♗e6!]

20.♗d5! ♜xd3 21.♗ad1 ♜xg3 22.♗e7+
♜h8 23.♗f3!



23...dxe5 24.♗xg3 ♗xg3 25.♜g5 ♗h5
26.♜xe5+ f6 27.♜c7 1-0.

As more and more clubs became supported by powerful patrons, a large number of members (e.g. Hamburg SK with more than 200), or financially safe as part of larger sports clubs like Bavaria Munich, most of them have been able to field foreign grandmasters on their top boards. After the opening of the Eastern borders the Bundesliga experienced a real invasion of Russian top players. However, the two most constant groups of chess mercenaries fighting in Germany during the last 14 years have been the Czechs and the English. Anthony Miles joined the Bundesliga for many years, and Murray Chandler and Dr John Nunn can be regarded as real veterans. The latter has played for Hamburg, Solingen, Munich, Hamburg again, and now Duisburg during the last ten years. Nigel Short was Solingen's top board for two seasons, but then stopped his engagement because "it's not

possible for me to produce a suitable intellectual performance at nine o'clock in the morning" (retranslated from German).

In the last season, newcomer Castrop-Rauxel (in the West German Ruhrgebiet) introduced William Watson and Daniel King into the Liga; Solingen added David Norwood, and Munich 1836 had Julian Hodgson, the Liga's top scorer - with 9/10 on board 3 he gained a performance of Elo 2805! This season one more English top player found his way into the Bundesliga: Solingen has improved its team by having Michael Adams on board one!

Now some examples of how well the English did last season:

G Beckhuis - John Nunn
BL HSK-Dortmund [1] 1993

1.d4 f6 2.c4 g6 3.c3 g7 4.e4 d6 5.f3 0-0 6.e2 e5 7.0-0 c6 8.d5 e7 9.c2 a5 10.a3 d7 11.b3 e8 12.b1 f5 13.b4 axb4 14.axb4 h8 15.c5 g8 16.c4 e7 17.b5 dxc5 18.b6 c6 19.d6 d8 20.e3 g6 21.cxe5 cxe4 22.cxe4 fxe4 23.cxd7 cxd7 24.cxc5 f6 25.h3 d5 26.g4 f7 27.c2 h5 28.e2 c3 29.bcl a2 30.cxa2 xa2 0-1.

Nunn's club (Hamburg SK) was not entirely happy with him, as from their point of view, "the Doctor" showed a lack of fighting spirit (some quick draws). The following draw, however, was more combative than many wins.

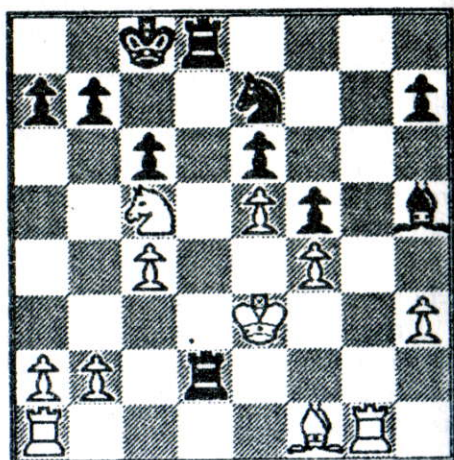
Alexei Shirov - John Nunn
BL HSK-Empor Berlin [1] 1993

1.d4 f6 2.c4 g6 3.c3 g7 4.e4 d6 5.e2 0-0 6.f3 e5 7.0-0 c6 8.d5 e7 9.e1 d7 10.e3 f5 11.f3 f4 12.f2 g5 13.a4 g6 14.a5 h8 15.c3 g8 16.c5 f8 17.c6 bxc6 18.c4 e7 19.cxc6 cxc6 20.dxc6 f6 21.c4 g6 22.h3 g4 23.fxg4 c4 24.hxg4 d4 25.e1 d5 26.exd5 f3 27.cxe5+ g7 28.cxc7+ g7 29.d4 d4 30.cxc7+ cxc7 31.cxc2 g5+ 32.f3 g3+ 33.c2 e2 e3+ 34.c1 d4+ 35.c2 cxc4 36.b3 c5 37.f4 f8 38.b4 e3 39.e4 f2+ 40.c3 f3 41.ea1 1/2-1/2

David Norwood demonstrated that even Alexei Shirov can be beaten by an Englishman.

David Norwood - Alexei Shirov
BL Solingen-Empor Berlin [2] 1994

1.g3 d5 2.g2 c6 3.d3 g4 4.h3 h5 5.f4 e6 6.f3 c5 7.e4 dxe4 8.dxe4 cxd1+ 9.cxd1 f6 10.e2 d7 11.e3 f5 12.e5 e7 13.c4 g5 14.cbd2 gxf4 15.gxf4 0-0-0 16.hg1 xe3 17.cxe3 c5 18.c4 d7 19.c2b3 cxb3 20.cxb3 hd8 21.c5 d2 22.f1



22...xb2 23.g7 b6 24.cxe6 d7 25.xh7 d5+ 26.cxd5 xh7 27.a6+ b8 28.dxc6 h2 29.e1 xh3+ 30.d4 c7 31.cxc7 cxc7 32.e6 a3 33.c4 a5 34.d5 e8 35.e5 h5 36.g1 f3 37.g7+ c8 38.d7 d5 39.xd5 xa2 40.e7 c7 41.f6 1-0.

The match between Castrop-Rauxel and Solingen was a purely English contest on the top boards which ended 2:0 for Castrop. On board one, Chandler (who was unlucky the whole season) lost on time against Watson, and on two, King refuted Norwood's dubious time-trouble sacrifice.

Danny King - David Norwood
BL Castrop_Rauxel-Solingen [2] 1994

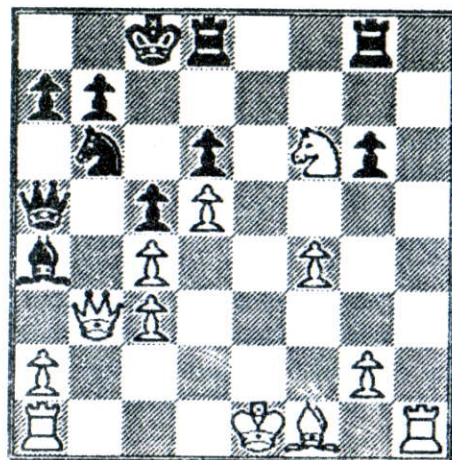
1.g3 d5 2.f3 c6 3.g2 g4 4.0-0 d7 5.d3 e5 6.cbd2 c6f6 7.h3 h5 8.e4 d6 9.exd5 cxd5 10.c4 d4 11.c2e2 0-0 12.g4 g6 13.c4 c5 14.cxc6 hxc6 15.b4 e6 16.c4 cxe4 17.cxe4 h4 18.f3 ae8 19.c5 b8 20.g3 e7 21.g5 b6 22.cxb6 axb6 23.d2 c8 24.fcl xc1+ 25.xc1 a7 26.g4 xa2

27.c1 a7 28.h4 d7 29.c6 b5 30.f3 d6 31.b6 c8 32.c6 c7 33.a6 e7 34.d5 f4 35.cxf4 exf4 36.g2 e1 37.cxd6 c1 38.c3 f1+ 39.g4 g1+ 40.g2 d1+ 41.f3 cxd3 42.d8+ h7 43.e4 c4 44.h5 f5+ 45.gxf6 e6+ 46.c4 1-0.

Now a Norwood brilliancy, produced in a bit of a bizarre way (regarded on the Continent as typically English):

S Loffler - David Norwood
BL Solingen-Zahlendorf [2] 1994

1.d4 g6 2.c4 g7 3.c3 c5 4.d5 f5 5.h4 xc3+ 6.bxc3 f6 7.h5 g8 8.hxc6 hxc6 9.f3 a5 10.c3 b3 d6 11.g5 cbd7 12.c2 b6 13.e4 d7 14.f4 fxe4 15.cxf6 exf6 16.cxe4 0-0-0 17.cxf6 a4



18.c3 g8 19.c4 de8+ 20.c2 d2 21.c3 f2+ 22.c1 c2 23.h8 xc3 0-1.

Versus Dortmund's number 1, Watson achieved a fine attack against an uncastled king:

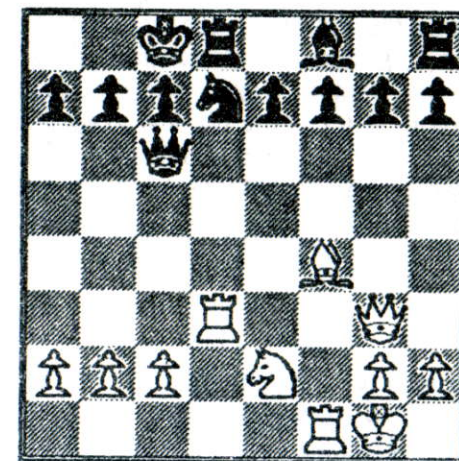
William Watson - G Beckhuis
BL Dortmund-Castrop_Rauxel [1] 1994

1.c3 d5 2.e4 e6 3.d4 f6 4.g5 dxe4 5.cxe4 e7 6.cxf6 gxf6 7.c4 b6 8.d5 f5 9.c3 f6 10.f3 b7 11.0-0-0 d7 12.b5 f8 13.c3 xc3 14.cxc3 g5+ 15.c1 f6 16.c3 g7 17.dxe6 d5 18.e7+ cxe7 19.cxc7 d5 20.c4 c8 21.c6 1-0.

And now two convincing victories by England's top scorer:

Julian Hodgson - A Kalka
BL Dortmund-Munich 36 [3] 1994

1.d4 f6 2.g5 e4 3.f4 d5 4.f3 f6 5.c3 f5 6.e4 dxe4 7.fxe4 xe4 8.cxe4 9.f3 cxd4 10.d1 a4 11.d3 c5 12.c2 cbd7 13.0-0 cxd3 14.cxd3 c6 15.g3 0-0-0



16.c3 b6+ 17.e3 d6 18.f2 f6 19.d3 c6 20.c4 e4 21.c5 e5 22.cxa7+ b8 23.fdl d6 24.c5 g4 25.a7+ c8 26.cxd6+ cxd6 27.c3+ c5 28.cxc5+ 1-0.

S Reschke - Julian Hodgson
BL Munchen 36-Koblenz [3] 1994

1.f3 d5 2.c4 d4 3.e3 c6 4.exd4 cxd4 5.cxd4 cxd4 6.c3 e5 7.d3 e7 8.e3 d6 9.c2 f5 10.e2 e7 11.0-0 0-0 12.c5 d8 13.b4 c6 14.c5 g6 15.c3 e8 16.cxf5 cxf5 17.fel c7 18.ad1 h5 19.a4 h4 20.e3 ad8 21.c1 h3 22.g3 cxd3 23.cxd3 e4 24.f4 cxf4 25.cxf4 exd3 26.e3 xc3 27.cxe3 g4 0-1.

Last but not least, here are the results of the English in the 1993/94 season:

	Club	Bd	W	D	L	Elo Perf	Elo Old
Dr John Nunn	Hamburg	1	2	4	0	2629	2590
William Watson	Castrop	1	3	5	2	2565	2550
Murray Chandler	Solingen	1	1	8	5	2450	2565
David Norwood	Solingen	2	5	6	3	2554	2515
Daniel King	Castrop	2	3	6	2	2527	2455
Julian Hodgson	Munich	3	8	2	0	2805	2625



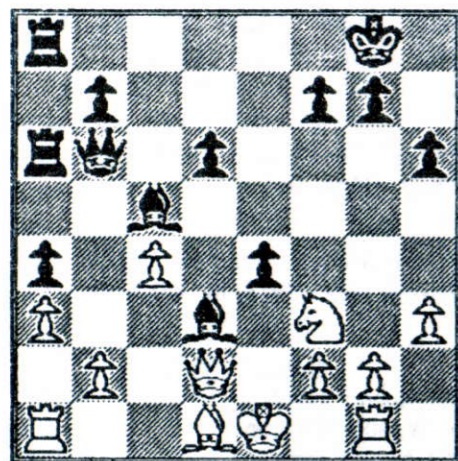
JUNIOR CHESS

Jerry Humphreys

A chance this month to look at one of Peter Chaplin's games from the British Championships. Apart from being Under 16 Champion, Peter is the highest graded junior in Avon, and has had a number of recent successes. In this game he uses an opening which is very popular among juniors, and reduces his opponent to complete hopelessness.

S Bhanshuly - P Chaplin
British U-16, Norwich 1994,
Budapest Defence

1.d4 ♖f6 2.c4 e5 3.e3 ♘c6 4.d5 ♘e7
5.♘c3 ♗g6 6.e4 a5 7.a3 ♘c5 8.♗f3 d6
9.h3 0-0 10.♗e2 ♗d7 11.♗g5 h6 12.♗d2
♗h5 13.♙c2 ♗hf4 14.♗xf4 ♗xf4
15.♗g1 a4 16.♗f1 ♙f6 17.♗e2 ♗a6
18.♗b5 c6 19.♘c3 ♗fa8 20.♗d1 ♙d8
21.♙d2 cxd5 22.♗xd5 ♗xd5 23.♙xd5?
♗c6 24.♙d3 ♙b6 25.♙e2 ♗xe4 26.♗a2
♗b1 27.♗a1 ♗d3 28.♙d2 e4 0-1



If 29.♗h2 ♗xf2+! 30.♙xf2 e3 wins the queen!

Hanham Chess Congress

Nine Bristol juniors played in this important local tournament, and curiously almost all finished on 50%. The best performance was Mike White, a recent signing to Downend, who won a prize in the Under 125. Full results were:

Major Peter Chaplin 2½/5.

Intermediate Mike White 3, Paul Spiller 2½,
Oliver Bright 2½, Matthew Parker 2½,
Simon Buckley 1½.

Minor Robert Pritchard 2½, Matthew Pritchard 2½, Tom Bourne 2½

Incidentally, there were five juniors in the Open this year, including three from Thamesdown Chess Club. I have noticed for several years that juniors who do well at chess tend to start playing in the occasional Open as soon as they can get away with it - usually when they have achieved a grade of around 120. Next year it would be nice to see a number of our own juniors attempting the Major and Open, and perhaps even taking a few points against the strong players.

Stroud Quickplay

We had ten juniors at Stroud this year, and achieved two prizes. Paul Spiller chose to play in the Under 125 rather than the Under 100, and was rewarded by coming second, losing only to Cossham's Anthony Smith. Full results were:

Under 125: Paul Spiller 4½/6 (2nd), Mike White 4, Melanie Buckley 4, Simon Buckley 3, David Buckley 2.

Under 100: Robert Pritchard 4½ (3rd=), Robert White 3, Neil Pearce 2, Ian Pearce 2, Sam Buckley 1½.

International News

Robert Pritchard has been selected to play for Wales against Scotland over the weekend 27th - 29th January, in Dumfermline. As part of their training for this event, the Welsh team have asked us to field a team against them for a friendly match, and this will be held at St Helens Primary School in Alveston on Saturday 14th January - spectators most welcome.

Letters to the Editor



Letters have been edited for the purposes of clarity and space.

Dear John,

Those of your readers who played in the Hanham 1993 Congress may be interested to know that their current published grades are incorrect. The reason for this is because the BCF have only recently received the results. This may please some people and irritate others!

Yours,

Richard Allen

p.s. I hope they have sent 1994 details!

So do I (I scored 5/5 this time)! I spoke to the League's Grading Officer, Ray Studer, who explained that he did not handle the Hanham results - they are the responsibility of the congress organisers. Hanham's Ian Biddick said the 1993 results had gone in late because of problems obtaining a computer to process the data. There should be no such hold-up this time, as a volunteer has been found to enter the results. (Ed.)

Subscribe now to...

Bristol
CHESS TIMES

"excellent coverage of local events."
British Chess Magazine

Send £8.00 for ten issues (posted to your home), or £6.00 for ten issues (sent to your Bristol League club) to:

The Editor, Bristol Chess Times,
7 Maycliffe Park, Bristol, BS6 5JH

Cheques or POs should be made payable to The Bristol & District Chess League.

Dear John,

Why is it that people who play a game which requires constant decision making appear to have great problems in making up their minds? I refer to chess-players entering on the day of a tournament.

Perhaps chess players are impulsive, this may be obvious in many ways (!), but it causes a huge headache for the controllers when 60% of the entrants turn up on the day. Now admittedly some players do arrive half an hour before the scheduled start, but the majority don't.

There are limits to how accommodating one can be, and I will always try to get as many people in as possible, but I fear that soon I may start to close the 'late entries' desk earlier in order to get going on time. This will mean that many will actually miss the first round, and therefore prejudice their chances of a prize.

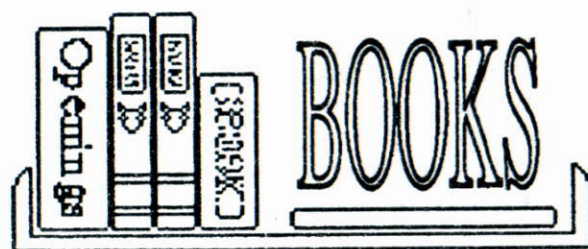
So this is a plea (to late entrants) from my writers-cramp wrist, please try your hardest to enter beforehand, even if it is only a phone call the previous evening - it saves much time and trouble and therefore makes the tournament more enjoyable, not only for you, but also the over-stressed controller.

Best wishes

Colin Axon

Colin is referring to quick-plays here, where many seem to have made a habit of entering at the last moment and making everyone else suffer by late starts to the rounds. My own view is that it is up to tournament organisers to solve this by raising late entry fees steeply and refusing any entries after a stated time. The important thing is to be clear on your policy on the entry form and then to enforce it rigorously and fairly, ignoring all heartbreaking stories about hold-ups on the M4, even if it's from a GM. Some people will get upset, but the benefits of having a well-run and punctual tournament will pay off in the long term.

I recently suffered by having my Torbay entry refused. Posted a week in advance it was already too late. But I couldn't complain. The entry form carried a warning that they had filled up early last year, and the same might happen this year. (Ed.)



WINNING WITH THE SPANISH

Anatoly Karpov

Batsford, 176pp, £12.99

As in his other two books on individual openings (*Beating the Grünfeld* and *Winning with the Petroff*) Karpov has selected 25 games to include as the 'primary' games in this monograph.

His claim in the preface, however, is that ten times that number of games are contained here when including the notes and analysis. This claim is not far wrong! The content is indeed excellent.

However, it is not by any means a complete guide to playing the Spanish. It concentrates on the most topical variations of recent times, including many of the encounters from the Kasparov v Karpov matches.

Karpov has not used the book as a means of showing just his own victories, but has included some of his losses and has remained objective throughout. Indeed, *Winning with the Spanish* gives guidance for both sides and Karpov's expertise in this opening means the material included is of the highest quality. This does mean, however, that it is quite heavy going as the detail is so great, and I certainly found the book tiring to read.

If you play the Spanish with either, or both sides, at every opportunity, this book will certainly be useful. If, however, you are playing the Spanish for the first time, the detail might be too great.

Roy Phillips

Content ♣♣♣♣

Readability & layout ♣♣♣

Overall ♣♣♣

WINNING WITH THE DRAGON

Chris Ward

Batsford, 208pp, £14.99

When I first saw this title I was sure it would be a popular choice, particularly among attacking players at club level.

My fear, however, was a great chunk of theory which I was sure it would be necessary to learn to have any hope of winning with the Dragon.

Upon flicking through the book, I was pleasantly surprised. Okay, there is some theory which should be memorised, but not as much as I had expected, and a good knowledge of the main ideas and recurring themes is more important. I once read that to learn an opening you should know as many typical positions and common themes as possible, but only as many theoretical lines as necessary. This seems to be what Chris Ward has attempted to give us with 'Winning with the Dragon' and, despite its highly theoretical nature, with some success.

The first two chapters, 'Introducing the Dragon' and 'Important Dragon Concepts' are excellent and give some essential tips before the following chapters go into the finer points of each variation.

I found the structure of the book excellent and the language clear and concise, making the book very easy to read.

A word of warning, however. You can win or lose in 20 moves in the Dragon and mastery will not come instantly. You more often than not need nerves of steel and, as the author says, if you do take up the Dragon, your chess will never be quite the same again!

Roy Phillips

Content ♣♣♣♣

Readability & layout ♣♣♣♣♣

Overall ♣♣♣♣

COMPREHENSIVE CHESS COURSE

Roman Pelts & Lev Alburt

Batsford, 1992 424pp, £14.99

If I wanted my child to learn Latin, I would take him to a school where he would be taught conjugation and declension, vocabulary and grammar in systematic order. If I wished him to learn golf, however, I would take him to the putting green, where he would learn how to get the ball into the hole using fewer strokes than his opponents. Which approach should one take when teaching chess?

Comprehensive Chess Course is a distillation of the methods of the country which has been most successful in teaching chess to juniors, as it is based on the methods of Russian trainer Roman Petts. It is very much the chess equivalent of the Latin textbook, complete with homework and review questions, and with, for example, the concept of checkmate not appearing until Chapter 5. Just as the teacher would spice his lessons with simple but interesting stories to translate, so the chess coach must invent representative games to give his pupils a chance to compete without playing the full game of chess, and therefore the author makes use of the 'pawn game', which is later modified to include other pieces.

The book contains two volumes, each with twelve lessons. The first volume is for beginners, detailing the moves of the pieces, the rules of the game, notation and simple opening principles, while the second volume gives practical chess lessons for more advanced students. It is recommended that beginners spend a few weeks practising their skills before moving on to the second volume.

Current methods of chess teaching can be somewhat anarchic, and producing strong players is often a very hit-and-miss affair, so it is quite relevant to ask whether a more formal method of training will produce stronger players, or whether it will come up against practical difficulties. At Opening Moves, for example, new players are liable to turn up at any time, making it difficult to timetable a course, and many players

attend irregularly, which would cause them to miss lessons. In addition, most new players already know the moves, but do not understand notation, so that only part of the first volume would be applicable. At a school chess club, on the other hand, it might be possible to organise a course for complete beginners that fits in with the school term, without these problems arising.

I would recommend using Volume One of this book only in a school club, and preferably by a teacher who is sufficiently adept to understand the chess-like games used in the earlier chapters. Volume Two is likely to be of interest to club trainers, whether dealing with children or adults, and I would be interested to hear from anyone who gives a course based on this book. The second volume is also quite suitable for home study, although answers are not given to the review questions at the start of each chapter, so it may be a good idea to share the course with a friend.

Jerry Humphreys

Content ♣♣♣♣, Readability and layout ♣♣, Overall ♣♣♣

**BEST QUALITY
RUSSIAN
CHESS CLOCKS**

1/2-PRICE

Also:

**Top Quality
ROLL-UP BOARDS**
£1.50 each

Paul Cordy
0222 869198

New Year Prize Crossword

No 1 (in a new series) by Zugzwang

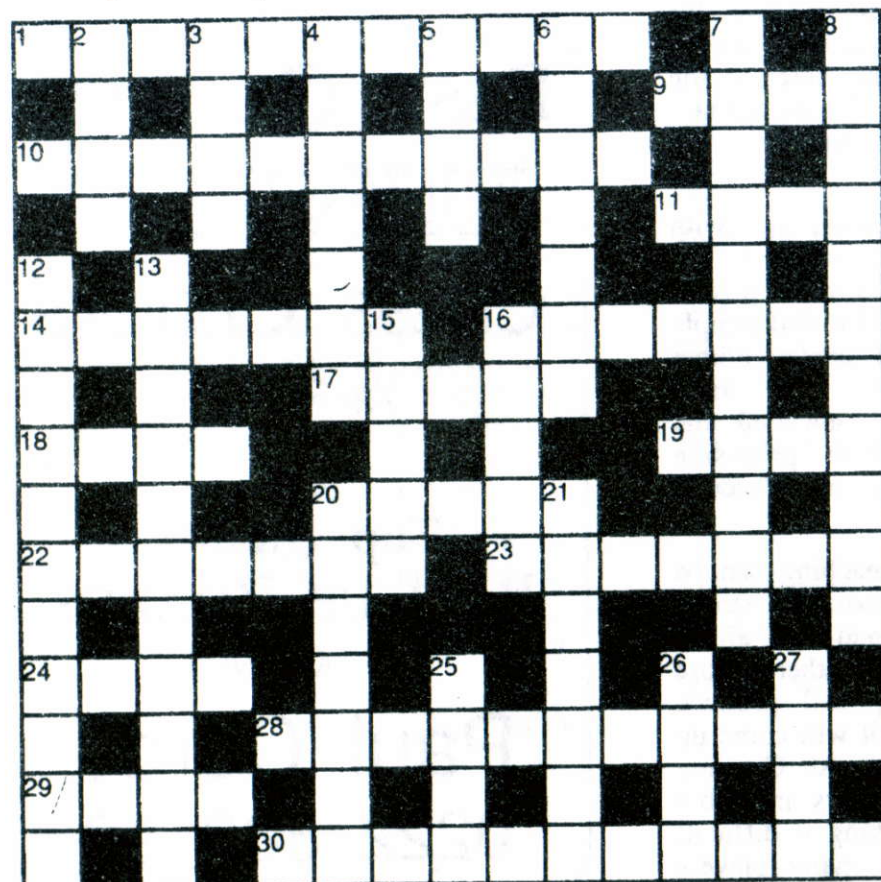
The first correct entry drawn will win a subscription to Bristol Chess Times. Entries must be sent to the Editor by 15th February 1995. State whether you want BCT sent to your home/club. If the winner is already a subscriber, he/she will get an extension of ten issues to the current subscription.

If you want to avoid defacing your copy of BCT, your entry may be on a photocopy, or hand-drawn copy.

Warning: Solvers not familiar with the Bristol League will not understand all the answers.

ACROSS

- 1 I could go about without land boundaries before soft Italian game. (6,5)
 9 C 6er car has wheel. (4)
 10 Mixed pairs juggle big mat - it starts Nh3! (5,6)
 11 A fiery opening made neat. (4)
 14 Go too far after the single. (7)
 16 Dogs' dwelling within broken Nelson's



column. (7)

- 17 Coin a thousand back from heaven? (5)
 18 Study from more advanced book. (4)
 19 Feudal Psychology shows great heights. (4)
 20 Cabot player cooks bread. (5)
 22 They either agree or they're asleep. (7)
 23 Potential student mis-read tenace. (7)
 24 God embracing love is genuine. (4)
 28 Ridiculous procession to briefly read pottery weight. (11)
 29 Bath note pipe. (4)
 30 Free paper? (11)

DOWN

- 2 Scattered rain in the Middle East. (4)
 3 God lives in good inns. (4)
 4 A part in parallel motion - sick colourless orang-utan has 1000. (7)
 5 Theories have origins in some mad superstitions. (4)
 6 The Spike is all at sea in the member's club. (7)
 7 Moves to the Queen's side to fling the French student on a string. (7,4)
 8 Some sly star becomes a little more? (5,6)
 12 A solid opening is sound for nights. (4,7)

13 Use Quickplay finishes to put mad glad bombers out of a job. (6,5)

15 Indicates plenty of semantics arising. (5)

16 Without spectacles, look around, run around kink. (5)

20 Bishop on the rack points to fern. (7)

21 It shrinks in autumn but still starts at dawn. (7)

25 Look around a thousand ducks. (4)

26 Old silver John. (4)

27 Poles surround castle immediately. (4)

Solution in the next issue.

Rules

- 1 Only one entry per person.
 2 Members of the League Management Committee may not enter.
 3 No correspondence will be entered into.
 4 The Editor's decision is final on everything.

Bristol Fantasy Chess

Grumbalds Ash remains top of the Fantasy League, but Blackburne Rovers has cut the lead to just one point at the halfway stage. Many teams closed on the leaders as Grumbalds Ash scored just 98 points in the last two months. Rook Fianchettoes were the highest scorers, with 122 points, and leapt nine places. The Chippendales (120), Simple Minds, Justintimers, Annie's Angels, and Caissa (119 points each) were other teams to score well.

At the other end, Oddballs picked up only 69 points and slumped from 24th to last place.

Team managers will soon be receiving transfer forms to permit them to change up to two of their players.

Team	Manager	Pts
Grumbalds Ash	M Wood	237
Blackburne Rovers	J Richards	236
Chessasy	M Dear	232
Simple Minds	M Brigden	226
The Hatchet Men	C Axon	226
The Chippendales	P Butterworth	221
Swindler's List	R Phillips	215
Wessex	H J Draisey	213
Class Act	M Brigden	208
Crewsers	B Crewe	206
Arkle	R Gage	197
Northavon Nomads	J G Milton	197
Rook Fianchettoes	A Camilleri	194
Clifton Sec's Stars	P Bissicks	193
The Mysterious Rooks	D Pugh	190
Ronan's Six	G Thomson	187
Justintimers	I Pickup	184
Morphy's Marauders	M Furnevall	180
Babylon 6	J Edwards	180
Annie's Angels	N Palmer	179
Anonymous	J Humphreys	177
C J Strollers	C Jones	176
Dead Moon	SS Sandhu	176
The Bishop Bashers	G Mobbs	175
C8 my Hamster	C Beaumont	172
Caissa	R N Allen	172
Friends of Kamsky	J Richards	171
Bigheads	I Biddick	164
64 of Them	J Levine	148
Oddballs	J Paines	136

Team	Pld	Player	Grd	Pts
Clifton A	8	Boyce	163	22
		Collier	180	26
		Cooper	192	31
		Harris	164	21
		Haydon	199	0
Clifton B	8	O'Byrne	143	25
		Baker	165	25
		Furmston	165	14
		Grossett	131	34
		Jones C	180	15
Horfield A	8	Pearce	165E	8
		Tiplady	175E	5
		Davies	166	27
		Dilleigh	182	37
		Easton	187	21
Down'nd A	8	Nendick	166	29
		Richards	154	51
		Sellars	171	37
		Binks	206	30
		Brigden	176	33
Grendel A	8	Humphreys	179	35
		Mordue	204	21
		Oldfield	165E	22
		White	158	31
		Carter	154	37
Hanham A	8	Clarke	166	23
		Osborne	170	62
		Phillips	199	46
		Pugh	174	44
		Will	174	36
S B'tol A	8	Beaumont	212	31
		Biddick	136	14
		Bradley	164	8
		Crockert	161	20
		Palmer	135	19
Univ A	8	Summerill	134	43
		Brooks	157	8
		Jones D	150	28
		Lock	162	22
		Rudd	192	28
Bath	8	Stone	153	7
		Weeks	164	35
		Ansell	205	28
		Simpson	190	34
		Hong	172	23
		Hunt	174	20
		Appleton	171	29
		Buckley	214	33
		Eyley	188	40
		Gregory A	119	30
		Gregory R	147	26
		Helbig	193	5
		Ledbury	141	7
		O'Mahoney	159	1

Results

All results received by the Match Secretary up to 21st December are included.

A = adjudication; C = continuation.

KO Round 2: Thornbury 5½ Downend 2½; Grendel 8 Sun Life 0; Bath 3 Clifton 4 (1C); Keynsham 3 South Bristol 5; University 6½ Sea Mills 1½; Harambee *lost to* Cossham; Civil Service 4 Bristol Cabot 4 (Civil Service win on board count).

Division 1: Horfield A 2½ Hanham A 3½; Downend A 2½ Grendel A 3½; Clifton A 4½ Bath 1½; University A 2½ Horfield A 3½; South Bristol A 1½ Clifton A 4½; Bath 3½ University A 2½; Clifton B 2 Horfield A 3 (1C); Horfield A 3 South Bristol A 2 (1C); University A 2½ Clifton B 3½; South Bristol A 4½ Hanham A 1½; Clifton A 2½ Downend A 3½; University A 3½ Grendel A 2½; Horfield A 4 Clifton A 2; South Bristol A 3½ University A 1½ (1C); Clifton B 3½ Hanham A 2½; Downend A 3 Horfield A 3; Bath 4 Clifton B 2; Clifton A ½ University A 5½; Downend A 3½ Clifton B 2½; Hanham A 3 University A 2 (1C); Horfield A 3½ Grendel A 2½; South Bristol A 3½ Bath 1½ (1C); University A 2½ Downend A 1½ (2C); Downend A 3 South Bristol A 2 (1C); Hanham A 3½ Clifton A 1½ (1C); Bath 1½ Horfield A ½ (4C); Clifton B 1 Grendel A 4 (1C).

Division 2: Nailsea A 1½ Cossham A 4½; South Bristol B 3½ Horfield B 2½; Thornbury A 3½ Nailsea A 2½; Grendel B 2½ South Bristol B 3½; Clevedon A 3½ Grendel B 2½; Thornbury A v Cossham B *postponed*; Nailsea A 2½ Horfield B 3½; University B 4 Sun Life A 2; Cossham B 2½ South Bristol B 3½; Clevedon A 3 Cossham A 3; Thornbury A 3 Sun Life A 3; University B 5 South Bristol B 1; Grendel B 3 Horfield B 3; Cossham B 3½ Nailsea A 2½; Cossham A 2 Grendel B 4; Clevedon A 4 University B 2; Nailsea A 2 Clevedon A 4; Grendel B 4 Sun Life A 2; Horfield B 3½ University B 2½; South Bristol B 1½ Cossham A 4½; Horfield B 1 Thornbury A 4 (1A); Nailsea A 4½ South Bristol B 1½; University B 4½ Cossham B ½ (1A); Horfield B 2½ Clevedon A 2½ (1A); Cossham A 3 Thornbury A 3; Thornbury A 2½ University B 2½ (1A); Grendel B 2 Nailsea A 4; Sun Life A 1 South Bristol B 5; Cossham B 3 Horfield B 2 (1A); University B 3 Grendel B 2 (1A); Clevedon A 3 Thornbury A 3.

Division 3: Keynsham A 4½ Clifton C 1½; Hanham B 3½ Clevedon B 2½; University C 3½ Cossham C 2½; Keynsham A 4½ Nailsea B 1½; Grendel C v Cossham C *postponed*; Nailsea B 3½ Hanham B 2½; University C 1 Downend B 5; Thornbury B 2 Keynsham A 4; Clifton C 5½ Clevedon B ½; Grendel C 1½ Downend B 4½; Nailsea B 2½ Clifton C 3½; Hanham B 3 University C 3; Keynsham A 6 University C 0; Clifton C ½ Thornbury B 5½; Cossham C 3 Nailsea B 3; Clevedon B 1 Downend B 5; Hanham B 2½ Grendel C 2½ (1A); Cossham C 4 Clifton C 2; Downend B 4 Nailsea B 1 (1A); University C 2½ Grendel C 2½ (+1 qp dispute); Thornbury B 3 Clevedon B 3; Grendel C 4½ Nailsea B ½ (1A); Hanham B 3 Cossham C 3; Thornbury B 3 Downend B 3; Clevedon B 1 Keynsham A 5; University C 1 Thornbury B 5.

Division 4: Harambee A 3 Bristol Cabot A 3; Clifton D 4½ Harambee A 1½; Clifton D 4 Horfield C 2; Bristol Cabot A 2 Hanham C 4; Downend C 3½ Bristol Cabot A 2½; Horfield C 5 Nailsea C 1; South Bristol C 2 Keynsham B 4; Clifton D 6 Thornbury C 0; Hanham C 3 Thornbury C 3; Harambee A 5 South Bristol C 1; Downend C 3½ South Bristol C 2½; Horfield C 4½ Harambee A 1½; Keynsham B 5½ Bristol Cabot A ½; Thornbury C 2½ Nailsea C 3½; Clifton D 5½ Hanham C ½; Nailsea C 4 Keynsham B 2; Hanham C 3 Downend C 3; Thornbury C 4 Harambee A 2; Bristol Cabot A 1½ Horfield C 4½; Nailsea C ½ Downend C 5½; South Bristol C 1½ Clifton D 4½; Hanham C ½ Harambee A 5½; Keynsham B 3 Horfield C 2 (1A); Clifton D 5 Nailsea C 1; Bristol Cabot A 1½ Thornbury C 4½; Downend C 4 Clifton D 2; Horfield C 4½ South Bristol C 1½; Horfield C 3 Downend C 3; South Bristol C 3 Hanham C 3; Thornbury C 1 Keynsham B 5.

Division 5: Sun Life B 3½ Bristol Cabot B 2½; University E 3½ University D 2½; Bristol Cabot B 3½ Sea Mills 2½; Nailsea D 4 Clevedon C 2; Sun Life B 2½ University E 3½; Civil Service 3 University D 3; Grendel E 1½ Nailsea D 4½; Bristol Cabot B 4 University E 2; Sun Life B 1½ Grendel D 4½; Civil Service 3 Horfield D 3; Clevedon C 4½ University D 1½; Grendel E 4 Sun Life B 2; University D ½ Horfield D 5½; Grendel D 3½ Clevedon C 1½ (1A); University E 4 Sea Mills 2; Bristol Cabot B 2 Civil Service 4; University D 2½ Bristol Cabot B 3½; University E 2½ Grendel D 2½ (1A); Sun Life B 2½ Nailsea D 3½; Civil Service ½ Sea Mills 5½;

University D 4½ Grendel E 1½; Horfield D 5 Nailsea D 1; University E 2½ Clevedon C 3½; Nailsea D 4 University E 2; University D 3 Sun Life B 3; Clevedon C 2 Horfield D 4; Grendel E 4 Bristol Cabot B 2; University D 1½ Nailsea D 4½; University E 4½ Civil Service 1½; Sea Mills 3 Horfield D 3; Grendel E 3½ University E 2½; Grendel D 4 University D 2; Sea Mills 4 Clevedon C 2; Sun Life B 2 Civil Service 4.

Division 6: Yate B 4½ GE 1½; Grendel F 3½ GE 2½; Yate A 5½ Hanham D ½; GE 2½ Yate A 3½; Downend E 1 Hanham D 5; Yate B 2 Downend D 4; GE 0 Keynsham C 6; Clifton E 3 Grendel G 3; Harambee B 1½ Yate A 4½; Nailsea E 1 Grendel F 5; Downend D 3 Harambee B 3; Yate A 5½ Grendel G ½; GE 1 Downend E 5; Keynsham C 4 Clifton E 2; Nailsea E 1 Keynsham C 5; Grendel F 5½ Clifton E ½; Harambee B 5 Grendel G 1; Downend D 4 Yate A 2; Hanham D 2½ Grendel F 3½; Yate B 0 Clifton E 6;

Harambee B 5 Downend E 1; Downend D 1½ GE 4½; Grendel F 5 Grendel G 1; Hanham D ½ Keynsham C 5½; Yate B 6 Harambee B 0 (w.o.); Clifton E 6 Nailsea E 0; Grendel G 1 Downend D 5; Grendel F 4½ Downend E 1½; Yate A 3½ Keynsham C 2½; Harambee B 5½ Nailsea E ½; Downend E 3 Nailsea E 3; Grendel F v Yate A *postponed*; GE *lost to* Grendel G; Keynsham C 3 Yate B 3; Clifton E 1½ Hanham D 4½; Grendel G 3½ Hanham D 2½; Downend E 3½ Yate B 2½; Keynsham C 4 Downend D 2; Clifton E 2 Yate A 4; Harambee B 4½ GE 1½.

Don't forget...
Bristol & District
League Congress
3-5 February

League Tables

includes resolved matches up to 21st December.

Division 1			Division 2			Division 3		
	Pld	DP Pts		Pld	DP Pts		Pld	DP Pts
Grendel A	8	- 12	Clevedon A	7	- 12	Downend B	9	- 17
South Bristol A	6	- 8	Grendel B	7	1 9	Keynsham A	9	- 14
Horfield A	5	- 7	Horfield B	6	- 8	Thornbury B	9	- 11
Downend A	6	- 7	Cossham A	7	- 8	Clifton C	9	2 10
Bath	6	- 6	Thornbury A	6	- 7	Grendel C	6	- 8
Clifton B	7	1 5	University B	6	1 6	Nailsea B	9	4 7
Hanham A	6	6 4	Cossham B	6	- 4	Cossham C	8	- 5
University A	6	6 4	Sun Life A	7	- 3	Hanham B	8	4 5
Clifton A	8	12 4	Nailsea A	8	- 3	University C	8	4 4
Horfield B withdrew.			South Bristol B withdrew.			Clevedon B	9	6 3
Division 4			Division 5			Division 6		
	Pld	DP Pts		Pld	DP Pts		Pld	DP Pts
Keynsham B	8	- 14	Grendel D	8	1 14	Keynsham C	11	- 19
Clifton D	9	1 14	Horfield D	10	4 14	Downend D	11	- 17
Horfield C	8	- 13	Sea Mills & LW	10	- 14	Yate & S A	9	- 15
Downend C	9	1 12	Nailsea D	10	5 13	Grendel F	10	4 15
Hanham C	9	1 7	University E	9	7 10	Harambee B	11	22 12
Harambee A	9	2 7	Civil Service	10	- 10	Downend E	11	- 10
Thornbury C	9	3 7	Clevedon C	10	2 9	Yate & S B	10	- 8
Nailsea C	7	3 4	Bristol Cabot B	9	6 8	Hanham D	10	2 7
Bristol Cabot A	8	2 3	University D	10	3 4	Grendel G	10	6 7
South Bristol C	8	- 3	Sun Life B	10	5 4	Clifton E	11	10 6
			Grendel E	10	28 4	GE	8	3 2
						Nailsea E	10	9 1

DP = Default Penalty Points. One league point has been deducted for every ten DPs.

League Notices

South B's call it a day

South Bristol B has withdrawn from Division 2 following extended problems in raising a full team. Their entire record for the season has been deleted (rule 6.7a); the league tables have been updated to show this. Games played against South Bristol B in the first half of the season will still count for grading.

The South's B's are the second side to go under this season; Horfield withdrew its B side from Division 1 at the start because of a shortage of players.

Five for Division 7

While some teams disappear, others spring up. Five teams have been entered for the mini seventh division to start in the new year. They are Downend F, Keynsham D and E, Nailsea F, and Yate C. Chris Carter says he is prepared to accept one late entry up to the end of January.

Bristol Grand Prix

The League's General Committee has asked Chris Carter to investigate the possibility of forming a Bristol Chess Grand Prix. An open meeting will be held at the Full Moon (Grendel's venue) at 7:30 pm on Monday 16th January to discuss the feasibility of the idea.

Anyone who is interested in this project, and has anything to contribute to the discussion, is welcome to attend. However, interested organisations are asked to try and limit their representation to a couple of people each.

The Grand Prix will work by awarding points to players according to how they score in a set of tournaments. The aims are to increase entries, publicity and interest in local tournaments, and to encourage more local events.

A discussion document giving full details is available from Chris Carter (0117 924 5443, between 6 and 7pm, weekdays).

A reproduction of *Bristol Chess Times No 1* can be yours.

A limited number of copies of the first issue (on A4 instead of foolscap) are available.

Send £2 (includes postage & packing) to:

Bristol Chess Times, 7 Maycliffe Park, Bristol, BS6 5JH.

Make cheques payable to the 'Bristol & District Chess League'. Allow 21 days for delivery.

Diary

Use this column to advertise your events. It's free, but please send your entries in plenty of time to the Editor.

Jan 14-15. TORQUAY. Spectrum Chess, U-180, U-140, U-104. L Day 01803 212136.

Jan 21. Golders Green Open Rapidplay. Adam Raoof 0181 202 0982.

Jan 21-22. 4NCL, BRIDGEND. Roy Phillips 0117 926 6555.

Jan 28. Glos v Wilts, Somerset v Devon.

Feb 3-5. BRISTOL League Congress, Students' Union, Queen's Road.

Feb 11. WECU Junior Jamboree, Ladymead School, Taunton.

Feb 12. TIVERTON Rapidplay. J Frost, 01884 253844.

Feb 17-19. PORTSMOUTH Congress. P McEvoy, 01705 388341.

Feb 18-19. 4NCL.

Feb 25-26. SWINDON: Wiltshire & West of England Junior Open. Mrs M Debbage, 01793 617619.

Mar 4. BRISTOL League Quickplay, Students' Union, Queen's Road.

Mar 11. Somerset v Dorset.

Mar 12. TEIGNMOUTH Rapidplay. J G Gorodi, 01626 55360.

Mar 18-19. 4NCL.

Mar 24-26. EAST DEVON Congress. E G Sparke, 01395 442585.