

No: 89, September 1992

Bristol CHESS TIMES

The Magazine of the Bristol & District Chess League

75p



"I don't care what FIDE says - I refuse to use Algebraic!"

Bristol CHESS TIMES

Editor: John Richards
7 Maycliffe Park, Bristol,
BS6 5JH. Tel: 0272 551912

Subscriptions: £6.00 for ten issues (posted to a home address) or £4.00 for ten issues (collected from a Bristol League club). Send cheques payable to the Bristol & District Chess League to the Editor.

Printed by: Everest, 195 Cheltenham Road, Bristol BS6 5QX. Tel: 0272 246248.

Advertising: rates are available on request from the Editor.

Bristol Chess Times is the official magazine of the Bristol & District Chess League, but the opinions of the contributors do not necessarily reflect those of the Management Committee.

Games listings and diagrams are created using ChessBase.

No parts of this magazine may be reproduced without the prior express permission of the League. All rights reserved. © 1992.

CONTENTS

- 2 Editorial
- 3 Around the Clubs
- 3 League Tables
- 4 The League 1991-2
- 4 League keeps 6 divisions
- 5 AGM close to adopting Quickplays
- 6 Cotswold Congress
- 6 Yet Another Stitch-Up!
- 7 Cup Draws
- 8 BCF proposes grading fee
- 9 Bristol League Congress
- 10 Hannover Exchange Visit
- 10 Junior Chess
- 11 St Paul's Quickplay
- 11 Summer Lightning
- 12 Find the Moves
- 13 Third Frome Congress
- 14 My 7 Memorable Games
- 16 Diary

Editorial

Welcome to the New BCT

I hope you like the new format and enjoy reading this issue. Please continue to send me your articles (you don't have to be an expert player to write an article), letters, and bits of news.

Supporting the BCF

For years, the majority of Bristol League players have contributed nothing to the British Chess Federation because, unlike other leagues, we have not insisted that our players register. But all could be about to change because 1992-3 could be the last season that games in the Bristol League are graded. That's what will happen if we choose not to enter the BCF's new Player Registration Scheme (see page 8) at our AGM next May.

I am personally in favour of the new scheme; I believe we need a national organization to support our top players, coach the promising juniors and provide national competitions. The amount of money that the BCF want from the average player (who plays about a dozen graded games a year) is very small, £2-£3, the equivalent of (tired old cliché) a couple of pints. But, let me know what you think.

A bitter sweet comeback

As we go to press, it looks like Bobby Fischer may finally emerge from his self-imposed 20-year exile to play the world no. 101, Boris Spassky, in Serbia. The anticipation of seeing Fischer play again is marred by knowing that this is just a cynical attempt by Serbia to bust the UN sanctions against that dubious regime. If the match starts (and that's a big if!), then enjoy the games, but remember the concentration camps.

Subscriptions

We no longer have any cheap printing facilities, and the current subscription rate does not cover the cost of printing, let alone postage. Selling advertising will help a bit, but in order to ensure the long-term viability of the magazine, the subscriptions will have to go up on 15th October. Existing subscribers can save money by resubscribing early - see the back page.

Richard Palmer

Lastly, I would like to say a big thank you to the previous editor, Richard Palmer. Richard did a marvellous job in turning the BCT from a newsletter into a magazine and produced over forty issues over several years of hard work.

John Richards

Around the Clubs

This is a new regular column, containing club news. Write to the Bristol Chess Times about what is happening in your club, and we'll publicise it here.

BRISTOL CENTRAL has had to close following a number of members leaving the area and a massive increase in rent. Most of the remaining members have moved en bloc to play at COSSHAM, who now have two teams in the league. Cossham A has replaced the old Central A in Division 2.

While on the subject of team changes, SEA MILLS have withdrawn two teams for the 1992-3 season and are left with just two. HARAMBEE, NAILSEA, and THORNBURY have all added one team each.

DOWNEND held a straw poll at their AGM in June about quickplay finishes in the League. Ten people wanted them and 8 did not. They voted by 10-7 that quickplay finishes were preferable to adjudications. Asked if they would like to play adjournments, 4 said yes and 13 were against.

The popular HANHAM Congress looks like going ahead despite losing use of the Hanham Folk Centre. Negotiations over a new venue are well underway and a date in late January is planned. More next issue.

Transfer news exclusive!: Bristol Champion Chris Beaumont has left CLIFTON to play for first division newcomers HANHAM.

HORFIELD celebrate their 50th birthday this season. They have also changed their full name from Horfield & Montpelier to Horfield & Redland.

Final League Tables 1991-92

Division 1			Division 2			Division 3		
	Pld	DP Pts		Pld	DP Pts		Pld	DP Pts
Clifton A	18	5 29	Horfield B	18	- 26	University B	16	2 29
Horfield A	18	- 28	Hanham A	18	5 26	Keynsham A	16	8 21
Downend A	18	- 25	Clevedon A	18	- 24	Horfield C	16	1 16
Bath	18	- 21	Downend B	18	- 21	Cossham	16	- 16
Clifton B	18	- 19	Sun Life A	18	- 20	Grendel B	16	8 14
University A	18	7 17	Nailsea A	18	- 18	Nailsea B	16	4 13
Sea Mills A	18	1 14	Thornbury A	18	- 17	Downend C	16	- 13
S Bristol A	18	6 14	Central A	18	4 16	Clevedon B	16	- 12
Grendel A	18	1 10	Clifton D	18	17 8	Central B	16	7 10
Clifton C	18	30 0	S Bristol B	18	6 3	Winterbourne withdrew		
Division 4			Division 5			Division 6		
	Pld	DP Pts		Pld	DP Pts		Pld	DP Pts
Sea Mills B	18	21 29	Cabot	14	1 19	Sea Mills D	18	3 29
Omnibus A	18	1 23	Nailsea C	14	- 19	University D	18	1 27
Keynsham B	18	4 23	Harambee	14	1 17	Clifton E	18	4 20
Grendel C	18	4 20	Hanham C	14	1 17	Grendel D	18	12 16
Hanham B	18	1 20	Sun Life B	14	- 15	Hanham D	18	1 16
University C	18	16 19	Sea Mills G	14	7 9	Omnibus B	18	9 11
Thornbury B	18	- 14	Clevedon C	14	9 9	Downend E	18	13 5
Horfield D	18	- 11	Downend D	14	8 7	All-Play-All 3 times		
S Bristol C	18	2 11	Keynsham C withdrew					
Civil Service	18	3 7						

DP = Default Penalty Points. One league point has been deducted for every ten DPs.

The League 1991-2

Division One

Clifton A did the league and cup double, but in a less convincing manner than previous years. Horfield A pushed Clifton A to the line, ending up just a point short, and winning one of the two matches against Clifton A by 5-1. Horfield also reached the final, where Clifton won by 6-1. Grendel drop out of Division One for the first time since their formation in 1976. They are joined by Clifton C, who did not have a happy time.

Division Two

Horfield B just took Division Two from Hanham B on tie-break. Both are excellent teams, but will find survival their first concern in a tough first division. Clifton D and South Bristol B slid into Division Three a long way adrift from everyone else.

Division Three

Division Three was a runaway success for University B (repeating the achievement of their A team who won it the year before). Keynsham A were clear second. It was tight at the bottom - the third team, Horfield C, got just 50%. In the end, Central B and Clevedon B filled the bottom two places.

Division Four

Sea Mills B were undisputed winners of Division Four, dropping points only when the title was assured. Keynsham B and Omnibus A had a battle for the other promotion place, with the latter succeeding on tie-break.

Division Five

Division Five saw a tight and exciting finish; five teams being in with a chance of promotion. Cabot snatched the title on tie-break from Nailsea C. Harambee and Hanham C had to settle for third and fourth respectively. This was a small division with nine teams to start with, and it became even smaller when Keynsham C withdrew, leaving each team to play just fourteen matches. Downend D and Clevedon C (on tie-break from Sea Mills C) took the relegation spots.

Division Six

The bottom division was clear-cut. Sea Mills D were division champions by two points from University D, with the rest nowhere.

All relegation and promotion places are provisional until the League Management Committee decides on the composition of the divisions for next season.

League stays at six divisions

THE LEAGUE MANAGEMENT COMMITTEE decided on the composition of the divisions for the 1992-3 season at its July meeting. Fifty four teams had entered; the same number as finished the season, but two less than at the same time last year. The LMC voted to keep the top four divisions at ten teams each and have fifth and sixth divisions of seven teams each (playing each other three times to give 18 matches).

Division 1: Clifton A and B, Horfield A and B, Downend A, Bath, University A, Sea Mills A, South Bristol A, Hanham A.

Division 2: Grendel A, Clifton C, Clevedon A, Sun Life A, Downend B, Nailsea A, Thornbury A, Cossham A, University B, Keynsham A.

Division 3: Clifton D, South Bristol B, Horfield C, Cossham B, Grendel B, Nailsea B, Downend C, Clevedon B, Sea Mills B, Omnibus A.

Division 4: Keynsham B, Grendel C, Hanham B, University C, Thornbury B, Horfield D, South Bristol C, Cabot, Nailsea C, Harambee A.

Division 5: Civil Service, Hanham C, Sun Life B, Clevedon C, Downend D, University D, Clifton E.

Division 6: Grendel D, Hanham D, Omnibus B, Downend E, Harambee B, Nailsea D, Thornbury C.

AGM close to adopting quickplays

John Richards

QUICKPLAY FINISHES came extremely near to being adopted for a trial season at the League AGM in May. Just one more vote was needed to get the necessary two-thirds majority, and two recounts were held before the motion was declared lost. However, there has been a big increase in support for the quickplay finish idea, and many people think it likely that adjudications will disappear within the next one or two seasons.

Devon Thomas (Harambee) proposed the motion to introduce quickplay finishes in all divisions, except for Division One. He wished to see games played to a finish, without the artificiality of adjudication. He suggested this would improve endgame play, and it would stop the type of situation where one player won a pawn and then sat on the advantage until adjudication time. One of the big advantages would be that a match result was obtained on the night, instead of some weeks later.

Steve Boniface (Grendel) opposed the motion. He spoke from personal experience as a tournament controller that quickplay finishes would lead to a number of disputes during a season. The lack of an independent arbiter at league matches would cause difficulties.

Devon accepted an amendment from the floor to introduce the new scheme for a trial period of a year. A shrewd move, as it boosted the number of people prepared to support the motion. The first vote was 24-12, sufficient to pass the motion with a two-thirds majority, but on recounts the number changed slightly (to 25-13) and the motion just failed. Chris Carter pointed out that a similar motion last year had managed to attract just 50% of the vote, so support was undoubtedly increasing. Steve Boniface said he believed that a similar

motion next year, with well-thought out rules, would be passed.

Earlier, the League Management Committee had come under fire for its plans to reform the committee structure. A motion to split the Secretary's workload into two - a Match Secretary and a General Secretary - was unopposed. But the second motion, to reduce the size of the committee to six main officers, met strong opposition from some people. The LMC's reason for proposing the motion was that a number of things had been wrong with the organization the previous season, and they were looking to make the LMC more efficient. Some speakers suggested that the LMC would become less democratic, and too much power would be concentrated in too few hands. The motion was passed, after a vociferous debate and two recounts, by just getting the required two thirds majority.

In another motion, the team registration fees were raised from £12.50 to £14.00 per team.

All the league officers were elected unopposed, though there were a number of changes. Alan Williams moved from Treasurer to the new General Secretary post and Adam Stirling came in as Treasurer. Richard Palmer retired as ChessTimes Editor and became WECU Council Delegate. John Richards took over as ChessTimes Editor and Mike Hale picked up Recruitment and Alan Ashby's old Publicity post. Ray Studer took on the difficult Grading officer job from Ian Biddick.

The posts in full:

LMC posts:

President: Terry Marke. Chairman: Mike Wood. General Secretary: Alan Williams. Match Secretary: Chris Carter. Treasurer: Adam Stirling. ChessTimes Editor: John Richards

Other Officers:

Vice-President: Mike Brigden; Publicity and

Recruitment: Mike Hale; Adjudications Secretary: Andrew Borkowski; Grading Officer: Ray Studer; WECU Council Delegate: Richard Palmer; Auditor: Richard Smith; Tournament Organiser: J James.

There were only about 40 people at the AGM; nine down on last year. This was disappointing. AGMs do go on a bit (this one lasted till 11:20) but they are important because they decide on how the League is going to be run. Next year's AGM will be especially important as it will discuss the BCF's Player Registration Scheme, which will affect chess players in the area they notice most - their pockets!

House wins Cotswold Premier

Cotswold Congress: May 23-25, Gloucester.

Open: 1= C Cobb (Swindon), J Naylor (Rugby) 5; 3= I Dutton (Shipston), S Finn (Slough), K Norman (Wokingham), S Small (Malvern) 4.5. Grading prize: S James (Worcester) 4. 40 competitors.

Premier (160 & below): 1 **K House** (Bristol) 5; 2= **D Eggington** (Nailsea), C Evans (Rhondda), E Sandercock (Chalfont) 4.5. Grading prize: R Comley (Cheltenham), P Faulkner (Nottingham) 3. 40 competitors.

Major (130 & below): 1 A Matthews (Leighton Buzzard) 5.5; 2 J Potter (Folkestone) 5. Grading: I Blencowe (Gloucester) 4.5. 49 competitors.

Minor (100 & below): 1 S Morgan (Leominster) 5.5; 2= A **Palmer** (Nailsea), A Prole (Nottingham) 5. 33 competitors.

Clifton and Nailsea win the cups

BRISTOL KO CUP FINAL: Horfield 1 Clifton 6.

BRISTOL MINOR CLUBS KO CUP FINAL (The Praxis Trophy): Nailsea 6½ Keynsham 1½.

Yet Another Stitch-Up!

A jaundiced view of the League's 1992 AGM

Richard T. Biskit

EVEN BEFORE the meeting started, the theme of the evening was clear. Without consultation, it had been moved, from the bar to the theatre. What symbolism! The no-nonsense, know-where-you-stand atmosphere of the working class cathedral was out - and in came the sterile, pretentious symbol of the middle-class artsie-fartsies.

As defenders of truth and freedom we knew we were facing an uphill fight against the relentless destruction of civil liberties by the establishment. The old amongst us remembered the good old days of AGMs at the 'Bus, and realised grimly that without the props of endless cheap beer, fags and breakable furniture, there was little chance of a serious riot.

The Confederated Institution of Chessbosses opened proceedings with the oldest trick in the book. An endless procession of men in grey suits got up, wrung their hands with sorrow at the bad times through which they had put us over the last year, and promised to do better. But (ah haa!) they could only do better if we did exactly what they told us to!

The politically more aware amongst us could see through their ploy immediately - a perfectly innocuous motion tinkering with the administration, followed by one that concealed the most monstrous grab of power by the State since the last one. Brother Boniface was the first onto this, denouncing the move as a conspiracy to concentrate massive power into the hands of a few ruthless barons who were intent on stifling the freedom of all chessplayers. Brother Collier stood by him, gloomily predicting the end of democracy for at least a year.

But it was left to Brother Hughes, Shop Steward of the Consolidated Union of Bristol League Graders, to mount the bravest challenge. He condemned the glib broadsheet put out by the Chessbosses before the meeting as 'bullshit' (what else do you expect from a marketing man, Brother?) and showed great solidarity when he demanded that a worker representative from his Union be put back on the Board.

Why the Graders were not backed up by the other unions at this point is a matter of grave concern, and one that the Provisional Committee will be looking at very hard. This was particularly unforgivable after wch-Tory thug Chairman Wood had abused the Graders Union by suggesting that the low turnout at Committee meetings was caused by endless, boring discussions on grading.

This weakness from the Workers allowed the Bosses to push through their authoritarian measures, albeit with the help of some blatant vote rigging in which every vote for their motions was counted three times. Conspiracy theorists amongst us were proved horribly right soon after. A parade of tired has-beens - Carter, Hale, Palmer, Richards and Williams - had all earlier been set up as scapegoats and had apparently

resigned. But no more than an hour later, they were all back in office, (or rather, each other's offices, having done a cynical swap), wielding the brutal new powers granted them not minutes before.

Worse was to come. Brother Thomas had volunteered to step forward and demand the end of that most sinister of establishment organisations, the Adjudications

panel. Unfortunately, Brother Thomas is a real pinko, using wishy-washy liberal concepts like 'it isn't fair'. Not surprisingly, he was butchered by the Bosses. First they created maximum confusion by suggesting that the rule change might change the

assessment of the King, Bishop and Knight versus King ending. Then they rigged the ballot again, this time counting the votes against three times over.

A tragic if predictable stitch-up. Still, the evening was not entirely without its moments. Those Page Three lovelies Mills and Millbank tripped across the stage lightly adorned to set a few hearts abearing, although it was generally felt that Millbank's knees were showing the characteristic signs of a life spent in bad positions.

Grendel get toughest tie

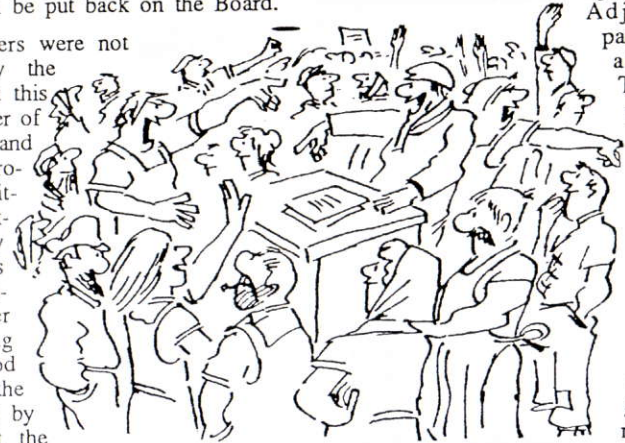
IN THE DRAW for the Bristol KO Cup, holders Clifton have drawn second division Grendel.

Round 1: Clevedon v University; Downend v Harambee.

Round 2: Clevedon or University v Sea Mills; Nailsea v South Bristol; Hanham v

Thornbury; Grendel v Clifton; Civil Service v Horfield; Sun Life v Downend or Harambee; Cossham v Keynsham; Omnibus v Bath.

The Minor Club KO, Round 1: Thornbury v Civil Service; Harambee v Omnibus; Nailsea v Cossham; Keynsham v Sun Life.



BCF plans charge for grading

John Richards

In May 1993, the British Chess Federation will launch the Player Registration Scheme. The PRS is likely to have a huge effect on chess organisation in this country, because it will radically alter the way the BCF gets its income. In Bristol the effects are especially likely to be noticed.

To understand what the PRS is and why this has come about, we need to look at how the BCF currently gets its income and why the system is breaking down. The BCF has two levels of membership: direct members and registered players. The direct membership scheme is fairly new; more players are aware of the registration system.

Direct membership costs about £25 per year, and includes a number of benefits, such as a free newsletter, a free yearbook, and reductions on congress entry fees. However, less than a thousand people have been attracted by the direct membership scheme and a lot of the income has to be spent on providing the membership incentives.

Registration is a lot cheaper. For £4.40 per year, a player is entitled to play in BCF events. The registration money goes to the counties, which then have to pay most of it to the BCF. This has become increasingly difficult for the counties because the BCF now charges them, not according to how many players register, but how many players are on the grading list. As it is not necessary to register to be on the grading list, the counties have to stump up for all those players who do not pay anything. In some regions this is not a problem; for example, East Anglian counties are happy with the present arrangements, but that is because they have a high percentage of registered players - you have to be registered if you want to play. However, in most regions it is a different story, and the

West of England is one that is badly affected. The main problems occur where the counties have no control over local leagues.

Gloucestershire and Somerset both have to pay for players in the Bristol League. The majority are assigned to Gloucestershire and the rest to Somerset. But only a minority of players (primarily those in the top divisions) register with the BCF. The Bristol League has never enforced BCF registration on its players - something that is not true of other major leagues, such as London, Birmingham and Manchester - and this is one reason why Gloucestershire and Somerset are finding it very difficult to raise the money to pay their levies to the BCF. Gloucestershire found itself suspended for a short time a few months back when it was unable to meet its bills.



The BCF realised that the current system is likely to collapse. It set up a working party to investigate alternative methods of funding, and subsequently adopted its recommendations for the Player Registration Scheme. The working party reported the present system was seen as unfair, and it proposed a "fairer" system based on payment for services. The most visible service, and one that affects nearly every player, is grading.

Under the proposed scheme, there will be a charge of about 20p per player for every game that is to be graded. This will affect

all competitions. If no payment is made to the BCF, then no grading will be done. For a congress, this will be fairly easy to administer; the congress organisers will add an amount to the entry fee, £1 for a five round event. Note that individuals will not be able to opt out of the system. If an event is to be graded, then all the games in that event must be graded. It will not be possible to have the scenario where one player pays for a game to be graded, and the opponent does not pay; both must pay. The BCF have now decided to adopt the scheme and will phase it in *gradually*, starting from May 1993.

What does all this mean for the average Bristol and District League player? Well, the first thing is that the next League AGM in May will have to decide whether to enter the scheme or stay out. If we go in, then the League will have to pay the BCF a sum of money annually which, when the scheme is fully introduced, would be about £1240 at the 20p rate. However, the BCF intend to introduce the PRS gradually, so if they decide to charge a 5p rate in the first year the League would pay about £310. The easiest way to raise this money would be to increase the league team registration fee by £5.75, leaving it to the clubs to decide how to charge their members, by increased subscription or board fee. If we stay out of the scheme then none of the league games will be graded.

This issue is likely to raise strong feelings on both sides. There are those who will object to having to pay money to the BCF, and those who will not want to play ungraded league games. Financially, some people may find themselves better off when the scheme is fully introduced as they will not be paying the BCF registration fee any longer. On average, each registered league player would pay about £2.75, though in some cases it could be about £3.60. In the end, it all comes down to the argument about whether we should have a national federation and what it provides for us.

It's important that the PRS is discussed fully before next year's AGM. If you have views on what the League should do, please write to the Bristol Chess Times.

Hunt mounts strong challenge for Bristol crown

CHRIS BEAUMONT (Clifton) retained his Bristol Champion title at the Bristol League Congress, held from 15-17 May. Beaumont won his last round game to take outright first place in the five round contest.

The performance of the tournament was undoubtedly that of Chris Hunt, also from the Clifton club. The seventeen year old had one of the lowest ratings (152) in the top section but he went into the last round neck-and-neck with Chris Beaumont. In a hard-fought final round game, which was the last to finish, Beaumont managed to squeeze out Hunt in the endgame.

The team prize went to Horfield I on tie-break. A special mention must go to Grendel II, which managed to finish tie first despite having only three team members to everyone else's four.

Section 1: 1= C Beaumont (Clifton) 4.5; 2 J Humphreys (Downend) 4; 3 C Hunt (Clifton) 3.5. Grading prize: C Evans (Bristol Omnibus), P Nendick, A Williams (Horfield) 2.5.

Section 2: 1= R Radford* (South Bristol), D Summerill (Hanham) 4; 3 M Collier (Hanham) 3.5.

Section 3: 1= J Tuson* (Grendel), S C Roberts (Bristol Central) 4; 3= D Francis (Horfield), G Cameron (Sun Life) 3.5.

Section 4: 1 M Shipton (Grendel) 4; 2= M Bridgman (Grendel), J Paines (Sun Life) 3.5.

Team Prize: 1= Horfield I*, Grendel I, Grendel II, Monks Park 11 pts.

(* indicates winner on tie-break). A full report on each section will appear in the next *Bristol Chess Times*.

■ CLEVEDON'S COLIN CHAMBERS played for England in the Ninth Chess Olympiad for the Visually Handicapped, Mallorca, 15-28 April. Colin got an excellent score of 6½ from 9 games. England finished in sixth place, while Russia were first. 32 teams took part.



JUNIOR CHESS

Jerry Humphreys

HOW MANY JUNIOR MEMBERS does your club have? How many of them are under 11? What coaching facilities do you provide for your junior players? How many of your juniors would be capable of playing in Division 1?

As League Junior Officer, it is my job to answer these and many related questions. As a start, I intend to carry out the following activities over the coming season:

- to visit every league club, and find out about its activities regarding juniors;
- to support any league club which seeks to expand its activities by launching a junior recruitment programme;
- to support any league club which wishes to organise lectures or coaching sessions;
- to arrange friendly matches between junior teams from different clubs;

Hannover Exchange Visit gets go-ahead

THE USUAL BIENNIAL sporting visit of Bristol to its twin city of Hannover has been rescued after doubts about its future because of cuts in the Council Leisure Service Exchange Budget. However, prices have had to go up, and it will cost £110 adult and £70 junior. This is for air travel from Bristol with coach links provided. The flight out will be on Friday 2nd October, returning on Monday 5th. Free accommodation is provided by our German hosts.

There are some extra places available (the tennis players dropped out - probably fed up with being beaten) so ring Steve Boniface on 0272 515869 if you fancy a fun weekend playing chess in Hannover.

- to produce a regular junior column in Chess Times.

I hope to be able to visit the majority of clubs in the first half of the coming season. In the meantime, any club secretary who is concerned about the number of juniors at his club, or who wishes to launch a new recruitment campaign in the coming months, is welcome to contact me (Bristol 650097). Similarly, any club which would like a junior match against another club should contact me for details.

Primary Chess

Bristol has a flourishing primary schools league, organised by Chris Williams. It includes a schools league (for Avon County Council schools), county junior matches for Under-9's and Under-11's, and an individual tournament open to all. The latter is held in January and is run over two days, with the first day being a qualifier. There are sections for Under-9, Under-10 and Under-11. Chris is particularly keen that players whose school does not have a team in the league should play in the individual tournament.

Chris Williams can be contacted on 0453 844932 for further information.

Taking to the streets

A SHORT PERIOD OF TORRENTIAL RAIN failed to dampen the spirits of the people who turned out to man the League's stall at the St Paul's Carnival on 4th July. For the first time, the League took to the streets to advertise itself. A stall was erected with three chessboards and passers-by were invited to play. Soon after setting up at 10:30, a crowd of children descended and after that the stall was busy until it was shut down at 5pm. A large number of leaflets advertising the clubs were handed out, and the League's 'stars' were caught out on a couple of occasions by the strength of the opposition.

The League's Recruitment and Publicity Officer, Michael Hale, was delighted. "This has been a really successful day and we have met a number of promising players. We will certainly be back next year."

St Paul's attracts record numbers

THE SECOND ST PAUL'S Carnival Chess Quickplay Tournament was a great success: numbers were dramatically up on the previous St Paul's tournament, 77 turned up compared to 46 on the last occasion. In fact, there were so many late entries that the organisers had to scramble to find extra tables and equipment.

Bath student Graham Buckley dominated the Open section, winning with 6/6, a point ahead of Clifton's Chris Beaumont. British under-14 champion, Harriet Hunt (Oxford) started well and demonstrated she will be a star of the future, but had to withdraw after the fourth round owing to illness. This was a wise precaution as she had to travel to Germany the next day to take part in the World Under-14's (where she came third).



Two Bristol Central players, John Baker and Steve Roberts, entered the last round of the Minor section neck-and-neck and had to play each other. John won, while Steve got the consolation of a grading prize.

The tournament was sponsored by the St Paul's Carnival Committee, and organised by Devon Thomas and Harambee. The controllers were Ian Biddick and John Richards.

OPEN: 1 G Buckley (Bath Univ) 6; 2 C Beaumont (Clifton) 5; 3 S James (St Johns) 4½. Grading prize: J Carr (Whaddon) 3½. 29 entries.

MINOR: 1 J Baker (Bristol Central) 5½; 2 T W Broadway (Hanham); 3 K Dan (Gloucester); 4 N Suttie (all on 5 points). Grading prize: S C Roberts (Bristol Central) 4½. 48 entries.

UNDER-12: 1 R M Churm (Thamesdown Jnr) 4½; 2 L J Debbage (Thamesdown Jnr) 3; 3 M J Brooke-Smith (Clevedon) 2½.

Summer Lightning

Rd 1: Omnibus 24 Thornbury 12; South Bristol 27 Clevedon 9; Nailsea 16 Sea Mills 20; Grendel II 31 Harambee 5.

Rd 2: Keynsham 15½ Sea Mills 20½; Cossham 19 Grendel II 17; Grendel I 27 Omnibus 9; Hanham 20½ South Bristol 15½.

Semi-Finals: Cossham 19 Sea Mills 17; Hanham 10½ Grendel I 25½.

■ THE DEFUNCT WINTERBOURNE CHESS CLUB have decided to sell off their equipment. Very generously, proceeds of the sale will go to the Bristol Chess Educational Trust.

There are 18 good sets with plastic boards for sale at £6 for a set and board, and six clocks in excellent condition at £10 each. The latter are likely to be extremely popular, so any buyer will be limited to two clocks maximum.

Offers should be made to the League Chairman and BCET Trustee, Mike Wood, 14 Bradley Court, Downend, Bristol, BS16 5DA. Tel: (0272) 572342. The goods can be inspected by arrangement at Downend CC on a Tuesday evening.

■ Bristol University student Michael Hennigan, 21, won the Smith and Williamson Young Masters in July. He scored 9/11 against an international field, half a point clear of his nearest rival.

“ Now, as far as I can see, the point is to get from one side of the board to the other and kill the king. What I can't understand is why it ought to take so long to do it.

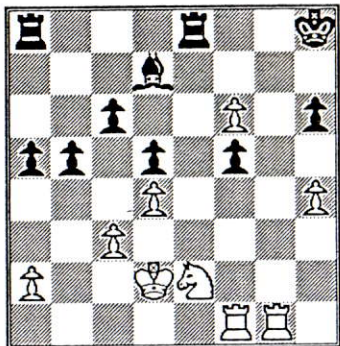
“Look at this piece, the rook. Moves sideways. American people don't like that. You got to move forward. We've been going sideways for too long. What you do is you take this rook and Yufixit so it goes straight.

“Then you go back to what I believe are the values we've gotten away from, namely checkers. You jump over all these other little pieces that just get in the way, go straight to the king, and you kill it. Game's over.”

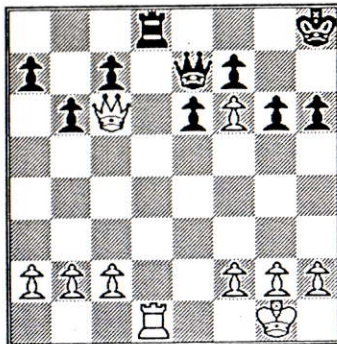
Ross Perot, one-time American Presidential Candidate, 21st May 1992, *Minneapolis Star Tribune*

Find The Moves

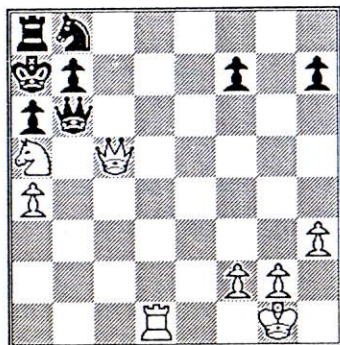
The positions are roughly in order of difficulty. Answers on page 16.



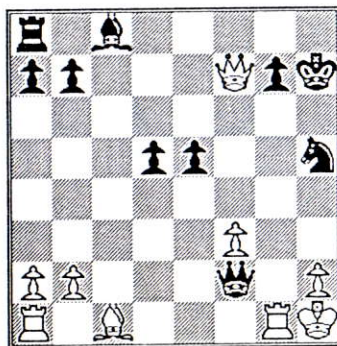
A: T Petrosian - Kozali
Montevideo 1954
White to play and win



B: Paglilla - Carbone
Argentina 1985
White to play and win



C: I Farago - K Bjerring
Gausdal 1989
White to move and win



D: D Pirrot - G Hertneck
BRD 1989
Black to move and win

Mostly 'armless'?

A LATE CHANGE to the line-up for the SWIFT Rapid Chess Challenge which starts this Sunday ... means Ivan Sokolov, of Bosnia, will replace Ljubomir Ljubojevic who broke both his arms while playing football.

from *The Daily Telegraph*

■ SADLY, MIKHAIL TAL, ex-world champion, died at the end of June. Leonard Barden related the following story in *The Guardian*: "At the 1960 Olympics in Liepzig, Fischer was interested in palmistry, offered to read Tal's hand, and pronounced 'I can read that the next world champion will be a young American grandmaster.' Tal instantly turned to the US No 2, Bill Lombardy, and said 'Congratulations, William.'"

Third Frome Congress 1992

Headlong gains British Championship spot

Steve Boniface

AN UNFORTUNATE CLASH with the Bristol League Congress dented the steady growth of this recently founded event, though the numbers were still slightly up on last year. The lure of two qualifying places for the British Championships and quadruple Leigh Grand Prix points brought seven 200+ graded players, but the real coup was the appearance of GM Michael Adams. Radio and television appeared to interview the star, who performed a miniature simultaneous to order. Yeovil's own Jack Rudd was expected to push him hard, but he failed to make any impression on the big boys and finished on a disappointing 2/5.

The only shock of Round One was Roland Cole's victory over Sven Zeidler. The other Cornish lad had lost a rook and two bishops for a queen, but somehow managed to tie his opponent in knots. Cole consolidated by drawing against Jersey's Hawes in his next game. Dave Littlejohns also gained a good half against Franklin. The rest of the stars marched on. Adams had had no trouble so far, and demolished Ken Norman's Gruenfeld devastatingly. He was joined on 3/3 only by IM John Emms. West of England Champion Gerald Moore got close by beating Littlejohns, but Zeidler rather floored Rudd.

The clash of Titans came earlier than expected in round four, but Adams was in no mood to delay in crushing Emms in spite of an awful-looking backward IQP. Moore and McEwan drew, so that a huge chasing group had now developed a point behind the grandmaster. The honour fell to Franklin, but he too fell to Adams. Emms beat McEwan and Moore beat Hutchings to share

second place, but the real interest was in the next score-group, as all those above had already qualified for the British. After some exciting games and a tie-break, Norman and Tim Headlong were offered the coveted places. Moore becomes the Somerset Champion.

The Norman family also did well in the Major section, where Dinah came first equal. David Egginton won the County trophy.

In the Minor there was another clean sweep, by Rex Willis. Here, the Somerset award went to Nailsea's Stuart Mills.

Final scores:

OPEN: 1 M Adams (Truro) 5; 2= J Emms (Norwich), G Moore (Hounslow) 4; 4= S Zeidler (Devizes), K Norman (Crowthorne), T Headlong (Clifton), I Clark (Oakmead) 3½.

MAJOR: 1= D Norman (Crowthorne), D Egginton (Nailsea), R Barlow (Southampton), E Sandercock (Chalfont) 4.

MINOR: 1 A R Willis (Exeter) 5; 2= P Short (Teignmouth), S Mills (Nailsea), C Gardiner (Reading), S Connor (Trowbridge) 4.

Graded games make finer players

NEW GRADING OFFICER, RAY STUDER, has got off to a flying start in his first season in the job. Ray told the League Management Committee in July, "The Bristol gradings were sent to the BCF a week before the closing date. The gradings should appear in the new national list in August."

In 1991, various mix-ups resulted in the Bristol gradings not appearing in the national list.

My Seven Memorable Games

Alan Ashby

IN A PUB at the Weymouth WECU championships a couple of years ago, Dave LeMoir showed Dave Collier, Colin Garwood and myself some of the brilliant games he played as a junior in the Bristol League in the late 1960's. 'Why don't you play like that these days, instead of all this 1.b3 nonsense?' I asked him afterwards. He had no answer. I hope it wasn't this question that led him to give up chess six months later!

I was much inspired by Fischer's 'My 60 Memorable Games' in 1969, hence the title of this article. I don't claim to be one-tenth as good as Fischer, but I have played twice as many games as him! Like Fischer, I have included some losses.

I hope other league players will follow my example and report on their happiest memories. I would particularly like to see the best games of Mike Binks and Chris Beaumont.

Game One

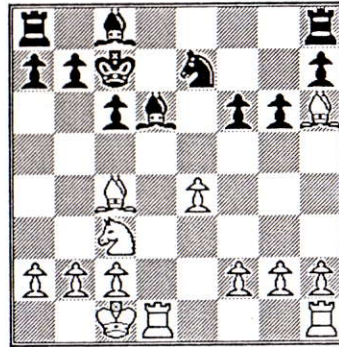
A Ashby - R Middleton, De La Salle College v Bolton County School, Lancashire Under-18 Team Championship, 1970. *Philidor's Defence*.

1.e4 e5 2.♘f3 d6 3.d4 ♘d7 4.♙c4 ♙e7?
5.dxe5 ♘xe5 6.♘xe5 dxe5 7.♙h5 g6

Black has fallen into a well-known trap, which appears in Fischer's book, and sheds a big pawn.

8.♙xe5 f6 9.♙d5 ♙xd5 10.♙xd5 ♙d6
11.♘c3 c6 12.♙c4 ♘e7 13.♙h6 ♘d7
14.0-0-0 ♘c7

Nowadays, I would settle for 15.♙g7, winning a second pawn, without hesitation. But at 17 I was in search of Truth and Beauty. As Scritti Politti put it, 'When I was 17/There was a world to know about'.



15.♙xd6! ♘xd6 16.♙d1+ ♘c7

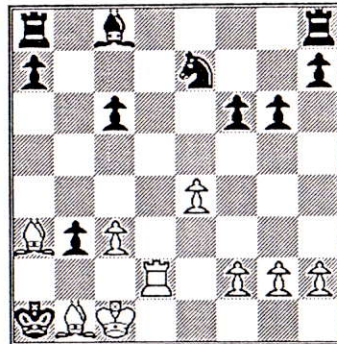
If 16...♘c5 17.♙e3+! ♘xc4 18.♙d4+ ♘c5
19.♙d5+ ♘c4 20.♙c5+ ♘b4 21.a3+#, or
16...♘e5 17.f4+#.

17.♙f4+ ♘b6 18.♘a4+ ♘a5 19.b3
(threatening ♙d2 mate) 19...b5 20.♙c7+
♘b4

A pretty point is 20...♘a6 21.♘c5+ mate!
21.c3+ ♘a3 22.♙d6+ ♘xa2 23.♙d2+
♘a1

I had reached this position in my analysis of 15.♙xd6 and assumed there must be a win. But by the time I found it my flag was hovering!

24.♙d3! bxa4 25.♙b1 axb3 26.♙a3 1-0



There is no way of stopping ♙b2 mate.

Game Two

A Ashby - J Burstow,
Manchester Open, 1970.
Danish Gambit, Goring Gambit.

1.e4 e5 2.♘f3 ♘c6 3.d4 exd4 4.c3 dxc3
5.♙c4 cxb2

The Goring Gambit was all the rage in England in those days, thanks to Jonathan Penrose's games and Len Barden's book *The Guardian Chess Book* - but not in Canada, where my 190-rated opponent came from. Most players declined the second pawn with 4...d5, though Tim Harding later claimed that Black could safely take the second pawn.

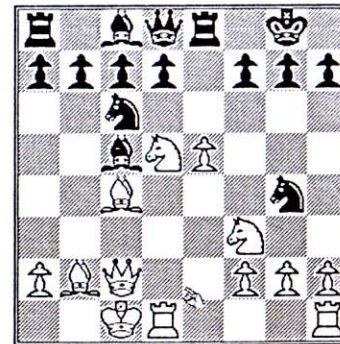
6.♙xb2 ♙b4+ 7.♘c3 ♘f6 8.♙c2 0-0
9.0-0-0 ♙e8

Barden considers only 9...d6

10.e5 ♘g4

If 10...♘xe5 11.♘xe5 ♙xe5 White has 12.♘d5 though Black can probably get away with 12...♙xd5, with three pawns for the exchange.

11.♘d5 ♙c5

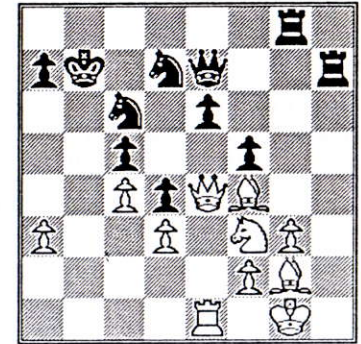


12.♘f6+! gxf6 13.♙xf7+! ♘xf7 14.♙xh7+
♘e6 15.exf6 d5 16.♘g5+ ♘d6 17.♘f7+
♘e6 18.♙he1+ ♙e3+ 19.♙xe3+ ♘xe3
20.♘xd8+ 1-0

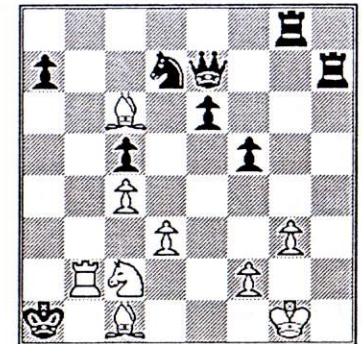
To be continued in the next issue.

Forced into a corner

Mating the Black king on a1, as Alan Ashby did in his first game in this article, is very rare. But, coincidentally, July's *British Chess Magazine* printed a game between GM David Norwood and Sean Marsh, at Walsall this year, where exactly the same thing happened:



28.♙xc6+ ♘xc6 29.♘xd4+ ♘b6
30.♙b1+ ♘a6 31.♙b7+ ♘a5
32.♙d2+ ♘a4 33.♙c6+ ♘xa3
34.♙c1+ ♘a2 35.♙b2+ ♘a1 36.♘c2+
1-0



Diary

Use this column to advertise your events. It's free, but please send your entries in plenty of time to the Editor.

1992

Aug 30. BRISTOL. League XI v Grendel cricket match. University Sports Ground, Coombe Dingle, 2:30 pm.

Sep 6-12. PAIGNTON. 42nd Annual Congress (FIDE rated). Contact: E A Crickmore, 5 Hereford Close, Woodbury Park, Exmouth, EX8 5QT. Tel: 0395 268293.

Sep 11-13. SWANSEA. British Isles Championships (sic). Contact: Frank Hatto, "Furzeland", Trimsaran Rd., Llanelli, Dyfed, SA15 4RN.

Sep 20. TAUNTON. WECU Senior and Graded Jamboree.

Oct 2-5. HANNOVER. Bristol-Hannover Exchange. Steve Boniface, 0272 515869.

Oct 3. Glos v Somerset

Oct 16-18. WEYMOUTH. The 28th Dorset Chess Congress. Contact: A D Rookes, 6 Milton Close, Weymouth, Dorset, DT4 7NB. Tel: 0305 774044.

Oct 24. Somerset v Dorset

Oct 26-30. FAMILY FESTIVAL OF CHESS. Wick Ferry Holiday Village, Christchurch, Dorset. Tournaments & coaching for adults & children with GM and 2 IM's. From £39 (accom incl)! Tel: 0772 621621.

Nov 14. Glos v Dorset, Wilts v Somerset
Nov 20-22. TORQUAY. 27th Torbay Congress. New venue. Contact: Phil Short, Flat 4, Ellacombe Court, Ellacombe Church Road, Torquay, TQ1 1LJ. Tel: 0803 214766.

Find the Moves - Answers

A: 1. ♖g7! Black resigned. If 1... ♜ad8 2. ♜f4 threatening ♜g6 mate.

B: 1. ♜a8!! Black resigned. If 1... ♜xa8 2. fxe7 followed by ♜d8.

C: 1. ♜b1! ♜d7 2. ♜d4! ♜xd4 3. ♜xb7+ # 1-0.

D: 1... ♜g4!! White resigned. If 2. ♜xg4 ♜f1+ 3. ♜g1 ♜g3+! 4. hxg3 ♜h3+ #

■ The next BCT will be out in early November. Publication dates and Final Copy dates for the rest of the season are:

Publication	Final Copy
7 November 1992	15 October 1992
7 January 1993	8 December 1992
7 March 1993	15 February 1993
7 May 1993	15 April 1993

The Final Copy date is the last date by which items must be submitted if they are to be included in the next issue.

There's never been a better time to subscribe to...

Bristol CHESS TIMES

Bristol Chess Times carries all the news about local chess.

Make sure you don't miss any of the great items coming in the next few issues.

Subscribe now and take advantage of our special offer!

On October 15th, the subscriptions are going to have to go up. But if you subscribe before then, you will save money by paying the old price.

Send £6.00 for ten issues (posted to your home), or £4.00 for ten issues (sent to your Bristol League club) to:

The Editor, Bristol Chess Times,
7 Maycliffe Park, Bristol, BS6 5JH

Cheques or POs should be made payable to *The Bristol & District Chess League.*

*After October 15th, the subscriptions will be £8.00 for ten issues (posted to home) and £6.00 for ten issues (sent to club). Existing subscribers can resubscribe for another ten issues at the old prices before 15th October - no need to wait until your current subscription expires.