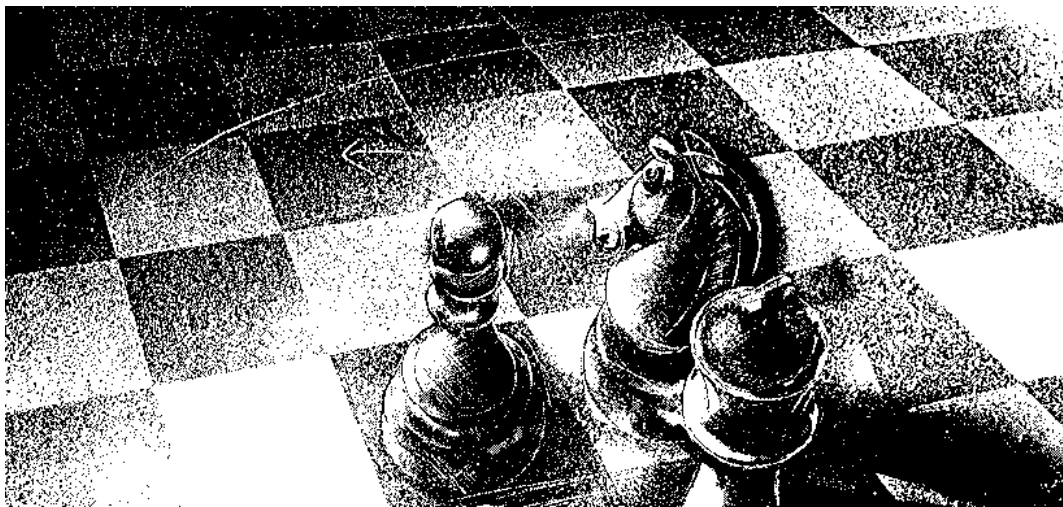


# The Bristol & District Chess League

## Handbook 2010-2011

*League Fixtures and Rules and details of local competitions*



# The Bristol & District Chess League

*Founded 7th October 1907*

*Affiliated to the West of England Chess Union  
and supporting the ECF via the Game Fee*

---

**President:** Mike Minshall 11 Chestermaster Close, Almondsbury, BS32 4EH  
Tel: 01454 619965 email: mw.minshall@virgin.net

**Vice-President:** Stuart Iles

Tel: 01275 842478 email: Stuart\_Iles@albemarle.com

**Life Vice-Presidents:** J.Beard (2001), J. Boyce (2009) M.E.Brigden (2004),  
C.M.Carter (1997), K.C.Cleak, H.J.Draisey (1999), F.Guyatt (2006), D.C.Jarrett,  
R.J.Johnson, D.E.March, J.G.Milton, G.Mobbs (2008), M.J.Passmore (2007)  
A.H.Williams (1994), M.J.Wood (1994), D.G.Woodruff (2003).

**Chairman:** John Paines, 13 Beaufort St. Bedminster, Bristol, BS3 3PH  
Tel: 0117 9631970 email: johnpaines@blueyonder.co.uk

**Congress Secretary:** Graham Mill-Wilson, 8 Lyndale Rd, Yate BS37 4DD  
Tel: 01454 880162, email: tugmw@blueyonder.co.uk

**General Secretary:** Roger Williams, 116 Mounthill Road, Hanham, Bristol,  
BS15 8QR Tel: 0117 9676734, email: rwilliams@hanhamchess.co.uk

**Match Secretary & Webmaster:**

Dave Tipper, 48 Blakeney Mills, Yate, Bristol, BS37 4XL  
Tel: 01454 856938, email: chessit@blueyonder.co.uk

**Recruitment & Publicity Officer & Treasurer:** Peter Saunders, PO Box 334.  
Patchway, Bristol, BS34 5ZN

Tel: 0117 9079215, email: chess@saundersmedia.f9.co.uk

**Grand Prix Secretary:** Steve Woolgar,

Tel: 0117 960 6158, e-mail: steve.woolgar@blueyonder.co.uk

**Junior Organizer:** Peter Saunders, PO Box 334. Patchway, Bristol, BS34 5ZN  
Tel: 0117 9079215, email: chess@saundersmedia.f9.co.uk

**4NCL Team Manager:** David Buckley

Tel: 01225 335669, email: david\_buckley@hotmail.com

**ECF Representative:** John Paines, 13 Beaufort St. Bedminster, Bristol, BS3  
3PH Tel: 0117 9631970 email: johnpaines@blueyonder.co.uk

**WECU Representative:** Roger Hardy, 19 Bellevue, Clifton, Bristol BS8 1DB,  
Tel: 0117 9744045, email: rogerhardybristol@googlemail.com

**Auditor:** Martyn Sellars Tel: 0117 9323586

**Trophy Secretary:** John Griffie Tel: 0117 9043783

## *Calendar for the 2010/2011 Season*

Web links for full details of all events

[www.bcmchess.co.uk/news/events.htm](http://www.bcmchess.co.uk/news/events.htm)

[www.englishchess.org.uk/?page\\_id=27](http://www.englishchess.org.uk/?page_id=27) ( 'Tournament Calendar' )

Note: Events printed in italics are provisional. You are recommended to check dates or obtain an official entry form before travelling to an event as details may change after the handbook has gone to press.

Calendar 2010 - 2011				
Sep	5-11	Sun-Sat	60 <sup>th</sup> Paignton Congress 'Diamond Jubilee' Oldway Mansion, Paignton	Mrs E.A.Crickmore 01752 768206 (before 9pm)
<i>Sep</i>	<i>tba</i>		<i>LMC Meeting</i>	<i>Roger Williams</i>
Sep	10-12	Fri-Sun	South Wales Autumn Congress Penarth Conservative Club	Kevin Staveley kevin.staveley@btinternet.com
Sep	12	Sun	Leamington Rapidplay Royal Spa Centre	Guy Greenland 01926 424360
<i>Sep</i>	<i>26</i>	<i>Sun</i>	<i>Keynsham Rapidplay Fear Institute, Keynsham</i>	<i>Duncan Macarthur 0117 9625229</i>
Oct	15-17	Fri-Sun	West Wales Congress Glamorgan Arms, Swansea	Les Philpin 01792 418711
Oct	22-24	Fri-Sun	The Jonathan Latham Memorial Congress, Gordano Community School, Portishead, Bristol	Ben Edgill edgillben@hotmail.com
Oct	30	Sat	Chipping Sodbury Rapidplay	Graham Mill-Wilson 01454 880162 0779 0167415
Nov	6-7	Sat-Sun	4NCL Weekend 1 & 2	David Buckley
<i>Nov</i>	<i>tba</i>		<i>LMC Meeting</i>	<i>Roger Williams</i>
Nov	8-12	Mon-Fri	10 <sup>th</sup> Royal Beacon Seniors Royal Beacon Hotel, Exmouth	Bob Jones bobjones@eclipse.co.uk
Nov	19-21	Fri-Sun	43 <sup>rd</sup> Torbay Chess Congress Riviera Centre, Torquay	R Chubb 01626 888255 (before 9pm )
Dec	3-5	Fri-Sun	Bristol Winter Congress Filton Sports & Leisure Centre	Graham Mill-Wilson 01454 880162
Dec Jan	28 5	Tue-Wed	Hastings International Congress <a href="http://www.hastingschess.org.uk">www.hastingschess.org.uk</a>	Con Power 01424 431970
Jan	7-9	Fri-Sun	South Wales Winter congress Penarth Conservative Club	I Eustis 01792 862115
Jan	15-16	Sat-Sun	4NCL Weekend 3 & 4	David Buckley
<i>Jan</i>	<i>tba</i>		<i>LMC Meeting</i>	<i>Roger Williams</i>

Calendar 2010 – 2011 *continued*

Feb	12	Sat	Bristol League Rapidplay Filton Sports & Leisure Centre	Graham Mill-Wilson 01454 880162 0779 0167415
Feb	19-20	Sat-Sun	4NCL Weekend 5 & 6	David Buckley
Feb	25-27	Fri-Sun	35 <sup>th</sup> East Devon Congress Corn Exchange, Fore St, Exeter	A Maynard 01363 773313
Feb	25-27	Fri-Sun	39 <sup>th</sup> Dyfed Congress Fishguard Bay Hotel	Roland Spencer 01239 682703
Feb	26-27	Sat-Sun	Wiltshire & West of England Junior Open Championships Swindon	Bev Schofield 01793 487575
Mar	11-13	Fri-Sun	Bristol Open Congress (Incorporating) Bristol Individual Champions Filton Sports & Leisure Centre	Graham Mill-Wilson 01454 880162 0779 0167415
Mar	26-27	Sat-Sun	Castle Chess Hereford Congress	Tony Corfe
Mar	26-27	Sat-Sun	4NCL Weekend 7 & 8	David Buckley
Mar	tba		LMC Meeting	Roger Williams
Apr	22-25	Fri-Mon	64th WECU Easter Congress Royal Beacon Hotel, Exmouth www.chessdevon.co.uk/	Andrew Footner andrew@footner.wanadoo.co.uk
Apr May	30 – 2	Sat-Mon	4NCL Weekend 9 & 10 & 11	David Buckley
May	6-8	Fri-Sun	22nd Frome Congress www.somersetchess.org/	Gerry Jepps 01749 344191
May	tba		League AGM	Roger Williams 0117 9676734
May	28-30	Sat-Mon	44th Cotswold Congress St Edwards School, Cheltenham	Ron Powis 01453 762518
Jun	10-12	Fri-Sun	Yeovil Congress Parcroft School, Yeovil	Jack Rudd JackKelshallRudd@aol.com
Jun	18	Sat	Bristol Rapidplay	Graham Mill-Wilson
July	tba		LMC Meeting	Roger Williams
July Aug	24 6		British Championships Sheffield	www.englishchess.org.uk/
Aug	19-21	Fri-Sun	Steve Boniface Memorial Congress	Graham Mill-Wilson 01454 880162 07790167415

<p><u>Congress Secretary</u> Graham Mill-Wilson Tel: 01454 880162 0779 0167415 e-mail tugmw@blueyonder.co.uk</p>	<p><u>www.chessit.co.uk</u>  Will have an up to date listing of local Congresses &amp; Rapidplays</p>
<p>David Buckley ( Bristol 4NCL Captain ) http://www.4ncl.co.uk/1011_dates.htm ( for venues ) Tel: 01225 335669 e-mail david_buckley@hotmail.com</p>	

---

## *Club Directory*

---

Please note: – Bath and Patchway Chess Club have new venues.

<i>h</i>	Home night(s) for matches (may meet on other nights)	<i>W</i>	Wheelchair access
<i>t&amp;c</i>	Tea and coffee available		
<i>b</i>	Licensed bar	<i>C</i>	Number of chess clocks available for use

### **Bath**

The Bungalow, 33 Kipling Avenue, Beechen Cliff School, Bath, BA2 4RE  
( Close to the entrance gates of the school )

*h – Wednesdays w t&c 18c*

John Leon, 61 Entry Hill Park, Bath BA2 5ND

Tel: 01225 836067 email: jecaleon@hotmail.com

### **Bath University**

University of Bath, Claverton Down, Bath BA2 7AY

( Please Check on Playing Room with the Secretary and on website )

*h – Thursday w t&c 8c*

Nic Triantafilidis email: nt246@bath.ac.uk

### **Bristol & Clifton**

The Polish Ex Servicemans Club, 50 St Pauls Road, Clifton, Bristol BS8 1LP

*h – Wednesday b 16c*

Alan Papier, 17 First Ave, St Annes Bristol BS4 4DU

Tel: 07899826515 email: chinadoc@chinadoc.force9.co.uk

Website: <http://www.cliftonchess.pwp.blueyonder.co.uk>

### **Bristol Cabot**

The Colosseum, Redcliff Hill, Redcliff, Bristol BS1 6SJ

Tel: 0117 9870070

*h – Tuesday b t&c 6c*

Neil Derrick, 21 Sloan Street, St George, Bristol BS5 7AD

Tel: 0117 939 3013 email: neilderrick@blueyonder.co.uk

## **Clevedon**

Clevedon Cricket Club, Esmond Grove, Dial Hill, Clevedon, Somerset  
BS21 7HW Tel: 01275 877585

*h – Monday b w 12c*

David Peters, 12 Nightingale Rise, Portishead, Bristol BS20 8LN.

Tel: 01275 817996 email: david@peters4005.fsnet.co.uk

## **Downend & Fishponds**

Downend Cricket Club, WG Grace Memorial Ground, Downend Road, Downend,  
Bristol. Tel: 0117 956 0164

*h – Tuesday b w 14c*

Richard Palmer, 27 Castle Road, Pucklechurch, Bristol BS16 9RF.

Tel: 0117 937 3761 email: richardpalmer47@tiscali.co.uk

website: <http://downendchessclub.co.uk/>

## **Grendel**

Bristol County Sports Club, 40 Colston Street, Bristol. Tel: 0117 927 3534

*h – Tuesday b 8c*

Patrick Flexman Tel: 0777 312 0525 email: Patrick.Flexman@boipluk.co.uk

## **Hanham**

Hanham Community Centre, Hanham High Street, Hanham, Bristol.

Tel: 0117 967 4439

*h – Tuesday b t&c 12c*

Roger Williams, 116 Mounthill Road, Hanham, Bristol BS15 8QR.

Tel: 0117 967 6734 email: rwilliams@hanhamchess.co.uk

website: [www.hanhamchess.co.uk/](http://www.hanhamchess.co.uk/)

## **Harambee**

The Malcolm X Centre, 141 City Road, St Paul's, Bristol.

*h - Thursday b w 12c*

Errol Campbell, Port Sea, 141 Beaufort Road, St George, Bristol BS5 8JG.

Tel: 0117 955 7148 email: errol.campbell@blueyonder.co.uk

### **Horfield & Redland**

1, Redland Park, Redland, Bristol.

*(next to United Reformed Church, Whiteladies Road)*

*h – Tuesday t&c 17c*

Howard Millbank, 100 Queensdown Gardens, Brislington, Bristol BS4 3JG.

Tel: 0117 971 9912 email: hmillbank@btinternet.com

website: www.horfieldchess.org.uk

### **Keynsham**

J N Fear Institute, High Street, Keynsham.

*h – Wednesday t&c 18c*

Duncan Macarthur, 26 Henleaze Road, Henleaze, Bristol BS9

Tel: 0117 9625229 email: duncan\_macarthur@ukls.net

### **Nailsea & Congresbury**

Mizzymead Recreation Centre, Mizzymead Rise, Nailsea, Bristol.

Tel: 01275 854181

*h – Monday b w t&c 14c*

Terry Stone, 21 Medway Avenue, Nailsea, Bristol.

Tel: 01275 856544 email: terencestone1@msn.com

### **Patchway**

The Casson Centre, Rodway Road, Patchway BS34 5PF

*h – Thursday t&c w 8c*

Kelvin Harvey, 112 Durban Road, Patchway, Bristol BS34 5HN.

Tel: 0117 904 4216 email: kelvnikki@aol.com

### **Pete's Potentials**

Cifton College Preparatory School, The Avenue, Clifton Down, Bristol BS8 3JG

*h – Monday*

Peter Saunders, PO Box 334. Patchway, Bristol, BS34 5ZN

Tel: 07722 796195 email: chess@saundersmedia.f9.co.uk

*( note: 65 min on clock Home & Away matches – finish by 9.45pm )*

## **South Bristol**

Whitchurch Folk House, East Dundry Road, Whitchurch, Bristol.

Tel: 01275 832222

*h – Thursday b 12c*

Gerald Mobbs, 694 Whitchurch Lane, Whitchurch, Bristol BS14 0EJ.

Tel: 01275 836280 (989 4448) email: Gerald.Mobbs@axa-sunlife.co.uk

website: <http://freewebs.com/southbristolchess/>

## **Thornbury**

The Chantry, Castle Street, Thornbury. Tel: 01454 414268

*h – Tuesday b t&c 12c*

Mike Minshall, 11 Chestermaster Close, Almondsbury, Bristol BS32 4EH.

Tel: 01454 619965 email: mw.minshall@virgin.net

## **University of Bristol**

The Students' Union, Queens Road, Clifton, Bristol.

Tel: 0117 9735035 email: unichessclub@hotmail.com

*h – Wednesday b w t&c 8c*

Jack Paton email: jp8861@bristol.ac.uk

website: [www.bris.ac.uk/Depts/Union/Chess](http://www.bris.ac.uk/Depts/Union/Chess)

## **UWE**

Frenchay Campus, The Students Union, Block F

( Meeting Room 1 on the 5<sup>th</sup> floor )

*h – Wednesday b t&c 8c*

Cerdrik Hee, Tel: 07916 054745 email: ceders@hotmail.co.uk

## **Yate & Sodbury**

Jackson Social Club, Station Road, Yate, Bristol BS37 5HR

*h – Tuesday b w t&c 18c*

Graham Mill-Wilson, 8 Lyndale Road, Yate, Bristol BS37 4DD.

Tel: 01454 880162 mob: 0779 0167415 email: Tugmw@blueyonder.co.uk



## League Tables 2009 - 2010

### Division One

Club		Played	Pts	Game Points	Def Pts
Clifton	A	16	<b>31</b>	75	0
Bath	A	16	<b>26</b>	60.5	1
Horfield	A	16	<b>18</b>	51	1
Downend	A	16	<b>17</b>	52.5	0
Clifton	B	16	<b>15</b>	52.5	16
Clevedon	A	16	<b>14</b>	41	1
Downend	B	16	<b>11</b>	40	0
Horfield	B	16	<b>7</b>	30	6
University	A	16	<b>3</b>	28.5	14

### Division Two

Club		Played	Pts	Game Points	Def Pts
Thornbury		16	<b>26</b>	64	1
South Bristol	A	16	<b>25</b>	59.5	0
Clifton	C	16	<b>22</b>	54.5	1
Horfield	C	16	<b>16</b>	45.5	0
Bath	B	16	<b>14</b>	47	5
Grendel		16	<b>13</b>	43.5	5
Hanham	A	16	<b>10</b>	36	1
Keynsham	A	16	<b>9</b>	41.5	5
Clevedon	B	16	<b>9</b>	39.5	1

### Division Three

Club		Played	Pts	Game Points	Def Pts
Bath Uni		18	<b>36</b>	88.5	0
Yate	A	18	<b>24</b>	60	9
Downend	C	18	<b>20</b>	62.5	0
Hanham	B	18	<b>17</b>	53	0
Clifton	D	18	<b>17</b>	53	14
Cabot		18	<b>17</b>	47.5	18
Harambee	A	18	<b>13</b>	43.5	17
South Bristol	B	18	<b>12</b>	46	7
Keynsham	B	18	<b>11</b>	46	7
Patchway		18	<b>10</b>	37	3

### Division Four

Club		Played	Pts	Game Points	Def Pts
Yate	B	19	<b>34</b>	54.5	2
Horfield	D	19	<b>28</b>	50.5	0
Nailsea		19	<b>28</b>	48	1
University	B	19	<b>24</b>	42	5
Downend	D	20	<b>21</b>	43	0
Downend	E	20	<b>18</b>	37	0
Downend	F	19	<b>17</b>	33.5	0
Petes Potent		18	<b>14</b>	32	0
Harambee	B	15	<b>8</b>	21.5	0
Hanham	C	17	<b>3</b>	22.5	7
UWE		13	<b>2</b>	11.5	11

# The Steve Boniface Tankard Trophy Match for Best Attack

David Peters ( Clevedon Chess Club ) received the above trophy for the following game as White played in a league game against Hanham last season.

Peters,David v Carver,Anthony [B34] 1 - 0

Hanham A v Clevedon B ( Board 5 ) Division 2, 23rd March 2010

*[Annotations - Tipper,Dave]*

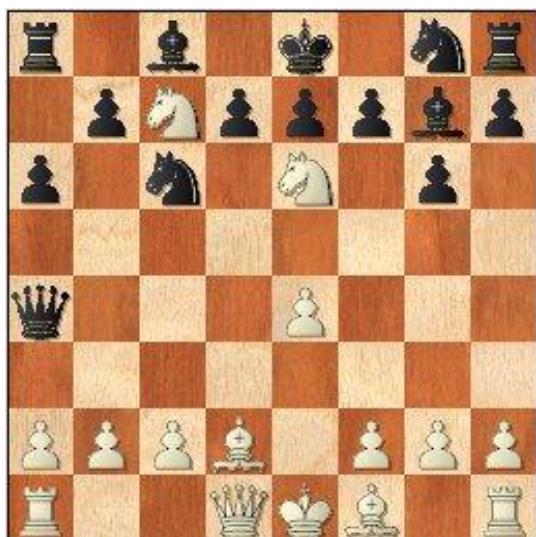
**1.e4 c5 2.Nf3 Nc6 3.d4 cxd4 4.Nxd4 g6 5.Nc3 Bg7 6.Be3 Qb6? Diagram**



Black's Queen will soon have no retreat squares

[6...Nf6 7.Nxc6 bxc6 8.e5 Ng8 is perfectly playable for Black ; 6...d6 7.Qd2 Nf6 8.f3 0-0 leads to the mainline Sicilian Dragon]

**7.Ncb5 a6? [7...Bxd4! exchanges on d4 is Black's last hope for equality] 8.Ne6! Qa5+ 9.Bd2 Qa4 Falls for a mate in 1 but the alternative is to throw in the Queen for insufficient material. 10.Nbc7# Diagram**



---

## *League Honours 2009/10*

---

### League Championships

Div 1	Clifton A	Div 4	Yate B
Div 2	Thornbury		
Div 3	Bath University		

### Team Knock-Outs

Team KO                      Bath                      Minor KO                      South Bristol  
Summer Lightning      Clifton

### Individual Championships

Sect.1      Chris Beaumont ( Clifton )                      Sect.3      Not Awarded  
Sect.2      Graham Mill-Wilson ( Yate )                      Sect.4      Not Awarded

<b>Alan Ashby Salver</b>	James Jackson ( Bath University )
<b>Steve Boniface Tankard Award</b>	David Peters ( Clevedon )

---

## *Internet Directory*

---

Bristol League Website	<a href="http://www.chessit.co.uk">www.chessit.co.uk</a>
Clifton	<a href="http://www.cliftonchess.pwp.blueyonder.co.uk">www.cliftonchess.pwp.blueyonder.co.uk</a>
Downend	<a href="http://downendchessclub.co.uk">http://downendchessclub.co.uk</a>
Hanham	<a href="http://www.hanhamchess.co.uk/">http://www.hanhamchess.co.uk/</a>
Horfield	<a href="http://www.horfieldchess.org.uk">www.horfieldchess.org.uk</a>
South Bristol	<a href="http://freewebs.com/southbristolchess/">http://freewebs.com/southbristolchess/</a>
University of Bristol	<a href="http://www.bris.ac.uk/Depts/Union/Chess/">www.bris.ac.uk/Depts/Union/Chess/</a>
West Country Chess Blog	<a href="http://westcountrychess.blogspot.com/">http://westcountrychess.blogspot.com/</a>
Castle Chess Congresses	<a href="http://www.castlechess.co.uk">www.castlechess.co.uk</a>
WECU	<a href="http://www.chessdevon.co.uk">www.chessdevon.co.uk</a>
4NCL	<a href="http://www.4ncl.co.uk">www.4ncl.co.uk</a>
The Chess Exchange	<a href="http://www.chessexchange.com/forum/">www.chessexchange.com/forum/</a>
Gloucester Chess Club	<a href="http://www.baltic22.freemove.co.uk/">www.baltic22.freemove.co.uk/</a>
Somerset chess	<a href="http://www.somersetchess.org/">www.somersetchess.org/</a>
South Wales Chess	<a href="http://www.southwaleschess.co.uk/SWI/">www.southwaleschess.co.uk/SWI/</a>
Stroud Chess	<a href="http://easytorecall.com/stroudchess/">http://easytorecall.com/stroudchess/</a>
Spectrum Chess	<a href="http://www.spectrumchess.com/">www.spectrumchess.com/</a>
English Chess Federation	<a href="http://www.englishchess.org.uk/">www.englishchess.org.uk/</a>
Chess Direct Catalogue Shop	<a href="http://www.chessdirect.co.uk">www.chessdirect.co.uk</a>
British Chess Magazine	<a href="http://www.bcmchess.co.uk">www.bcmchess.co.uk</a>
London Chess Centre	<a href="http://www.chesscenter.com">www.chesscenter.com</a>
Internet Chess Club	<a href="http://www.chessclub.com">www.chessclub.com</a>
Chessbase	<a href="http://www.chessbase.com">www.chessbase.com</a>

---

## *4 Nations Chess League Tables 2008-2009*

---

**Bristol Team contact details:** David Buckley (Manager)  
21 Shakespeare Avenue, Bath BA2 4RF  
Tel: (01225) 335669 (H) or (07742) 518374 (mobile)  
[david\\_buckley@hotmail.com](mailto:david_buckley@hotmail.com)

[www.4ncl.co.uk/0910\\_dates.htm](http://www.4ncl.co.uk/0910_dates.htm) ( venues for 2010-11 season )

### **Division 1 Championship Pool tables**

Team	Won	Drawn	Lost	Points
WOOD GREEN HILSMARK KINGFISHER 1	6	1	0	13
PRIDE AND PREJUDICE	5	1	1	11
BARBICAN 4NCL 1	5	0	2	10
WHITE ROSE 1	4	0	3	8
WOOD GREEN HILSMARK KINGFISHER 2	3	0	4	6
GUILDFORD-A&DC 1	2	0	5	4
CAMBRIDGE UNIVERSITY 1	1	1	5	3
THE ADS	0	1	6	1

### **Division 1 Demotion Pool tables**

Team	Won	Drawn	Lost	Points
BETSSON.COM	7	0	0	14
BARBICAN 4NCL 2	5	0	2	10
OXFORD 1	4	0	3	8
PANDORA'S BOX GRANTHAM	3	1	3	7
SOUTH WALES DRAGONS	3	0	4	6
GUILDFORD-A&DC 2	1	2	4	4
POISONED PAWNS 1	2	0	5	4
JUTES OF KENT	1	1	5	3

*After 7 rounds, the top 4 teams in each preliminary pool qualify for the final championship pool. At the end of the season 4 teams will be relegated*

## Division 2 Championship Pool tables

Team	Won	Drawn	Lost	Points
SAMBUCA SHARKS	5	1	1	11
CHEDDLETON	4	1	2	9
WARWICKSHIRE SELECT 1	3	2	2	8
E2E4.ORG.UK 1	4	0	3	8
BARBICAN 4NCL YOUTH	3	2	2	8
AMCA DRAGONS	2	2	3	6
KINGS HEAD	2	1	4	5
POISONED PAWNS 2	0	1	6	1

## Division 2 Demotion Pool tables

Team	Won	Drawn	Lost	Points
ANGLIAN AVENGERS	5	0	2	10
WESSEX 1	5	0	2	10
CELTIC TIGERS 1	4	1	2	9
BRISTOL 1	4	1	2	9
WHITE ROSE 2	4	1	2	9
BROWN JACK	3	1	3	7
GUILDFORD-A&DC 3	1	0	6	2
FCA SOLUTIONS 1	0	0	7	0

*After 7 rounds, the top 4 teams in each preliminary pool qualify for the final championship pool. At the end of the season 4 teams will be relegated.*

## Division 3 table

Team	Won	Drawn	Lost	Points
RHYFELWYR ESSYLLWG	8	1	2	17
SAMBUCA BLACK SHEEP	7	3	1	17
3CS	8	0	3	16
CAMBRIDGE UNIVERSITY 2	7	1	3	15
WESSEX 2	7	1	3	15
WARWICKSHIRE SELECT 2	6	2	3	14
KJCA KINGS	6	2	3	14
FCA SOLUTIONS 2	6	1	4	13
THE FULL PONTY	5	3	3	13
SUSSEX SMART CONTROLS	6	1	4	13
E2E4.ORG.UK 2	5	3	3	13
ICENI	4	4	3	12
NOTTINGHAMSHIRE 1	5	2	4	12
NOTTINGHAMSHIRE 2	5	2	4	12
OXFORD 2	4	3	4	11
AMCA RHINOS	5	1	5	11
BRAILLE CHESS ASSOCIATION	4	3	4	11
AMCA HIPPOS	5	1	5	11
GLOUCESTERSHIRE GAMBITS	4	2	5	10
BRISTOL 2	4	2	5	10
KJCA KNIGHTS	4	1	6	9
GUERNSEY MATES	4	0	7	8
BRISTOL 3	3	2	6	8
SCS	4	0	7	8
HACKNEY	3	1	7	7
E2E4.ORG.UK 3	3	1	7	7
BEAUTY AND THE BEASTS	3	1	7	7
CELTIC TIGERS 2	3	1	7	7
OXFORD 3	3	0	8	6
HALESOWEN	2	1	8	5
GUILDFORD-A&DC 4	1	2	8	4
AMCA CHEETAHS	1	0	10	2

*The top 4 teams will be promoted to Division 2.*

---

## *League Tournaments*

---

### **The 34<sup>th</sup> League Congress**

Due to falling numbers at the league congress, this year will see a change. There will be a congress open to all, probably in February or March 2011, in which the League Championships will be incorporated. This is likely to have three sections. In each section there will be a trophy for the highest placed Bristol league player, with tie breaks being used if necessary to decide the winners. The trophy winner in the Open section will be Bristol champion for the year.

### **The 15<sup>th</sup> League Rapidplay**

This will also be an open tournament. It will consist of a six round Swiss in either two or three sections, with all moves in 25 minutes. Games may be graded.

### **Other Bristol Congresses**

The Bristol Winter Congress will take place on the weekend of 3<sup>rd</sup>-5<sup>th</sup> December. This will be a five round Swiss, probably with three sections. A British Championship Qualifying Place will be awarded at this event, allocated by WECU.

The Steve Boniface Memorial Congress will take place in August 2011.

All of the above tournaments will be included in the **Bristol Chess Grand Prix**.

Entry forms for all these tournaments will be available on the league website

[www.chessit.co.uk](http://www.chessit.co.uk)

and from the Congress Secretary,

Graham Mill-Wilson, 8 Lyndale Road, Yate, Bristol, BS37 4DD

Tel: 01454 880162 or

email [tugmw@blueyonder.co.uk](mailto:tugmw@blueyonder.co.uk)

---

## *Arbiters in the Bristol League*

---

Qualification for the title of ECF Arbiter consists of passing a formal written examination with a score of 80% or greater. The syllabus includes knowledge of, and ability to apply, the Laws of Chess, pairing rules, speed chess regulations, and various administrative functions. The full details are in the current ECF yearbook. In addition, the candidate must show ability to apply the theory in practice, and have performed to a satisfactory level at several tournaments.

From time to time, training courses are held in the Bristol area to prepare students for qualification. In addition, the Chess Arbiters' Association exists to support and encourage new and existing members.

The following are recognised ECF Arbiters:

<b>Jerry Humphreys</b>	<b>0117 9650097</b>	<b>Tyson Mordue</b>	<b>0117 9325557</b>
<b>John Richards</b>	<b>0117 9551912</b>	<b>David Woodruff</b>	<b>0117 9862301</b>
<b>Jack Rudd</b>	<b>01237 475185</b>		

The following have passed the ECF Arbiter Examination:

<b>Colin Axon</b>	<b>0117 9734093</b>
<b>Neil Palmer</b>	<b>0117 9623119</b>
<b>Graham Mill-Wilson</b>	<b>01454 880162</b>

---

## *Acknowledgements*

---

This year's Handbook was a joint effort between several League Officers: Graham Mill-Wilson, Dave Tipper, Peter Saunders and Steve Woolgar.

Thanks also go to our printers, Regent Lazerprint.



## *Summary of Playing Conditions*

The full rules of the League are given at the back of this Handbook. This table is extracted from those rules.

<b>Competition</b>	<b>Playing session</b>	<b>Normal time limit</b>	<b>Alternative time limit (if agreed by both players in advance)</b>	<b>then if not finished (Alternative time limit)</b>
Division 1	7.30 - 10.30pm	All moves in 1½ hrs	36 in 1½ hrs then 24 per hr	Adjourn All moves in 1½ hours
Divisions 2, 3 & 4	7.30 - 10.30pm	All moves in 1½ hrs	42 in 1½ hrs then 6 per ¼ hr	Adjourn All moves in 1½ hours
Team Knock-Out	7.30 - 10.30pm	All moves in 1½ hrs	n/a	None
Minor Team Knock-Out	7.30 - 10.30pm	All moves in 1½ hrs	n/a	None

### *Grading Thresholds (Rule 6.3)*

The League allows players flexibility in “playing up”, and the option for some players to “play down”.

Rule 6.3 has the following effects:

- a) Whichever team you are registered for, you may play up as many times as you wish for higher teams in your club.
- b) **Graded players only** - If you are registered for a team but are below the grading threshold for a lower team in your club, you may play as many times as you wish for that lower team.
- c) However where the lower team is in the same division as the team for which you are registered, the grading threshold applicable is that for the division immediately below (hence the inclusion of “Division 5” in the table below).
- d) If you are playing down **to** a division where your club has more than one team competing, you may only play for one of the less senior of those teams if your grade is **also** below the threshold for playing down **within** that division (see point c above and Rule 6.3g).

*“A fuller explanation with examples can be found on the League website”*

**Ungraded players must** be used in a team appropriate to their perceived playing strength. The LMC may impose a penalty if this condition is abused.

The grading thresholds for playing down to the four divisions in the 2010-11 season are:

<b>DIVISION</b>	<b>↓2</b>	<b>↓3</b>	<b>↓4</b>	<b>↓5</b>
<b>GRADING THRESHOLD</b>	<b>151</b>	<b>131</b>	<b>109</b>	<b>80</b>

---

## *Bristol Grand Prix 2009 - 2010*

---

Eleven events subscribed to the Grand Prix this year (an increase of two from the previous year) and of those five were League based and six were Club based and my thanks to the organizers, both for running the events and for including them in the Grand Prix.

This year the sections were divided by grade, and the resulting effect has been positive with a fairly similar number of players qualified for each section and as such I am keeping the structure the same for the new season.

The inclusion of extra events has meant that the prize fund has increased slightly from the previous season to £327.00, which in turn has meant an increase in the prize money.

Over the year 116 League members from 16 clubs and schools competed in the eleven events on 278 occasions scoring a total of 4483.5 Grand Prix points. Thirteen players scored 100 points or more (up from last year's 7) and of these thirteen, three passed 150 points and one made it past 200.

The Prizewinners are as follows

<u>Open</u>	1 <sup>st</sup>	James Sherwin	Bath	£45.00
	2 <sup>nd</sup>	Dominic Bennett	Clifton	£20.00
	3 <sup>rd</sup>	Paul Helbig	Keynsham	£10.00
<u>U-170</u>	1 <sup>st</sup>	Alan Papier	Clifton	£45.00
	2 <sup>nd</sup>	Roger Hardy	Grendel	£20.00
	3 <sup>rd</sup>	Howard Millbank	Horfield	£10.00
<u>U-140</u>	1 <sup>st</sup>	Duncan MacArthur	Keynsham	£45.00
	2 <sup>nd</sup>	Graham Strickland	Horfield	£20.00
	3 <sup>rd</sup>	Graham Mill-Wilson	Yate	£10.00
<u>U-110</u>	1 <sup>st</sup>	Harvey Atkinson	Horfield	£45.00
	2 <sup>nd</sup>	Geoff Gammon	Downend	£20.00
	3 <sup>rd</sup>	Simon Denney	Bristol Univ	£10.00
<u>Junior</u>	1 <sup>st</sup>	Tom Thorpe	Pete's Potentials	£15.00 + Trophy
	2 <sup>nd</sup>	Aidan Chivers	Pete's Potentials	£10.00
	3 <sup>rd</sup>	Matthew Wilson	Downend	£5.00
<u>Team</u>	1 <sup>st</sup>	Bristol & Clifton		£15.00

Anyone wishing to register an event should contact me by either  
Tel: 0117 960 6158 (Answerphone) or email: [steve.woolgar@blueyonder.co.uk](mailto:steve.woolgar@blueyonder.co.uk)

Steve Woolgar

Grand Prix Secretary

---

# *League Knockouts 2010 - 2011*

---

## **League Knockout 2010 -2011**

### Quarter Finals

Clifton v Bath University	Wednesday 1 <sup>st</sup> December 2010
Downend v Bath	Tuesday 30 <sup>th</sup> November 2010
South Bristol v Keynsham	Thursday 2 <sup>nd</sup> December 2010
Thornbury v Horfield	Tuesday 30 <sup>th</sup> November 2010

*Semi Final 14-18<sup>th</sup> February 2011*

*Final 2<sup>nd</sup> -6<sup>th</sup> May 2011*

## **Minor League Knockout 2010 -2011**

### Preliminary Round

South Bristol v Grendel	Thursday 30 <sup>th</sup> September 2010
Keynsham v Clevedon	Thursday 29 <sup>th</sup> September 2010

### Quarter Finals

Bath v Horfield	Wednesday 10 <sup>th</sup> November 2010
Clifton v Downend	Wednesday 10 <sup>th</sup> November 2010
Keynsham/Clevedon v South Bristol/Grendel	Mon/Wed 8/10 <sup>th</sup> November 2010
Yate v Hanham	Tuesday 9 <sup>th</sup> November 2010

*Semi Final 24<sup>th</sup> – 28<sup>th</sup> January 2011*

*Final 25<sup>th</sup> – 29<sup>th</sup> April 2011*



---

*League Fixtures 2010 - 2011*

---

**Division One**

<b>Bath A</b>							
Wed	08-Sep	H	Downend A	Tue	25-Jan	A	Thornbury A
Wed	15-Sep	A	Clifton A	Wed	02-Feb	H	Horfield A
Wed	29-Sep	H	South Bristol A	Tue	08-Feb	A	Downend A
Tue	12-Oct	A	Horfield A	Wed	23-Feb	H	Downend B
Wed	20-Oct	H	Clifton B	Thu	10-Mar	A	South Bristol A
Wed	03-Nov	H	Thornbury A	Wed	23-Mar	H	Clevedon A
Mon	15-Nov	A	Clevedon A	Wed	30-Mar	A	Clifton B
Tue	07-Dec	A	Downend B	Wed	13-Apr	H	Clifton A

<b>Clevedon A</b>							
Mon	13-Sep	H	Downend B	Tue	04-Jan	A	Downend B
Tue	05-Oct	A	Thornbury A	Mon	17-Jan	H	Horfield A
Tue	19-Oct	A	Downend A	Wed	02-Feb	A	Clifton A
Mon	25-Oct	H	Clifton A	Mon	07-Feb	H	Thornbury A
Tue	02-Nov	A	Horfield A	Wed	02-Mar	A	Clifton B
Mon	15-Nov	H	Bath A	Mon	07-Mar	H	Downend A
Thu	25-Nov	A	South Bristol A	Wed	23-Mar	A	Bath A
Mon	13-Dec	H	Clifton B	Mon	04-Apr	H	South Bristol A

<b>Clifton A</b>							
Wed	15-Sep	H	Bath A	Wed	12-Jan	H	Thornbury A
Tue	28-Sep	A	Thornbury A	Tue	25-Jan	A	Downend B
Wed	13-Oct	H	Downend B	Wed	02-Feb	H	Clevedon A
Mon	25-Oct	A	Clevedon A	Thu	24-Feb	A	South Bristol A
Wed	10-Nov	H	South Bristol A	Wed	16-Mar	H	Clifton B
Wed	24-Nov	A	Clifton B	Tue	22-Mar	A	Horfield A
Wed	08-Dec	H	Horfield A	Wed	06-Apr	H	Downend A
Tue	14-Dec	A	Downend A	Wed	13-Apr	A	Bath A

<b>Clifton B</b>						
Wed	08-Sep	H	Horfield A	Thu	13-Jan	A South Bristol A
Tue	21-Sep	A	Downend A	Wed	26-Jan	H Downend A
Wed	06-Oct	H	South Bristol A	Tue	08-Feb	A Horfield A
Wed	20-Oct	A	Bath A	Wed	02-Mar	H Clevedon A
Wed	03-Nov	H	Downend B	Wed	16-Mar	A Clifton A
Tue	09-Nov	A	Thornbury A	Wed	30-Mar	H Bath A
Wed	24-Nov	H	Clifton A	Tue	05-Apr	A Downend B
Mon	13-Dec	A	Clevedon A	Wed	20-Apr	H Thornbury A

<b>Downend A</b>						
Wed	08-Sep	A	Bath A	Tue	18-Jan	H South Bristol A
Tue	14-Sep	A	Thornbury A	Wed	26-Jan	A Clifton B
Tue	21-Sep	H	Clifton B	Tue	08-Feb	H Bath A
Tue	05-Oct	A	Downend B	Tue	01-Mar	A Horfield A
Tue	19-Oct	H	Clevedon A	Mon	07-Mar	A Clevedon A
Thu	04-Nov	A	South Bristol A	Tue	15-Mar	H Downend B
Tue	09-Nov	H	Horfield A	Wed	06-Apr	A Clifton A
Tue	14-Dec	H	Clifton A	Tue	12-Apr	H Thornbury A

<b>Downend B</b>						
Mon	13-Sep	A	Clevedon A	Tue	04-Jan	H Clevedon A
Tue	05-Oct	H	Downend A	Tue	18-Jan	A Thornbury A
Wed	13-Oct	A	Clifton A	Tue	25-Jan	H Clifton A
Tue	26-Oct	H	Horfield A	Tue	01-Feb	H South Bristol A
Wed	03-Nov	A	Clifton B	Wed	23-Feb	A Bath A
Tue	23-Nov	H	Thornbury A	Tue	15-Mar	A Downend A
Tue	07-Dec	H	Bath A	Tue	05-Apr	H Clifton B
Thu	16-Dec	A	South Bristol A	Tue	19-Apr	A Horfield A

<b>Horfield A</b>							
Wed	08-Sep	A	Clifton B	Mon	17-Jan	A	Clevedon A
Tue	14-Sep	H	South Bristol A	Wed	02-Feb	A	Bath A
Tue	12-Oct	H	Bath A	Tue	08-Feb	H	Clifton B
Tue	26-Oct	A	Downend B	Tue	22-Feb	A	Thornbury A
Tue	02-Nov	H	Clevedon A	Tue	01-Mar	H	Downend A
Tue	09-Nov	A	Downend A	Tue	22-Mar	H	Clifton A
Wed	08-Dec	A	Clifton A	Thu	14-Apr	A	South Bristol A
Tue	14-Dec	H	Thornbury A	Tue	19-Apr	H	Downend B

<b>South Bristol A</b>							
Tue	14-Sep	A	Horfield A	Thu	13-Jan	H	Clifton B
Thu	23-Sep	H	Thornbury A	Tue	18-Jan	A	Downend A
Wed	29-Sep	A	Bath A	Tue	01-Feb	A	Downend B
Wed	06-Oct	A	Clifton B	Thu	24-Feb	H	Clifton A
Thu	04-Nov	H	Downend A	Thu	10-Mar	H	Bath A
Wed	10-Nov	A	Clifton A	Tue	22-Mar	A	Thornbury A
Thu	25-Nov	H	Clevedon A	Mon	04-Apr	A	Clevedon A
Thu	16-Dec	H	Downend B	Thu	14-Apr	H	Horfield A

<b>Thornbury A</b>							
Tue	14-Sep	H	Downend A	Wed	12-Jan	A	Clifton A
Thu	23-Sep	A	South Bristol A	Tue	18-Jan	H	Downend B
Tue	28-Sep	H	Clifton A	Tue	25-Jan	H	Bath A
Tue	05-Oct	H	Clevedon A	Mon	07-Feb	A	Clevedon A
Wed	03-Nov	A	Bath A	Tue	22-Feb	H	Horfield A
Tue	09-Nov	H	Clifton B	Tue	22-Mar	H	South Bristol A
Tue	23-Nov	A	Downend B	Tue	12-Apr	A	Downend A
Tue	14-Dec	A	Horfield A	Wed	20-Apr	A	Clifton B

## Division Two

<b>Bath B</b>							
Tue	07-Sep	A	Hanham A	Tue	18-Jan	A	Horfield B
Wed	22-Sep	H	Horfield B	Wed	09-Feb	A	Keynsham A
Tue	05-Oct	A	Horfield C	Wed	16-Feb	H	Clifton C
Wed	13-Oct	H	University A	Tue	22-Feb	A	Yate A
Wed	27-Oct	H	Yate A	Wed	09-Mar	H	Hanham A
Tue	02-Nov	A	Grendel	Wed	16-Mar	H	Grendel
Wed	17-Nov	A	Clifton C	Thu	24-Mar	A	Bath University
Wed	24-Nov	H	Keynsham A	Wed	06-Apr	H	Horfield C
Wed	08-Dec	H	Bath University	Wed	13-Apr	A	University A

<b>Bath University</b>							
Thu	07-Oct	H	Hanham A	Tue	08-Feb	A	Hanham A
Tue	12-Oct	A	Grendel	Thu	24-Feb	H	Grendel
Thu	21-Oct	H	Yate A	Tue	01-Mar	A	Yate A
Tue	02-Nov	A	Horfield C	Thu	10-Mar	H	Horfield C
Thu	11-Nov	H	University A	Wed	16-Mar	A	University A
Thu	18-Nov	H	Horfield B	Thu	24-Mar	H	Bath B
Thu	25-Nov	H	Clifton C	Wed	30-Mar	A	Keynsham A
Wed	08-Dec	A	Bath B	Tue	05-Apr	A	Horfield B
Thu	16-Dec	H	Keynsham A	Wed	13-Apr	A	Clifton C

<b>Clifton C</b>							
Tue	07-Sep	A	Horfield B	Wed	12-Jan	H	Keynsham A
Wed	15-Sep	H	Yate A	Tue	18-Jan	A	Yate A
Wed	22-Sep	A	Keynsham A	Wed	02-Feb	H	University A
Wed	29-Sep	H	Horfield C	Wed	09-Feb	H	Horfield B
Tue	05-Oct	A	Grendel	Wed	16-Feb	A	Bath B
Wed	27-Oct	A	University A	Tue	01-Mar	A	Horfield C
Wed	17-Nov	H	Bath B	Wed	09-Mar	H	Grendel
Thu	25-Nov	A	Bath University	Tue	29-Mar	A	Hanham A
Wed	08-Dec	H	Hanham A	Wed	13-Apr	H	Bath University



<b>Grendel</b>							
Tue	21-Sep	A	Hanham A	Wed	19-Jan	A	University A
Tue	28-Sep	A	Horfield B	Tue	01-Feb	H	Keynsham A
Tue	05-Oct	H	Clifton C	Tue	08-Feb	H	Horfield C
Tue	12-Oct	H	Bath University	Tue	15-Feb	H	Yate A
Tue	02-Nov	H	Bath B	Thu	24-Feb	A	Bath University
Tue	16-Nov	A	Yate A	Wed	09-Mar	A	Clifton C
Tue	30-Nov	H	University A	Wed	16-Mar	A	Bath B
Wed	08-Dec	A	Keynsham A	Tue	29-Mar	H	Horfield B
Tue	14-Dec	A	Horfield C	Tue	12-Apr	H	Hanham A

<b>Hanham A</b>							
Tue	07-Sep	H	Bath B	Tue	04-Jan	H	Horfield B
Tue	14-Sep	A	Horfield C	Tue	11-Jan	A	Yate A
Tue	21-Sep	H	Grendel	Tue	08-Feb	H	Bath University
Thu	07-Oct	A	Bath University	Wed	02-Mar	A	University A
Tue	19-Oct	A	Horfield B	Wed	09-Mar	A	Bath B
Tue	02-Nov	H	University A	Tue	15-Mar	H	Keynsham A
Wed	17-Nov	A	Keynsham A	Tue	29-Mar	H	Clifton C
Wed	08-Dec	A	Clifton C	Tue	12-Apr	A	Grendel
Tue	14-Dec	H	Yate A	Tue	19-Apr	H	Horfield C

<b>Horfield B</b>							
Tue	07-Sep	H	Clifton C	Tue	04-Jan	A	Hanham A
Wed	22-Sep	A	Bath B	Tue	18-Jan	H	Bath B
Tue	28-Sep	H	Grendel	Tue	01-Feb	H	Yate A
Wed	06-Oct	A	University A	Wed	09-Feb	A	Clifton C
Tue	19-Oct	H	Hanham A	Tue	08-Mar	H	University A
Wed	03-Nov	A	Keynsham A	Tue	15-Mar	A	Horfield C
Thu	18-Nov	A	Bath University	Tue	29-Mar	A	Grendel
Tue	23-Nov	A	Yate A	Tue	05-Apr	H	Bath University
Tue	07-Dec	H	Horfield C	Tue	12-Apr	H	Keynsham A

Horfield C						
Tue	14-Sep	H	Hanham A	Wed	19-Jan A	Keynsham A
Tue	21-Sep	A	Yate A	Tue	08-Feb	A Grendel
Wed	29-Sep	A	Clifton C	Tue	01-Mar	H Clifton C
Tue	05-Oct	H	Bath B	Thu	10-Mar	A Bath University
Tue	12-Oct	H	Keynsham A	Tue	15-Mar	H Horfield B
Tue	02-Nov	H	Bath University	Tue	22-Mar	H University A
Wed	17-Nov	A	University A	Wed	06-Apr	A Bath B
Tue	07-Dec	A	Horfield B	Tue	19-Apr	A Hanham A
Tue	14-Dec	H	Grendel	Tue	03-May	H Yate A

Keynsham A						
Tue	07-Sep	A	Yate A	Wed	12-Jan	A Clifton C
Wed	22-Sep	H	Clifton C	Wed	19-Jan	H Horfield C
Tue	12-Oct	A	Horfield C	Tue	01-Feb	A Grendel
Wed	20-Oct	A	University A	Wed	09-Feb	H Bath B
Wed	03-Nov	H	Horfield B	Wed	23-Feb	H University A
Wed	17-Nov	H	Hanham A	Tue	15-Mar	A Hanham A
Wed	24-Nov	A	Bath B	Wed	30-Mar	H Bath University
Wed	08-Dec	H	Grendel	Tue	12-Apr	A Horfield B
Thu	16-Dec	A	Bath University	Wed	20-Apr	H Yate A

University A						
Wed	06-Oct	H	Horfield B	Wed	19-Jan	H Grendel
Wed	13-Oct	A	Bath B	Wed	02-Feb	A Clifton C
Wed	20-Oct	H	Keynsham A	Wed	23-Feb	A Keynsham A
Wed	27-Oct	H	Clifton C	Wed	02-Mar	H Hanham A
Tue	02-Nov	A	Hanham A	Tue	08-Mar	A Horfield B
Thu	11-Nov	A	Bath University	Wed	16-Mar	H Bath University
Wed	17-Nov	H	Horfield C	Tue	22-Mar	A Horfield C
Tue	30-Nov	A	Grendel	Wed	30-Mar	H Yate A
Tue	07-Dec	A	Yate A	Wed	13-Apr	H Bath B

**Yate A**

Tue	07-Sep	H	Keynsham A	Tue	11-Jan	H	Hanham A
Wed	15-Sep	A	Clifton C	Tue	18-Jan	H	Clifton C
Tue	21-Sep	H	Horfield C	Tue	25-Jan	A	Grendel
Thu	21-Oct	A	Bath University	Tue	01-Feb	A	Horfield B
Wed	27-Oct	A	Bath B	Tue	22-Feb	H	Bath B
Tue	23-Nov	H	Horfield B	Tue	01-Mar	H	Bath University
Tue	30-Nov	H	Grendel	Wed	30-Mar	A	University A
Tue	07-Dec	H	University A	Wed	20-Apr	A	Keynsham A
Tue	14-Dec	A	Hanham A	Tue	03-May	A	Horfield C

## Division Three

<b>Cabot</b>							
Tue	07-Sep	A	Downend C	Wed	05-Jan	A	Clifton D
Tue	21-Sep	H	Clifton D	Tue	18-Jan	H	Downend D
Wed	29-Sep	A	Keynsham B	Tue	25-Jan	H	Patchway
Tue	05-Oct	A	Downend D	Thu	24-Feb	A	Harambee A
Tue	12-Oct	H	South Bristol B	Mon	28-Feb	A	Clevedon B
Tue	26-Oct	H	Hanham B	Tue	08-Mar	H	Keynsham B
Thu	11-Nov	A	Patchway	Tue	29-Mar	H	Downend C
Tue	30-Nov	H	Harambee A	Thu	21-Apr	A	South Bristol B
Tue	14-Dec	H	Clevedon B	Tue	03-May	A	Hanham B

<b>Clevedon B</b>							
Mon	06-Sep	H	South Bristol B	Tue	11-Jan	A	Downend C
Wed	15-Sep	A	Keynsham B	Thu	20-Jan	A	South Bristol B
Mon	20-Sep	H	Downend D	Mon	31-Jan	H	Harambee A
Thu	07-Oct	A	Harambee A	Tue	08-Feb	A	Downend D
Mon	18-Oct	H	Downend C	Mon	14-Feb	H	Clifton D
Thu	28-Oct	A	Patchway	Mon	28-Feb	H	Cabot
Wed	24-Nov	A	Clifton D	Mon	21-Mar	H	Patchway
Mon	06-Dec	H	Hanham B	Tue	05-Apr	A	Hanham B
Tue	14-Dec	A	Cabot	Mon	11-Apr	H	Keynsham B

<b>Clifton D</b>							
Wed	08-Sep	H	Patchway	Wed	05-Jan	H	Cabot
Tue	21-Sep	A	Cabot	Thu	10-Feb	A	South Bristol B
Wed	06-Oct	H	Hanham B	Mon	14-Feb	A	Clevedon B
Wed	13-Oct	A	Keynsham B	Wed	02-Mar	H	Downend D
Wed	03-Nov	H	South Bristol B	Tue	08-Mar	A	Hanham B
Thu	18-Nov	A	Harambee A	Wed	30-Mar	H	Harambee A
Wed	24-Nov	H	Clevedon B	Thu	07-Apr	A	Patchway
Tue	07-Dec	A	Downend D	Wed	20-Apr	H	Downend C
Tue	14-Dec	A	Downend C	Wed	04-May	H	Keynsham B

<b>Downend C</b>						
Tue	07-Sep	H	Cabot	Wed	05-Jan	A Keynsham B
Thu	16-Sep	A	Patchway	Tue	11-Jan	H Clevedon B
Tue	21-Sep	H	South Bristol B	Thu	10-Feb	A Harambee A
Tue	12-Oct	A	Downend D	Tue	15-Feb	H Hanham B
Mon	18-Oct	A	Clevedon B	Tue	22-Feb	H Patchway
Tue	02-Nov	H	Harambee A	Thu	03-Mar	A South Bristol B
Tue	16-Nov	H	Keynsham B	Tue	29-Mar	A Cabot
Tue	30-Nov	A	Hanham B	Tue	12-Apr	H Downend D
Tue	14-Dec	H	Clifton D	Wed	20-Apr	A Clifton D

<b>Downend D</b>						
Mon	20-Sep	A	Clevedon B	Tue	04-Jan	H Patchway
Tue	28-Sep	A	Hanham B	Tue	18-Jan	A Cabot
Tue	05-Oct	H	Cabot	Tue	01-Feb	H Hanham B
Tue	12-Oct	H	Downend C	Tue	08-Feb	H Clevedon B
Thu	21-Oct	A	South Bristol B	Wed	02-Mar	A Clifton D
Tue	26-Oct	H	Harambee A	Tue	08-Mar	H South Bristol B
Tue	23-Nov	H	Keynsham B	Wed	06-Apr	A Keynsham B
Thu	02-Dec	A	Patchway	Tue	12-Apr	A Downend C
Tue	07-Dec	H	Clifton D	Thu	21-Apr	A Harambee A

<b>Hanham B</b>						
Wed	08-Sep	A	Keynsham B	Tue	01-Feb	A Downend D
Thu	23-Sep	A	Harambee A	Tue	15-Feb	A Downend C
Tue	28-Sep	H	Downend D	Tue	01-Mar	H Harambee A
Wed	06-Oct	A	Clifton D	Tue	08-Mar	H Clifton D
Tue	12-Oct	H	Patchway	Thu	17-Mar	A Patchway
Tue	26-Oct	A	Cabot	Tue	22-Mar	H Keynsham B
Tue	23-Nov	H	South Bristol B	Thu	31-Mar	A South Bristol B
Tue	30-Nov	H	Downend C	Tue	05-Apr	H Clevedon B
Mon	06-Dec	A	Clevedon B	Tue	26-Apr	H Cabot

<b>Harambee A</b>						
Thu	16-Sep	A	South Bristol B	Thu	06-Jan	H South Bristol B
Thu	23-Sep	H	Hanham B	Thu	13-Jan	A Patchway
Thu	07-Oct	H	Clevedon B	Thu	20-Jan	H Keynsham B
Thu	21-Oct	H	Patchway	Mon	31-Jan	A Clevedon B
Tue	26-Oct	A	Downend D	Thu	10-Feb	H Downend C
Tue	02-Nov	A	Downend C	Thu	24-Feb	H Cabot
Thu	18-Nov	H	Clifton D	Tue	01-Mar	A Hanham B
Tue	30-Nov	A	Cabot	Wed	30-Mar	A Clifton D
Wed	15-Dec	A	Keynsham B	Thu	21-Apr	H Downend D

<b>Keynsham B</b>						
Wed	08-Sep	H	Hanham B	Wed	05-Jan	H Downend C
Wed	15-Sep	H	Clevedon B	Thu	20-Jan	A Harambee A
Wed	29-Sep	H	Cabot	Wed	02-Mar	H Patchway
Thu	07-Oct	A	Patchway	Tue	08-Mar	A Cabot
Wed	13-Oct	H	Clifton D	Wed	16-Mar	H South Bristol B
Thu	28-Oct	A	South Bristol B	Tue	22-Mar	A Hanham B
Tue	16-Nov	A	Downend C	Wed	06-Apr	H Downend D
Tue	23-Nov	A	Downend D	Mon	11-Apr	A Clevedon B
Wed	15-Dec	H	Harambee A	Wed	04-May	A Clifton D

<b>Patchway</b>						
Wed	08-Sep	A	Clifton D	Tue	04-Jan	A Downend D
Thu	16-Sep	H	Downend C	Thu	13-Jan	H Harambee A
Thu	07-Oct	H	Keynsham B	Tue	25-Jan	A Cabot
Tue	12-Oct	A	Hanham B	Thu	03-Feb	H South Bristol B
Thu	21-Oct	A	Harambee A	Tue	22-Feb	A Downend C
Thu	28-Oct	H	Clevedon B	Wed	02-Mar	A Keynsham B
Thu	11-Nov	H	Cabot	Thu	17-Mar	H Hanham B
Thu	18-Nov	A	South Bristol B	Mon	21-Mar	A Clevedon B
Thu	02-Dec	H	Downend D	Thu	07-Apr	H Clifton D

**South Bristol B**

Mon	06-Sep	A	Clevedon B	Thu	06-Jan	A	Harambee A
Thu	16-Sep	H	Harambee A	Thu	20-Jan	H	Clevedon B
Tue	21-Sep	A	Downend C	Thu	03-Feb	A	Patchway
Tue	12-Oct	A	Cabot	Thu	10-Feb	H	Clifton D
Thu	21-Oct	H	Downend D	Thu	03-Mar	H	Downend C
Thu	28-Oct	H	Keynsham B	Tue	08-Mar	A	Downend D
Wed	03-Nov	A	Clifton D	Wed	16-Mar	A	Keynsham B
Thu	18-Nov	H	Patchway	Thu	31-Mar	H	Hanham B
Tue	23-Nov	A	Hanham B	Thu	21-Apr	H	Cabot

## Division Four

<b>Downend E</b>							
Tue	07-Sep	A	Thornbury B	Thu	13-Jan	A	South Bristol C
Tue	14-Sep	H	South Bristol C	Wed	19-Jan	A	UWE
Tue	21-Sep	H	Nailsea	Mon	31-Jan	A	Petes Potentials
Tue	28-Sep	A	Hanham C	Tue	15-Feb	H	Horfield D
Tue	19-Oct	H	UWE	Tue	22-Feb	H	Downend F
Thu	28-Oct	A	Harambee B	Wed	09-Mar	A	University B
Tue	02-Nov	H	Yate B	Tue	15-Mar	H	Thornbury B
Tue	09-Nov	A	Horfield D	Tue	22-Mar	A	Yate B
Tue	16-Nov	H	University B	Tue	29-Mar	H	Hanham C
Tue	30-Nov	H	Petes Potentials	Tue	05-Apr	H	Harambee B
Tue	14-Dec	A	Downend F	Mon	11-Apr	A	Nailsea

<b>Downend F</b>							
Tue	07-Sep	A	Hanham C	Tue	04-Jan	H	Nailsea
Thu	23-Sep	A	South Bristol C	Tue	11-Jan	H	Hanham C
Tue	28-Sep	H	Horfield D	Tue	18-Jan	A	Horfield D
Tue	05-Oct	H	University B	Tue	01-Feb	H	Thornbury B
Mon	11-Oct	A	Petes Potentials	Wed	09-Feb	A	University B
Tue	19-Oct	A	Thornbury B	Wed	14-Feb	A	UWE
Tue	26-Oct	H	UWE	Tue	22-Feb	A	Downend E
Thu	04-Nov	A	Harambee B	Tue	08-Mar	H	Yate B
Mon	15-Nov	A	Nailsea	Tue	15-Mar	H	South Bristol C
Tue	07-Dec	A	Yate B	Tue	12-Apr	H	Petes Potentials
Tue	14-Dec	H	Downend E	Tue	19-Apr	H	Harambee B



**Hanham C**

Tue	07-Sep	H	Downend F	Tue	04-Jan	A	Yate B
Tue	28-Sep	H	Downend E	Tue	11-Jan	A	Downend F
Tue	05-Oct	H	Yate B	Tue	18-Jan	H	Harambee B
Thu	14-Oct	A	South Bristol C	Tue	01-Feb	H	University B
Wed	20-Oct	A	University B	Mon	14-Feb	A	Nailsea
Tue	26-Oct	H	Petes Potentials	Tue	22-Feb	H	South Bristol C
Wed	03-Nov	A	UWE	Mon	07-Mar	A	Petes Potentials
Tue	16-Nov	A	Thornbury B	Tue	15-Mar	H	UWE
Tue	23-Nov	H	Horfield D	Tue	29-Mar	A	Downend E
Tue	30-Nov	H	Nailsea	Tue	05-Apr	H	Thornbury B
Thu	16-Dec	A	Harambee B	Tue	12-Apr	A	Horfield D

**Harambee B**

Thu	09-Sep	H	Yate B	Tue	18-Jan	A	Hanham C
Tue	14-Sep	A	Horfield D	Thu	27-Jan	H	Thornbury B
Tue	21-Sep	A	Thornbury B	Tue	08-Feb	A	Yate B
Thu	30-Sep	H	Nailsea	Thu	17-Feb	A	South Bristol C
Thu	28-Oct	H	Downend E	Thu	03-Mar	H	Horfield D
Thu	04-Nov	H	Downend F	Thu	17-Mar	H	University B
Mon	08-Nov	A	Petes Potentials	Mon	21-Mar	A	Nailsea
Wed	17-Nov	A	UWE	Thu	31-Mar	H	UWE
Wed	01-Dec	A	University B	Tue	05-Apr	A	Downend E
Thu	09-Dec	H	South Bristol C	Tue	19-Apr	A	Downend F
Thu	16-Dec	H	Hanham C	Thu	28-Apr	H	Petes Potentials

**Horfield D**

Tue	14-Sep	H	Harambee B	Tue	04-Jan	H	Petes Potentials
Tue	28-Sep	A	Downend F	Tue	18-Jan	H	Downend F
Mon	11-Oct	A	Nailsea	Tue	01-Feb	H	Yate B
Tue	19-Oct	A	Yate B	Tue	15-Feb	A	Downend E
Tue	26-Oct	H	Thornbury B	Tue	22-Feb	H	University B
Wed	03-Nov	A	University B	Thu	03-Mar	A	Harambee B
Tue	09-Nov	H	Downend E	Tue	08-Mar	A	Thornbury B
Tue	16-Nov	H	South Bristol C	Wed	23-Mar	A	UWE
Tue	23-Nov	A	Hanham C	Tue	29-Mar	H	Nailsea
Tue	30-Nov	H	UWE	Thu	07-Apr	A	South Bristol C
Mon	13-Dec	A	Petes Potentials	Tue	12-Apr	H	Hanham C

**Nailsea**

Thu	09-Sep	A	South Bristol C	Tue	04-Jan	A	Downend F
Tue	21-Sep	A	Downend E	Mon	17-Jan	H	South Bristol C
Thu	30-Sep	A	Harambee B	Wed	26-Jan	A	University B
Mon	11-Oct	H	Horfield D	Wed	02-Feb	A	UWE
Mon	18-Oct	H	Petes Potentials	Mon	14-Feb	H	Hanham C
Mon	25-Oct	H	University B	Mon	21-Feb	H	Thornbury B
Tue	02-Nov	A	Thornbury B	Mon	28-Feb	A	Petes Potentials
Mon	08-Nov	H	UWE	Mon	21-Mar	H	Harambee B
Mon	15-Nov	H	Downend F	Tue	29-Mar	A	Horfield D
Mon	22-Nov	H	Yate B	Mon	11-Apr	H	Downend E
Tue	30-Nov	A	Hanham C	Tue	19-Apr	A	Yate B

### Petes Potentials

Mon	20-Sep	H	Yate B	Tue	04-Jan	A	Horfield D
Wed	29-Sep	A	University B	Mon	17-Jan	H	University B
Mon	11-Oct	H	Downend F	Mon	24-Jan	H	UWE
Mon	18-Oct	A	Nailsea	Mon	31-Jan	H	Downend E
Tue	26-Oct	A	Hanham C	Mon	07-Feb	H	South Bristol C
Thu	04-Nov	A	South Bristol C	Mon	28-Feb	H	Nailsea
Mon	08-Nov	H	Harambee B	Mon	07-Mar	H	Hanham C
Wed	24-Nov	A	UWE	Tue	29-Mar	A	Yate B
Tue	30-Nov	A	Downend E	Tue	12-Apr	A	Downend F
Mon	07-Dec	H	Thornbury B	Tue	19-Apr	A	Thornbury B
Mon	13-Dec	H	Horfield D	Thu	28-Apr	A	Harambee B

### South Bristol C

Thu	09-Sep	H	Nailsea	Thu	13-Jan	H	Downend E
Tue	14-Sep	A	Downend E	Mon	17-Jan	A	Nailsea
Thu	23-Sep	H	Downend F	Mon	07-Feb	A	Petes Potentials
Wed	06-Oct	A	UWE	Thu	17-Feb	H	Harambee B
Thu	14-Oct	H	Hanham C	Tue	22-Feb	A	Hanham C
Thu	04-Nov	H	Petes Potentials	Tue	01-Mar	A	Thornbury B
Tue	16-Nov	A	Horfield D	Thu	10-Mar	H	UWE
Thu	25-Nov	H	University B	Tue	15-Mar	A	Downend F
Tue	30-Nov	A	Yate B	Wed	23-Mar	A	University B
Thu	09-Dec	A	Harambee B	Thu	07-Apr	H	Horfield D
Thu	16-Dec	H	Thornbury B	Thu	14-Apr	H	Yate B

**Thornbury B**

Tue	07-Sep	H	Downend E	Tue	11-Jan	H	Yate B
Tue	14-Sep	A	Yate B	Thu	27-Jan	A	Harambee B
Tue	21-Sep	H	Harambee B	Tue	01-Feb	A	Downend F
Wed	13-Oct	A	UWE	Tue	08-Feb	H	UWE
Tue	19-Oct	H	Downend F	Mon	21-Feb	A	Nailsea
Tue	26-Oct	A	Horfield D	Tue	01-Mar	H	South Bristol C
Tue	02-Nov	H	Nailsea	Tue	08-Mar	H	Horfield D
Wed	10-Nov	A	University B	Tue	15-Mar	A	Downend E
Tue	16-Nov	H	Hanham C	Tue	29-Mar	H	University B
Mon	07-Dec	A	Petes Potentials	Tue	05-Apr	A	Hanham C
Thu	16-Dec	A	South Bristol C	Tue	19-Apr	H	Petes Potentials

**University B**

Wed	29-Sep	H	Petes Potentials	Mon	17-Jan	A	Petes Potentials
Tue	05-Oct	A	Downend F	Wed	26-Jan	H	Nailsea
Tue	12-Oct	A	Yate B	Tue	01-Feb	A	Hanham C
Wed	20-Oct	H	Hanham C	Wed	09-Feb	H	Downend F
Mon	25-Oct	A	Nailsea	Wed	16-Feb	H	Yate B
Wed	03-Nov	H	Horfield D	Tue	22-Feb	A	Horfield D
Wed	10-Nov	H	Thornbury B	Wed	02-Mar	A	UWE
Tue	16-Nov	A	Downend E	Wed	09-Mar	H	Downend E
Thu	25-Nov	A	South Bristol C	Thu	17-Mar	A	Harambee B
Wed	01-Dec	H	Harambee B	Wed	23-Mar	H	South Bristol C
Wed	08-Dec	H	UWE	Tue	29-Mar	A	Thornbury B

UWE						
Tue	28-Sep	A	Yate B	Wed	19-Jan	H Downend E
Wed	06-Oct	H	South Bristol C	Mon	24-Jan	A Petes Potentials
Wed	13-Oct	H	Thornbury B	Wed	02-Feb	H Nailsea
Tue	19-Oct	A	Downend E	Tue	08-Feb	A Thornbury B
Tue	26-Oct	A	Downend F	Wed	16-Feb	H Downend F
Wed	03-Nov	H	Hanham C	Wed	02-Mar	H University B
Mon	08-Nov	A	Nailsea	Thu	10-Mar	A South Bristol C
Wed	17-Nov	H	Harambee B	Tue	15-Mar	A Hanham C
Wed	24-Nov	H	Petes Potentials	Wed	23-Mar	H Horfield D
Tue	30-Nov	A	Horfield D	Thu	31-Mar	A Harambee B
Wed	08-Dec	A	University B	Wed	06-Apr	H Yate B

Yate B						
Thu	09-Sep	A	Harambee B	Tue	04-Jan	H Hanham C
Tue	14-Sep	H	Thornbury B	Tue	11-Jan	A Thornbury B
Mon	20-Sep	A	Petes Potentials	Tue	01-Feb	A Horfield D
Tue	28-Sep	H	UWE	Tue	08-Feb	H Harambee B
Tue	05-Oct	A	Hanham C	Wed	16-Feb	A University B
Tue	12-Oct	H	University B	Tue	08-Mar	A Downend F
Tue	19-Oct	H	Horfield D	Tue	22-Mar	H Downend E
Tue	02-Nov	A	Downend E	Tue	29-Mar	H Petes Potentials
Mon	22-Nov	A	Nailsea	Wed	06-Apr	A UWE
Tue	30-Nov	H	South Bristol C	Thu	14-Apr	A South Bristol C
Tue	07-Dec	H	Downend F	Tue	19-Apr	H Nailsea

# **The Constitution and Rules of the Bristol & District Chess League**

(revised 28 Jul 2010)

## **THE CONSTITUTION**

### **A. THE LEAGUE**

### **B. GENERAL MEETINGS**

### **C. WINDING UP OF THE LEAGUE**

## **THE RULES**

### **1. MEMBERSHIP**

### **2. MANAGEMENT**

### **3. GENERAL RULES OF TEAM COMPETITIONS**

### **4. UNFINISHED GAMES**

### **5. QUICKPLAY FINISHES**

### **6. TEAM CHAMPIONSHIPS**

### **7. TEAM KNOCK-OUT**

### **8. MINOR TEAM KNOCK-OUT**

### **9. OTHER COMPETITIONS**

### **10. ECF GAME FEE.**

## **THE CONSTITUTION**

### **A. THE LEAGUE**

A.1. This is the Constitution and Rules of a voluntary association known as “The Bristol and District Chess League” (“the League”).

A.2. The objectives of the League shall be to:

- Promote interest in and to encourage the study and practice of chess;
- give advice on all chess matters;
- organize and carry out championships and competitions between clubs and individual players in membership of the League.

A.3. The affairs of the League shall be governed by this Constitution and Rules, as managed and administered by a League Management Committee (“the LMC”).

A.4. The affairs of the League shall be conducted by its Officers, who are required to:

- transact the business of the League in the best interest of the League, and according to the wishes of the LMC;
- maintain appropriate records and accounts of all their transactions on behalf of the League for an appropriate period of time, and, whenever required to do so by the LMC, produce these records and provide a full and clear account of their activities;

- hand over promptly to the Treasurer all money received by them on behalf of the League;
- protect any League property in their care, and hand it over to the LMC when required to do so.

## **B GENERAL MEETINGS**

- B.1. A General Meeting may be called at any time by the LMC or by the written request of the secretaries of three Member Clubs delivered to the LMC. The LMC shall give at least fourteen days notice of any General Meeting by way of an Agenda for the Meeting circulated to the secretaries of all Member Clubs. The Agenda shall give the Motions and state the Elections on which the General Meeting shall vote.
- B.2. Motions may be proposed either by any Individual Member of the League ("Member"), in which case it must be seconded by another Member, or by the LMC. Only those Motions published in the Agenda may be debated at a General Meeting.
- B.3. The LMC shall nominate a Chairman for each General Meeting.
- B.4. A quorum of twenty Members must be present when any vote is taken at a General Meeting. Only Members may vote, and voting shall be by show of hands.
- B.5. An Election of a League Officer shall be conducted by Transferable Voting. A vote shall be taken for each of the declared candidates. If any candidate receives more than half of the votes cast, they are elected. Otherwise, a candidate receiving the lowest vote shall be eliminated from the ballot. The process is then repeated. Any unresolved tie shall be decided by lot.
- B.6. Any Member may propose an amendment to any Motion as published, so long as that amendment is entirely concerned with the substance of the original Motion. The Proposer and Secunder, or the LMC, may accept an amendment to their own motion without a vote. Otherwise, an amendment shall be accepted if it is approved by more than half of those voting.
- B.7. Any Motion to alter or amend the Constitution of the League ("Constitutional Change") requires approval by at least two-thirds of those voting, and must then be ratified, by at least two-thirds of the Members voting at a General Meeting held not less than one month and not more than eighteen months thereafter, before the Motion comes into effect.
- B.8. Any Motion to alter or amend the Rules of the League ("Rule Change") requires approval by at least two-thirds of those voting.

B.9. Any other Motion requires approval by more than half of those voting.

## **C WINDING UP OF THE LEAGUE**

C.1. A Motion to wind up the League is a Constitutional Change.

C.2. If ratified, the LMC shall, thereupon, proceed to realize the assets of the League and, after the discharge of liability, shall divide any balance remaining among those Member Clubs at the date of the first approval of the Motion whose subscriptions were then fully paid up, in proportion to the last annual subscriptions paid to the League by such clubs.

## **THE RULES**

### **1. MEMBERSHIP**

#### **1.1 General**

All memberships of the League are subject to the approval of the LMC.

#### **1.2 Member Clubs.**

- a. All chess clubs in Bristol and the surrounding district (as determined by the LMC) are eligible to be Member Clubs.
- b. The subscription to the League for a Member Club for the year from September to the following August shall be £39 per team (for teams in divisions 1, 2 and 3) or £26 per team (for teams in all other divisions) entered in the Team Championship. The subscription is payable by 30th November. The LMC may fine the club up to £5 per team for each month or part thereof by which the payment is late.
- c. Each Member Club shall also pay ECF Game Fees to the League as specified in Rule 10.
- d. All subscriptions, fees and fines are payable to the League Treasurer within one month of receipt of a request for payment from the Treasurer.
- e. The secretary of each Member Club shall receive two copies of these rules each year.

**1.3 Individual Membership** All bona fide members of Member Clubs are automatically Individual Members of the League (“Members”), and are not required to pay any fees.

#### **1.4 Affiliated Membership**

Any organization is eligible to be an Affiliated Member of the League (“Affiliate”). An Affiliate is not required to pay any fees. An Affiliate may nominate two representatives who will have the rights of Members in respect of General Meetings.



**1.5 External Affiliations** The League shall affiliate to the West of England Chess Union, and shall support the ECF as a registered Game Fee event (Rule 10).

## **2 MANAGEMENT**

### **2.1 Organization of the League Management Committee**

- a. The LMC shall consist of the following League Officers: President, Vice-President, Chairman, General Secretary, Match Secretary, Treasurer, Congress Secretary, ECF Representative, Grand Prix Secretary, Junior Organizer, Recruitment and Publicity Officer, Webmaster, and 4NCL Team Manager (“the LMC posts”).
- b. No person may hold more than one of the following LMC posts at the same time: President, Vice-President, Chairman, General Secretary, Match Secretary, and Treasurer.
- c. The LMC may from time to time appoint or terminate the appointment of a Trophy Secretary, a Minutes Secretary, and/or such other League Officers (excluding the LMC posts and the Auditor) as it sees fit.
- d. Meetings of the LMC shall normally be organized by the General Secretary. As well as the other LMC members, he shall invite to any meeting any League Officer or other person who shall be able to assist the workings of the LMC, or who has reasonable cause to be represented before the LMC. Any such person shall have speaking rights but not voting rights at the meeting.
- e. Five members of the LMC shall form a quorum for a meeting of the LMC. The Chairman, or in his absence the President, shall preside.

### **2.2 General Powers of the League Management Committee**

- a. In the case of any infringement of these Rules by a Member Club, the LMC may impose an appropriate penalty, which may comprise a fine not exceeding £25, a deduction of points in the Team Championships, or the disqualification of a team or teams from one or more competitions. Such a penalty shall take account of the gravity of the infringement, and where appropriate due warning of an infringement shall be given to the Member Club prior to the imposition of any penalty.
- b. Any protest or dispute, or any matter arising not provided for in these rules, shall be referred to the LMC whose decision thereon shall be final.
- c. The LMC may at any time replace any League Officer who ceases to act.
- d. The LMC may at any time act to fill any LMC post which has become vacant for any reason.

### **2.3 The General Secretary**

- a. The General Secretary shall be the primary external contact for the League, and represent the League on all bodies to which the League is entitled representation, including the WECU Executive.
- b. The General Secretary shall summon and give due notice of all General Meetings of the League and meetings of the LMC, and maintain records thereof.
- c. The General Secretary shall receive an honorarium of £50 as long as he continues to act in that capacity.

### **2.4 The Match Secretary**

- a. The Match Secretary shall be responsible for the day-to-day running of the League's fixtures and competitions.
- b. The Match Secretary shall ensure that the secretary of each Member Club has a copy of the latest League tables at least once each month of the Team Championship season.
- c. The Match Secretary shall receive an honorarium of £50 as long as he continues to act in that capacity.

### **2.5 The Treasurer**

- a. The Treasurer shall receive and take charge of the funds of the League and pay all accounts approved by the Chairman or by the LMC.
- b. The Treasurer shall complete an Annual Account and Balance Sheet up to and including 30th April each year. These shall be certified by the Treasurer and the General Secretary and duly audited.

### **2.6 Annual General Meetings**

The Annual General Meeting of the League ("the AGM") shall be held in May or June on a date to be fixed by the LMC. At the AGM: - reports and accounts shall be rendered by the General Secretary, the Match Secretary and the Treasurer, and, at the discretion of the LMC, by any other League Officer; there will be an election of officers for the LMC posts; there will be an election for the post of Auditor. No person may hold this post at the same time as he holds an LMC post.

### **2.7 Voting at General Meetings**

At any General Meeting including the AGM, any member present may at any time before or during a vote on a Motion, where the Motion affects the playing conditions, rules, format, eligibility or any other aspect of a chess match, request that a separate vote be taken for that Motion for each division and/or competition, or for specific divisions and/or competitions. If such a request is made, the question shall be put to the vote as a procedural motion and, if approved by more than half of those

voting, separate votes shall be taken on the substantive Motion as specified in the request.

### **3 GENERAL RULES OF TEAM COMPETITIONS**

#### **3.1 General**

- a. The LMC shall organize and promote the team competitions described in these rules. It shall provide a trophy for each competition, engraved with the winning particulars.
- b. A representative of the winner of any competition may accept the custody of the relevant League trophy for a limited period. Any person accepting custody must: -
  - sign a declaration provided by the Treasurer to the effect that the person shall give all due diligence to providing safe custody for the trophy, and accept any conditions of custody imposed by the LMC or its insurers;
  - provide the Treasurer with a permanent address at which the trophy shall be kept, and any changes in that address during the period of custody; immediately notify the Treasurer in the event of any loss or damage to the trophy, providing all the necessary information for any insurance claim to be completed;
  - return the trophy to the Treasurer on demand.

#### **3.2 Rules of Play**

- a. All games shall be played in accordance with the latest Laws of Chess published by FIDE [currently July 2009]. A link to the Laws shall be provided on the League website.
- b. Games may be recorded in either algebraic or English descriptive notation, but the use of algebraic notation shall be encouraged by the League.
- c. All team competitions shall be played without an arbiter. Team captains shall not be considered to be acting as arbiters.
- d. Games requiring all moves to be completed in 60 minutes or less shall be subject to the FIDE Laws of Rapidplay. Games requiring all moves to be completed in 61 minutes or more shall be subject to the standard FIDE Laws.
- e. Any player who:
  - permits a mobile phone to be visible in the playing area; or
  - permits a mobile phone to be audible in the playing area; or
  - makes, sends or responds to a mobile phone call or SMS message in the playing area shall lose the game. A player who is obliged by circumstances to have his mobile phone activated in the playing area (e.g. doctor on call) must inform both team captains in advance.

- f. The LMC may make additional match bylaws which shall be circulated by the Match Secretary and/or made available on the League website.

### **3.3 Rates of Play**

- a. All games shall be played with specified rates of play regulated by the use of a chess clock.
- b. The LMC may modify the rates of play and playing sessions imposed by these rules if exceptional circumstances should require this.
- c. When a second or subsequent time limit is not a whole number of hours, the clocks should be stopped immediately on completion of the previous time limit, and both clocks wound back by the period of the next time limit. (For example, if the first time limit is 42 moves in 1<sup>3</sup>/<sub>4</sub> hours and the second time limit is 6 moves in <sup>1</sup>/<sub>4</sub> hour, then after Black's 42nd move, both clocks should be wound back by 15 minutes.)

### **3.4 Fixtures**

- a. Before the start of the season, the Match Secretary shall determine and publish a list of fixtures for the season. This list shall be issued free to clubs in the ration of 7 per team entered in the Team Championship, additional copies being available from the Match Secretary at 20p each plus any postage. Additional fixtures may be determined by the Match Secretary during the season.
- b. Any fixture determined by the Match Secretary may be rescheduled at the direction of the LMC. Such a fixture may also be rescheduled by the explicit approval of the Match Secretary in advance together with the agreement of the opposing team captains, providing that the rescheduled match takes place within the published duration of the competition, and that the Match Secretary is informed of the rescheduled date by the home captain within 30 days of the postponement.

### **3.5 Eligibility of Players**

Only Members may compete in League team competitions.  
Additional eligibility rules may apply in each competition.

### **3.6 Match Preliminaries**

The following preliminaries should be carried out before the start of the play:

- a. The home team shall be responsible for providing, for each game, the following equipment in usable order: a chess set and board, a chess clock, two scoresheets, a table and two chairs.

- b. Each team shall present a captain. The captains shall first agree any variations in the conditions of play permitted by the competition. Then they shall exchange lists of eligible players in order of decreasing playing strength, the strongest player being designated board one, the next board two and so on (the LMC may penalize any team that flagrantly abuses this stipulation). The away team shall have White on the odd boards and Black on the even boards.
- c. If after these preliminaries the advertised or agreed start time for the playing session has been passed, then the delay shall be debited from all the clocks of the team causing the delay, and the clocks then started for the White players. Otherwise, the clocks shall be started for the White players at the start of the advertised or agreed playing session.

### **3.7 Default of Game**

During the period of grace defined for each competition, captains may substitute an eligible reserve in place of a player failing to keep their appointment. Any board on which a captain is unable to field an eligible player within the period of grace shall be lost by default; in addition, if an ineligible player is fielded, the LMC may impose a penalty as set out in Rule 2.2.a.

### **3.8 Scoring**

- a. Individual games shall be scored one point for a win, half a point for a draw and no points for a loss. These points are then aggregated, and the team with the higher aggregate score shall win the match; if the scores are equal, the match is tied.
- b. If a team match tie is to be broken by board count, this is calculated by aggregating one point for a win on board one, two points for a win on board two and so on down to the last board, the team with the lower board count winning the match.
- c. If a team match tie is to be broken by board elimination, the winner is determined by disregarding as many of the lowest boards as necessary to secure a result.

### **3.9 Notification of Results**

The home team captain must complete, fully and legibly, a Match Result form as supplied by the Match Secretary, and ensure that the Match Secretary receives it within 72 hours of completion (unless delay under rule 4.2.b is invoked). The LMC may impose a fine of £2 for any unreasonable delay in forwarding the result of the match.

## 4 UNFINISHED GAMES

### 4.1 General

Any game unfinished at the end of a playing session under the alternative rate of play shall be resolved by continuation.

- a. In any game unfinished at the end of a playing session for which the competition rules permit, the player to move at the end of the playing session should first seal a continuation move and give custody of it to his opponent before stopping the clocks, regardless of whether he or his opponent wish to continue. The game shall be continued at the away player's Bristol League club premises, but the venue for any continuation may be varied by mutual agreement at any time.
- b. Players should decide the continuation date on the night of the match. Failing that they must each take steps to arrange a date at the earliest possible opportunity. If a player makes insufficient co-operation in setting a date, the LMC may decide the result of the game.
- c. Any game that is unfinished by the weekend before the AGM shall be declared void, unless there are reasonable grounds for the delay.

## 5 QUICKPLAY FINISHES

**5.1 Rules of Play** Quickplay finishes shall be played without an arbiter and shall be subject to the latest FIDE Laws of Chess, particularly those Laws which refer specifically to games played with quickplay finishes.

**5.2 Claiming a Draw** Draw claims under FIDE Law Appendice D1 shall be submitted to the Match Secretary who shall where necessary consult an arbiter. Any unresolved claims shall be dealt with by the LMC, whose decision, having regard to the opinions of the arbiter shall be final. If at any stage the draw claim is withdrawn or rejected, the claimant shall lose the game; if the claim is rejected, the club of the claimant shall also be fined £3. If the claim is successful, the club of the claimant's opponent shall be fined £3.

<http://www.fide.com/fide/handbook.html?id=125&view=article> gives a fuller explanation of how and under what circumstances to make a claim.

## 6. TEAM CHAMPIONSHIPS

### 6.1 Format

- a. Team Championships shall be held from September 1st to April 30th each year.
- b. Each Team Championship shall consist of a division of teams determined by promotion and relegation from the previous season. The most senior division shall be the first division, the next most senior the second division and so on.

- c. In each division, each team shall play every other team in the division twice, once at home and once away. The LMC may revise these conditions if the number of teams engaged makes this desirable.
- d. In divisions 1, 2 and 3 each match shall be between two teams of six players. In all other divisions each match shall be between two teams of four players.

A team shall score two Match Points for a match won, one Match Point for a match tied and no Match Points for a match lost.

e. At the end of the season, the teams in each division shall be placed in order of decreasing number of Match Points aggregated. If the two or more teams have the same number of Match Points, then the following tie-breaks shall be used in this order:

- greatest number of individual game points aggregated in all matches;
- fewest number of Default Penalty Points (see Rule 6.6);
- greatest number of individual game points aggregated in the matches between the tied teams.
- If still tied, the teams shall be in a tied position.

f. In all but the first division, the two teams placed highest in the division at the end of a season shall be promoted to the next more senior division in place of the two teams placed lowest in that division, who shall be relegated to the less senior division. The LMC shall have the power to promote additional teams and to waive relegations.

## **6.2 Entry**

Entry to the Team Championships is open to any Member Club whose League subscriptions are fully paid up. A club may enter more than one team, in which case the teams shall be designated "A", "B", "C" and so on, in decreasing order of seniority. Entries shall be delivered to the Match Secretary on or before July 1st prior to the start of the season.

## **6.3 Eligibility of Players**

- a. For each team entered in the Team Championships, the Secretary of the Member Club must provide the Match Secretary with a list of at least six bona fide members (in the case of divisions 1, 2 and 3) or at least four bona fide members (in the case of other divisions) of the club to be registered for that team, at least two clear days before that club's first match of the season. It must be the intention that these players shall play regularly for the team for which they are registered, and players should be registered in order of strength as far as is practicable.
- b. Additional players will be registered for an appropriate team following the inclusion of their names on any Match Result form.

- c. A player may not normally play in the Team Championships for more than one club during a given season. The LMC may allow this under exceptional circumstances.
- d. The LMC shall have the power to veto or cancel registration of a player without disclosing their reason for doing so.
- e. For each match in the Team Championships, the club must field a team consisting solely of players registered for that team or for another team from the same club. A player may be registered for only one team at any time.
- f. The Match Secretary shall publish at the start of each season a set of Grading Thresholds for each division.
- g. Players may play for any lower team to that for which they are registered (e.g. "A" team player representing "B" team) if their ECF grade is below the Grading Threshold of the division in which that team plays, except where Rule 6.3.h applies. Additionally, players may play for lower teams in that same division if their ECF grade is below the Grading Threshold of the division below that in which those teams play.
- h. A player may play for a less senior team in the same division as that for which he is registered if he has an ECF grade which is below the Grading Threshold for the division immediately below.

#### **6.4 Playing Sessions & Rates of Play**

- a. The playing session shall not be on a Friday, Saturday, or Sunday, except with the express advance permission of the LMC.
- b. In divisions 1, 2, 3 and 4 the playing session shall be from 7.30pm until 10.30pm. In all other divisions the playing session shall be from 7.30pm until 9.40pm. In all divisions, the period of grace before default of game ends at 8pm.
- c. The standard rates of play shall be as follows: In division 1, 2, 3 and 4 all moves shall be completed in 1½ hours and quickplay finishes (Rule 5) shall apply. In all other divisions all moves shall be completed in 65 minutes and quickplay finishes shall apply.
- d. Players on any single board may agree before the start of the game to use the alternative rate of play applicable to that division. Games played using the alternative rates of play shall be designated as such on the team scoresheet before the start of the match by a means specified to clubs by the Match Secretary. In division 1 the alternative rate of play shall be 36 moves in 1½ hours followed by 24 moves in every hour. The alternative rate of play in divisions 2, 3 and 4 shall be 42 moves in 1½ hours followed by 6 moves every ¼ hour. In all other



divisions the alternative rate of play shall be 32 moves in 65 minutes followed by 6 moves every  $\frac{1}{4}$  hour.

In any agreed continuation session all moves shall be completed in  $1\frac{1}{2}$  hours and quickplay finishes (Rule 5) shall apply.

- e. If at the start of the match only one player is present on a particular board, then that player shall have the right to nominate the rate of play for that board, being either the standard rate of play applicable to the division as specified in Rule 6.4.c or the alternative rate of play applicable to the division as specified in Rule 6.4.d. If at the start of the game neither player is present on a particular board then Rule 6.4.c shall apply.

## **6.5 Default of Games**

- a. For each game defaulted in a Team Championship match in divisions 1, 2 and 3, Default Penalty Points (“DPPs”) shall be automatically imposed on the team defaulting, at the rate of 6 DPPs for a default on board 1, 5 DPPs for a default on board 2 and so on, reducing to 1 DPP on board 6.
- b. For each game defaulted in a Team Championship match in divisions 4 and below, Default Penalty Points (“DPPs”) shall be automatically imposed on the team defaulting, at the rate of 4 DPPs for a default on board 1, 3 DPPs for a default on board 2, 2 DPPs for a default on board 3, and 1 DPP for a default on board 4.
- c. A club may appeal against the imposition of DPPs, and the LMC can use its discretion in considering the appeal. The appeal must reach the Match Secretary within fourteen days of the match date. The LMC will normally waive DPPs if the club can show that 48 hours’ notice of intention to default was given.
- d. In divisions 1, 2 and 3, for each ten DPPs accumulated in one season, one Match Point shall be deducted from the team's total and the club shall be fined £1. If a team exceeds 45 DPPs during the season, it shall be required to resign from the Team Championships.
- e. In divisions 4 and below, for each five DPPs accumulated in one season, one Match Point shall be deducted from the team's total and the club shall be fined £1. If a team exceeds 22 DPPs during the season, it shall be required to resign from the Team Championships.

## **6.6 Resignation or Dismissal of Team**

- a. If a team resigns or is dismissed from the Team Championships, the entire record of that team shall be deleted from the Team Championship records.
- b. If a club cannot meet the obligations of all of its teams in the Team Championships, the LMC may decide which team is to be withdrawn.

## **7. TEAM KNOCK-OUT**

### **7.1 Format**

- a. A Team Knock-Out competition shall be held from September 1st to April 30th each year.
- b. The fixtures for each round shall be determined by a draw made by the LMC and communicated to the club secretaries by the Match Secretary. The team drawn first in each fixture shall play at home.
- c. Each match shall be between two teams of eight players, and shall be played on a knock-out basis. If the match is tied, board count will be used to break the tie. If this fails to resolve the tie, board elimination will apply. If the match is still tied, the match shall be replayed at the away team's premises.

### **7.2 Entry**

Entry to the Team Knock-Out is open to any Member Club whose League subscriptions are fully paid up. A club may enter only one team. Entries to the Team Knock-Out shall be delivered to the Match Secretary on or before July 1st prior to the start of the season. There is no fee.

### **7.3 Eligibility of Players**

A player may play for only one team in the Team Knock-Out in any one season.

### **7.4 Playing Sessions, Rates of Play & Unfinished Games**

These are as for matches using the standard rate of play (Rule 6.4.c) in division 1 of the Team Championships. Rules 6.4.d and 6.4.e shall not apply.

## **8 MINOR TEAM KNOCK-OUT**

### **8.1 Format**

- a. A Minor Team Knock-Out competition shall be held between September 1st and April 30th each season.
- b. Each match shall be between two teams of six players. The format shall otherwise be as for the Team Knock-Out.

### **8.2 Entry**

- a. A club may enter one or more teams, but no player may play for more than one team during any one season's competition.
- b. The rules for entry are otherwise as for the Team Knock-Out.

### **8.3 Team Eligibility**

- a. No team may be fielded in any match whose mean (average) ECF grade shall exceed 135.
- b. Where a player has no ECF grade, his ECF grade shall be deemed to be 135 for the purposes of determining eligibility.
- c. No player may play in the competition if he is registered for a team playing in division 1 of the Team Championships.

### **8.4 Playing Sessions, Rates of Play & Unfinished Games**

These are as for matches using the standard rate of play (Rule 6.4.c) in division 2 of the Team Championships. Rules 6.4.d and 6.4.e shall not apply.

## **9 OTHER COMPETITIONS**

All other competitions shall be played according to rules laid down by the LMC. The LMC may organize a Summer Lightning Competition, an Individual Knock-Out competition, Individual Championships to be decided by a weekend congress open only to Members, and other competitions as it sees fit.

## **10 ECF GAME FEE**

### **10.1 General**

The League will support and participate in the ECF Game Fee scheme. The Game Fee charged by the League will be that charged by the ECF to the League.

### **10.2 Team Competitions**

- a. All games played in all divisions of the Team Championship, the Team Knock-Out and the Minor Team Knock-Out are subject to Game Fee. Games in the Summer Lightning Competition are not subject to Game Fee.
- b. These Game Fees will be treated as a club due on the basis of an estimate of games to be played in the season.
- c. Clubs will be notified in September of the due for the season, which will be payable by 31st December. Early payment will attract a discount equal to any early payment discount received by the League from the ECF. The LMC may fine the club up to £5 per team for late payment.
- d. Club dues for the following season will be adjusted to reflect any difference between the original estimate and Game Fees actually incurred during the season.

### **10.3 Individual Competitions**

- a. All games played in the Individual Championships are subject to Game Fee.
- b. These Game Fees will be collected as part of the entry fee.

### **10.4 Defaulted Games**

No Game Fee will be due to the ECF on defaulted games, but the team(s) or player(s) defaulting will still be charged the Game Fee by the League.

# BRISTOL & DISTRICT CHESS LEAGUE

FOUNDED 7<sup>TH</sup> OCTOBER 1907

FOR ALL THE LATEST NEWS CONCERNING CHESS

IN THE BRISTOL & DISTRICT LEAGUE GO TO

[WWW.CHESSIT.CO.UK](http://WWW.CHESSIT.CO.UK)

