

# Bristol CHESS TIMES

The Magazine of the Bristol & District Chess League

80p

## The BRISTOL CHESSTIMES

Issue 1 April 1980

### CONTENTS

<i>Page</i>		
1.	League Tables .....	Chris Carter
2.	W.E.C.U. Championship .....	D. C. Osborne and G. W. Wheeler
3.	Official Notices .....	Chris Carter
4.	Gloucester v Devon .....	Alan Williams
6.	Chess and the Art of Sprinting .....	Alan Ashby
7.	Confravision .....	Richard Johnson
8.	End game 1. Kurajica v Karpov. Skopje 1976 .....	Mick Cook
9.	Problems .....	Ken Cleak, Alec Easton and Peter Sullivan
10.	Summer Chess .....	David Norris
11.	West of England Congress .....	Ken Derrick
13.	World Chess .....	Vincent Homolka
15.	Letters .....	G. Miller and N. Johnson
16.	Sale of the Century .....	Howard Millbank
	Adverts	
17.	Forthcoming Events	



Editor: C. Carter  
Chess Editor: D. C. Osborne  
Production Team: A. C. Brown, L. A. Dorrington, and R. S. Lowery

"BRISTOL CHESSTIMES" is the official organ of the THE BRISTOL & DISTRICT CHESS LEAGUE, but the opinions of contributors do not necessarily reflect those of the Management Committee

*The first issue of  
the Bristol Chess  
Times*



## Bristol CHESS TIMES

Editor: John Richards  
7 Maycliffe Park, Bristol,  
BS6 5JH. Tel: 0117 955 1912  
e-mail: john@r-cube.demon.co.uk

Subscriptions: £8.00 for ten issues (posted to a home address) or £6.00 for ten issues (collected from a Bristol League club). Send cheques payable to the *Bristol & District Chess League* to the Editor.

Printed by: Everest, 195  
Cheltenham Road, Bristol BS6 5QX

Advertising: rates are available on request from the Editor.

*Bristol Chess Times* is the official magazine of the Bristol & District Chess League, but the opinions of the contributors do not necessarily reflect those of the Management Committee.

Games listings and diagrams are created using ChessBase.

No parts of this magazine may be reproduced without the prior express permission of the League. All rights reserved. © 1994.

### CONTENTS

- 2 Editorial
- 3 One Hundred Not Out!
- 7 Chess and Blood
- 8 Bristol 'bunnies' batter Barbican
- 9 New Trinity Quickplay
- 10 Grading Supplement
- 16 Summer Lightning
- 17 Hannover Hangover 1994
- 18 Harambee Quickplay
- 19 Obituary: Siegfried Helbig
- 19 Books
- 20 Junior Chess
- 21 Results
- 22 Bristol Fantasy Chess
- 23 League Tables
- 24 Diary, League Notices

Next issue: 7th January.

Please send in articles, news, etc. for the next issue by 18th December.

## EDITORIAL

### Opening the Champagne

Reaching 100 issues is a very special landmark. We've been around for so long, I feel there is a sense of having a history, of being part of the furniture. I hope you enjoy reading about the history of the magazine in this special issue. It was good fun going back through all the old numbers to put this one together, but the result was there was a lot of material for this issue. Some regulars - book reviews, Frank Palm's Letter from Hannover - have been squeezed out but will be back next time.

One thing that struck me about the old Chess Times is how big it looked. Did it contain more material than it does now? I decided to do an experiment and found one and a half pages of A4 from the old format fits into one page of A5 in the new. The league tables used to take up one whole A4 page; they now fit in half of an A5. So I conclude that the modern Chess Times of 20 pages contains as much as a 30 page issue of the past.

I expect the Chess Times will be around for many more years to record Bristol's chess events; at the current rate, we should see issue 200 in November 2014 - but I won't be Editor!

### Our National League Team

When the League Management Committee discussed entering a team in the 4 Nations Chess League, we were concerned about how weak the team would be. Wouldn't it be miserable to get trounced every match? We decided it was better to compete than wimp out and I'm very glad we did. The first match alone against Barbican was a vindication. Outgraded on every board, a 4-4 result was excellent and the juniors (Jack Rudd and 9 year old Melanie Buckley) were the heroes of the hour. To lose the second match heavily to BCM was no disgrace as a quick glance at the team lists will show.

Having a team in the 4NCL is good for local chess. It keeps Bristol's name visible at the national level and it gives our best players experience of playing GMs and IMs. The juniors, in particular, will benefit.

The next 4NCL weekend is being hosted by Eagle Star at Cheltenham on 26-27 November. Why not go along on one of the days to watch some top-class chess and support our team. Roy Phillips will be happy to give you details (see Diary).

John Richards

# One hundred not out!

## The Bristol Chess Times celebrates an important landmark

### John Richards

THE *Bristol Chess Times* has reached its 100th issue. For over fourteen years now, the *Chess Times* has been serving the local chess community.

When Chris Carter, the League's Secretary, conceived the idea of a local chess magazine as an extension of his circular of official notices and league tables, the League Management Committee agreed it was a good scheme, and wanted to know whether Chris planned one or even two issues a year. But Chris had more ambitious plans. The *Bristol Chess Times* was born in April 1980 as a monthly magazine and Chris himself edited the first seven issues. Little did he know what he was starting.

Chris enlisted some helpers. Bob Lowrey designed the original front page which was reused for the first fifty issues. David Jarrett donated an old duplicator for printing copies from stencils. Len Dorrington has still got the duplicator - "which was already worn out when we got it" - stored in his attic.

An actual original copy of Issue No. 1 is now a rarity. Chris Carter was dead right when he wrote in it: "A limited number of copies of this first issue (a collector's item if ever I saw one) are available. There was a run of 40 copies of this issue." I borrowed Len Dorrington's copy to do the research for this article, but I know of no other copy still in existence. David Woodruff lent me Keynsham's collection which is complete apart from the rare number 1. In those days, you could subscribe for £1.50 (if sent with a club copy) or £2.50 (if sent to your home) for 12 issues; about a quarter of today's prices.

### Who was who in the Chess Times

There have been eight editors of the Bristol Chess Times. Richard Palmer was the longest-serving, producing 41 issues in 7 years.

Editor	Issues	No.	From	To
Chris Carter	1 7	7	4/80	11/80
Alistair Brown	8 22	15	12/80	3/82
Mick Cook	23 27	5	4/82	9/82
Alex Easton	28 42	15	10/82	4/84
Ian Stewart	43 45	3	5/84	10/84
Neil Palmer	46 47	2	11/84	1/85
Richard Palmer	48 88	41	2/85	5/92
John Richards	89 -	12	9/92	

Mick Cook was officially Editor until issue 30, but issues 28-30 were actually produced by Alex Easton after Mick had moved to Manchester. Neil Palmer stood in as interim editor after Ian Stewart left Bristol.

### Chess Editors

The first issues had a chess editor to assist the Editor in all matters to do with actual knowledge of the game. Dave Osborne held this post until issue 15. Martin Davies served from issue 18 till 22.

### Assistant Editors

Three people have had this honour: Alex Easton (23-30); Alan Williams (31-37); and Neil Palmer (43-45).

### Production / Distribution

Many people have been involved in the administration, production and distribution of the Chess Times. In particular, Alistair Brown, Len Dorrington, Bob Lowrey, Annette Oliver, Geoff Amos and Ken Cleak all deserve a mention.

## The Genesis of the Chesstimes

Spring 1980. I had been League Secretary for only a few years and one of my tasks was to issue monthly league tables. These were accompanied by a page of 'Official Notices' which were cup draws, secretarial changes, etc. Although this covered the essentials, I felt that the League could do better.

At a Management Committee meeting, I suggested that these regular circulars should be replaced by a League magazine. This publication would carry the normal notices along with articles and letters by League players; the aim being 'to improve communications in the League and to provide a forum for discussion between local players'.

"Great idea." said the LMC. "Do you intend to publish once or twice a year?" "Monthly, during the season," I replied, "plus a couple over the summer." Following a considerable pause, the Chairman expressed great faith in me and said they were all sure I could do it. The Treasurer mentioned that subscriptions should try to cover costs and we moved on to the next item on the agenda.

I was Editor. Now all I had to do was obtain articles, print them and establish the magazine as an accepted part of the League; then I could find a successor as Editor and all would be fine. Initially obtaining articles meant twisting my friends' arms and praying that other keen players would write something, sometime. Little changes.

Printing the Chesstimes was rather primitive. Photocopying existed, but our budget only allowed for the cover and one or two pages of diagrams. The rest of the magazine was typed on wax stencils using an ancient typewriter, one finger and a bottle of fluorescent pink correcting fluid. Desk top publishing was in the future. Fortunately, enthusiasm overcame the problems: Len Dorrington and Alistair Brown volunteered to actually print the stencils, Rob Lowery designed a cover and a few players offered to type articles on to the stencils.

We printed 40 copies of issue 1 in April (one per club plus 20 for prospective subscribers) on foolscap (we had some free paper and the League then, as now, was underfunded). Issue 2 followed a month later on A4, which became the standard format. By July we were printing 100 copies of issue 4 (a Manor Tyres special, 37 pages thick).

An article (annotated game) by Dr John Nunn was my most prestigious item but my personal favourite was the series of endgame articles by Mick Cook. Dave Osborne was the 'Chess Editor', responsible for analysing games and anything else beyond my limited grade. Alex Easton, Vince Homolka, Ken Cleak, Alan Ashby and Howard Millbank were other regular contributors from the start. By the time that I retired (after 7 issues in November) Martin Davies, Tyson Mordue, Jim Will and Jerry Humphreys had joined the stable.

Articles were published in the notation provided by the authors, about 75% algebraic. Just one reader complained that he wanted more articles in descriptive.

One memory of being Editor? The acetone smell of the vile pink correcting fluid.

My comments on issues 8 - 99? Excellent, hard working, editors. Amazing technical progress; it was always good but now it looks good. Many excellent articles, but too few authors. It never really became a forum for debate; players submit games, reports and technical articles but rarely ideas and opinions. Keen players now know what is happening, even if their club secretary is less than efficient. It has become an essential part of the League; the Editor now gets a seat on the LMC. A pity it is no longer monthly.

Chris Carter



By issue 2 there were 19 subscribers and the number of printed copies had risen to 55. And by the time issue 23 appeared, Chris Carter was able to report a circulation "well over 100 (about 120+ I believe)". Since then there have been ups and downs, but the circulation is now back up to that level achieved in 1982; about one in four of the regular chess players.

### Formats

The first issue of the Chess Times was printed on foolscap and ran to seventeen pages. Len Dorrington was persuaded by the others that foolscap was old-fashioned and from issue 2 onwards, the page size changed to A4. Issues were produced by typing up stencils and running pages through a duplicator.

Little was to change until issue 51 when Richard Palmer instituted the present A5 format and photocopying was used for printing. When John Richards took over at issue 89, production switched to being totally computer-based, with layout being done using a desktop-publishing program and masters being produced on a laser printer. Photocopying is still used for the final print and this results in some loss of quality.

The first fifty issues featured the two knights logo on the front cover but it disappeared when the size changed to A5. The logo has been reinstated to its proper place with this 100th issue.

The early issues contained national and international as well as local news. County chess was more important then and nearly every issue would contain results of county matches. Other popular features were "Match of the Month" and profiles of local players.

The magazine was launched in the same year as the first Bristol Manor Tyres Congress, and this gave it material to fill many pages. The first Manor Tyres was

## THE LOST ART

The thing I remember most about the time I spent as Editor of Chesstimes (excluding all the unprintable and/or libelous) is the technology that I had to use. Nowadays, Editors have access to the latest, hi-tech, state-of-the-art, space-age, ultra-modern, computer-based technology. I had stencils and an electric typewriter. Now this is perfectly OK if you are a good typist who makes few mistakes. If you are not, then recourse must be made to the Dreaded Correcting Fluid (DCF). I got totally stressed out once a month trying desperately not to make mistakes, but the more one tries to avoid them, the more mistakes are made.

DCF comes in different colours, but the one I was stuck with was red. At the end of each stencil, a complex pattern of red blobs could be seen on the stencil. I have always considered that my greatest achievement as editor was to have a pattern of blobs which was almost an exact replica of the constellation of Orion.

Despite me developing some expertise in its use, DCF never really did work all that well and left smudges on the printing. In using a typewriter and having to rely on DCF, it is a VERY good idea to write out the editorial first before typing. But with deadline at plus two days and counting there was never the time. So I wrote it as I went along. This to some very convoluted English led in the desire the DFC to avoid!!

Looking at the Chesstimes now, the production is first rate. Today's Editor can produce, with less work and a lot less stress, a much better mag. But I'll bet he has never mastered the use of correcting fluid.

Alex Easton

won by Mike Basman with John Nunn tied in second. Tony Miles and Murray Chandler tied first in 1981, and Tony Miles won outright in 1982. Sadly, the Manor Tyres series ended due to lack of local support; the sponsor wanted local publicity but few local players were entering.

In 1982, a special edition was produced to mark the 75th anniversary of the League and was distributed free to all the League's players. This contained a short history of each club as well as a history of the League and its competitions. The issue was unnumbered, so perhaps this means we have actually reached issue 101!

In all those years, a few clubs have disappeared (vanished names from 1980: Little Thatch, Bristol YMCA (the winner of the first ever League competition in 1907), Phoenix, Pegasus, Nat West Bank, Bristol Omnibus, Winterbourne, Whitchurch) but others have appeared to replace them (e.g. South Bristol, Bath, Yate & Sodbury, GE,

### The Predecessor - The Western Knight

In 1957 the League was celebrating its Golden Jubilee. The League's Secretary, J G Milton, acquired a duplicator and started a monthly League bulletin called "The Western Knight" which was distributed free to League officials and club secretaries. Individual subscriptions were encouraged and, after an initial slow start, peaked at 48 in 1959. Interest flagged and, with falling circulation, the bulletin was discontinued shortly after Mr Milton's retirement in 1962. It is not known if any copies of *The Western Knight* are still in existence.

An interesting offshoot was the "Western Knight (Bristol) Chess Club". All members of League clubs were members and its main function was to enter a team in the National Club Competition. This only happened in 1959 when Western Knight lost to Exeter (on board count) in round two. The club was disbanded in 1961.

Cossham, Harambee) and the League is roughly the same size now as then.

What else has changed? The *Chess Times* now concentrates on local news as I consider that the national and international stuff is best left to *BCM* and *CHESS*. Junior chess and book reviews now get regular spots. Congresses are reported as they always have been. However, I would like to see a revival of some of the old features, such as "Match of the Month". The layout is much improved due to the use of computers; the IBM PC had not been launched when the *Chess Times* first appeared! I would always like to increase the circulation; a figure of 150 individual subscribers should be achievable.

As we head towards issue 200, I believe the *Chess Times* still continues to serve its original purpose as set out in issue 1, "The aim of the magazine is to improve communications in the League & to provide a forum for discussion between local players. It is intended to provide reports on all local chess news, analytical articles, games, secretary's notices, letters, problems and anything that might be of interest to local chess players." However, the warning given in the special 75th anniversary edition also still applies, "the magazine will not continue to improve unless more players in the area subscribe and contribute - the Magazine will be what the Chess players in the area want it to be, and nothing more."

Subscribe now to...

*Bristol*  
**CHESS TIMES**

"excellent coverage of local events."  
British Chess Magazine

Send £8.00 for ten issues (posted to your home), or £6.00 for ten issues (sent to your Bristol League club) to:  
The Editor, Bristol Chess Times,  
7 Maycliffe Park, Bristol, BS6 5JH

Cheques or POs should be made payable to The Bristol & District Chess League.

An article from BCT 31, January 1983.

# Chess and Blood

Alan Ashby

You've all seen the sort of book and article. 'Noble' pawns 'sacrifice their lives' for the defence of their king. 'Valiant' knights 'keep guard' against 'marauding' rooks while the 'dutiful' queen 'slaughters' the opposing 'forces'. There are 'devastating attacks', 'ruthless invasions' and 'crushing blows'. Blood drips from every page.

I don't believe that any regular player actually thinks like that during a game. There just isn't time, for a start - your flag would fall long before the first humble infantryman's blood is drawn! Anyway, chess players are on the whole a peaceable lot. Of course we all prefer winning to losing, but I have yet to see a player - even a professional player - dismember his opponent out of spite.

In fact the military style of annotation is a load of bloody nonsense. You can see the retired colonel writing the notes. His face turns purple, his lips turn black, his eyes bulge and his moustache twitches as he concocts the cretinous carnage for the pleasure of his readers. Yet we are all still guilty of this sin from time to time.

A recent example I came across is from J N Walker's 'Test your chess - piece power' (Oxford University Press, 1980). I should stress that it is by no means the worst example I've seen, but it happens to be the one I came across most recently.

The first chapter of this 'instructional and entertaining book for the younger player' (to paraphrase the back cover) is entitled 'The quick kill' and features the following advice: 'The chance of a quick kill depends more upon your opponent than you ... You must remember that your first job is to

develop your pieces, aggressively if possible, and to fight for the centre ... only his mistakes will give you the chance of a successful early attack - a quick kill'.

Shortly afterwards the author gives 'Test-game 2', a game between Balla and Reti. After the opening moves 1 e4 e5 2 ♖f3 ♙c6 3 ♚b5 f5 4 d3 ♙f6 5 0-0 ♚c5 6 ♚c4 d6 7 Ng5? f4! 8 ♙f7 ♙e7 9 ♙xh8 ♚g4 10 ♙d2 ♙d4 11 ♙h1 ♙f3! 12 ♙a5 ♙xe4! 13 g3 ♙xf2+ 14 ♙xf2 ♙xf2 15 ♙g2 fg, we are treated to the following comments (I have omitted earlier comments and converted the author's full algebraic of 1 e2-e4 etc. to BCT style, normal algebraic): 'Score 3 points. White's flimsy defences are ripped apart; his king will have to face the full fury of the black pieces ...'. Then 16 hg ♚xg3! 'Score 4 points. White's whole pawn shield has been viciously clubbed away ...'. 17 ♙b5+ c6 18 ♙b4 ♙h4 19 ♚f7+ ♙e7 20 ♙xb7+ ♙f6 0-1. A fine win by Reti. But do the author's embellishments make it any more instructive or entertaining?

Before we ask ourselves *should* the style be changed, let us ask *could* it be changed? Try rereading the game, replacing the notes as follows. (Move 15) 'Score 3 points. White's position is in shreds, and his king is helpless against the co-ordinated black pieces.' (Move 16) 'Score 4 points, White's entire kingside pawn structure has been demolished...'

The book ends with the advice 'Piece power! Raiding knights hitting and running. Rooks seizing open files. The enemy defences demolished. The enemy king on the run. Bishops sweeping across open diagonals. The queen, majestic on an open board. The enemy king cornered. The execution! Piece power ... at its best'.

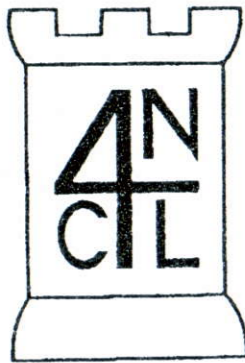
Why not simply 'Piece play! Active knights. Rooks on open files. The opposing king position weakened. The king exposed.

continued on back page

# Bristol 'bunnies' batter Barbican

## Roy Phillips

The Bristol team captain reports on a fighting start to the 4NCL season.



The first 4NCL weekend of the 94-95 season was held at the Liverpool Life Health Centre on the 1st and 2nd of October. The state of the M6 meant that many teams arrived late and, consequently, the start of the first round was delayed.

### Round 1 - bunnies on the rampage

After an eventful journey, involving an argument between a poor Nissan Micra and the mighty VW Camper "Bucklymobile", the Bristol team completed the trip in one piece. Unperturbed by playing the powerful Barbican in the first round, the Bristol bunnies hopped merrily into the ambush. Outgraded on every board, the underdogs fought with the determination of a sheepdog and the fearlessness of a chihuahua!

Chris Beaumont and Martyn Sellars scored comfortable draws with Black while the two juniors, Jack Rudd and Melanie Buckley, scored excellent victories over FM P Byway and P Garrett (BCF 155) respectively.

I was outplayed in the opening by IM Craig Pritchett and never fully recovered. Gavin Wall played his normal London System, but half way through the middle game the position exploded and became as woolly as Steve Roberts with a knitting basket. It took only one mistake to decide the game which unfortunately came from our side. Paul Helbig had an interesting game but lost on time after constant pressure from Gary Kenworthy.

### Collier is a smoothie

So, at 4-3 down, all eyes were on Dave Collier to save the day. He was a pawn up, but the position didn't look too easy. Dave, however, kept his cool and played the final part of the game as smoothly as Stephen Fry advertising Heineken.

A sensational performance to take a point from one of the competition's favourites.

Bristol & District	Barbican
Chris Beaumont ½-½	IM C Crouch
Gavin Wall 0-1	FM R Britton
Roy Phillips 0-1	C Pritchett
Jack Rudd 1-0	P Byway
Paul Helbig 0-1	G Kenworthy
David Collier 1-0	A Dunn
Martyn Sellars ½-½	WIM N Regan
Melanie Buckley 1-0	P Garrett
	4-4

### Round 2 - who's afraid of the BCM?

Having been softened up by the Barbican, the team with no fear were now facing what was surely the strongest team in Liverpool that weekend. The British Chess Magazine team boasted 2 GMs, 2 IMs, 2 WIMs, and 2 FMs! But with the confidence gained from the previous day's results we were ready to face anyone. (To give you an idea of the difference between the two teams, Melanie Buckley was facing an opponent who, on paper, outgraded her by more than double!)

Bristol & District	BCM
Chris Beaumont 0-1	GM M Chandler
Gavin Wall ½-½	GM J Mestel
Roy Phillips ½-½	IM R Bellin
Jack Rudd 0-1	B Cafferty
Paul Helbig 0-1	IM B Wade
David Collier 0-1	WIM J Bellin
Martyn Sellars ½-½	D Anderton
Melanie Buckley 0-1	WIM I Lauterbach
	1½-6½

Our joy was not continued, however, and we were comprehensively beaten 6½-1½; the three draws coming from Gavin Wall, Martyn Sellars (the only person to get a

result on both days) and myself (following a game about as interesting as Steve Davis running through a stamp collection).

The next weekend is on 26th and 27th of November in Cheltenham. Well done to everyone who played, and special thanks to Sebastian Buckley for providing the "Bucklymobile" that got us to Liverpool in such style.

	P	W	D	L	F	A	Pts
BCM	2	2	0	0	11½	4½	4
Midland Mnchs	2	2	0	0	11	5	4
NW Eagles	2	2	0	0	10½	5½	4
Wood Green	2	1	0	1	8½	7½	2
Covent Garden	2	1	0	1	8	8	2
Slough	2	1	0	1	8	8	2
Witney	2	1	0	1	7½	8½	2
S Wales Drgns	2	1	0	1	7	9	2
Barbican	2	0	1	1	7½	8½	1
Bristol & District	2	0	1	1	5½	10½	1
Invicta Knights	2	0	0	2	6½	9½	0
Na Fianna	2	0	0	2	4½	11½	0

## Strong field at New Trinity

Devon Thomas's latest venture yielded Bristol's strongest ever one day tournament with ten players over 195, including GM Stuart Conquest and IM Andrew Martin.

Seven players made it to 3/3 including Downend's Jerry Humphreys and Bath's Rob Eyley; Eyley having dismissed IM Andrew Martin in round three. All of the top fourth round games were drawn, except for James Cobb who beat giant-killing Eyley to take a short-lived half point lead.

In round five, Conquest beat Cobb, whilst Gavin Wall saw off Graham Buckley, leaving Conquest and Wall to fight it out for first place.

Generous sponsorship from Pizza Delight meant there was excellent prize money on offer, and with six grading bands nearly one third of the entrants went away with a prize.

1 GM Stuart Conquest *Sea Mills* 5½/6; 2= Simon Ansell *University*, Charles and James Cobb *Swindon*, IM Andrew Martin *London* 5.

U-180: Carl Evans *Aberdare*, Karl Green, Jerry Humphreys *Downend*, Dave Osborne *Grendel*, Ian White *Gloucester* 4.

U-161: Stuart Ansell, Roger Morgan *both University*, Andrew Nicholls *Grendel*, Devon Thomas *Harambee* 4.

U-141: Kenneth Dan, Paul Heaton *University* 4.

U-121: Ian Ponter *Gloucester*, Andy Sherman *Cossham* 3½.

U-101: Lloyd Beckford *Harambee*, David Harris *Hereford*, Michael Jacobs *Bath*, George Wright *Harambee* 3.

Juniors U-12: Simon Williams *South Birmingham*, Leigh Debbage *Swindon*.

There was also a highest-first-round-loser prize. The only eligible person on 4 points who hadn't already got a prize of some kind was Roy Phillips *Grendel*, rated 195, who was given a small consolation prize of £8 to help him get over having lost to Peter Chaplin of Clevedon, rated 152 and the British under-16 champion.

Colin Axon

## THE COMPLETE SECRETARIAL SERVICE

- \* CVs
- \* FAX
- \* TYPING
- \* COPYING
- \* PRINTING
- \* WORD PROCESSING

ESTABLISHED 1934

# EVEREST

BRISTOL  
(0272) 246248

195 Cheltenham Road, Bristol BS6 5QX

# Bristol CHESS TIMES

## Grading Supplement

This grading supplement contains the *corrected* 1994 grades for all Bristol & District League players. The data has been reproduced by kind permission of the British Chess Federation.

You can buy a national grading list, price £9 (£7 to BCF Direct Members), from the BCF, 9a Grand Parade, St Leonards-on-Sea, East Sussex, TN38 0DD.

As most readers will be aware, the published national list has incorrect ratings for Bristol & District League players. The list given here has been produced by the BCF to correct those errors. You should quote the grade given here when entering tournaments. Note that tournament directors outside the South West may not have heard of the corrections; you may need to produce a copy of this list.

Any further suspected errors can be reported, in writing please, to the League's Grading Officer (see Fixture Book for address). In particular, he would like the date of birth for those juniors marked as '99', corrections to clubs, and identification of duplicate players. Team captains should ensure they use full initials on match result sheets, and for new players quote the reference number if possible.

Subscribe now to...

# Bristol CHESS TIMES

"excellent coverage of local events."  
British Chess Magazine

Make sure you don't miss any of the great items coming in the next few issues.

Send £8.00 for ten issues (posted to your home), or £6.00 for ten issues (sent to your Bristol League club) to:  
The Editor, Bristol Chess Times,  
7 Maycliffe Park, Bristol, BS6 5JH

Cheques or POs should be made payable to The Bristol & District Chess League.

Code	Name	Club	Jnr	This	(Lst)
135571F	ALLAWAY P	BRISTOL ROYALS	A102	(86)	
154094E	ALLEN RICHARD M	BRISTOL & CLIFTON	B115	(115)	
105776F	ANSELL SIMON T	COWLEY CHENEY SCH BRISTOL UNIV 4NCL	A205	(205)	
161107A	APPLETON FR	BATH	D171	(-)	
105897G	ASHFORD M	BRISTOL SUN LIFE	D125	(124)	
105915E	ASHTON G	HANHAM FOLK CEN.	C114	(115)	
137806F	AXON CJ	BRISTOL UNIV	A 69	(77)	
106016J	BACON R	DOWNEND&FISHPOND	D110	(100)	
106026A	BAGSHAM P	SOUTH BRISTOL	C106	(114)	
106027C	BAGSHAM RJ	SOUTH BRISTOL	C112	(120)	
106075C	BAKER A	BRISTOL CABOT	C 88	(94)	
106080G	BAKER CHRIS W	NORTHAMPTON BRISTOL & CLIFTON 4NCL	A206	(212)	
106083B	BAKER JC	COSSHAM(BRISTOL)	B119	(130)	
106093E	BAKER R	BRISTOL & CLIFTON	C165	(164)	
144866D	BALE ALEX	KEYNSHAM	17 B 95	(80)	
106235K	BARLOW RUSSEL J	KING EDWARD S BT DOWNEND&FISHPOND NORTON RADSTOCK	A150	(153)	
106267A	BARNETT MJ	CIVIL SERVICE BL	C 81	(85)	
154101J	BARRET L	HARAMBEE	C 30	(20)	
149735C	BATEMAN D	DOWNEND&FISHPOND	D 41	(45)	
154103B	BATTEN P	HORFIELD&REDLAND	D106	(109)	
106463A	BEARD JACK	BRISTOL CABOT	D 63	(59)	
106458H	BEAUMONT CR	BRISTOL & CLIFTON 4NCL BRISTOL	A212	(206)	
106610K	BENNETT M	HANHAM FOLK CEN.	B101	(85)	
106665B	BERRY R	THORNBURY BRISTL	B 80	(75)	
161109E	BEST P	BRISTOL UNIV	D 75	(-)	
106712G	BIDDICK EIS	HANHAM FOLK CEN.	A136	(123)	
106743G	BILLOWS R	MAILSEA	B 82	(92)	
106751F	BINKS ME	DOWNEND&FISHPOND	B206	(184)	
103004J	BIRD MARTIN	MAILSEA	A117	(127)	
161110A	BIRD R	DOWNEND&FISHPOND	D 62	(-)	
161111C	BISP R	BRISTOL GRENDDEL	E 31	(-)	
154105F	BISSICKS P	BRISTOL & CLIFTON	B124	(117)	
106978A	BONIFACE SR	BRISTOL GRENDDEL	D148	(151)	
149752C	BOOKER M	BRISTOL GRENDDEL	D 89	(97)	
107012F	BORKOWSKI JA	CLEVEDON	A157	(158)	
107040L	BOURNE I	BRISTOL & CLIFTON	E160	(160)	
151874E	BOURNE THOMAS P	BRISTOL & CLIFTON	10 A 93	(90)	
149727D	BOWDEN P	CLEVEDON	C128	(125)	
107111H	BOYCE JR	BRISTOL & CLIFTON	A163	(163)	
107144A	BRADLEY CHRIS C	HANHAM FOLK CEN.	C164	(158)	
107221D	BREEZE G	HORFIELD&REDLAND	B139	(152)	
102967J	BRIDGEMAN M	BRISTOL GRENDDEL	C 98	(89)	
107264L	BRIGDEN ME	DOWNEND&FISHPOND	A176	(177)	
151935K	BRIGHT OLIVER M	KEYNSHAM	11 A105	(88)	
153702H	BRIGHT RICHARD	OPENING MOVES KEYNSHAM	D 61	(47)	
154000C	BRIGHT SOPHIE	BRISTOL CENTRAL	9 D 66	(74)	

Code	Name	Club	Jnr	This	(Lst)	Code	Name	Club	Jnr	This	(Lst)
149737G	BRITTON R	DOWNEND&FISHPOND	B 34	(30)		136360J	COLES A	CLEVEDON	D 93	(94)	
107324C	BROADWAY T	HANHAM FOLK CEN.	B 95	(99)		148779G	COLFER JENNIFER	MARLWOOD SCHOOL	14 B 89	(84)	
154111A	BROOKE-SMITH M	CLEVEDON	13 B 93	(61)		149179K	COLFER RICHARD	MARLWOOD SCHOOL	13 A130	(124)	
107351F	BROOKES CJ	SOUTH BRISTOL	D157	(164)		108627D	COLLIER DAVID O	BRISTOL & CLIFTON 4NCL BRISTOL	A180	(183)	
107362L	BROOKS DH	CLEVEDON	D 60	(62)		108630D	COLLIER MJ	BRISTOL CABOT	B127	(125)	
149024B	BROOKS P	THORNBURY BRISTL	B156	(151)		161136H	COLLINS M	THORNBURY BRISTL	E100	(-)	
161117D	BROUGH DA	BRISTOL UNIV	D 74	(-)		108720E	CONNOR JH	CLEVEDON	B122	(109)	
107416H	BROWN C	HANHAM FOLK CEN.	D 94	(94)		135528E	CONQUEST CHARLES	SEA MILLS	D126	(124)	
149772J	BROWN H	HARAMBEE	C 22	(27)		108726F	CONQUEST STUART C	SEA MILLS 4NCL	A237	(238)	
107461B	BROWN JK	MAILSEA	D145	(150)		108744H	CONWAY D	BRISTOL ROYALS	C 76	(84)	
102942D	BROWN MATTHEW L	CLEVEDON	C158	(155)		149838B	CONWAY M	BRISTOL UNIV	C 88	(91)	
154112C	BROWN RA	BRISTOL & CLIFTON	C129	(139)		153739J	COOKE ANDREW	BRISTOL JUNIORS	15 B 86	(83)	
162580K	BUCKLEY DAVID	OPENING MOVES	14 D107	(-)		149825D	COOKE M	MARLWOOD SCHOOL	E 66	(63)	
107599J	BUCKLEY GRAEME M	KEYNSHAM SOMERSET JUNIORS BUSHBURY	A214	(220)		136362B	COOKE S	BRISTOL GRENDDEL	C133	(134)	
162591D	BUCKLEY MELANIE	BATH D.H.S.S. KING'S HEAD	12 D 98	(-)		108817J	COOPER ANDREW C	BRISTOL & CLIFTON DEVIZES	A192	(196)	
161121F	BUCKLEY SAF	KEYNSHAM	D 87	(-)		108869F	COPELAND GP	GLOUCESTER DOWNEND&FISHPOND	B179	(190)	
164869L	BUCKLEY SAMUEL B	KEYNSHAM	5 D 58	(-)		109005H	COX T MAX	BATH	E 74	(78)	
162581A	BUCKLEY SIMON	OPENING MOVES KEYNSHAM	9 A106	(-)		149789D	COY P	MAILSEA	B 68	(62)	
107652J	BUNN R	HANHAM FOLK CEN.	C 92	(101)		109075G	CREWE B	HORFIELD&REDLAND	B128	(120)	
107671B	BURGESS GRAHAM K	DOWNEND&FISHPOND BRISTOL & CLIFTON CAMB UNIV 4NCL BRISTOL	8208	(216)		109198A	CULLUM J	HANHAM FOLK CEN.	C160	(164)	
107676A	BURGON A	MAILSEA	C 89	(88)		109241J	CUSICK PW	GLOUCESTER DOWNEND&FISHPOND	B156	(161)	
136342G	BURKE D	SEA MILLS	C 80	(91)		109298E	DANIELS M	BRISTOL GRENDDEL	B133	(127)	
149795K	BURNS L	SEA MILLS	D100	(96)		109331K	DAVEY D	BRISTOL & CLIFTON	C126	(135)	
154113E	BURTON MC	BRISTOL UNIV	D 79	(78)		109383G	DAVIES MS	HORFIELD&REDLAND	C166	(174)	
149766C	BURTON W	HANHAM FOLK CEN.	B 82	(77)		161144G	DANWAY D	BRISTOL UNIV	D101	(-)	
154114G	BUTTERWORTH P	BRISTOL GRENDDEL	B126	(114)		154126C	DAY K	BRISTOL GRENDDEL	C127	(117)	
161124A	BYRNE M	BRISTOL CABOT	D 35	(-)		109484B	DAY PETER F	DURSLEY	C143	(146)	
161126E	BYRNE PJ	BRISTOL CABOT	D 69	(-)		149798E	DE GAY J	SEA MILLS	E 46	(46)	
154115J	CALVERLY J	HORFIELD&REDLAND	D144	(138)		109517B	DEAN A	DURSLEY	D117	(116)	
103011F	CAMERON GA	BRISTOL SUN LIFE	B137	(134)		109531G	DEAN MS	KEYNSHAM	C134	(130)	
154116L	CAMILLERI AJ	HORFIELD&REDLAND	A116	(116)		102994A	DEAR M	HORFIELD&REDLAND	C122	(128)	
108049A	CARTER CHRIS M	BRISTOL GRENDDEL	C154	(150)		161146L	DERRICK MD	BRISTOL CABOT	D 72	(-)	
154118D	CATCHPOLE A	BRISTOL GRENDDEL	E 75	(72)		161148D	DI BONITO P	BRISTOL GRENDDEL	D 91	(-)	
108203G	CHANDLER MJ	KEYNSHAM	A 51	(57)		109643G	DIBBLE M	CIVIL SERVICE BL	C 77	(84)	
147864D	CHAPLIN PETER	WESTON S MARE CLEVEDON	16 A153	(136)		109665F	DICKS D	DOWNEND&FISHPOND	C168	(168)	
154119F	CHUBB C	SOMERSET JUNIORS BRISTOL GRENDDEL	10 E 22	(17)		109679F	DILLEIGH STEVEN P	DURSLEY NUCLEAR ELECTRIC			
108425C	CLARKE ALAN	BRISTOL GRENDDEL	B166	(153)		109679F	DILLEIGH STEVEN P	SEA MILLS	A182	(174)	
103005L	CLARKE D	MAILSEA	B118	(107)		153540H	DOWER M	BRISTOL GRENDDEL	D 54	(42)	
162531H	COLE STEVEN	MAILSEA	E 54	(-)		109854J	DRAISEY HJ	KEYNSHAM HORFIELD&REDLAND	A114	(124)	
108592L	COLE VIVIAN J	PINNER BRISTOL UNIV	C177	(169)		109869L	DRING GEOFFREY D	CLEVEDON	B125	(131)	
						136384A	DUGDALE A	THORNBURY BRISTL	16 A117	(110)	
						109916E	DUGDALE D	MARLWOOD SCHOOL	B151	(150)	
						102969B	DUNN A	THORNBURY BRISTL	C112	(118)	
								BRISTOL GRENDDEL			

Code	Name	Club	Jnr	This	(Lst)	Code	Name	Club	Jnr	This	(Lst)
149700F	DURBIN RJ	BRISTOL & CLIFTON		B 51	( 59)	111687D	GREGORY RON W	BATH		B 147	( 141)
110045C	EASTON A	HORFIELD&REDLAND		C 187	( 191)	111705B	GRIFFEE J	DOWNEND&FISHPOND		C 101	( 110)
110119F	EDWARDS J	HANHAM FOLK CEN.		C 68	( 74)	148704J	GRINFELDS G	DURSLEY		D 125	( 132)
110156A	EGGINTON DAVID	MAILSEA		A 162	( 167)	161176J	GROSSETT DD	BRISTOL & CLIFTON		E 131	( - )
		LIME TREE PARK				161178B	GUNATILLEKE I	BRISTOL UNIV		D 59	( - )
149776F	ELPHICK D	HORFIELD&REDLAND		C 72	( 63)	111838K	GUYATT FJ	DOWNEND&FISHPOND		B 76	( 95)
110246B	EMBLIN SR	BRISTOL GRENDDEL		C 79	( 80)	111882B	HALE MICHAEL	COSSHAM(BRISTOL)		C 123	( 110)
110298K	EVANS CHRIS J	SOUTH BRISTOL		A 152	( 150)	136434A	HALL S	SEA MILLS		E 123	( 119)
110312L	EVANS DR	THORNBURY BRISTL		A 134	( 130)	134645D	HALL-ROBERTS S	TAUNTON		D 132	( 120)
110337F	EVANS P	BRISTOL CABOT		C 81	( 91)			BRISTOL GRENDDEL			
149690G	EYLEY RJ	BATH		C 188	( 191)	144858E	HANCOCK C	KEYNSHAM		C 115	( 87)
144861E	FARIMA MAURO	KEYNSHAM		C 112	( 109)	144859G	HANCOCK D	KEYNSHAM	12	D 25	( 39)
110462H	FARRINGTON BJ	THORNBURY BRISTL		A 129	( 138)	135540F	HANCOCK M	COSSHAM(BRISTOL)		B 159	( 159)
		NUCLEAR ELECTRIC				161181B	HARDWIDGE C	CIVIL SERVICE BL		E 28	( - )
149691J	FAUKNER MJ	BATH		D 153	( 150)	112095F	HARDY R	SEA MILLS		A 148	( 160)
110481A	FANECETT JK	KEYNSHAM		A 164	( 161)	161182D	HARLEY A	BRISTOL UNIV		E 64	( - )
161154K	FANECETT T	BRISTOL GRENDDEL		E 75	( - )	154146J	HARRIOTT D	HARAMBEE		C 70	( 51)
161155A	FEAR J	KEYNSHAM		E 29	( - )	154386G	HARRIS NEIL	THORNBURY BRISTL	15	D 86	( 92)
161156C	FEAR M	KEYNSHAM	13	E 15	( - )	154148B	HARRISON D	DOWNEND&FISHPOND		D 26	( 24)
102946A	FEENEY M	BRISTOL & CLIFTON		D 42	( 55)	149777H	HART JC	HORFIELD&REDLAND		C 144	( 154)
102701D	FELL P	DURSLEY		B 141	( 133)	112272B	HARVEY JOHN R	DURSLEY		D 103	( 100)
141113F	FERRIS W	SEA MILLS	99	E 110	( 107)	161185K	HARVEY K	SEA MILLS		E 65	( - )
161157E	FINNEMORE C	BRISTOL UNIV		E 90	( - )	161186A	HARVEY T	SEA MILLS		E 62	( - )
110594C	FINNEMORE SR	HORFIELD&REDLAND		B 116	( 111)	149755J	HASELL G	BRISTOL GRENDDEL		E 50	( 53)
138648H	FLETCHER EDWIN A	CLEVEDON	15	A 98	( 107)	112377E	HAYDON R	BRISTOL & CLIFTON		A 199	( 195)
154139A	FOLUKE S	HARAMBEE		E 15	( 16)			SWINDON LIBS.			
161160E	FORD N	BRISTOL & CLIFTON		E 25	( - )			WITNEY			
161162J	FRACZ M	HORFIELD&REDLAND		D 46	( - )	161187C	HAYWARD B	BRISTOL SUN LIFE		D 66	( - )
135534L	FRANCIS D	HORFIELD&REDLAND		A 114	( 118)	112417B	HEADLONG T	BRISTOL & CLIFTON		A 194	( 194)
149801A	FREEMAN EDWARD	SEA MILLS		C 149	( 160)			SWINDON LIBS.			
110951A	FRY LS	BRISTOL GRENDDEL		B 120	( 110)			WITNEY			
110989D	FURMSTON MP PROF	BRISTOL & CLIFTON		D 165	( 165)			4NCL			
161163L	FURNEVALL M	HORFIELD&REDLAND		D 93	( - )	112468H	HELBIG DJ MRS	KEYNSHAM		A 103	( 104)
136412B	GAGE R	HANHAM FOLK CEN.		B 82	( 82)	112469K	HELBIG PD	BATH		C 193	( 184)
161164B	GALL D	BRISTOL & CLIFTON		D 84	( - )	112470F	HELBIG S	KEYNSHAM		B 97	( 100)
161165D	GAMMON G	DOWNEND&FISHPOND		D 67	( - )	112507C	HENDY JS	KEYNSHAM		A 144	( 144)
161166F	GAM JC	BRISTOL UNIV		D 60	( - )	112514L	HENMIGAN MICHAEL T	MUSWELL HILL		A 234	( 224)
136414F	GARDNER J	DOWNEND&FISHPOND		C 48	( 52)			BRISTOL UNIV			
154141K	GARRETT R	COSSHAM(BRISTOL)		C 151	( 159)			4NCL			
161168K	GAZZARD C	DOWNEND&FISHPOND		E 87	( - )	126286F	HERBERT DC	BRISTOL SUN LIFE		C 166	( 168)
111147E	GEOGHEGAN TE	SEA MILLS		C 140	( 135)	136450K	HEWITT T	DOWNEND&FISHPOND		C 51	( 59)
111148G	GEORGE A	BRISTOL & CLIFTON		B 106	( 108)	149768G	HIBBARD J JNR	HANHAM FOLK CEN.	16	B 90	( 69)
111232G	GILES C	SOUTH BRISTOL		D 113	( 119)	122520A	HICKMAN D	WRITTLE		D 116	( 113)
111267D	GINGELL M	COSSHAM(BRISTOL)		B 159	( 153)			BRISTOL UNIV			
111278J	GLADSTONE M DR	MAILSEA		B 133	( 145)	149703A	HIGGINS RJ	MAILSEA		B 125	( 124)
119519A	GOAD BR MRS	DOWNEND&FISHPOND		C 105	( 108)	112676D	HILL R	SEA MILLS		C 113	( 107)
111351D	GOLDING PA	CLEVEDON		B 142	( 128)	161193J	HILL-WOOD E	BRISTOL UNIV		D 112	( - )
111468C	GOULD J	HANHAM FOLK CEN.		C 145	( 157)	103009H	HILLIER K	SOUTH BRISTOL		C 104	( 109)
135537F	GOURLAY D	HORFIELD&REDLAND		B 118	( 113)	112729K	HIPWELL BD	DURSLEY		C 129	( 130)
161171K	GOVER A	BRISTOL & CLIFTON		E 63	( - )	112742B	HISCOX D	SEA MILLS		C 84	( 83)
161174E	GREEN P	BRISTOL UNIV		E 40	( - )	161195B	HOGAN C	COSSHAM(BRISTOL)		E 109	( - )
111638B	GREENLAND G	BRISTOL GRENDDEL		B 97	( 94)	162545H	HOLLAND NEIL	MAILSEA		E 76	( - )
111673D	GREGORY A	BATH		D 119	( 120)	113055K	HOUSE KC	MAILSEA		C 165	( 160)
						136460B	HOUSE V	MAILSEA		C 80	( 96)

Code	Name	Club	Jnr	This	(Lst)	Code	Name	Club	Jnr	This	(Lst)
113143G	MUDSON D	HORFIELD&REDLAND		A 116	( 117)	114151L	LAWRENCE R	CLEVEDON		C 99	( 96)
113187E	HUGHES MW	SOUTH BRISTOL		C 133	( 122)	136488B	LEDBURY MA	BATH		C 141	( 134)
113223E	HUMPHREYS J	DOWNEND&FISHPOND		A 179	( 170)	154161E	LEE G	HARAMBEE		C 89	( 92)
1132947C	HUNT C	BRISTOL & CLIFTON		D 174	( 172)	114331B	LEVENE M	BRISTOL & CLIFTON		E 162	( 162)
154152D	IWI GR	BRISTOL UNIV		A 121	( 80)	154162G	LEVINE J	BRISTOL & CLIFTON		B 92	( 94)
153715F	JACOBS M	BATH		D 73	( 82)	149807B	LINDUP P	SEA MILLS		C 51	( 50)
140024C	JACOBS S	BATH	99	D 107	( - )	114458D	LINTON WILLIAM A	MUSHROOMS		B 194	( 198)
		KINGS COLLEGE S						BRISTOL SUN LIFE			
149743B	JARVIS B	DOWNEND&FISHPOND		C 49	( 43)	161214B	LIVINGSTONE MMS	BRISTOL UNIV		E 92	( - )
149744D	JARVIS R	DOWNEND&FISHPOND		E 28	( 26)	136494H	LOCK RJ	BRISTOL ROYALS		B 162	( 157)
113569H	JEFFERIES A	BRISTOL ROYALS		C 55	( 66)	154163J	LOGIN D	BRISTOL UNIV		B 81	( 80)
154153F	JEFFERIES TA	BRISTOL GRENDDEL		B 108	( 89)	161216F	LONG A	BRISTOL UNIV		D 98	( - )
141202F	JEFFREYS I	BRISTOL UNIV		D 63	( - )	161217H	LONG M	BRISTOL GRENDDEL		D 49	( - )
113596L	JENKINS D	CIVIL SERVICE BL		C 94	( 102)	132194J	LOOK MATTHEW J	KEYNSHAM	16	A 153	( 131)
178103D	JENKINS DP	BATH		D 104	( 106)			SOMERSET JUNIORS			
135549B	JENNINGS M	HANHAM FOLK CEN.		C 58	( 54)	114636B	LOWERY RS	SEA MILLS		C 130	( 137)
141203H	JEWEL F	HORFIELD&REDLAND		E 104	( - )	114657K	LUDGATE NR	THORNBURY BRISTL		C 156	( 159)
149757B	JOHNSON A	BRISTOL GRENDDEL		C 93	( 97)	161220H	LYNCH M	COSSHAM(BRISTOL)		E 73	( - )
153748K	JOHNSON JODY	BRISTOL JUNIORS	15	A 126	( 113)	149759F	MALLETT C	BRISTOL GRENDDEL		C 109	( 103)
		MARLWOOD SCHOOL				161223C	MALLETT R	BRISTOL GRENDDEL		E 65	( - )
154154H	JONES B	BRISTOL GRENDDEL		B 52	( 25)	121932H	MANLEY R	BRISTOL UNIV		E 75	( 75)
141206C	JONES CA	BRISTOL UNIV		D 66	( - )	126288K	MAPLE MH	BRISTOL SUN LIFE		C 115	( 112)
113786E	JONES CJA	BRISTOL & CLIFTON		B 180	( 183)	114916H	MARKE TM	COSSHAM(BRISTOL)		A 131	( 121)
113794D	JONES DA	SOUTH BRISTOL		C 150	( 151)	114917K	MARKEY KD	DURSLEY		B 129	( 134)
135551L	JONES DR	SOUTH BRISTOL		C 99	( 106)	114921A	MARKS A	DOWNEND&FISHPOND		B 105	( 113)
149790L	JONES DS	MAILSEA		D 100	( 102)	114924G	MARKS JT	COSSHAM(BRISTOL)		C 116	( 118)
113841J	JONES K	MAILSEA		A 122	( 112)	114932F	MARRINER C	BRISTOL SUN LIFE		B 119	( 117)
154155K	JONES M	DOWNEND&FISHPOND		D 123	( 122)	154164L	MARTIN B	HARAMBEE		E 25	( 26)
149713D	JONES P	HORFIELD&REDLAND		C 110	( 116)	115077H	MATHER T	MAILSEA		B 135	( 124)
149791B	JONES RS	MAILSEA		B 92	( 75)	115123L	MAY D	CLEVEDON		D 76	( 75)
127304J	JUPP LAURENCE	TRURO		B 137	( 135)	161228B	MAYERS T	HARAMBEE		D 77	( - )
		FALMOUTH				161229D	MCANDREWS D	BRISTOL UNIV		D 129	( - )
		BRISTOL UNIV				115163A	MCCAULDER I	BRISTOL CABOT		C 88	( 88)
154156A	KEEN D	BRISTOL GRENDDEL		D 47	( 32)	136510B	MCINTOSH P	BRISTOL & CLIFTON		C 116	( 118)
154158E	KELLY D	HANHAM FOLK CEN.		D 67	( 67)	161232D	MELKMAN D	BRISTOL UNIV		D 74	( - )
149805J	KENDRY A	SEA MILLS		D 162	( 163)	115521A	MILLBANK HK	HORFIELD&REDLAND		C 131	( 141)
127549F	KIFF RJ	THORNBURY BRISTL		A 141	( 146)	115533H	MILLER GI	SOUTH BRISTOL		D 146	( 146)
		NUCLEAR ELECTRIC				115570C	MILLS STUART	MAILSEA		A 123	( 121)
127553H	KILLEY A DR	BRISTOL & CLIFTON		C 127	( 151)	147472J	MINSALL M	THORNBURY BRISTL		B 87	( 84)
136386E	KOFI OG	HARAMBEE		C 79	( 84)	115651C	MOBBS G	BRISTOL SUN LIFE		A 94	( 102)
127711L	KORZENIEWSKI ROMAN	KENTS LUTON		A 139	( 145)	161238E	MOONEY R	BRISTOL UNIV		D 83	( - )
		WIGSTON				115754B	MORDUE A TYSON	DOWNEND&FISHPOND		A 204	( 200)
		BOURNE END						KEYNSHAM			
		DOWNEND&FISHPOND						BRAILLE C.A.			
		BRISTOL GRENDDEL		B 30	( 23)			4NCL			
154160C	KUJORI A	BRISTOL GRENDDEL		D 38	( - )	161239G	MORGAN D	HARAMBEE		E 39	( - )
141210E	LAGARDE A	MAILSEA		C 118	( 110)	161240C	MORGAN R	BRISTOL GRENDDEL		D 97	( - )
114060H	LANGDON TL	COSSHAM(BRISTOL)		D 74	( 66)	115780C	MORGAN ROGER	ASHTAD		A 151	( 153)
135554F	LASSMAN I	BRISTOL ROYALS		C 221	( 221)			BRISTOL UNIV			
114121B	LAW ANDREW P	BRISTOL & CLIFTON				153752A	MORGANS ANDREW	BRISTOL JUNIORS	16	C 104	( 114)
		RICHMOND & TWKHM						MARLWOOD SCHOOL			
		B.T.(H.Q.)				161241E	MOSS D	DOWNEND&FISHPOND		D 101	( - )
		WOOD GREEN				126215E	MUMN A	HORFIELD&REDLAND		C 112	( 112)
		4NCL									
136484E	LAWRENCE AM	BRISTOL SUN LIFE		B 152	( 140)						





## Clifton deliver lightning strike to Horfield

### Colin Axon

A thrilling climax to the new-look Summer Lightning Tournament between Clifton and Horfield resulted in a narrow victory, 19½-16½, for the number two seeds. Clifton pulled out all the stops to field a formidable side (Craig, Haydon, Cooper, Collier, Wilkinson and Jones) which heavily outgraded their opponents.

Grendel kindly offered to act as neutral hosts for this 'final'; their spacious new premises, the Full Moon, proving to be an excellent venue.

#### Thrilling spills

There were of course many other thrills and spills along the way: Clevedon performed superbly, losing only to Clifton, in the first round; University suffered badly due to many of the stronger students being away for the Summer Vac; both of the Cossham teams showed up well; and the final round saw a number of very close matches.

#### Shook-up grown-ups

However, for me, the stars of the competition were the juniors of Opening Moves with organiser Iain Bourne on top board. They cut up Cabot to beat their first adult team in the second round, having lost to

Thornbury I in the first. Then in the third, they lost by the narrowest of all possible margins to a shaken and surprised Clevedon in what was, by all accounts, a thrilling match. Liking their cliff-hangers (can children be fed upon a diet of adrenaline alone?!) they reversed the scoreline against Hanham to finish on 50%. A truly creditable performance in which they gained valuable experience.

Here then is the final table:

	P	W	L	F	A	Pts
Clifton	4	4	0	102	42	4
Grendel 1	4	3	1	98½	45½	3
Downend	4	3	1	97	47	3
Horfield	4	3	1	85	59	3
Clevedon	4	3	1	81	63	3
Cossham 1	4	2	2	83	61	2
Cossham 2	4	2	2	81½	62½	2
South Bristol	4	2	2	78½	65½	2
Opening Moves	4	2	2	75½	68½	2
University	4	2	2	65½	78½	2
Nailsea	4	2	2	63½	80½	2
Grendel 2	4	2	2	57½	86½	2
Thornbury 1	4	2	2	51	93	2
Hanham	4	1	3	65½	78½	1
Harambee	4	1	3	54½	89½	1
Royals	4	1	3	53	91	1
Keynsham	4	1	3	47½	96½	1
Thornbury 2	4	1	3	45½	98½	1
Grendel 3	4	1	3	40	104	1
Cabot	4	0	4	37½	106½	0

### Make-a-Will Month

November is Make-a-Will Month, when solicitors and others will be trying to persuade people of the benefits of making a Will.

If you are considering making, or revising, your Will, then instead of leaving everything to the Bristol Dogs' Home, why not consider making a small bequest to benefit chess? Your own club, the League, or the Bristol Chess Educational Trust are all possibilities you may wish to consider.

John Richards

### Forthcoming Events:

4-6 Nov. Hanham Congress

14 Nov. Grendel 10 minute Chess Challenge

26-27 Nov. 4NCL weekend at Cheltenham.

3-5 Feb. Bristol League Congress.

For details see Diary on back page.

# Hannover Hangover 1994

### Steve Boniface

THE usual annual exchange between Bristol and Hannover was somewhat different this year. Partly because of difficulty over dates (the official council visit is on the weekend of the Hanham Congress) five intrepid souls decided to make a pirate raid from 24th - 29th September. Not only did this give us nearly six days in the country, it worked out considerably cheaper than the projected November trip.

So it was that Chris Hunt, Chris Weeks, Steve Boniface, Bob Radford and Bob Bagshaw arrived on a sunny afternoon in Hannover to be whisked from the airport to a local flea market to our first drink of the day (not strictly true - the bar on the Lufthansa flight was free!). Having softened us up thus, and pausing only for a quick wash-and-brush-up we proceeded to the University for the first fixture, a 5-minute blitz tournament. The main attraction here was a table groaning with food and strong beer; some hosts suspiciously sipping mineral water and orange juice.

Much weakened by the liquid refreshment and the dried salty eels, we did not do very well in the contest. After five rounds of the all-play-all, we had amassed only a few points (but many pints!), and most of those against each other. The final score was somewhat better than it might have been; our main revenge was on one German who mistook a bottle of Jameson's vintage whiskey for lemonade and had to be helped on to the train.

Fortunately it was the end of Summer time, so at least we had the benefit of an extra hour's sleep (and didn't have to wind our watches back) to prepare for the main match on Sunday.

That day's morning for the intellectual (and

foolish?) was a visit to some of Hannover's museums. Not content with intoxicating us, we were now subject to a severe attack of culture! The third whammy was a last minute substitution on the German top board. Michael Geveke (who won an Harambee Quickplay in 1993 and has been an FM since 1986) "just happened" to be passing and sat down opposite Chris Hunt. This meant that the team was once more outgraded on every board, and battle commenced - grimly.

The games were pretty dour for the first two hours, then suddenly things hotted up. Hunt finished on Board One and went into post mortem. Both Steve and Bob Bagshaw were offered draws, Bob referring his back to Steve as captain. At this point the result on One wasn't known. If Chris had won, it might be best to take both draws, needing only a third to make the match safe. But both Chris Weeks and Bob Radford were under pressure, though with material advantage. As Hunt had in fact lost, the draws were declined and some serious thinking took place. In the end this paid off, as Steve won and Bob got his draw anyway. The other Chris and Bob both negated their opponents' attacks, and when Weeks forced a pawn through to queen, Radford had only to escape perpetual check to make his exchange up tell. In the end his opponent blundered, leaving Bristol winners by 3½-1½; a famous first victory on German soil.

Steve Boniface - Holger Bähre  
Bristol-Hannover 1994

1.e4 c6 2.d4 d5 3.exd5 cxd5 4.c4

The Panov Attack gives chances to both sides; also very thematic.

4...d6 5.dxc3 dxc6 6.dxf3 d4 7.dxe3 e6

A crucial decision; the bishop is not locked in, but the centre stays passive for Black. Bolder and probably better is 7...e5.

8.c5 ♖e7 9.♘b5 ♜c8 10.♗a4 ♕xf3  
11.gxf3

This is the price White's prepared to pay to maintain the pin. Anyway, his king isn't in danger and the g file will be useful later.

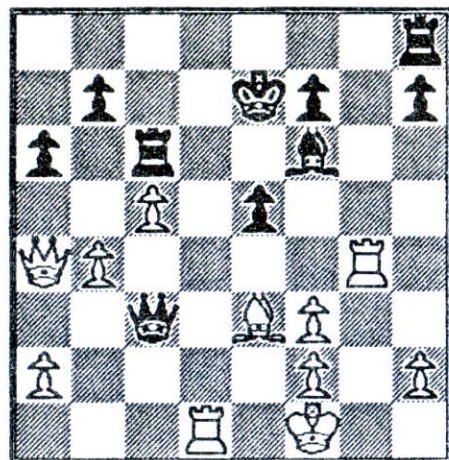
11...a6 12.♙xc6+ ♜xc6 13.b4 ♖d7  
14.♞g1 e5

Riskier now, but what else? Black will be strangled otherwise.

15.♙xd5 ♙xc5 16.dxc5 ♗xd5

Now the queen is alive, but this gives Black two active rooks v none.

17.♞d1 ♗c4 [17...♗xf3 18.b5 is big trouble.] 18.♞xg7 ♕f6 19.♞g4 ♗c3+  
20.♗f1 ♗e7



This solves some of the problems in Black's half of the board, but...

21.b5 axb5 22.♗xb5 ♞b8 23.♞c1 ♗a3  
24.♞a4 Plan B! 1-0.

Hannover were gracious losers. In the evening we went for a Turkish meal and then on to a pleasant pub with pool and darts and decent-sized glasses! Our victory had left us in a mellow mood, and we didn't even mind the very flexible rules used.

Monday was to be Revenge Day. We were taken by train and bus to the Steinhuden Meer, the biggest lake in Western Germany. "What do we do?" we asked. "Ride on a boat, or go rowing?" "No" was the answer - "you walk round it." Our initial trepidation was mollified somewhat when assured that there would be drinking establishments

along the way. This turned out to be economical with the truth and we were forced into scrumping pears, elderberries and some unripe hazelnuts to survive. Our host then offered a plant which we suspected might be Deadly Nightshade (thanks, 'Botany Bob' Bagshaw!) which we politely refused.

After nearly two hours foot slog, an Inn finally did appear out of the mist, but we were persuaded to go on to the next. "Only a little away..." It wasn't too far, but it was closed. By now mutiny was rife, and only our host's blood-written guarantee that the next one would not only be soon, but open, cheap and with food, prevented a Bounty-style insurrection. In less than a kilometre, a jolly little pub hove into view. We sank down gratefully overlooking the lake, a chilled lager in the hand...  
(to be continued)

### Chaplin shows his guts

The fifth one-day quickplay to be held at the Malcolm X Centre attracted 55 players. Once again there was much interest from outside Bristol, including Chris Dunworth, the 4NCL supremo. He was the hot favourite, but was frustrated by Bristol's rising star, Peter Chaplin, in a game of sheer guts and determination. Jerry Humphreys had a stunning day, winning his first five games, but was defeated by White in the last round.

1 Chris White *Twickenham* 5½/6; 2= Jerry Humphreys *Downend*, Peter Chaplin *Cleveland*, Chris Dunworth *Covent Garden*, Andy Nicholls *Grendel*, Roger Morgan *University* 5; 7 Derek Pugh *Grendel* 4½.

U-160: Devon Thomas *Harambee*, Ian-saing To, Ian Debbage *Thamesdown Juniors*, Mike White *Downend* 4.

U-136: Terry Marke *Cossham*, Leigh Debbage *Thamesdown Juniors* 4.

U-121: Mark Furneval *Grendel*, Richard Allen *Clifton* 4.

U-90: Oba Kofi *Harambee* 2½.

Juniors (under 12): 1 Simon Buckley *Opening Moves* 3½; 2 Matthew Brierley *Burnham-on-Sea* 3; 3 Adam Britton *Opening Moves* 2½.

Colin Axon

### Obituary

## Siegfried Helbig

**S**IEGFRIED HELBIG died very suddenly just before the start of this season at the age of 68. He started playing chess in school in Germany, and after he moved to this country he continued to play; at one time for Bath and, for the last fifteen years, for Keynsham. Together with his wife, Doreen, and son, Paul, the Helbigs became probably the best-known chess-playing family in the area.

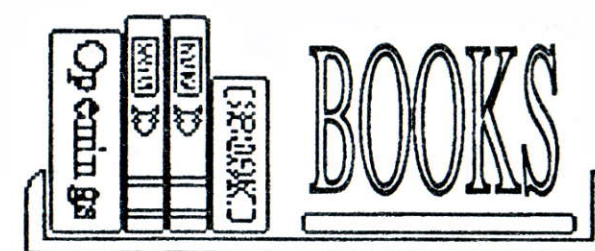
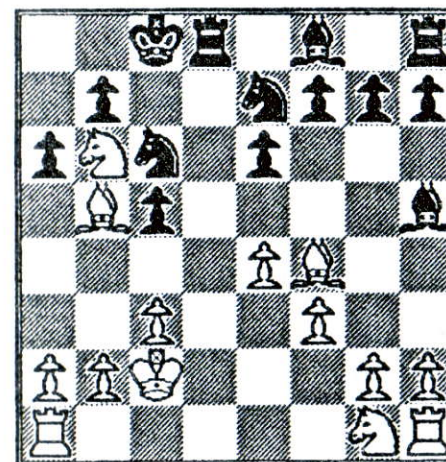
Siggy had many other sporting interests besides chess. He liked to walk, play squash and badminton. When he was about fifty, he took up long-distance running and completed two London Marathons - the last just six years ago.

Siggy played many games, but I'm sure he must have been particularly pleased with this effort, against a young player who would one day compete at the very highest level.

John Richards

Siegfried Helbig - Michael Adams  
Bristol Manor Tyres 1981

1.e4 c5 2.c3 d5 3.d3 dxe4 4.dxe4 ♗xd1+  
5.♙xd1 ♙c6 6.♙f4 ♙g4+ 7.f3 0-0-0+  
8.♗c2 ♙h5 9.♙d2 e6 10.♙b5 ♙ge7  
11.♙c4 a6?? 12.♙b6+ # 1-0



### THE COMPLETE SEMI-SLAV

Peter Wells

Batsford, £15.99

CHESS magazine ran an interview with Gary Lane last year which reminded us how tough it is for the itinerant English IM to make a living in his chosen profession. The IMs are very good players, of course, but not yet holding the status or rating points to make the financial playing field less uneven. The cynic might say that the lot of the average GM is not exactly a bed of roses either.

Chess authorship is one medium through which some IMs can grasp the opportunity to express themselves and to raise their profile. Certainly, Lane himself has established a notable reputation as an author whose books have a great deal to offer the club player. Witness also Ward's superb "Winning with the Dragon" published earlier this year. My point is that works by the IMs are well worth having a look at, as they are often well researched and presented. This effort by Peter Wells, his first major book, is a fine illustration of these standards; some two to three years in the writing, I would imagine.

Those of you who follow top-level chess will know that the Semi-Slav is the "hot" opening at the moment and the reasons for this are not hard to find. The basic position normally arises after 1 d4 d5 2 c4 c6 3 ♙f3 ♙f6 4 ♙c3 e6 when Black aims to play ...dxc4 on either move 5 or 6 depending on White's response. The imbalances created by this exchange, conceding the centre in return for expansion on the queen side, lead to sharp play and chances for both players.

The early books in the "Complete..." series adopted a format based, if I may borrow from Alan Williams, on a hierarchical progression; for example, variation B11123.



# JUNIOR CHESS

## Jerry Humphreys

Eleven year old Melanie Buckley is the latest hero of the Bristol Chess League. Melanie, graded just 95, was invited to represent Bristol in the Four Nations Chess League at Liverpool in September. Rather than being overawed by all the strong players present, she played a sensible game against her first opponent, graded 155, and managed to hold on until reaching an advantageous ending, which she won. Here is the famous game:

Melanie Buckley - P Garrett  
4NCL, Bristol-Barbican [8] 1994

1.e4 e5 2.♘f3 ♘c6 3.♘c3 ♘f6 4.♗c4  
♗c5 5.d3 d6 6.♗g5 ♘a5 7.♗b3 c6 8.d4  
exd4 9.♘xd4 h6 10.♗h4 ♘xb3 11.axb3  
0-0 12.f3 ♗e8 13.♘de2 b5 14.♗d2 a5  
15.♗d1 ♗a6 16.♗a1 d5 17.♗d1 ♗a7  
18.♗f2 ♗xf2+ 19.♗xf2 b4 20.♘a4 ♗xe4  
21.♗he1 ♗ae7 22.♘g3 ♗xe1 23.♗xe1  
♗c7 24.♗xe7 ♗xe7 25.♗e3 ♗xe3+  
26.♗xe3 ♘d7 27.♗d4 g6 28.♘c5 ♗c8  
29.♘d7 ♗xd7 30.♗c5 ♗f8 31.♗b6 ♗e7  
32.♗xa5 c5 33.♗b6 ♗d6 Black has  
thrown away his pawn advantage and now  
stands a lot worse. 34.c3 bxc3 35.bxc3  
♗f5? 36.♘f5+ gxf5 37.♗b5 h5 38.g3 d4  
Zugzwang is unavoidable. 39.cxd4 cxd4  
40.♗c4 ♗e5 41.b4 f4 42.b5 fxc3 43.hxc3  
f5 44.b6 ♗d6 45.♗xd4 f4 46.gxf4 h4  
47.♗e3 ♗c6 48.♗f2 [48.f5!] 48...♗xb6  
49.♗g2 ♗c6 50.♗h3 ♗d6 51.♗xh4 ♗e6  
52.♗g5 ♗f7 53.♗f5 ♗f8 54.♗f6 1-0

## Marlwood Tournament

The Marlwood schools' tournament was held on 15th/16th October, and attracted 37 teams, totalling 444 players. Overall winners were Royal Grammar School, Guildford, with a total of 40½ out of a possible 60 points. The tournament had two qualifying rounds, after which teams were sorted into four sections - Championship, Major, Inter-

mediate and Minor. Bristol teams were Marlwood A, who reached the Major and came 4th, and in the Minor Henbury were 3rd, Clifton College 6th and Marlwood B 7th. Local players William Cowley, Nigel Carter, Ian Tolley and Neil Harris won board prizes. Bravest player of the tournament was Marlwood B's board 1 Nick Williams, graded 86, who had to play both Harriet Hunt (209) and Mark Ferguson (214) in successive rounds and finished on 1/7, winning against Somerset's Nick Timms.

## Tournament Results

The prestigious Trinity Quickplay was held on the same weekend as Marlwood, and so only two Bristol juniors played. Peter Chaplin had a shock win against League Champion Roy Phillips, and drew against Graham Copeland, finishing on 3½/6, and Oliver Bright scored 1½. Peter scored a major victory the next week, when he beat 219 grade Chris Dunworth at the Harambee Quickplay, going on to score 5/6 for second place. At the Boumside junior tournament in Cheltenham, Downend players Robert Pritchard and Neil Pearce, and Keynsham players Adam Britton and Simon and Sam Buckley all won prizes, while on the same day Melanie Buckley won the Girls' Under 17 at Basingstoke, Esther Britton winning the Under 7.

## Opening Moves

Opening Moves Chess Club has closed until next year, due to the fact that the current organisers no longer have the time to run the club. The club is looking for new premises, and hopes to restart in January, under new management. A circular will be sent to all existing members, as well as to League clubs, when full details are known. The Opening Moves teams in the Junior League will continue to play their matches as normal.

## International News

Late news from the the British Championships - Oliver Bright's score of 3½/7 was against such strong opposition that he has been invited to join the British Under 12 squad. The squad will be selecting players in the New Year for international matches next Spring.

## Results

All results received by the Match Secretary up to 26th October are included.

A = adjudication; C = continuation.

KO Round 1: Nailsea 1½ Grendel 6½; Yate 1 South Bristol 7; Cossham 4½ Hanham 3½; Clevedon 2½ Bath 5½.

Division 1: Hanham A 2 Bath 3 (2C); Clifton B 1½ South Bristol A 4½; Grendel A 4 Clifton A 2; Horfield A 1½ Hanham A 2½ (2C); Bath 3½ Downend A 1½ (1C); Grendel A 4½ South Bristol A 1½; Hanham A 0 Downend A 2 (4C); Clifton A 3 Clifton B 3; Downend A 1½ Grendel A 3½ (1A); Clifton A 2 Bath 1 (2A,1C); University A 2 Horfield A 3 (1C); Grendel A 4 Hanham A 2; South Bristol A 1 Clifton A 4 (1C); Bath 3½ University A ½ (2A); Clifton B 1½ Horfield A 1½ (3C); Grendel A 3½ Bath 2½; Horfield A 1½ South Bristol A 1½ (3C).

Division 2: Nailsea A 1 Cossham A 4 (1A); Thornbury A 2½ Grendel B 3½; South Bristol B 3½ Clevedon A 2½; South Bristol B 2½ Horfield B 2½ (1A); Sun Life A 4½ Nailsea A 1½; Cossham B 2½ Clevedon A 3½; Thornbury A 2½ Nailsea A 1½ (2A); Grendel B 2½ South Bristol B 2½ (1A); Sun Life A 0 Horfield B 6; Cossham B ½ Cossham A 5½; University B 3 Nailsea A 3; Horfield B 3 Cossham A 3; South Bristol B 3 Thornbury A 3; Sun Life A 2 Cossham B 4; Clevedon A 3½ Grendel B 1½ (1A); Grendel B 4½ Cossham B ½ (1A); Sun Life A ½ Clevedon A 5½; Cossham A 3 University B 3.

Division 3: Downend B 4 Clifton C 2; Thornbury B 1½ Grendel C 4½; Cossham C 2 Keynsham A 4; Nailsea B 1½ Thornbury B 4½; Clifton C 3½ Hanham B 2½; Clevedon B 3 Cossham C 3; Nailsea B 5 Clevedon B 1; Keynsham A 4 Hanham B 2; Clifton C 3½ Grendel C 2½; Downend B 3½ Keynsham A 2½; Thornbury B 5 Cossham C 1; Grendel C 5 Keynsham A 1; Hanham B 3 Thornbury B 3; University C 3 Clevedon B 3; Cossham C 2½ Downend B 3½; Nailsea B 3½ University C 2½; Downend B 3½ Hanham B 2½; Clevedon B 1½ Grendel C 4½.

Division 4: Keynsham B 4 Clifton D 2; Harambee A 2 Downend C 4; Hanham C 3½ Nailsea C 2½; Thornbury C 2½ South Bristol C 3½; Harambee A 2 Bristol Cabot A 3 (1A); Downend C 1 Keynsham B 5; Horfield C 4 Thornbury C 2; Bristol Cabot A 2 Clifton D 4; Nailsea C 2 Harambee A 4; Hanham C 2½ Horfield C 3½; South Bristol C 2½ Bristol Cabot A 3½; Keynsham B 3½ Hanham C 2½; Thornbury C 3½ Downend C 2½; Clifton D 3½ Harambee A 1½ (1A); Harambee A 2½ Keynsham B 3½; Bristol Cabot A 2 Hanham C 3 (1A).

Division 5: Grendel E 2 Grendel D 4; Sea Mills 5 Sun Life B 1; Clevedon C 4 Bristol Cabot B 2; Nailsea D 1 Sea Mills 5; Grendel D 4 Horfield D 2; Civil Service 4½ Clevedon C 1½; Nailsea D 4½ Civil Service 1½; Bristol Cabot B 2 Horfield D 4; Sea Mills 4 Grendel E 2; Clevedon C 3 Sun Life B 3; Grendel D 6 Civil Service 0; Horfield D 3½ Grendel E 2½; Sun Life B 3 Bristol Cabot B 2 (1A); Horfield D 2 University E 4; Bristol Cabot B 3½ Nailsea D 2½; Sea Mills 4 University D 2; Clevedon C 6 Grendel E 0; Nailsea D 3 Grendel D 3; Horfield D 4 Sun Life B 2; University E 3 University D 2 (1A); Civil Service 4 Grendel E 2; Grendel D 3 Sea Mills 3.

Division 6: Grendel G 1½ Keynsham C 4½; Nailsea E 2½ Yate B 3½; Grendel F 3 Harambee B 3; Hanham D ½ Downend D 5½; Yate A 3 Downend E 3; Downend D 4 Grendel F 2; Keynsham C 4½ Harambee B 1½; Clifton E 2 Downend E 4; Downend E 4½ Grendel G 1½; Hanham D 3 Yate B 3; Yate A 5 Nailsea E 1; Clifton E 4 GE 2; Grendel G 5 Nailsea E 1; Downend D 4 Downend E 2; Keynsham C 6 Grendel F 0; Harambee B 5 Hanham D 1; Grendel G 6 Yate B 0; Nailsea E ½ Downend D 5½; Downend E 0 Keynsham C 6; Grendel F 2½ GE 2½ (1A); Harambee B 4 Clifton E 2; Downend D 3½ Clifton E 2½; Hanham D 5½ Nailsea E ½; Yate B 2 Grendel F 4.

## WANTED!

Volunteers to help out at *Opening Moves* when it reopens in January at a new venue.

*Opening Moves* is the club in Bristol dedicated to the under-14's. Help is required with both coaching and administration on an occasional but regular basis.

*Opening Moves* has bred a number of British Junior Champions as well as generally strengthening junior chess in Bristol Let's keep it up!

Phone Jerry Humphreys on Bristol (0117) 965 0097 for an informal chat.

## Bristol Fantasy Chess

### BRISTOL FANTASY CHESS

Mike Wood's Grumbalds Ash are the first leaders of the Fantasy League. His team (Beaumont, Eyley, Osborne, Boyce, White and Richards) has got off to a flying start. In second place is the BCT Editor's team, Blackburne Rovers, with a similar line-up (Brigden, Eyley, Osborne, Boyce, Rudd and Richards).

Martyn Sellars, the Fantasy League's Secretary says managers near the bottom of the table should not despair. "It's early days; some players have a number of unfinished games already and it could all change by Christmas, which is when the transfer market opens and full players' results will be available."

Thirty teams are in the first ever chess fantasy league, competing for a first prize of £50.

Team	Manager	Pts
Grumbalds Ash	M Wood	139
Blackburne Rovers	J Richards	129
Class Act	M Brigden	124
The Hatchet Men	C Axon	121
Chessasy	M Dear	115
The Mysterious Rooks	D Pugh	112
Wessex	H J Draisey	108
Simple Minds	M Brigden	107
Crewsers	B Crewe	106
Clifton Sec's Stars	P Bissicks	104
Swindler's List	R Phillips	102
The Chippendales	P Butterworth	101
C J Strollers	C Jones	93
Northavon Nomads	J G Milton	91
Anonymous	J Humphreys	90
Arkle	R Gage	87
Dead Moon	SS Sandhu	87
Babylon 6	J Edwards	86
Morphy's Marauders	M Furnevall	85
Bigheads	I Biddick	80
The Bishop Bashers	G Mobbs	75
Rook Fianchettoes	A Camilleri	72
Ronan's Six	G Thomson	70
Oddballs	J Paines	67
Justintimers	I Pickup	65
64 of Them	J Levine	62
C8 my Hamster	C Beaumont	62
Annie's Angels	N Palmer	60
Friends of Kamsky	J Richards	54
Caissa	R N Allen	53

Team	Pld	Player	Grd	Pts
Clifton A	4	Boyce	163	18
		Collier	180	9
		Cooper	192	13
		Harris	164	15
Clifton B	3	Haydon	199	0
		O'Byrne	143	22
		Baker	165	14
		Furmston	165	0
		Grossett	131	19
		Jones C	180	10
		Pearce	165E	-2
Horfield A	3	Tiplady	175E	-4
		Davies	166	9
		Dilleigh	182	6
		Easton	187	-1
		Nendick	166	9
		Richards	154	24
		Sellars	171	13
Down'nd A	3	Binks	206	4
		Brigden	176	2
		Humphreys	179	14
		Mordue	204	1
		Oldfield	165E	11
		White	158	10
		Grendel A	5	Carter
Hanham A	4	Clarke	166	15
		Osborne	170	48
		Phillips	199	19
		Pugh	174	42
		Will	174	26
		Beaumont	212	13
		Biddick	136	3
		Bradley	164	5
		Crockett	161	8
		Palmer	135	-3
S B'tol A	3	Summerill	134	19
		Brooks	157	0
		Jones D	150	9
		Lock	162	1
		Rudd	192	11
		Stone	153	2
		Weeks	164	10
Univ A	2	Ansell	205	8
		Simpson	190	0
		Hong	172	4
		Hunt	174	-3
		Appleton	171	21
Bath	5	Buckley	214	30
		Eyley	188	26
		Gregory A	119	18
		Gregory R	147	25
		Helbig	193	0
		Ledbury	141	8
		O'Mahoney	159	-2

## BOOKS

### THE COMPLETE SEMI-SLAV

*continued from page 19*

This approach has severe limitations as a learning tool and these books will have to be rewritten if they are to have any appeal to club players. Thankfully, recent "Complete..." books have been structured on a series of real flesh and bone games. Apart from providing relief for the student, this method lends itself more readily to working with the additional analysis and provides scope for the author to add explanatory comments.

The backbone of the book comprises 37 complete games and the material is spread evenly between the razor-sharp Botvinnik system, the Meran and ♗c2/others. As we

have come to expect, the layout and quality of typesetting are excellent.

I hope the lower-rated players amongst us will forgive me, but this book will probably serve best those rated above 160, given the complexity of the Semi-Slav and the demands it makes on tactical astuteness. If you are really serious about taking this opening into your repertoire, this book is for you - but be prepared for some hard work over a period of a year or two if you want to reap a dividend. At today's prices, good value at £15.99. All in all, an outstanding work of reference.

Martyn Sellars

## League Tables

includes resolved matches up to 26th October.

### Division 1

	Pld	DP	Pts
Grendel A	5	-	10
Bath	3	-	4
Clifton A	3	2	3
Horfield A	1	-	2
South Bristol A	3	-	2
Clifton B	2	1	1
Hanham A	1	-	0
Downend A	2	-	0
University A	2	-	0
Horfield B withdrew.			

### Division 2

	Pld	DP	Pts
Clevedon A	4	-	6
Cossham A	4	-	6
Grendel B	3	1	4
Horfield B	2	-	3
South Bristol B	2	-	3
University B	2	-	2
Cossham B	4	-	2
Sun Life A	4	-	2
Thornbury A	2	-	1
Nailsea A	3	-	1

### Division 3

	Pld	DP	Pts
Downend B	4	-	8
Grendel C	4	-	6
Thornbury B	4	-	5
Clifton C	3	1	4
Nailsea B	3	-	4
Keynsham A	4	-	4
Clevedon B	4	-	2
University C	2	1	1
Cossham C	4	-	1
Hanham B	4	4	1

### Division 4

	Pld	DP	Pts
Keynsham B	4	-	8
Horfield C	3	-	6
Clifton D	3	1	4
Bristol Cabot A	2	1	2
South Bristol C	2	-	2
Downend C	3	-	2
Thornbury C	3	-	2
Hanham C	3	1	2
Harambee A	4	1	2
Nailsea C	3	-	0

### Division 5

	Pld	DP	Pts
Sea Mills & LW	5	-	9
Grendel D	5	-	8
Clevedon C	4	1	5
Horfield D	5	4	6
Civil Service	4	-	4
Nailsea D	4	-	3
University E	1	-	2
Bristol Cabot B	3	3	2
Sun Life B	3	3	1
University E	1	-	0
Grendel E	5	27	-2

### Division 6

	Pld	DP	Pts
Downend D	5	-	10
Keynsham C	4	-	8
Harambee B	4	1	5
Downend E	5	-	5
Grendel G	4	3	4
Yate & S A	2	-	3
Hanham D	4	-	3
Yate & S B	4	-	3
Grendel F	4	4	3
Clifton E	4	1	2
GE	1	1	0
Nailsea E	5	5	0

DP = Default Penalty Points. One league point has been deducted for every ten DPs.

## League Notices

HORFIELD B has been withdrawn from Division 1! The C, D, E teams are renamed to B, C, D. All fixtures remain the same. Jim Draisey has moved upwards after many years as Horfield Secretary and become the club's President. His old job has been taken over by Gordon Breeze, (01454) 615397.

Bristol Royals and Cabot have merged and become BRISTOL CABOT. The old Royals team in Division 4 becomes Bristol Cabot A and will play all its home fixtures on the Wednesday two days before the date in the fixture books. Bristol Cabot will play the KO matches originally allocated to Royals. Horfield, in the KO, and Harambee, Minor KO, now get byes and can stay in and watch the telly instead on those nights. Bristol Cabot's new Secretary is Tony Sarkozi, (0117) 951 1744.

YATE & SODBURY now play at the Royal Oak, 81 Broad Street, Chipping Sodbury.

BATH have also moved: 6th Form Centre, Holbeche Centre, King Edward's School, North Road, Bath. Shame, I liked the St James' Wines Vaults.

GRENDDEL's new Secretary has a strangely familiar name: Chris Crater, (0117) 924 5443.

## Chess and Blood

*continued from page 7*

Bishops on open diagonals. The queen centralised. The opposing king trapped. Checkmate! Piece play ... at its best!'

So it can be done - in fact it saves space, and therefore paper, and therefore reduces the cost of the book.

*Should* it be done? In a word, Yes. If we want to introduce new players to chess surely we should appeal to all types: boys and girls, rich and poor, white and black ... and not just the mainly male, mainly white, mainly middle-class youngsters we currently attract.

Sorry, I should have said youngsters *and* oldsters. That's the trouble with bias - you never know when you're doing it.

## A reproduction of *Bristol Chess Times No 1* can be yours.

A limited number of copies of the first issue (on A4 instead of foolscap) are available.

Send £2 (includes postage & packing) to:

Bristol Chess Times, 7 Maycliffe Park, Bristol, BS6 5JH.

Make cheques payable to the 'Bristol & District Chess League'. Allow 21 days for delivery.

## Diary

*Use this column to advertise your events. It's free, but please send your entries in plenty of time to the Editor.*

Nov 4-6. BRISTOL: 7th HANHAM Congress. Ian Biddick 0272 863568.

Nov 12. Edgware Open Rapidplay. Adam Raof 081 202 0982.

Nov 14. BRISTOL: 2nd GRENDDEL Evening 10 Minute Chess Challenge. 7:30pm start; late entries until 7pm. Chris Carter 0272 245443.

Nov 18-20. 29th TORBAY Congress. P Short 0803 214766.

Nov 26-27. 4NCL, CHELTENHAM. Support our team! Roy Phillips 0272 266555.

Dec 3. Edgware U-150 Rapidplay. Adam Raof. 1995

Jan 21. Golders Green Open Rapidplay. Adam Raof.

Jan 21-22. 4NCL, CARDIFF. Roy Phillips 0272 266555.

Feb 3-5. BRISTOL League Congress, Students' Union, Queen's Road.

Feb 18-19. 4NCL.

Mar 4. BRISTOL League Quickplay, Students' Union, Queen's Road.

Mar 18-19. 4NCL.

May 20-21. 4NCL.

May 24. BRISTOL League AGM. Students' Union, Queen's Road.