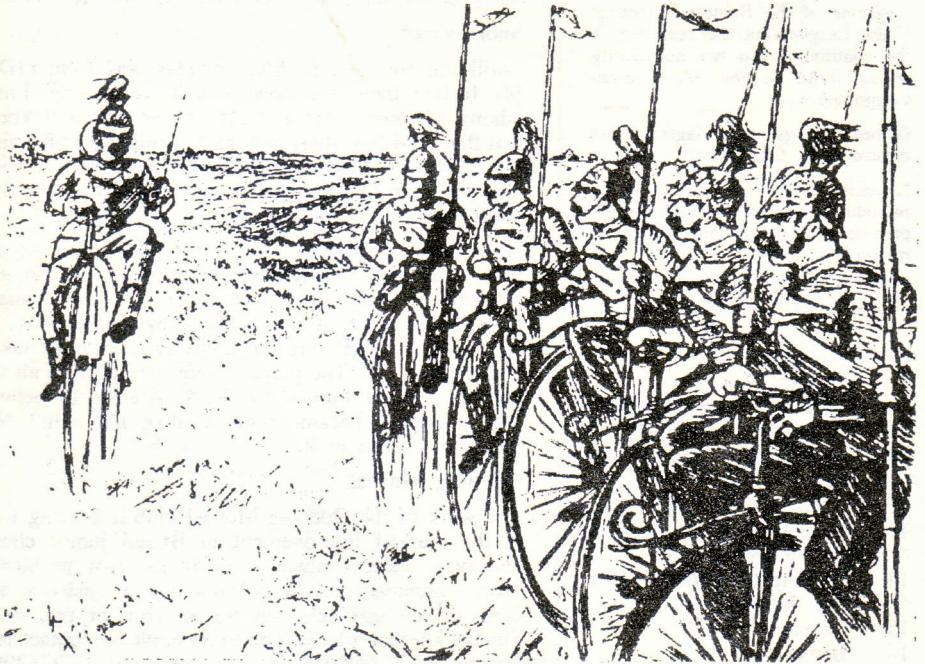


No: 96, January 1994

Bristol CHESS TIMES

The Magazine of the Bristol & District Chess League

80p



"Okay, so who decided we should try a more environmentally-friendly means of getting to away matches?"

Bristol CHESS TIMES

Editor: John Richards
7 Maycliff Park, Bristol,
BS6 5JH. Tel: 0272 551912

Subscriptions: £8.00 for ten issues (posted to a home address) or £6.00 for ten issues (collected from a Bristol League club). Send cheques payable to the Bristol & District Chess League to the Editor.

Printed by: Everest, 195 Cheltenham Road, Bristol BS6 5XQ

Advertising: rates are available on request from the Editor.

Bristol Chess Times is the official magazine of the Bristol & District Chess League, but the opinions of the contributors do not necessarily reflect those of the Management Committee.

Games listings and diagrams are created using ChessBase.

No parts of this magazine may be reproduced without the prior express permission of the League. All rights reserved. © 1994.

CONTENTS

- 2 Editorial
- 3 Junior Chess
- 4 Obituary - Alan Ashby
- 8 Letter from Hannover
- 10 The Famous Four strike forth
- 12 Hanham Congress
- 13 League Congress Section One games
- 14 Grading corrections, Torbay, Keene
- 15 Letters
- 16 Books
- 18 Results
- 19 League tables
- 20 National League and cups
- 20 KO Cup draw
- 20 Diary

Next issue: 7th March. Please send in articles, news, etc. for the next issue by 18th February.

EDITORIAL

The good bits of '93

No one needs reminding that 1993 was the year a Briton qualified to play the World Champion (careful wording there). The publicity, especially the television coverage, resulted in a mini-boom in membership.

It was the year when a Bristol student, Michael Hennigan, won the British Championship. Clifton were beaten finalists in the National Club, and Sun Life went one better by winning the National Minor.

Michael Adams had a good year; he won some big money tournaments, qualified from the FIDE interzonal and, as we go to press, looks like qualifying from the PCA event in Groningen. Also Adams was voted Player of the Year by BCF members, presumably because many could not bring themselves to vote for Short.

Short shrift

I still can not condone Short's breakaway from FIDE. My feeling then, and now, was it was wrong. From talking to some GMs and IMs at the match, I know that they also felt Short had made a mistake in forming the PCA with Kasparov. However, it was not a good idea for them to speak out if they hoped to make any money out of the match by commentating, etc.

Now Short is attacking those top players for saying they could not wholeheartedly support him in the Kasparov match. Short's explanation (see January CHESS) for their attitude is that they are "jealous" of his success! I can't believe Short expects to be taken seriously on this. The players were backing him all the way until Short formed the PCA. Are we to believe they suddenly became jealous after the split? No, there's no sense in it.

Opening Moves!

The work of the Opening Moves! club is bearing fruit in the marked improvement in Bristol junior chess. However, success always breeds its own problems. More volunteers would be welcome to assist at the club. If you can help out for an hour or two on a Sunday afternoon from time to time, please contact Iain Bourne (0272 668964) or Jane Norton (0272 776390).

Artist wanted

I am looking for someone to contribute occasional line drawings, cartoons, etc. to the magazine. By the way, I still need your articles, reviews, letters so that I can produce the next issue.

John Richards



JUNIOR CHESS

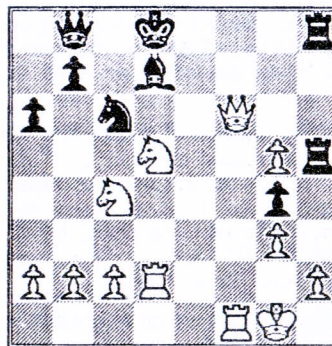
Jerry Humphreys

This month's game was sent in by Keynsham's strongest junior, 15 year old Matthew Look. It was played in the second division of the League, and is unusual in that Black chose to attack on the kingside in a Sicilian Defence. However, he allowed White to open the f-file, and obtain a powerful central counter-attack.

M Look - G Miller

Keynsham A - South Bristol B 1993

1.e4 c5 2.♘f3 d6 3.d4 cxd4 4.♗xd4 ♕f6
5.♕c3 a6 6.♗e3 e6 7.♗e2 ♗e7 8.f4 ♖c7
9.0-0 ♗d7 10.♖e1 ♕c6 11.♖g3 0-0-0
12.♖f2 ♗dg8 13.♕b3 ♗d8 14.♕d2 h5
15.♕c4 ♕g4 16.♗xg4 hxg4 17.♗ad1
♗e7 18.♗d2 ♗h5 19.♗b6 ♖b8 20.g3 g5
21.fxg5 ♗gh8 22.♖xf7 d5 23.exd5 exd5
24.♗xd5 ♗d8 25.♗xd8 ♖xd8 26.♖f6+
1-0



Tournament Results

The Hanham Congress is one of the major annual chess events in Bristol, and this year six local juniors were among the 200-odd entrants. In the Under 140 section Peter Chaplin (Clevedon) scored 3½/5 and Matthew Look (Keynsham) 2½, while there was great success for our younger players in the

Under 110 section. Twelve year old David Buckley, in his first ever tournament, won the section with 4½, and Oliver Bright (Keynsham) came third with 4. David had to be satisfied with the grading prize, however, as the rules of the tournament do not allow ungraded players to receive main prizes in the Minor. Also playing were Matthew Parker (2½) and Tom Bourne (1½).

There were three tournaments over the weekend of the 10th-12th December. Eleven Bristol juniors played at the Stroud quick-play, with Carl Bicknell (Horfield) scoring 3½/6 in the Under 160, and Matthew Parker (Hanham) achieving 4/6 in the Under 100. In the Somerset Junior Championships, Tom Lyon scored 5½/7 in the Under 12 section, and David Buckley scored 3/5 in the Under 14. Matthew Look beat Peter Chaplin in the final round to win the Under 16 title. Meanwhile in London 9 year old Matthew Lyon scored 3½/7 in the London Under 10 Championships, but was one point short of qualification for the Under 12 event at the end of December.

East Wales Challenge Match

The East Wales Juniors challenged Bristol to a match in December, with fourteen Under 14 players and eleven Under 12 players on each side. Each player played one game with a long time limit and one quickplay game, against different opponents. Bristol were heavily outgraded in the Under 14s, but drew the first round and lost 4½-9½ in the second. The Under 12s produced an excellent result, scoring 8-3 in the first round and 9½-1½ in the second. This team was composed entirely of *Opening Moves!* players, which shows the benefit to the players of regular coaching and organised competitions.

Junior League

The Bristol Junior League has moved to a new venue. After a number of years at Cotham Grammar it will be playing at Clifton College from the New Year. The new venue is at the Coulsdon Centre, in College Road (next to the zoo). Marlwood School are currently leading the League, with an unbroken record, and are hoping to repeat last year's successes in the League and the Knock-out.

Obituary

Alan Ashby

ALAN ASHBY died this Autumn, at possibly one of the happiest times of his life.

Alan came to Bristol in the seventies, and quickly established himself as Bristol's number one chess player, and a great servant of the local chess scene in many ways. When work interrupted chess, he was a technical journalist.

For the number one to be likeable is a bonus in any walk of life. Alan was a gentle, sympathetic man with a wonderful sense of humour, albeit a little dry and downbeat.

He was excellent company in any post-game bar party. He had a very creative imagination, and as the evening progressed he would frequently fire wacky ideas into the conversation, and the rest of us would have to keep up.

In his early Bristol years I also spent much time with him walking across town, talking politics, philosophy and religion, and it was particularly then that this quiet, sociable person revealed his other persona - the one with a burning, almost bitter, sense of the injustices of life, mollified only by a love and passion for nobler people, places and ideas.

It was this side of Alan's character that sometimes took him into difficult confrontations with establishment and authority.

But most of us will remember the laid-back Alan. I think this was the essence of his chess style, although my own personal experience is limited to two rather one-sided defeats.

Alan invested a great deal of his life energy in chess and chessplayers, a fact that was clear from the large turnout of chess friends at his funeral.

Alan developed mental illness some years ago. His illness took him into hospital for several periods. In between, he would

normally return to his lovable self, but sometimes to a very insecure and uncharacteristically aggressive lost soul. This unhappy state was compounded by an unsuccessful work excursion to Milton Keynes.

The chess world did not, and I think perhaps could not, serve him as well as it might during this time. I know I was not alone in feeling estranged and helpless on the sidelines.

Do we really know any of the many chessplayers in Bristol who we spend so many happy hours with? Or rather, do we know them well enough to help them in their life beyond the chess club? After all, most of us play chess as an escape, as a world of cool and calm head-space away from the contradictions and disappointments of our other lives. Alan knew this as well as anyone, continuing to play and enjoy excellent chess throughout his illness.

Everybody has difficulty talking about and coming to terms with mental illness, but chessplayers perhaps more than most, because on the whole I think we are closer to the edge. As one of Alan's peers said at his funeral, "There but for the grace of God go I".

The last six months of Alan's life were a glorious rebirth and affirmation of life. He had met and fallen in love with Janet, and they had decided to set up house and life together, a life of great plans, hopes and expectations. For starters, Alan had an excellent new job in London.

That Alan's life should be so positive at the end is only fitting, because Alan was one of the good guys.

Alan Williams

Jack Beard writes:

Alan Ashby succeeded the late Cyril Welch to become only the second honorary adjudicator in the forty year history of the

Bristol & District Junior Chess Association.

The most remarkable thing about Alan's decisions was the speed they were returned, as most results were back within a week; a fact greatly appreciated by the players involved.

Adjudications were not Alan's only involvement with the Association. Before we lost the use of Great George Street (of happy memory), he set up a coaching class which was a novel experience for all taking part who learned a lot from Alan and his team.

The Association has lost a great friend and valued colleague who will be greatly missed by all who knew him.

Frank Palm (Hannover) writes:

When I got the sad news I was first shocked, then felt deep grief at having lost someone I was always pleased to meet but neglected to deepen the contact.

Alan was a convinced supporter of the Bristol/Hannover twinning, and he liked not only the chess exchange but our town as well. He has got many friends from the Hannover chess scene, especially his former hosts, guests, and opponents still feel much empathy for him. Each time when I was looking for hosts or travellers for the Exchange, many asked me "Will Alan come too?". And I could only answer: "Don't know, perhaps this time, perhaps next." Now there will be no more next time. And I feel I should have written to him some time, or at least had a talk with him more often. Too late.

John Richards writes:

Alan was a chess journalist as well as a strong player. His articles were always well written and a joy to read. His last article for BCT was on his seven best games (BCT 89, 90 and 91). Not wishing to repeat those wonderful games so soon, I asked around and David Woodruff supplied me with some notes and more examples of his talent. A game from the West of England Championship in 1978. Notes by Dave LeMoir.

Alan Ashby - AJ Berry
WECU Championship 1978

1.e4 e5 2.♖f3 ♕f6 3.d4 exd4 4.e5 ♕e4

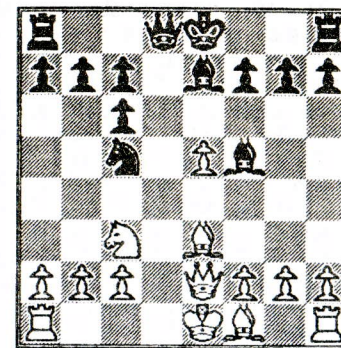
5.♞e2 Better is 5.♞xd4 d5 6.exd6 ♖xd6.

5...♕c5 This almost deserves a question mark. Better is 5...♖b4+ 6.♞d1 alternatives are worse! 6...d5 7.exd6 f5 with powerful play for Black.

6.♖xd4 ♕c6 7.♖xc6 dxc6

I prefer bxc6 with ♖a6 (threatening a bishop exchange to relieve the position) or ♞h4-e4 as ideas.

8.♕c3 ♖f5 9.♖e3 ♖e7



10.g4 A nasty shock, highlighting the few good squares Black has for his pieces.

10...♖e6 11.♞d1 ♞c8 12.♞g1 0-0 13.f4 b5 14.f5 ♖h4+ 15.♞d2 ♖c4 16.♞f3 ♖xf1 17.♞dxfl b4 18.♖xc5

18.♕e2 I feel is even stronger, denying Black any notion of counterplay. 18...♞d7 19.♖f4 ♖d8 (19...♞e8 20.g5! and ♞h5 winning a piece.) 20.g5 and f6 etc.

18...bxc3+ 19.♞c1 ♞a6 20.♞b1 ♞b5 21.♞xc3 ♞fe8 22.g5 ♞e2 23.e6 ♖xg5

23...fxe6 24.f6! also wins quickly.

24.exf7+ ♞xf7 25.♞b3+ ♞f6 26.♖d4+ ♞e7 27.♞e1 1-0.

Alan won the West of England Championship in 1978, and took his place in the British Championships that year in Ayr.

He scored 5½/11 (+3 =5 -3) and finished equal 19th with such famous names as George Botterill, D Rumens, and Andrew Whiteley. Also 19th was W A Linton, then of Tooting, who played for Sun Life in the Bristol League last year.

Alan scored his wins against Nigel Povah, Stuart Milner-Barry and Glenn Flear. He drew against Robert Bellin and Brian Eley among others. He lost to Paul Littlewood, P A Garbutt and Jeff Horner.

Two of his wins:

Nigel Povah - Alan Ashby
British Championship 1978

1.e4 c5 2.♘f3 e6 3.d4 cxd4 4.♘xd4 a6
5.♗d3 ♖c6 6.♗xc6 bxc6 7.0-0 ♗e7 8.b3
♙g6 9.♗b2 ♗c7 10.♗h5 ♗b7 11.♗d2
♗f4 12.♗e5 ♗xh5 13.♗xc7 ♗c8 14.♗e5
f6 15.♗e2 fxe5+ 16.♗xh5+ g6 17.♗e2 ♗d6
18.♗fd1 ♗e7 19.b4 ♗b8 20.a3 ♗c7
21.♗b3 d6 22.c4 c5 23.f3 ♗c6 24.♗d3
cxb4 25.axb4 ♗xb4 26.♗xa6 ♗a4
27.♗a7 ♗c8 28.c5 ♗e8 29.♗xa4 ♗xa4
30.cxd6 ♗b6+ 31.♗f1 ♗d7 32.♗d1 ♗b4
33.♗c1 ♗b1 34.♗d3 ♗xd1+ 35.♗xd1
♗xd6 36.♗e2 ♗a8 37.f4 ♗a2+ 38.♗f3
exf4 39.e5+ ♗d7 40.♗xf4 ♗f2+ 41.♗g3
♗d2 42.♗b3 g5 43.♗xe6+ ♗e7 44.♗d5+
♗xe6 45.♗xb6 ♗d4 46.♗c8 ♗xe5+
47.♗e7 ♗c4 48.♗g8 0-1.

Glenn Flear - Alan Ashby
British Championship 1978

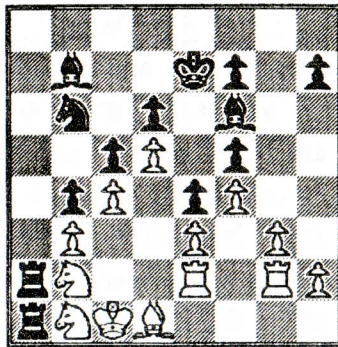
1.d4 ♗f6 2.c4 c5 3.d5 e6 4.♗c3 exd5
5.cxd5 d6 6.e4 g6 7.♗f3 ♗g7 8.♗g5 h6
9.♗h4 a6 10.♗d2 b5 11.♗e2 0-0 12.♗c2
♗e8 13.0-0 ♗a7 14.a4 b4 15.♗d1 g5
16.♗g3 ♗ae7 17.♗d3 ♗h5 18.♗e3 ♗d4
19.♗ae1 ♗f4 20.♗ec4 f5 21.♗xf4 gxf4
22.♗f3 ♗b7 23.♗xd4 cxd4 24.♗e2 f3
25.♗ee1 fxe2 26.♗xg2 fxe4 27.♗xe4
♗xe4 28.♗xe4 ♗xe4 29.f3 ♗e7 30.♗h1
♗g7 31.♗e4 ♗g5 0-1.

Here is a game from the West of England, three years later. Notes by Dave LeMoir.

D Farndon - Alan Ashby
WECU Championship 1981

1.d4 ♗f6 2.♗g5 c5 3.♗xf6 gxf6 4.d5 f5
5.♗f3 ♗g7 6.c3 ♗b6 7.♗d2 ♗f6 8.♗a3
a6 9.♗g5 b5 10.♗xf6 ♗xf6 11.0-0 e5
12.e3 d6 13.c4 b4 14.♗b1 ♗d7 15.♗g1
♗b6 16.f4 e4 17.g3 a5 18.♗h3 ♗a6 19.b3
a4 20.♗f2 axb3 21.axb3 ♗c8 22.♗d2
♗a1 23.♗d1 ♗d7 24.♗e2 ♗e7 25.♗b2
♗c3 26.♗c2 ♗ha8 27.♗d1 ♗c8 28.♗e2
♗a2 29.♗g1 ♗a6 30.♗gg2 ♗b7
31.♗gf2 ♗f6 32.♗g2

The story so far... After Black's accurate opening play, White lost the initiative and allowed his opponent to tie him down completely. After probing for errors, Ashby decides that the only way through is to create some passed pawns by a piece sacrifice. By means of the lovely combination that follows he manages to gain three pawns of great mobility for his piece.



32...♗xd5! 33.cxd5 ♗xd5 34.♗a4

If 34.♗c4 simplest is ♗xb1+! 35.♗xb1
♗c3+ 36.♗c1 ♗a1+ 37.♗c2 ♗xd1 with
two pawns and a dominating position for the
exchange.

34...♗xa4!! 35.bxa4 ♗c3 36.♗b2

If 36.♗c2 b3! and if 36.♗d2 ♗xb1+
37.♗c2 b3+ mate.

36...♗xd1 37.♗xd1 ♗xb2 38.♗xb2 ♗xa4

Now a carefully timed advance of the pawns
will win.

39.♗c2 d5 40.♗b3 ♗a1 41.♗c2 ♗d6
42.h3 ♗c6 43.♗b3 ♗b5 44.g4 fxe4
45.hxe4 c4+ 46.♗c2 h6 47.♗d2

47.♗c3+ ♗c5 48.♗e2 ♗e1 causes even
more embarrassment. Black times his c3 for
when all his pawns and pieces are on their
best squares. 49.♗d2 c3+! 50.♗xe1 cxb2
and the pawn queens.

47...♗c5 48.♗c2 f6 49.♗d2 c3+ 50.♗xc3
bxc3+ 51.♗xc3 ♗d1 52.♗e2 ♗d3+
53.♗c2 d4 54.exd4+ ♗xd4 55.♗h2 e3
56.g5 hxg5 57.fxe5 fxe5 58.♗g2 ♗c3+
59.♗d1 ♗c5 60.♗b2 ♗d3 0-1

A really fine game by Alan Ashby.

The Bristol and District Chess League

The 17th League Congress

21st/22nd/23rd Jan 1994

A five round Swiss tournament.

Rate of play is 42 moves in 1 hour 45 mins,
then 15 mins to finish the game

Friday:	Round 1	6.45pm - 10.45pm
Saturday:	Round 2	9.30am - 1.30pm
	Round 3	3.00pm - 7.00pm
Sunday:	Round 4	10.00am - 2.00pm
	Round 5	3.30pm - 7.30pm

Followed by the prize giving.
Entry fees: £9 for players graded over 159
£5 for all others

Half fees for juniors (under 18 on 1/9/93), OAPs and UB40.
This tournament will incorporate a team event, entries
by 8pm on Friday.

12th, February, 1994.

A six round Swiss tournament.

All moves in 25 minutes.

Round 1:	10.30am
Round 2:	11.30am
Round 3:	1.30pm
Round 4:	2.30pm
Round 5:	4.00pm
Round 6:	5.00pm

Followed by the prize giving.

Entry fees: Open - £8
Major (Under 150) - £6
Minor (Under 100) - £4

Reduction of £1 for juniors (under 18 on 1/9/93), OAPs, UB40,
and students.

To be held at 'The Avon Gorge', 5th, Floor (North), The Students Union, Queens Road, Clifton, Bristol.
SMOKING IS NOT PERMITTED IN THE PLAYING HALL

Obtain entry forms from your club secretary or: Colin Axon, Tournament Organiser, 1(b) Oakfield Place, Clifton, Bristol. BS8 2BJ

Frank Palm's LETTER FROM HANNOVER

Dear Friends,

In my first letter two years ago (BCT 88) I promised 3-4 letters a year. Now I have to plead guilty for having talked nonsense. On the one hand, I overestimated my energy and spare time; on the other hand, chess life in and around Hannover proved to be more boring than assumed.

But suddenly, everything seems to have got going. Two world champions - one real and one by Campomanes' grace, the Four Nations Chess League (4NCL) in Britain, new discussions about financing the German Bundesliga, Hannover's countryside turning into a Mecca for chess professionals, and fine new prospects for our Bristol/Hannover chess exchange.

The World Championships

Many complained about this development, but we shouldn't overlook the advantages. We'll probably get rid of this Mafia-like bloke still on the FIDE chair; we could consume matches twice and blunders thrice, and joking apart, Chamel 4 brilliantly demonstrated how chess should be performed to the TV public. The only thing I regret is Timman's part. Still admiring him as one of the last gentlemen in top chess, I felt rather sad when he accepted work as Campo's tool.

The future? Possibly *The Times* is interested to keep the engine going and may finance one more K-K match, and after Campomanes' probable resignation next year the next president may be fed up with corruption and egomania. Kasparov and Short, on the other hand, may find their way back to the GMA, and then FIDE and the GMA could work out an optimum scheme for how to play the World Championships.

4 Nations Chess League

I was quite pleased about this latest attempt to improve team chess in Britain. But the publicity seems to me a bit optimistic compared with the bare facts. First: 4NCL sounds nice, but not a single team from Ireland, Scotland, or Wales is joining the competition. Second, and more weighty: a top league doesn't make much sense without an intact pyramid structure below. That means a promotion system, from the regional leagues to, for example, five parallel and geographically defined second divisions, and then to the first division. At the moment it looks a bit like a sky-scraper without a solid substructure.

Financial problems in the German Bundesliga and an interesting reform idea

The German Chess Bundesliga has been used regularly as an example of a successfully run top league. Especially after the disintegration of the Iron Curtain, the Bundesliga worked as a magnet to top East European players, and German teams were most eager to get as many as possible. But they ignored the fact that, unlike football or ice-hockey, the stars aren't paid by industrial sponsors but by passionate patrons, and since 1991 two of these moody sources dried up after their teams failed to score as expected. The Bundesliga still has 16 teams, but only 5 or 6 of them are good enough for international contests.

During 1993, there was an intensive discussion about how to ease the financial burden. The league captains agreed on the need to win a major company as sponsor and to make the Bundesliga more attractive for possible financiers. And they decided on an important change: from the season 1994/95 on, the second half of the Bundesliga, i.e. the seven rounds, will be played as a tournament at one central place within one week. More than 50 GMs, and a fine share of the world's top players, will assemble then, and the officials, including the German Chess Federation, hope to convince important sponsors of the attractions of this new model.

A new scheme for the Bristol/Hannover chess exchange?!

In October 1993, chess players from Bristol and Hannover met once again in Bristol for a long weekend with chess playing of various sorts and, what is more, strengthening old friendships and creating new ones. Steve Boniface once more demonstrated his extraordinary talent as a chess organiser by arranging an outstanding programme of chess events and sightseeing: highlights were Longleat Park and Courage Brewery.

As on times before, we discussed the near future of the sporting exchange. It seems as if we have to face a dramatic change in the Bristol/Hannover sporting exchange, presuming (as we're told) neither Bristol's municipal administration nor Bristol-Hannover Council will pay any subsidies for the exchange in 1994. We quickly agreed that there would be no general sporting exchange then because very few guys would be willing to pay about £200 fare for a weekend in Hannover. At this point, Steve assured me that a chess team will come in 1994, no matter what the increase in cost. Impressed by this enthusiasm, we found out that a breakdown of the general sporting exchange may include a real advantage for us; we only have to exploit it.

The sporting exchange has been run by the two cities since 1977. It was cosy for the sports groups involved as the fare was reduced to 50 per cent or even less, and most of the organisation work was done by the municipal offices. Two cushions for our laziness, and we trotted after our sports officials like obedient sheep, never asking if it would benefit us to leave the flock. Throughout the years we accepted both unpleasant dates and the shortness of the weekends - most other known Bristol/Hannover exchanges (such as school children, students, theatre groups, public services) meet much longer and more regularly and thus get much better chances to become more acquainted and to get to know the twin town and its surroundings. And why shouldn't we have these advantages as well? When meeting as an individual group, we can decide both the date and the length of the exchange visit without showing any consideration for any official - and a longer stay may be well worth a doubled fare.

Provisionally, we agreed on the second half of June 1994 as the probable date for the next chess visit in Hannover, and in prolonging the meeting to nine days (two weekends and the week within) in order to have time enough for chess, friendships, pubs, cultural highlights in the city, and trips to the countryside as well. Our district committee has already agreed with this scheme, and we're looking forward to welcoming a fairly large group of Bristolian friends.

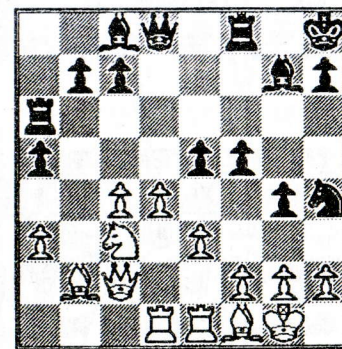
Editor's Note: Frank may be getting carried away just a bit here. The idea of a longer exchange has been discussed but no decisions have been made as yet at this end!

Next issue, Frank will describe the amazing growth in chess around Hannover, especially in Stadthagen. To what the appetite, here is a game from the Bundesliga:

Z Ribli - E Lobron

Bundesliga, Bavaria-Stadthagen 1992

1.c4 e5 2.♘c3 ♖f6 3.♘f3 ♘c6 4.d3 ♘e7
5.e3 0-0 6.♘e2 d5 7.cxd5 ♗xd5 8.0-0
♙h8 9.a3 f5 10.♘d2 ♘f6 11.♙c2 a5
12.♗f1 ♖b6 13.b3 g5! 14.♘c1 g4
15.♘d2 ♘g7 16.♘b2 ♗e7 17.♘f1 ♘g6
18.♘c4? ♗xc4 19.bxc4 ♗h4 20.♗ad1
♗a6! 21.d4



21..♘f3+! 22.gxf3 gxf3 23.dxe5 ♙h4
24.♗e2 ♗h6 25.h3 fxe2 26.♙xe2 f4! 27.e6
♗g6+ 28.♗h2 f3 29.♙c2 ♙g5 0-1

The Famous Four Strike Forth

'Olde Wills'

An occasional series of stories (hopefully) about the things that go wrong travelling to matches... (Names have not been changed to protect the innocent - none are innocent)

ONCE UPON A TIME there were four friends: Chris Sm, Martin, Alex and Chris Si; and they all attended a well known educational institution. They had one other thing in common, they all liked to play the noble game of chess.

On this particular evening, they were supposed to be joined by two other friends, to travel over-the-hill-and-far-away to the part of Bristol known as Cossham. Their friends had forgotten about the match, and so our famous four set off on an intrepid journey to lands unknown without them.

The Students Union was kind enough to supply a minibus, so there was plenty of room for them, their sandwiches and ginger beer. Chris Si was allowed to drive the bus and captain Chris Sm was in charge of the map. Martin and Alex were left to watch the sandwiches. At 7pm they trundled out of the car park and down the road.

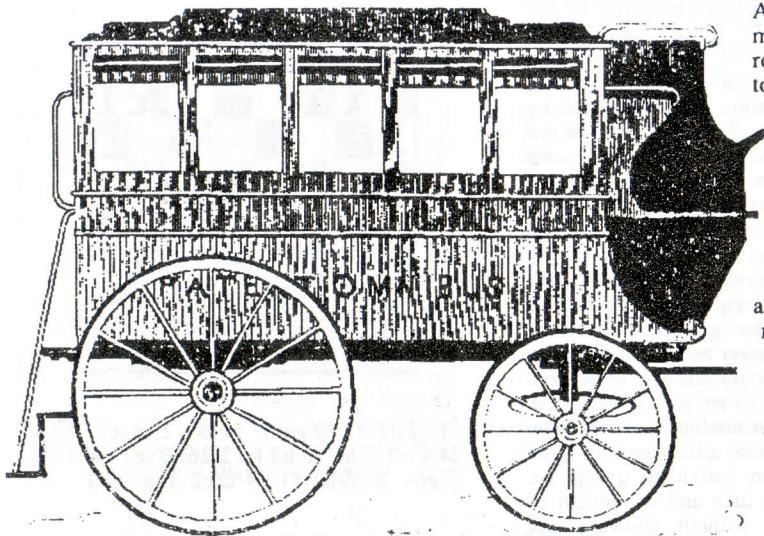
A while later...*Splutter, splutter, oh no!* The bus had run out of fuel! Even with Martin's extra-beady beady eye it took them ages to find a petrol station. Of course, it could not be that simple - they had no container! Not wanting to break into the ginger beer they bought a bottle of Pepsi, drank some and tipped the rest away - ingenious! - though filling the now empty bottle with petrol proved rather tricky and tested Chris Si's coordination to the limit. (Remember, you should not try this at home for yourselves.)

After putting what little fuel they had into the bus, Chris Sm said, "Have no fear, my friends, I have my scout map reading badge, I shall lead you there!"

Alex suggested it might be better all round if Chris Si took charge of the map.

This was agreed and they eventually arrived at their long sought after destination.

Naturally, they did the decent thing and defaulted the match (it was 9:15), and in the best spirit of the game played a few friendlies but they were, nevertheless, very upset.



At 11pm one of their new-found friends from Cossham gave them a lift back to the bus. He chuckled as he left them and wished them a safe journey home.

Unfortunately, the minibus was parked on a slope and so the small amount of petrol they had wouldn't start the engine. Given that all garages were now shut, there could only be one course of action - Captain Chris had to phone for the AA.

Our friends were ever so glad that they had saved the sandwiches and ginger beer and passed the time by playing blindfold chess. Chris Si was just about to smash poor Martin from his virtual board, when the nice AA man arrived. The crowd went wild! The nice AA man commented that it must be way past their bed times and said that they would all have to be doubly good for the next two weeks to make up for it. They moaned, but promised to do so. The nice AA man gave them some unleaded petrol and, thanking him very much, they flew off down the road home.

On reaching central Bristol at 12:30am they visited the 24 hour garage to fill up; only Chris Si was not as observant as Martin and failed to notice which pump he picked up; he filled the tank with diesel! The knowledgeable garage attendant assured our intrepid trail blazers that those breed of minibus will run on Mars Bars, so diesel should be fine!

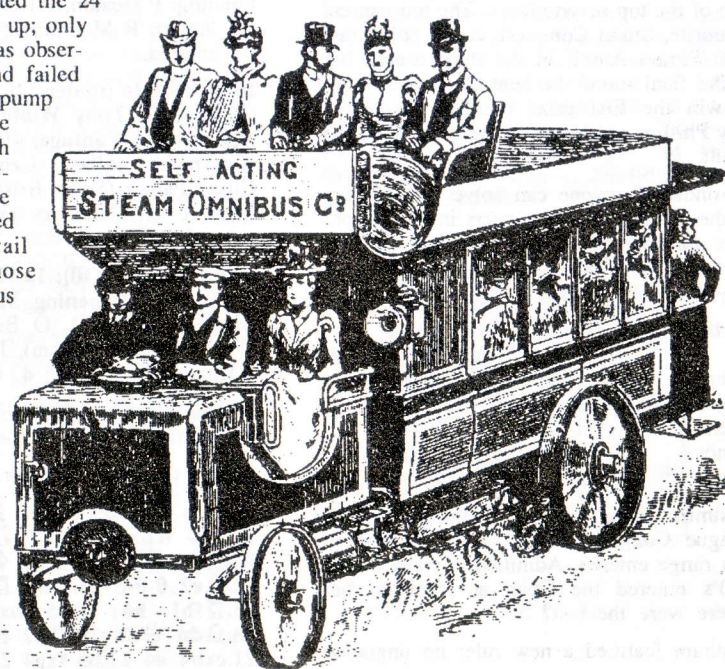
Off they went again, on the last leg home. But disaster struck! Fifty yards up St Michaels Hill the minibus expired in a huge cloud of dense black smoke!

They stopped and called the AA man again. Meanwhile, because Chris Sm and Martin lived close they said goodbye to their buddies and walked the rest of the way home.

Soon, the very very nice AA man arrived and, after fits and howls of laughter, towed the bus back to the Union and then drove Chris Si and Alex home. Out of sympathy, the very very very extra nice AA man felt unable to charge the unlucky friends. He did, after all, have a most entertaining evening.

And here our story ends. Our heroes were safely tucked up in bed, revitalising themselves for their next great adventure. Oh what fun they had!

[And the moral of the story is: do not name any of your new-born 'Chris']



Conquest conquers at Hanham

John Richards

THE Hanham Congress relaunched itself in new premises and was a tremendous success. Some people do not like playing in congresses located in schools - they should try this one. The playing areas were excellent, the lighting was good, and there were two analysis rooms. Those unsung heroes, the Hanham wives, provided non-stop catering all weekend. The only possible complaint was that the boards were too close together in the lower part of the Open (where I spent most of my time). Ian Biddick assures me this will be sorted out next year. So, if you missed it, make sure you play at Hanham next time.

Bristol players dominated the Open, taking five of the top seven places. The tournament favourite, Stuart Conquest, could only draw with Simon Ansell in the third round, but in the final round, he beat Chris Beaumont to win the first prize outright. Grendel's Roy Phillips can be particularly proud of his result.

I wonder if anyone can solve the mystery of the missing Bristol players in the Major? The number of Bristol entrants in this section (for players rated 140 to 169) was way down as shown in this table:

Section	Total Players	Bristol Players	% of total
Open	31	13	42
Major	33	8	24
Intermediate	71	33	46
Minor	61	34	56
Total	196	88	45

A similar thing happened in the last Bristol League Congress, when hardly anyone in this range entered. Admittedly, some of the 160's entered the Open at Hanham, but where were the rest?

Hanham featured a new rule: no ungraded

player could win a major cash prize in the Minor. This rule, designed to stop sharks from walking away with the prizes, ended up catching a minnow. Young David Buckley has not been playing long enough to get a grade, so his success in tying first in the Minor won him just £25 for best ungraded player, instead of £87.50.

The Minor also saw a player disqualified in unusual circumstances. Chief controller, Steve Boniface, spotted the player looking at a game in the analysis room and, a few minutes later, playing exactly the same position in the tournament room.

Open: 1 Stuart Conquest (Bristol) 4½/5; 2= Roy Phillips (Grendel), Simon Ansell (University) 4; 4= Chris Beaumont (Clifton), Tyson Mordue (Downend), Gerald Moore (Hounslow), James Cobb (Swindon) 3½. 31 entered.

Major (under 170): 1 P J Briggs (Oxclose) 4½; 2= Ian Bourne (Opening Moves), F N McLeod (Southampton Univ) 4; 4= I Murray-Watson (Ross on Wye), C Costello (Ealing), G N Crockart (Wantage) 3½. Grading: P Heaton, P Lesniowski (University). Junior: R M Churm (Thamesdown) 2.5. 33 entered.

Intermediate (under 140): 1= E G Sparke (Exmouth), Tony Wolfenden (Salisbury), N J Smith (Wantage) 4½; 4= S C Roberts (Cossham), Albert Camilleri (Horfield), Cliver Parker (South Bristol), R J Brammer (Boots), G Hunwicks (Weymouth) 4. 71 entered.

Minor (under 110): 1= G Iwi (University), D Buckley (Opening Moves) 4½; 3= M Bennett (Hanham), O Bright (Keynsham), W H Burton (Hanham), J Tuson (Grendel), J Rossenbly (Exeter) 4. 61 entered.

16 year old James Cobb played an entertaining miniature in the Open fourth round:

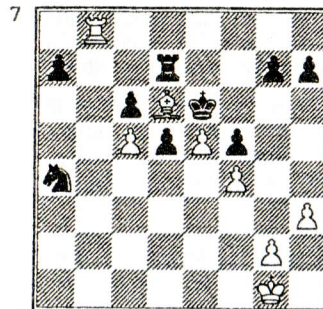
James Cobb - J Fraser-Mitchell

1.e4 e6 2.d4 d5 3.♗c3 ♘b4 4.e5 c5 5.a3
 6.♗xc3+ 6.bxc3 ♗c7 7.♖f3 ♖e7 8.a4 b6
 9.♘b5+ ♘d7 10.♘d3 ♖bc6 11.♗d2 c4
 12.♘e2 0-0-0 13.♘a3 ♗d8 14.0-0 ♖f5
 15.♘fb1 h6 16.a5 bxa5 17.g4 ♖fe7
 18.♘d6 ♗d8 19.♗b2 f5 20.♗ab1 ♖b4
 21.cxb4 a4 22.b5 fxg4 23.b6 gxf3 24.b7+
 mate

Games

Dave Collier concludes his look at last year's League Congress Section One.

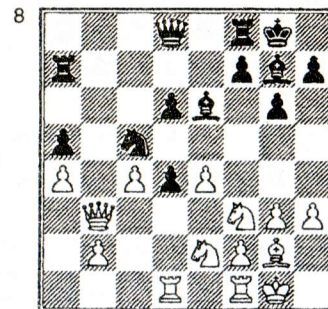
D O Collier - M Rodic
 Round 4, 1993



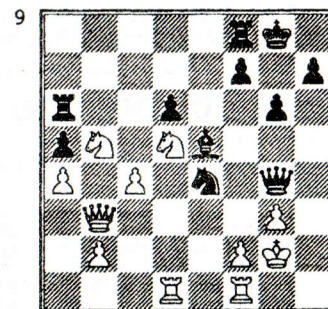
1.♗c8 [This is actually move 40 and there are 2 moves left to make before the time control so after playing this I was kicking myself for not repeating moves first by ♗e8+ and ♗f8+] 1...d4
 2.♗xc6 [The idea here is that the ♗ will look after the ♖ but I had missed something] 2...d3
 3.♖f2 ♗b7 [At last the time control - now into the quickplay finish and with a few minutes to think I spotted what I had missed before, but no turning back] 4.♗e3 ♖b2 5.♗c7 ♗b3 6.♗d4 [otherwise black plays ♗d5 followed by ♖c4+] 6...♗b4+ [6...d2 7.♗e7#] 7.♗c3 ♗c4+ [This is what I had missed originally - black sacrifices the ♖ in order to ♗ the ♗, but there is light at the end of the tunnel...] 8.♗xb2 d2 9.♗e7+ ♗d5 10.♘b8 ♗e4 [10...d1♗ 11.♘d7+; 10...♗c6 11.♗c7+ ♗b5 12.♗d7] 11.♘d7 ♗b4+ [11...♘d4 12.♗xd4+ ♗xd4 13.♗c2+] 12.♗c2 ♗xb8 13.♗xd2 a5 14.c6 a4 15.c7 ♗c8 16.g3 a3 17.♗c3 ♖f3 18.e6 ♗xg3 19.e7 ♗xf4 20.♗b3 ♗e5 21.♘d8+- [The game actually carried on as my opponent wanted me to prove that I could mate him before my clock ran out - I did, just] Line +-
 19.♗a2 [A difficult move to find and play but it's probably best] 19... d3 20.♗d4 [Threatening ♖c6 and heading for b5 - if ♖f4 ♗b7] 20...♗c8 21.♘b5 ♗a6 22.♗e1 [22.♗h2 ♖xe4 23.♗xd3 ♖xc4+] 22...♖xh3 23.♖xd3 ♖xg2 24.♗xg2 ♖xe4 25.♖f4 ♗e5 26.♖d5 ♗g4 [♖♗xg3] 27.♗b3

D O Collier - C R Beaumont
 Round 5, 1993

1.d4 ♖f6 2.c4 c5 3.d5 b5 4.a4 b4
 5.g3 d6 6.♗g2 g6 7.e4 ♗g7 8.♗e2
 0-0 9.0-0 a5 10.h3 ♗a7 11.♗e3 e6
 12.dxe6 [This is where we deviate from the league match when I played the interesting but dubious e5 - mysteriously Chris had already used up about 30 minutes on the clock] 12...
 ♖xe6 13.♗d2 ♖fd7 14.♗c2 ♖c6 15.
 ♗ad1 ♖d4! 16.♖xd4 cxd4 17.♖f3
 b3!? 18.♗xb3 ♖c5



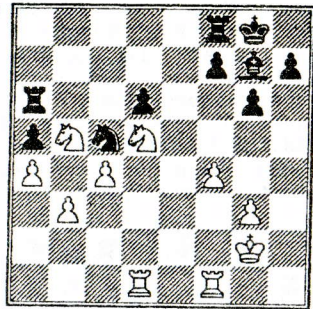
19.♗a2 [A difficult move to find and play but it's probably best] 19... d3 20.♗d4 [Threatening ♖c6 and heading for b5 - if ♖f4 ♗b7] 20...♗c8 21.♘b5 ♗a6 22.♗e1 [22.♗h2 ♖xe4 23.♗xd3 ♖xc4+] 22...♖xh3 23.♖xd3 ♖xg2 24.♗xg2 ♖xe4 25.♖f4 ♗e5 26.♖d5 ♗g4 [♖♗xg3] 27.♗b3



27...♖c5?! [Lack of time persuades Chris to head for what

he thinks is a favourable ending - continuing the attack with f5 won the post-mortem] 28. ♖c2 ♗e4+ 29. ♗xe4 ♠xe4 30. b3 ♠c5 31. f4 ♠g7

10



32. ♠xd6!? [I don't know how many !s and ?s to give this move. The tactical justification is simple enough ♠xd6 33. ♠e7+, but it is tempting to leave the black ♠ passive on a6. However white has to do something to win - like queening the c♠] 32... ♠xb3 33. ♠e4 ♠e6 [Chris felt that he had to find a better move here, but what?] 34. ♠fe1 ♠c8 [34... ♠fe8 35. ♠ef6+ ♠xf6 36. ♠xf6+-] 35. ♠d6! ♠xel? [This gives white control of the e file. Allowing the ♠ to be captured on e6 does nothing for black's pawn structure but does give his ♗ some air] 36. ♠xe1 ♠d8 37. ♠b7! ♠b8 38. c5! ♠f8 [38... ♠xb7 39. c6 ♠b8 40. c7 ♠a8 41. c8♗+ ♠xc8 42. ♠e7+-] 39. c6 ♠c8 40. c7 ♠c5 41. ♠xc5 ♠xc5 42. ♠e8+ ♠xe8 43. ♠f6+ 1-0

Grading Corrections

The Grading Supplement had some entries missing. Apologies to those concerned.

Name	Club	Grd
BREEZE G	HORFIELD & REDLAND	152
BRIGDEN ME	DOWNEND & FISHPONDS	177
BROADWAY T	HANHAM FOLK CENTRE	99
BROOKES CJ	SOUTH BRISTOL	164
BROWN C	HANHAM FOLK CENTRE	94
BROWN J KEITH	NAILSEA	150
BUCKLEY GRAEME	BATH	220
BUNN R	HANHAM FOLK CENTRE	101
BURGESS GRAHAM	DOWNEND & FISHPONDS	216
BURGON A	NAILSEA	88

Keene to speak for charity

Ray Keene is coming to the West Country to give "an entertaining talk on all aspects of chess and live game analysis". This event is being organised to raise money for the Marie Curie Cancer Care charity, and will be held at the Forte Posthouse, Taunton (junction 25, M5) on 15th February at 8pm. Tickets cost £5 for adults and £3 for children (£1 per ticket discount for parties of five or more, booked in advance).

Cheques should be made payable to "Marie Curie Cancer Care" and sent to Jon Duckham, Tiverton Marie Curie Centre, Tidcombe Lane, Tiverton, Devon, EX16 4EJ.

"No Vacancies" at Torbay

The 28th Torbay Open was very strong; so strong that Bristol's GM Stuart Conquest failed to get in the prizes. There was a huge entry of 238 for the congress and some players missed out as entries had to be closed a week before.

Open: 1= K Arkell (Derby), D Agnos (Twickenham), D Cummings (Bracknell) 4½; 4= K Norman (Wokingham), A Summerscale (London) 4; Grading: Roy Phillips (Grendel) 3½, R Nixon (Dagenham) 3. 52 entered.

Major: 1 P J Morgan (Newton Abbot) 4½; 2= B Boomsma (Paignton), M Hobbs (Wellington Sch) 4. R J Barlow (Bath) was equal 4th on 3½. 46 entered.

Intermediate: 1 E P Goggin (Byfleet) 4½. 62 played.

Minor: 1= L Fancourt (Derby), R J Howells (Port Talbot), R G Wilby (Holne) 4½. 78 entered.

Too much of a good thing?

Addicts Corner in December's CHESS magazine claims that in a game in the 1954 WECU Championship, one player castled twice. Can anyone provide more information?

Letters to the Editor



Letters have been edited for the purposes of clarity and space.

Junior Issues

Dear Sir,

I would like to respond to a few items in the September issue of the BCT.

1 British Minor Clubs Championship

Marlwood School has entered the event again this year, having won it on the only previous entry when, in 1987, Gravesend CC were beaten 3½-1½ in the final held at the headquarters of the sponsors, Peterborough Software. The School has also entered the British "Quickplay", although more for experience than any hope of success, since this is not a grade-limited competition. Home matches are expected shortly against Warley Quinborne and Cardiff CC respectively.

2 I was pleased to learn of the development of the "Opening Moves CC" last year, and glad to hear of their promotion of a "Bristol" junior championships, held in September. It was good that adult players were putting something back into local chess circles - the "Bristol" championships are long overdue. Equally, the promotion of a Junior event by the St. Paul's club (Harambee) in their event in October was a welcome addition to the local calendar.

However, both of these new events clash with existing events to which local players have commitments through their teams, and I would urge the organisers of any new events to make contact early in the planning stage to avoid unnecessary competition that puts strains on loyalty, and reduces support.

3 Personally, I applaud the development of junior chess events that are not also part of long, boring adult weekend events, expensive to get to and to enter, and with little prospect of success for the young player and

thus likely to dull their interest.

As a teacher and a parent, better by far, I feel, is to spend time on a diversity of interests, preferably some having vigorous activity as a central feature. (The agricultural practise of monoculture has as many perils about it as does an educational or social pursuit of similar kind). Kids need time to branch-out, and sometimes to keep their own counsel, or do nothing at all, instead of a relentless pursuit of every chess game available. They certainly benefit from competing against others of similar age!

Parents need to be selective from time to time, balancing commitment and loyalty (to any organisation) with other concerns. There is also a heavy responsibility borne by those who take advantage of other's efforts to organise and promote activities and interests, to ensure the general educative value is not overlooked. There has to be a role for the "taking-part-being-as-or-more-important-than-winning" ethos. And there has to be a responsibility charged to Parents and Team Managers to ensure that the all important ingredient of any child's vocabulary, "Thank You", is installed into place for use at the appropriate time!!

4 "The Bristol Chess Festival" was something of a surprise to read about, perhaps because I was not at the time a subscriber to BCT nor are we involved in senior chess. I would suggest then, that if there is to be such a promotion next year, that you consider including a listing of the "12th Marlwood Chess Tournament", along with other events. We would welcome visitors to this international team event and the involvement of seriously interested and capable helpers. With a cast of 450 players, 33 teams from throughout the British Isles, 14 national age-group champions and a dozen junior international players, and a budgetary turnover of £4500, it is certainly worth experiencing. I would happily answer any queries about this event.

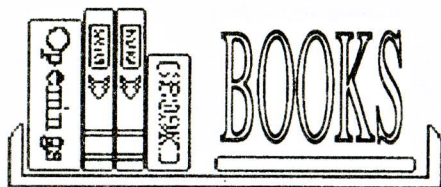
5 Is there anyone who can "grasp the nettle" of the Gloucestershire junior chess organisation? For some years now, there has been little activity on this scene, to contrast with the well-organised output of the numerically smaller Somerset. Or even to do

something on behalf of "Avon" in national youth chess age-group team championships?

6 The Marlwood teams have had a good 12 months in domestic junior chess. Having won the Bristol Junior League Division 3 title at the end of the last season, the "A" team of Andrew Dugdale (captain) and Jody Johnson - both of whom play for Thornbury Chess Club - and Andrew Morgans and Richard Colfer - who was selected to play for England Under 16's to play Wales - playing as an intact, undisturbed, team throughout the season, took the League

Division 1 title. They went on to complete a unique double by winning the Knockout Cup, and then a treble by gaining victory in the "Vic York" Speedplay event in September. The season was concluded with a 31-board simultaneous, sponsored by Nuclear Electric, against Grandmaster Glenn Flear. The "simul" has now become a regular feature of the season's end. In previous years we have engaged the services of Stuart Conquest, Susan and Keith Arkell (for a tandem simul), and Michael Hennigan.

David Goldring Marlwood School



Batsford Chess Endings, Jon Speelman, Jon Tisdall, Bob Wade, Batsford, 448pp, £19.99.

Any new endings book has to be measured against the classics of the past. After all, £19.99 is a lot of money to pay out if it adds nothing new to the books you have already got. Endings theory does not change as fast as opening theory, so you could be forgiven for asking if BCE says anything new. I think it does. In the last few years, there has been tremendous advances in the analysis of endgames with the assistance of computer programs to perform exhaustive searches and make definitive statements on particular endings. BCE draws on the results of this work (with the help of John Nunn). For example, in the section on rook and bishop v rook, Speelman gives a position originally analysed in 1763. But it is only now that we can be absolutely certain it is a draw, with the computer finding 15 'only'-moves for Black in a row. Even more striking is the section on queen and pawn v queen, where BCE contains a few of the results of computer analysis that has corrected such standard works as the Encyclopaedia of Chess Endings.

The three authors have written different sections of BCE. Speelman did the pawn and rook endings; Tisdall most of the minor piece stuff; and Wade contributed most of the queen endings. All have done a good job on explaining the principles behind the different types of endings.

The layout is one of the most striking things about the book. It is clear and clean. Large symbols on the top of each page assist the reader in finding the right section. The designer has not been afraid to use white space liberally throughout and this makes it a pleasure to read. It's a pity that after such a creative piece of work, the designer does not even get a credit. Byron Jacobs did the typesetting, so perhaps he did the design. If so, well done Byron! There seem to be a number of typos, starting with the second diagram in the book that gives a 'stalemate' position which isn't. Hopefully, the second edition will remove as many of these warts as possible.

Batsford describe this book as the "long-awaited companion to BCO". I think that is under-selling; BCE is a much more impressive achievement than BCO. If you are looking for a general endings book, then I would say BCE is the one to go for. Even if you have already got the standard works sitting on the book shelf, then you should still consider making the shelf space. Well worth investing some of those Christmas book tokens.

John Richards

How to Play the Opening in Chess, R Keene & D Levy, (First Algebraic Edition), Batsford 1993 (First published 1974).

Being a relative beginner at chess I should warn that any claims or opinions I put across in this article are based on limited experience. Since the book itself is aimed at beginners, however, a beginner's views and perceptions are probably quite appropriate.

The first part of the book discusses issues like the importance of the initiative, the centre, the pawn structure, sound development, and king safety. Although this part is rather brief and basic in its explanation, it is the better part of the book because it provides the novice with a fundamental understanding of general principles with the aid of good, clear illustrations.

The second part, on individual openings, attempts to describe some of the ideas behind selected openings. The book covers seven 1 e4 openings (King's gambit, Italian, Spanish, Sicilian, French, Caro-Kann and Modern), four 1 d4 openings (Queen's gambit, Nimzo-Indian, King's Indian and Dutch) and the flank openings (1 b3, 1 Nf3, and 1 c4). I found it difficult, however, to grasp the scope of these sections, and indeed, the scope of the book in general.

Although the book is clearly not intended as a repertoire, it does not prepare the reader with a thorough enough coverage of the openings because too many openings commonly met at the beginner level are omitted (eg. Philidor, Petroff, Centre-Counter, etc.). I think a beginner is more likely to encounter the Philidor say, than the Kan variation of the Sicilian Defence!

On the other hand, coverage of the openings is very often too sparse to be useful at beginner and intermediate levels alike. For example, the section on the English opening simply covers the opening part of one game in the Symmetrical Variation, and the section on the Sicilian Dragon waives the popular Yugoslav Attack variation as leading to "some of the most hideously complicated positions in chess" and proceeds to consider only a few moves of a main line with 7 Be2. Although interesting, I hardly consider this level of information useful from a practical point of view. The

same level of detail and annotation could have just as easily been obtained by playing through a single game from any good chess magazine.

Overall I think that the balance of material in the book is wrong: for the sake of being general, it skims and skips over too much material under the misconception that this is sufficient for beginners. I think that this book is a classic example of "a little knowledge being more dangerous than no knowledge". It is too basic for intermediate players and too sketchy for beginners.

Albert Camilleri

How to Play the Nimzo-Indian Defence, Raymond Keene and Shaun Taulbut, Batsford, 163pp, £10.99.

Like many openings books, it covers all the fashionable lines, as well as most of the not so popular ones. Like many, it contains a wealth of analysis. Like many, it draws a considerable proportion of its illustrative games from the past decade. Though, unlike many, there is a reasonably clear account of the basic principles and general plans. But the authors do stop short at times. It is not always obvious why "Black has no problems after ...".

On the whole, however, this monograph is well-written and considerably better than many of Keene's solo efforts (including *Winning with the Nimzo-Indian*). There are, however, some lapses of sensibility, including this one from the chapter on Botvinnik's Variation: "White will develop his knight on e2, follow up with f3, and aim for a *cosmic breakthrough* based on e4". Do the authors commute to this planet each day?!

By using some historical games, the introduction attempts to show how this solid defence has developed. These include a correspondence game (c. 1844) between Howard Staunton and Bristol Chess Club! (HS won). Another pleasing feature is the "Thematic Index" (though still no index of variations - a bug-bear of mine).

In summary: quite reasonable value, both in terms of the number of pages, and the content.

Colin Axon

Results

All results received by the Match Secretary since the last issue and up to 21st December are included.

A = adjudication; C = continuation.

KO Round 2: Grendel A 6½ Keynsham 1½; Sun Life A 1½ Horfield 5½ (1C); Sea Mills A 4½ Clevedon 3½; Clifton A 4 S Bristol 4 (Clifton win on board count); Bath v Harambee *postponed*; Nailsea A v B Royals *postponed*; Hanham A 3 Downend 5; Thornbury A 2 University 6.

Division 1: Horfield A 2½ Clifton B 3½; Clifton B 3 Bath 3; S Bristol A 1½ Downend A 3½ (1C); University A 3½ Clifton B 2½; Bath 4½ S Bristol A ½ (1A); Clifton A v Sea Mills A *postponed*; University A 4 Horfield A 2; Downend A 6 Sun Life A 0; Horfield A 3½ Grendel A 2½; Sea Mills A 2 University A 4; Clifton B 5 S Bristol A 1; Bath 5½ Sun Life A ½; Sea Mills A 2½ Clifton B 3½; Clifton A v Horfield A *postponed*; University A 1 Downend A 4 (1C); University A 4 Bath 2; S Bristol A 1 University A 5; Sun Life A v Clifton A *postponed*; Clifton B 2½ Grendel A 2½ (1A); Grendel A 5 Sea Mills A 1; Horfield A 4 S Bristol A 2; Clifton A 1½ University A 4½; Downend A 2½ Horfield A ½ (3C); Sea Mills A 2½ Bath 3½; Clifton B 5 Sun Life A 0 (1C); University A 5½ Grendel A ½; Downend A 2 Clifton B 1 (3C); Bath 2 Clifton A 3 (1A).

Division 2: Hanham A 3 Nailsea A 3; Grendel B 4½ Clevedon A 1½; Horfield B 4 Keynsham A 2; Hanham A 4 Horfield B 2; Downend B 2½ Clevedon A 3½; Keynsham A 2½ Hanham A 3½; Cossham A 2 Grendel B 4; Thornbury A 2½ Nailsea A 3½; Nailsea A 1½ Horfield B 4½; S Bristol B 4 Keynsham A 2; Grendel B 5 Downend B 1; Hanham A 3½ Clevedon A 2½; Horfield B 2½ Cossham A 3½; S Bristol B 2 Thornbury A 4; Keynsham A 2 Nailsea A 4; Hanham A 3 Downend B 3; Cossham A 2 Thornbury A 3 (1A); Horfield B 4 Grendel B 0 (2A); Clevedon A v S Bristol B *postponed*; Nailsea A 3½ Cossham A 2½; Downend B v Horfield B *postponed*; Keynsham A 2½ Grendel B 3½; Thornbury

A 3 Hanham A 3; S Bristol B 2½ Hanham A 2½ (1A); Cossham A 2 Downend B 1 (3A); Clevedon A 4½ Keynsham A 1½; Grendel B 3 Nailsea A 3; Horfield B 2 Thornbury A 4.

Division 3: Nailsea B 3½ Clifton D 2½; University B 3 Horfield C 3; Hanham B 2½ Cossham C 3½; Clifton C 3 Thornbury B 3; Clevedon B 2 Cossham B 4; Hanham B 2 Horfield C 4; Thornbury B 3½ Clevedon B 2½; Clifton D ½ University B 4½ (1A); Cossham B 5 Nailsea B 1; Clifton C 3½ Hanham B 2½; Cossham C 2 Cossham B 4; Clevedon B 2 University B 4; Nailsea B 4 Hanham B 2; University B 4½ Cossham B 1½; Horfield C 2½ Thornbury B 3½; Cossham C 3 Clifton D 3; University B 5 Clifton C 1; Clifton D ½ Horfield C 5½; Hanham B 2 University B 4; Thornbury B 2 Cossham C 4; Cossham B 4 Clifton C 2; Clevedon B 2 Horfield C 4; Horfield C 2½ Nailsea B 3½; Thornbury B v Clifton D *abandoned*; Cossham C 2 University B 4; Hanham B 3 Clevedon B 3.

Division 4: Downend C 4½ Sea Mills B 1½; Hanham C 4 Keynsham B 2; University C 4 Sun Life B 2; Sea Mills B 0 Grendel C 6; Harambee A 1½ Horfield D 4½; Nailsea C 2 Hanham C 4; University C 2½ Downend C 3½; Keynsham B 1½ Horfield D 4½; Grendel C 3½ University C 2½; Nailsea C 3½ Sea Mills B 2½; Downend C 5½ Sun Life B ½; Hanham C 3½ Horfield D 2½; Harambee A 2½ Keynsham B 2½ (1A); Hanham C 2½ University C 3½; Harambee A 1½ Grendel C 4½; Grendel C 3½ Keynsham B 2½; Downend C 5 Hanham C 1; Horfield D 3 Nailsea C 1 (2A); University C 4½ Sea Mills B 1½; Sun Life B 1½ Horfield D 4½; Sea Mills B 2½ Hanham C 3½; Grendel C 4 Downend C 2; Sun Life B 1 Harambee A 5; Keynsham B 1½ University C 4½; Horfield D 1 Downend C 4 (1A); Keynsham B 1 Nailsea C 4 (1A).

Division 5: Hanham D 2 University D 4; S Bristol C 3½ Thornbury C 2½; Cabot 3 Clevedon C 3; Civil Service 1½ B Royals 3½ (1A); University D 1½ S Bristol C 4½; Grendel D 3½ Thornbury C 1½ (1A); Hanham D 3 Nailsea D 3; B Royals 5½ Cabot ½; Civil Service 3 Clevedon C 3; Cabot 3 Nailsea D 3; Civil Service 2½

University D 3½; Grendel D 3½ Hanham D 2½; S Bristol C 4 B Royals 1 (1A); Thornbury C 2½ Cabot 2½ (1A); Clevedon C 2½ University D 3½; Nailsea D 2½ University D 3½; Thornbury C 4 Clevedon C 2; Civil Service 2½ Grendel D 2½ (1A); Nailsea D 3 S Bristol C 2 (1A); University D 2 Thornbury C 4; Hanham D 4 Civil Service 2; Grendel D 3½ Cabot ½ (2A); Hanham D 1½ Clevedon C 2½ (2A); Thornbury C 2½ Civil Service 3½; B Royals ½ Nailsea D 5½.

Division 6: Yate A 3½ University F 2½; Horfield E 5½ Clifton E ½; Yate A ½ University E 5½; Keynsham C 3½ University F 2½; Grendel E 4 University E 2; Downend E 3 Clifton E 3; Yate A 3 Keynsham C 3; Horfield E 4 University F 2; Grendel F 2 University G 4; Harambee B 2 Downend D 4; University F 6 University E 0; University G 5 Downend D 1; Horfield E 2½ Grendel E 3½; University

E 5½ Grendel F ½; Downend E 2 University F 4; University G 3½ University F 2½; Downend D 3 Grendel E 3; Downend E 2 Harambee B 4; University E 3½ Horfield E 2½; Yate A 2½ Grendel F 3½; Clifton E 3 Keynsham C 2 (1A); University F 3½ University G 2½; Grendel F 2 Horfield E 3 (1A); Yate A 4 Downend D 2; Downend E 1 University G 5; Keynsham C 2½ University E 3½; University F 5 Clifton E 1; University G 5 Yate A 1; Grendel F v Harambee B *postponed*; Horfield E 4 Downend D 1 (1A); University E 4½ Downend E 1½; Clifton E 2 Grendel E 4; University F 2½ Keynsham C 3½; University G 3 Grendel E 3; Downend D 1½ University E 4½; Horfield E 5 Yate A 1; Clifton E 1 University F 5; Harambee B 3 University G 3; Grendel E 4 Keynsham C 2; Downend E 3½ Grendel F 2½; Harambee B 3½ Clifton E 2½.

Division 7: University H 3½ Nailsea E ½; Grendel G 2 Yate B 2.

League Tables

includes all received and decided results up to 21/12/93

Division 1			Division 2			Division 3		
	Pld	DP Pts		Pld	DP Pts		Pld	DP Pts
University A	8	- 14	Hanham A	8	- 13	Cossham B	9	- 15
Downend A	7	- 13	Nailsea A	9	- 13	University B	9	- 15
Bath	8	- 10	Thornbury A	8	- 10	Nailsea B	8	- 12
Clifton B	6	- 9	South Bristol B	7	- 9	Thornbury B	8	- 10
Horfield A	7	6 8	Grendel B	9	- 9	Horfield C	9	- 10
Grendel A	8	- 8	Clevedon A	8	3 8	Cossham C	9	- 8
South Bristol A	8	- 4	Horfield B	8	- 7	Clifton C	8	- 6
Clifton A	4	1 2	Cossham A	7	- 5	Clifton D	8	- 6
Sun Life A	6	5 1	Keynsham A	9	4 5	Clevedon B	9	- 3
Sea Mills A	8	1 1	Downend B	7	- 1	Hanham B	8	- 1
Division 4			Division 5			Division 6		
	Pld	DP Pts		Pld	DP Pts		Pld	DP Pts
Grendel C	9	4 16	South Bristol C	7	- 14	Grendel E	10	5 17
Downend C	9	4 14	Grendel D	7	7 11	University E	10	1 16
University C	8	1 12	University D	8	1 10	University G	8	- 12
Hanham C	9	- 11	Nailsea D	8	- 9	University F	11	- 12
Horfield D	8	- 9	Thornbury C	8	- 8	Harambee B	8	2 10
Harambee A	7	- 6	Bristol Royals	7	- 7	Horfield E	8	2 10
Keynsham B	7	- 4	Civil Service	8	1 5	Downend D	10	3 8
Sun Life B	7	- 4	Clevedon C	7	1 4	Keynsham C	8	1 7
Nailsea C	8	- 4	Hanham D	7	1 4	Yate A	11	- 7
Sea Mills B	8	- 0	Cabot	7	4 2	Clifton E	10	9 6
						Downend E	11	1 5
						Grendel F	9	- 4

DP = Default Penalty Points. One league point has been deducted for every ten DPs.

Diary

Use this column to advertise your events. It's free, but please send your entries in plenty of time to the Editor.

1994

- Jan 7-9. SOUTH WALES chess festival.
 Jan 8. Wilts v Glos. Devon v Somerset.
 Jan 21-23. BRISTOL LEAGUE Congress, Students' Union, Queen's Rd, Bristol.
 Jan 22-23. 4 NATIONS CHESS LEAGUE. Bristol play in Cheltenham. Spectators welcome. Contact: David Collier (0272) 213721.
 Feb 12. 1st BRISTOL LEAGUE QUICK-PLAY. Students' Union.
 Feb 15. TAUNTON. An evening with Ray Keene. See page 14.
 Feb 19-20. 4 NATIONS CHESS LEAGUE. Covent Garden.
 Mar 4-6. EAST DEVON Congress. Contact: E.G.Sparke (0395) 442585.
 Mar 19-20. 4 NATIONS CHESS LEAGUE. Liverpool.
 Apr 1-4. WESTON-S-M. WECU Easter Congress. Richard Rendell (0793) 724039.
 May 7-8. 4 NATIONS CHESS LEAGUE. Maidstone.
 May 13-15. FROME Congress. Steve Boniface (0272) 515869.
 Oct 15-16. 12th MARLWOOD Schools Tournament. David Goldring 0454 411392.

National competitions

Last year's finalists in the National Club had a easy start to their 1993-4 campaign. Clifton disposed of Gloucester by 4½-1½ in their first round match. (Clifton scores: Chris Beaumont 1; Andrew Cooper ½; Richard Haydon ½; Tim Headlong 1; Dave Collier ½; Chris Jones 1).

Other results of local teams (if your team is in a national competition and your result is not given here, please send to the Editor).

National Major (Round 1): Bow Street Village 2 Horfield 3 (Huw Oliver 0; Steve Dilleigh 1; John Richards 1; Gordon Breeze 1; Albert Camilleri 0).

National Minor (Round 1): Marlwood School 3½ Warley Quinborne 1½.

Battered in Bolton

Bristol suffered two large defeats in the second weekend of the Four Nations League at Bolton.

Bristol		NW Eagles
Andrew Law	0-1	Keith Arkell
Graham Burgess	0-1	Jeff Horner
Simon Ansell	1-0	G Quillan
Chris Beaumont	1-0	J Carleton
Mike Truran	0-1	John Littlewood
Peter Richmond	0-1	A Smith
Jane Richmond	0-1	D Knox
K Brown	0-1	Ruth Sheldon
	2-6	

Bristol		Invicta Knights
Andrew Law	0-1	John Emms
Graham Burgess	0-1	Chris Ward
Chris Beaumont	0-1	Neil McDonald
Simon Ansell	½-½	I Watson
Mike Truran	0-1	S Bibby
Tim Headlong	½-½	A Hanreck
Jane Richmond	0-1	N Dickenson
Peter Richmond	0-1	Harriet Hunt
	1-7	

Simon Ansell, making his debut for the Bristol team, was the side's top scorer with 1½/2.

One of the players Bristol was hoping to recruit at the start of the season, Stuart Conquest, turned out for Barbican on board 2.

Bristol will be hoping for better luck at the next weekend (22-23 January) when they will be at "home" in Cheltenham, sponsored by Eagle Star.

	P	W	D	L	F	A	P
Invicta Knights	4	3	1	0	20½	11½	7
Barbican	4	3	0	1	21	11	6
Covent Garden	4	2	1	1	14	18	5
Northwest Eagles	4	1	1	2	17	15	3
Bristol	4	1	0	3	11	21	2
Slough	4	0	1	3	12½	19½	1

Bristol KO Cup

Second round draw: Horfield v University (1 Feb); Clifton v Bath or Harambee (3 Feb); Sea Mills v Grendel (2 Feb); Nailsea or Royals v Downend (31 Jan or 3 Feb).