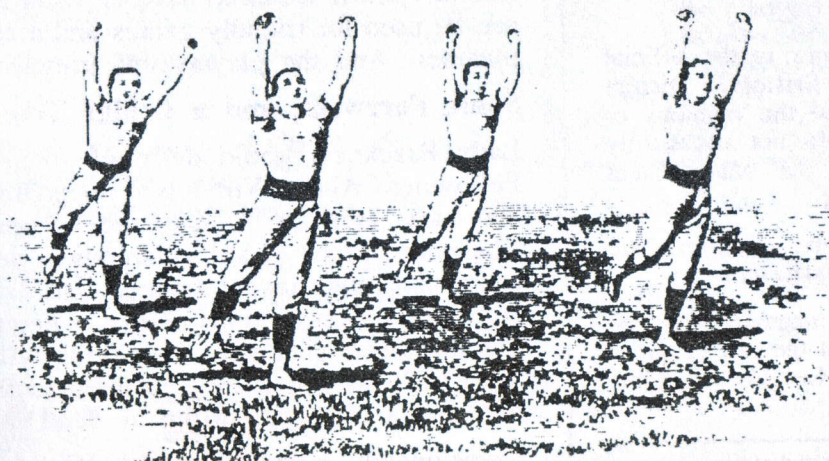


No: 98, May 1994

Bristol **CHESS TIMES**

The Magazine of the Bristol & District Chess League

Downend - Champions!



80p

Latest league tables - plus all results

*plus - East Devon, League
Congress reports - 16 games!*



Alan Williams to be English
Bridge Supremo (page 2)



Exclusive: new proof that magnetic
boards existed in the Middle Ages

Bristol CHESS TIMES

Editor: John Richards
7 Maycliffe Park, Bristol,
BS6 5JH. Tel: 0272 551912

Subscriptions: £8.00 for ten issues (posted to a home address) or £6.00 for ten issues (collected from a Bristol League club). Send cheques payable to the Bristol & District Chess League to the Editor.

Printed by: Everest, 195 Cheltenham Road, Bristol BS6 5QX

Advertising: rates are available on request from the Editor.

Bristol Chess Times is the official magazine of the Bristol & District Chess League, but the opinions of the contributors do not necessarily reflect those of the Management Committee.

Games listings and diagrams are created using ChessBase.

No parts of this magazine may be reproduced without the prior express permission of the League. All rights reserved. © 1994.

CONTENTS

- 2 Editorial
- 3 Roy's route to Bristol title
- 7 Radford wins four-way tie break
- 10 Results
- 11 No Dilleigh dallying at East Devon
- 14 Junior Chess
- 15 Letters to the Editor
- 16 Books
- 19 League tables
- 20 Diary, National League

Next issue: 7th September, containing an in-depth report on WECU Easter Congress, Frome, AGM news, Frank Palm on German league chess and lots more.

Please send in articles, news, etc. for the next issue by 18th August.

EDITORIAL

Downend - Champions!

At the start of the season, I predicted that this season could be the one when Clifton failed to win the League, but I thought the University, headed by Hennigan and Ansell, would be the team to do it. Downend proved you don't need the British Champion on Board One to win the Bristol League and strolled to the title. I'm sure this will be a popular result. With all due respect to Clifton, who have been worthy winners for many years, people like to see a change and it has to be healthy for league competition.

Downend is a popular, well-run, club that other teams like to visit. It seems to have an ideal layout: a bar that can be used for friendly games and a separate room for matches. And the players are friendly, too.

Some Farewells, and a Bridge Too Far

Lady Bracknell would definitely consider it careless. Following Alan Williams' resignation as General Secretary (see BCT 97), the League has lost its Chairman. Mike Wood is standing down after many years of service to the League. His friendliness, good humour, fairness, and his ability to handle people, made him the ideal chairman. His skills will be missed on the LMC, but I will look forward to the odd drink or two and a chat with Mike at the Downend bar.

Unfortunately, a chat with Alan Williams will be much more difficult as he is leaving Bristol. Very few of us get the chance of making a living out of the game we love, but Alan has been offered the job of running the English Bridge Union and will be moving to Buckinghamshire in a few weeks. Our best wishes to him in the new venture.

Another player leaving after this season is the IM and British Champion, Michael Hennigan. One of the game's nice guys, Michael is always ready to talk to his opponents, regardless of grade, and it's been Bristol's good fortune to have him playing in the League.

Don't Forget

It's AGM time again. Watch out for the notices of motions and come along to the Students' Union on the 25th May to exercise your democratic rights.

Summertime...

...and time for BCT's annual break. The next issue will be out in early September. Have a good summer!

John Richards

Roy's route to Bristol title

The story of the top section of the Bristol League Congress - concluded.

John Richards

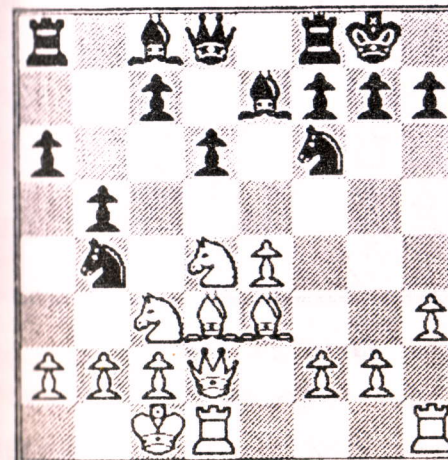
Round Three

Tyson Mordue beat Martyn Sellars to become sole leader. Roy Phillips kept in touch with a convincing demolition of Roger Hardy's queen-side.

Roger Hardy - Roy Phillips Round 3

1.e4 e5 2.♘f3 d6 3.d4 exd4 4.♙xd4 a6 5.♗e3 ♘c6 6.♙d2 ♘f6 7.♘c3 ♗e7 8.h3 0-0 9.0-0-0 b5 10.♗d3 ♖b4 11.♘d4?

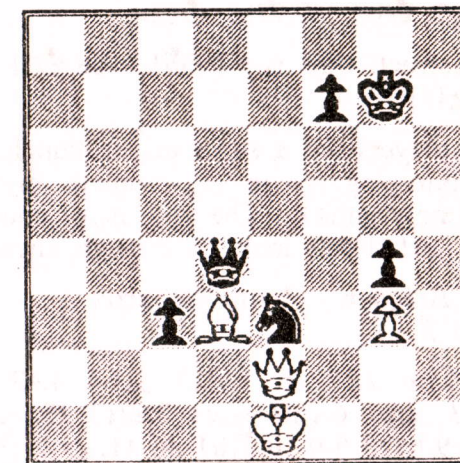
This reasonable-looking move enables Roy to get his pawns storming forward. Safer is 11.♗b1



11...c5 12.♘f5 ♗xf5 13.exf5 d5 14.♗g5 d4 15.♗xf6 ♗xf6 16.♘e4 ♘xa2+ 17.♗b1 ♖b4 18.♘xc5 ♙a5 19.♙f4 ♙a2+ 20.♗c1 ♙a1+ 21.♗d2 ♙xb2 22.♘e4 ♗ac8 23.♘xf6+ ♗xf6 24.♙g3+ ♗h8 25.♗c1 ♗fe8! 26.♙f3 ♗c3! 0-1.

Meanwhile, Bernie Hong managed to win a tricky pawn ending.

Mike Rodic - Bernie Hong Round 3



43...c2 44.♗xc2 ♙c3+ 45.♗f2 ♙xc2

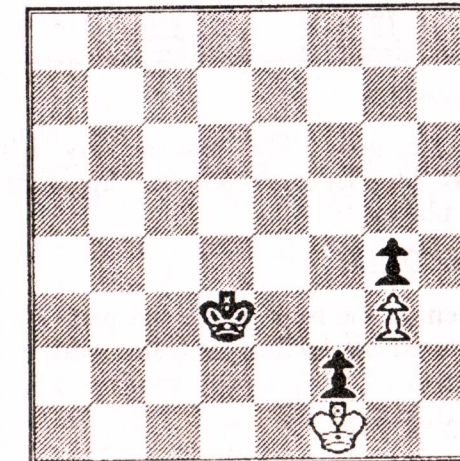
Bernie chooses to play the pawn ending. 45...♘xc2 46.♙xg4+ ♗f8 may give White some drawing chances.

46.♙xe3 ♙xe2+ 47.♙xe2 ♗f6 48.♗d3 ♗e5 49.♗e3 f5 50.♗d3 f4 51.♗e2 f3+!

51...fxg3?? leads to a draw. 52.♗f1 ♗f4 (52...♗e4 53.♗g2 ♗f4=) (52...g2+ 53.♙xg2 ♗f4 54.♗f2=) 53.♗g2=

52.♗e3 ♗d5 53.♗d3 ♗e5 54.♗e3 ♗c4 55.♗f2 ♗d4? Quicker is 55...♗d3 56.♗f1 f2!

56.♗f1 ♗d3 57.♗f2 ♗d2 58.♗f1 Now Black has to triangulate. 58...♗c3 59.♗f2 ♗d3 60.♗f1 f2! 1-0



A text-book example. Black wins after 61.♙xf2 ♖d2 62.♙f1 ♖e3 63.♙g2 ♖e2 64.♙g1 ♖f3 65.♙h2 ♖f2 66.♙h1 ♖xg3 67.♙g1

Then 67...♙f3? is a mistake 68.♙h2 g3+?? (68...♙f2! rescues the win 69.♙h1 ♖g3 70.♙g1 ♖h3) 69.♙h1 ♖f2=

The correct way is 67...♙h3 68.♙f1 g3 69.♙g1 g2

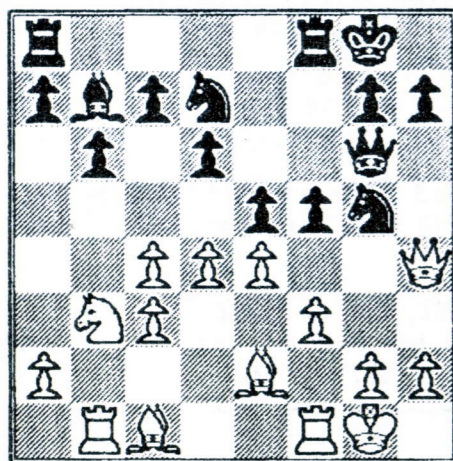
Chess-players are a superstitious bunch. In the following game, I counted myself desperately unlucky. The truth is, of course, that I just didn't look far enough ahead.

Mike Brigden - John Richards
Round 3

1.d4 ♖f6 2.c4 e6 3.♗c3 ♖b4 4.e3 b6 5.♖d3 ♖b7 6.♗f3 ♖e4 7.♙c2 f5 8.0-0 ♖xc3 9.bxc3 0-0 10.♖b1 d6 11.♗d2 ♙h4 12.f3 ♗g5 13.♗b3 ♗d7 14.♙f2 ♙h5 15.♖e2 ♙g6 16.♙h4 e5

I was besotted with the idea of a combination involving a knight sac on e4.

17.e4



17...♗xe4??

And here goes. The reason why it's a hideous blunder was not yet apparent to either player.

18.fxe4 ♖xe4

Threatening the rook on b1 and mate on g2. I wandered off feeling the game was in the bag.

19.♖f3 ♖xb1

I wonder if Mike's going to resign now...

20.♖h5!

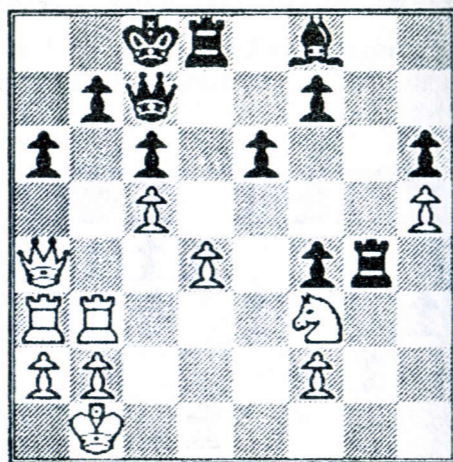
Aaaargh. This can't be happening to me.

20...♙e6 21.d5 ♙f6 22.♖g5

trapping the queen, and White went on to win. Mike tried to console me afterwards, but it was very difficult.

Jerry Humphreys - David Egginton
Round 3

1.e4 c6 2.d4 d5 3.♗c3 dxe4 4.♗xe4 ♖f5 5.♗g3 ♖g6 6.♗f3 ♗d7 7.h4 h6 8.h5 ♖h7 9.♖d3 ♖xd3 10.♙xd3 e6 11.♖e3 ♗g6 12.0-0-0 ♗g4 13.♖he1 ♙c7 14.♗e4 ♗xe3 15.♖xe3 0-0-0 16.♙b1 ♗f6 17.♗xf6 gxf6 18.c4 ♙b8 19.♙b3 ♖g8 20.g3 ♙b6 21.♙c2 ♙a5 22.c5 ♙c7 23.♖a3 f5 24.♖dd3 f4 25.♙a4 a6 26.♖db3 ♗c8 27.g4 ♖xg4



28.♖xb7! ♙xb7 29.♖b3 ♙xb3

If 29...♙c7 30.♙xa6+ ♗d7 31.♗e5+

30.♙xc6+ ♙b8 31.axb3 ♖g7 32.♙b6+ ♗c8 33.♗e5 ♖d5 34.c6 f6 35.♙xa6+ ♙b8 36.♗d7+ ♖gxd7 37.cxd7 ♖xd7 38.♙xe6 ♗c7 39.♙xf6 ♖g7 40.♙xf4+ ♗c6 41.♙e4+ ♙b6 42.d5 ♗c7 43.♙c4+ ♗d8 44.b4 ♖f7 45.d6 1-0.

Leaders: Mordue 3; Phillips 2½; Sellars, Hong, Johnson, Dilleigh, Boyce, Lesniowski 2.

Round Four

Round 4 saw the top board pairing of Mordue v Phillips. The game was a long affair, and had a dramatic finish. Controller Steve Boniface takes up the story:

"In the fourth round Roy Phillips had an epic struggle against Tyson Mordue, which attracted a large crowd in the closing stages. This was a hectic queen and pawn ending in which both sides were short of time, and though Roy eventually made a passed pawn, it seemed that Tyson could check, pin, or block in sequence. The only other game at the time was Steve Dilleigh versus Bernie Hong, which seemed quite peaceful. Roy's pawn had by now progressed a fair way up the board, and Tyson seemed to be running out of stopping moves. I heard the word "draw", Tyson stopped the clocks and the players started talking. Assuming this was an agreement, I went over to the Dilleigh game to check on a possible dispute there. This proved to be unimportant, so I returned to board one.

"Now Tyson was clearly asking for the Controller and claiming a draw by repetition. Roy disputed this. Although the moves were not being recorded by either player or myself - as usual in the *final* time scramble - it appeared that Roy's pieces were making steady advances, so that a threefold occurrence was unlikely. One witness (later supported by another) reckoned there had been no repetition. In the absence of written evidence, I explained to the players that the game would have to continue. Naturally Tyson was unhappy, and the game continued for a short time before his flag fell.

"On a point of Law, there is no technical requirement for the player to write down the moves in the last five minutes of a time control, even if he wishes to make a repetition claim. However, it is clearly in his interest to do so, and the rules for the congress stated explicitly that such claims would not be entertained. However, if this had been witnessed, I would have allowed the appeal. Neither I nor the witnesses nor Roy believed this. Technically this was an incorrect claim and I could have added five minutes to Tyson's clock, thus forcing him to lose on time immediately. I chose instead

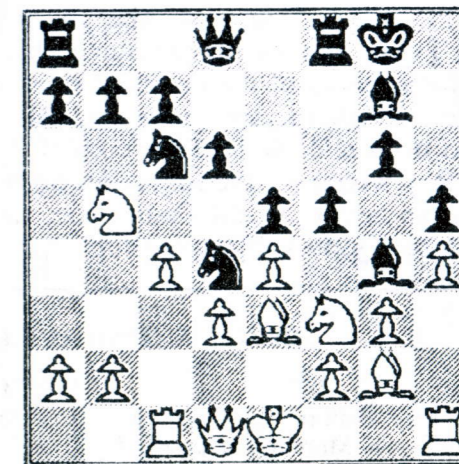
to treat it as a claim that could not be substantiated, thus letting the game continue. Probably this was wrong, because had Roy's flag then fallen first, Tyson, with a queen on the board, could have claimed he had winning chances!! (I suspect I would have given a draw).

"The five minute penalty sounds harsh, but it does stop frivolous claims in a time scramble which can give a player time to think. This was not the case here. Tyson thought he had seen a repetition, and this cannot be categorically ruled out. However the balance of evidence was against the claim, hence the ruling."

With Tyson stalled, Martyn Sellars seized the opportunity to get into joint second place.

Martyn Sellars - Richard Johnson
Round 4

1.♗f3 d6 2.c4 g6 3.♗c3 ♖g7 4.d3 e5 5.g3 ♗e7 6.♖g2 ♗bc6 7.h4 h5 8.♖d2 ♗d4 9.e4 ♖g4 10.♖c1 0-0 11.♖g5 f6 12.♖e3 ♗ec6 13.♗b5 f5

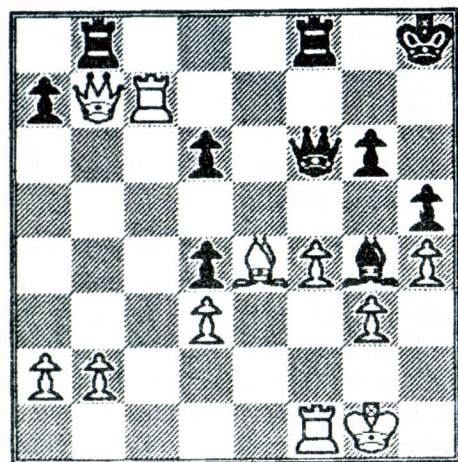


Black's position looks good. The White king is still in the centre and the Black pawns are sweeping down the board. Martyn finds some counterplay based on the holes left by the advancing Black pawns.

14.♗bxd4 ♗xd4 15.♖xd4 exd4 16.♙b3 fxe4 17.c5+ ♙h8 18.♗g5 ♙f6

If 18...exd3 19.♗f7+

19.♗xe4 ♖ae8 20.0-0 ♙e7 21.♙xb7 dxc5 22.♖xc5 ♖e5 23.f4 ♖d6 24.♗xd6 cxd6 25.♖c7 ♙f6 26.♖e4 ♖b8



27. ♖xa7

Martyn misses the quickest way to win. 27. ♖h7+ ♕g8 28. ♗d5+ ♗c6 29. ♗xe6+ ♗xe6 30. ♗g7+

27... ♖xb2 28. ♖h7+ 1-0

Leaders after Round Four: Phillips 3½; Mordue, Sellars 3; Boyce, Dilleigh, Hong, Humphreys, Lesniowski 2½.

Round Five

Roy Phillips had to play Martyn Sellars, while Tyson Mordue played Steve Dilleigh. The mathematics of the tie-break rules were simple enough on this occasion. All Roy had to do was draw because even if Tyson won, Roy would get the trophy on tie-break. If Martyn beat Roy and Tyson won, then it would be Tyson's championship.

Steve Dilleigh dropped material and resigned to Tyson just after the time control, and so attention shifted to the top board. Martyn Sellars was trying to grind out an advantage in a blocked position, but no matter how he wriggled, Roy managed to parry the threats. Eventually, Martyn pushed so hard he self-destructed and resigned on the 58th move, leaving us with a new Bristol champion. The way Roy has improved over the last two seasons, I think it's unlikely to be his last championship.

All the games in the last round were decisive - has no one heard of the quick final round draw when nothing is at stake? - but the only publishable one was the following.

Mike Rodic - Roger Hardy
Round 5

1.d4 ♖f6 2.c4 g6 3.♗c3 ♗g7 4.e4 d6 5.♗d3 e5 6.d5 0-0 7.♗g5 a5 8.♗d2 ♖a6 9.f3 ♗e8 10.g4 c6 11.♗ge2 cxd5 12.cxd5 ♗d7 13.♗f2 b5 14.♖ag1 b4 15.♗d1 ♗b5 16.♗b1 ♗h8 17.♗g3 a4 18.h4 b3 19.a3 ♗c5 20.h5 ♗b6 21.♗e3 ♗h6 22.♗g2 ♗xe3 23.♗xe3 ♗a6

continued on next page

Bristol & District League Congress 1994 - Section One

Pos			1	2	3	4	5	6	7	8	9	10	11	12	13	14	15	16	17	18	Bye	Total
1	Roy Phillips	Grendel	x	1	½		1									1	1					4½
2	Tyson Mordue	Downend	0	x			1		1		1	1										4
3	Jerry Humphreys	Downend	½	x	0		1						1	1								3½
4	P Lesniowski	University		1	x	½	½			1												3½
5	Richard Johnson	Grendel			½	x	0		1	½				1								3
6	Martyn Sellars	Horfield	0	0		1	x				1				1							3
7	Jim Boyce	Clifton		0	½		x	½		1												2½
8	Dave Collier	Clifton				0		x									0	1	½	1		2½
9	Steve Dilleigh	Horfield		0		½	½		x	½										1		2½
10	Bernie Hong	University			0		0		½	x		1								1		2½
11	Dave Osborne	Grendel		0				0			x	½				1	1					2½
12	Mike Rodic	Clifton		0						0	x		1	1	½							2½
13	Mike Brigden	Downend				0					½	x	½	0						1		2
14	David Egginton	Nailsea		0		0						½	x		1	½						2
15	Roger Hardy	Sea Mills	0	0						0	1		x								½	1½
16	Phil Nendick	Horfield							1		0	0		0		x					½	1½
17	Ian Pickup	?							0	0	0	½						x			1	1½
18	John Richards	Horfield		0					½		0	0	½						x			1

Radford wins four-way tie break

Section Two of the Bristol & District League Congress 1994

Andy Nicholls

This tournament was very closely contested by twenty five players from some fifteen clubs, with Cossham, Grendel and the University strongly represented. A total of fifty five games were played over the weekend and, in the opinion of your correspondent (I am a relative newcomer to the League), the standard of play was consistently high. But I can tell you for nothing that not everyone agrees with this!

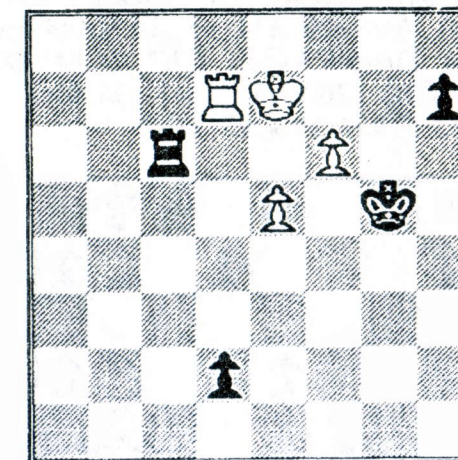
Selected games:

R P Radford - A V Smith
Section 2, Round 1 1994

A typical pawn blitz against the Alekhine, but it was fine positional play that earned the full point.

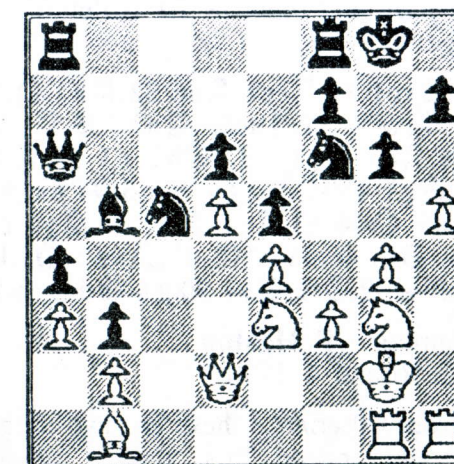
1.e4 ♖f6 2.e5 ♗d5 3.♗f3 d6 4.♗c4 c6 5.♗c3 ♗xc3 6.bxc3 d5 7.♗b3 ♗g4 8.h3 ♗h5 9.g4 ♗g6 10.h4 ♗d7 11.e6 fxe6 12.♗d4 ♗c5 13.h5 ♗f7 14.♗e2 ♗d7 15.d3 e5 16.♗f5 e4 17.♗f4 e6 18.♗g3 exd3 19.cxd3 ♗d6 20.♗xd6 ♗xd6 21.d4 ♗xb3 22.axb3 ♗d7 23.♗e5 ♗xe5+ 24.dxe5 a5 25.♗d2 c5 26.♖a4 b5 27.♖f4 ♖h8 28.♖a1 ♗e7 29.♗e2 g6 30.hxg6 ♗xg6 31.♖xf8 ♗xf8

32.b4 cxb4 33.cxb4 a4 34.♗d4 ♗e7 35.♗xb5 ♖b8 36.♗d4 ♗e8 37.b5 ♗xb5 38.♗xb5 ♖xb5 39.♖xa4 ♗f7 40.♖f4+ ♗g7 41.♖f6 ♖b6 42.f4 ♖b2+ 43.♗c3 ♖g2 44.g5 ♖f2 45.♗d4 ♖f1 46.♗e3 ♖e1+ 47.♗d4 ♖f1 48.♗c5 ♖c1+ 49.♗d6 d4 50.♗xe6 d3 51.♖f7+ ♗g6 52.f5+ ♗xg5 53.♖d7 ♖c6+ 54.♗d5 ♖c2 55.f6 d2 56.♗e6 ♖c6+ 57.♗e7 1-0



Section One Report

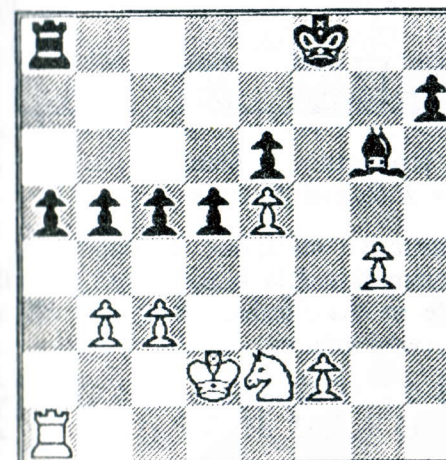
continued from previous page



24.♗ef5! ♖a7

If 24...gxf5 25.♗g5+

25.♗g5 ♗e8 26.♗e7+ 1-0

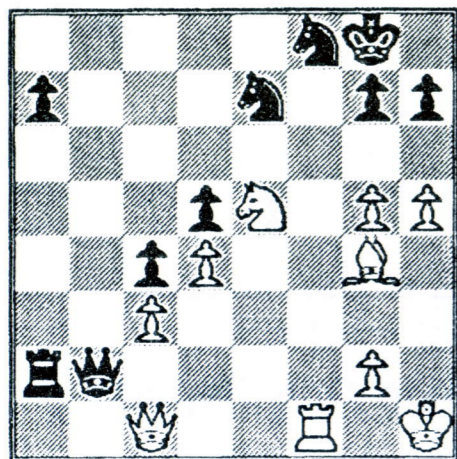


If 57... ♖c7 58. ♖xc7 d1♔± Fritz computer.

S C Roberts - P Chaplin
Section 2 Round 1 1994

Commiserations to Steve Roberts, who missed a mate in ten when under pressure from Peter Chaplin. (Yes, a mate in ten!!)

1.e4 c5 2.f4 ♘c6 3.c3 ♘f6 4.d3 e6 5.♘f3 ♘e7 6.♗e2 d5 7.e5 ♘d7 8.0-0 f6 9.d4 0-0 10.♖h1 ♖b8 11.♗e3 c4 12.♘bd2 b5 13.♙c2 b4 14.exf6 ♗xf6 15.♘g5 ♗xg5 16.fxg5 bxc3 17.bxc3 ♘e7 18.♗g4 ♖xf1+ 19.♖xf1 ♘f8 20.♗f4 e5 21.♗xc8 exf4 22.♗g4 ♘eg6 23.♘f3 ♖b7 24.h4 ♙b8 25.h5 ♖b2 26.♙c1 ♘e7 27.♘e5 f3 28.♘f3 ♖xa2 29.♘e5 ♙b2



White to play and mate in 10. Solution on back page.

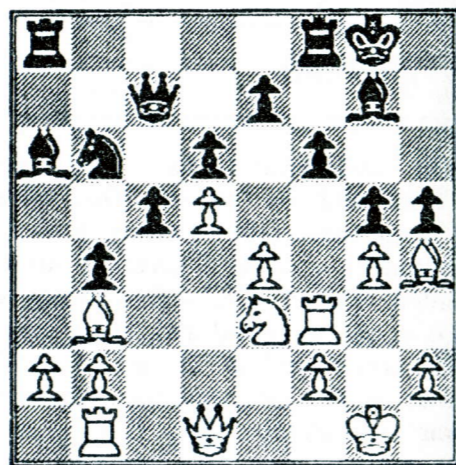
30.♗h3 ♙xc1 31.♖xc1 ♖a6 32.♖b1 ♘c6 33.♖e1 ♘xe5 34.♖xe5 ♖a3 35.♖xd5 ♖xc3 36.♖c5 ♖c1+ 37.♖h2 c3 38.♖c8 ♖f7 39.♖g3 ♘e6 40.g6+ hxg6 41.hxg6+ ♖e7 42.d5 ♘d4 43.♖c4 ♖d1 44.♗g4 c2 45.♖c7+ ♖f6 46.d6 c1♙ 47.♗xd1 ♙xd1 48.d7 ♘f5+ 49.♖f2 ♖e7 50.g4 ♙d4+ 0-1.

C D Thomas - P Heaton
Section 2 Round 4 1994

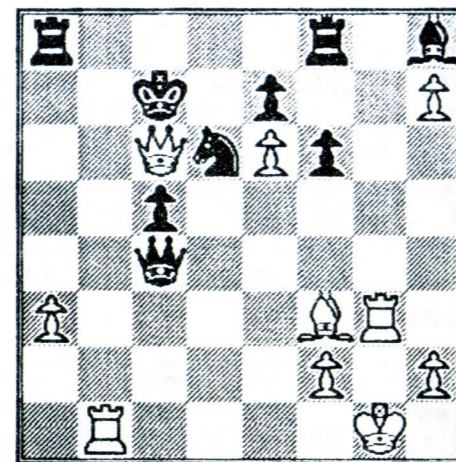
I know from experience these are two tough cookies, and indeed this was a titanic struggle. White 'lost' a bishop, but gained compensation, and soon the Black king was a moving target for White's big guns. Brilliancy or blunder? - you be the judge.

1.d4 ♘f6 2.♘f3 g6 3.♗g5 ♗g7 4.e3 d6 5.♗c4 0-0 6.♘bd2 ♘bd7 7.♗b3 c5 8.c3

b6 9.d5 b5 10.e4 ♘b6 11.0-0 a6 12.♖e1 a5 13.♘f1 ♘fd7 14.♘3d2 b4 15.cxb4 axb4 16.♖b1 ♗a6 17.♖e3 ♘e5 18.♘f3 ♘xf3+ 19.♖xf3 ♙c7 20.♘e3 h5 21.g4 f6 22.♗h4 g5



23.gxh5 gxh4 24.♘f5 ♖f7 25.♘xh4 ♖e8 26.♘f5 ♗h8 27.♖g3 ♗c8 28.♘g7+ ♖d8 29.h6 ♗d7 30.♙f3 ♙c8 31.h7 ♖c7 32.♖c1 ♖b7 33.♘e6 ♗xe6 34.dxe6 ♖c7 35.♙f5 ♙e8 36.a3 bxa3 37.bxa3 ♖b7 38.♖b1 ♖c7 39.♗d1 ♙c6 40.♗f3 ♘c4 41.e5 ♙a6 42.exd6+ ♘xd6 43.♙d5 ♙c4 44.♙c6+ 1-0.

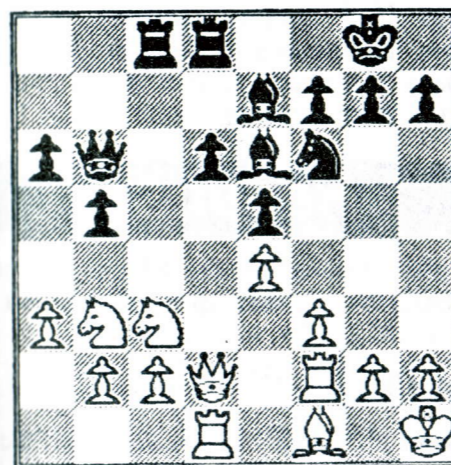


Shane Roberts - P Chaplin
Section 2 Round 5 1994

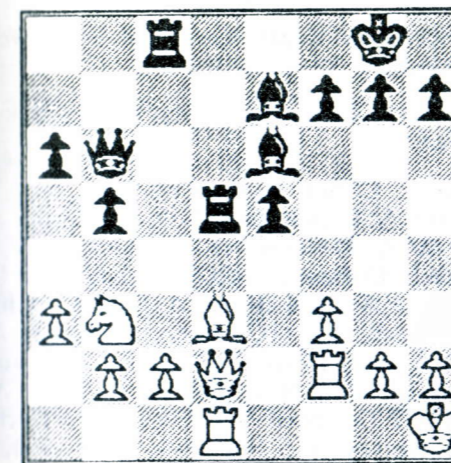
An instructive miniature demonstrating the old maxim that Black does well if ...d5 is playable in the Sicilian. Rounded off with a neat combination.

1.e4 c5 2.♘f3 d6 3.d4 cxd4 4.♘xd4 ♘f6 5.♘c3 a6 6.♗e3 e5 7.♘b3 ♗e6 8.♗e2

♗e7 9.♙d2 ♘bd7 10.f3 b5 11.a3 ♖c8 12.0-0 0-0 13.♖ad1 ♙c7 14.♖f2 ♖fd8 15.♗f1 ♘b6 16.♗xb6 ♙xb6 17.♖h1



17...d5 18.exd5 ♘xd5 19.♘xd5 ♖xd5 20.♗d3



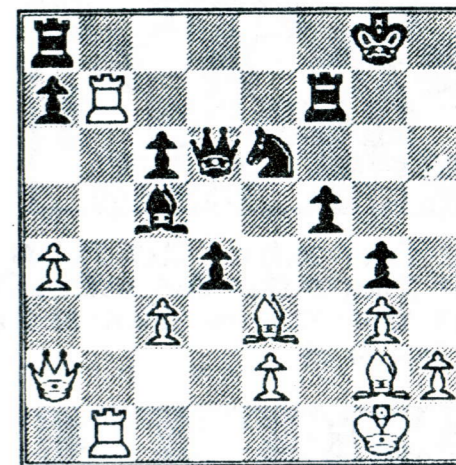
20... ♖xd3 21.♙xd3 ♙xf2 22.♘d2 ♖d8 0-1.

P Brooks - R Radford
Section 2 Round 4 1994

Bob Radford's road to victory saw him: *axe* the Alekhine's Defence of Alan Smith; *defeat* Paul Heaton in a very fraught French with both players running too short of time to record the moves, and *rob* Shane Roberts with a Sicilian.

In Rounds 4 and 5, the opposition was even stronger and subsequent analysis of this game using the Fritz computer reveals that White missed a tactical win after 25 moves. Readers who are feeling sharp may try and find this improvement from the diagram.

1.c4 ♘f6 2.♘c3 e5 3.g3 d5 4.cxd5 ♘xd5 5.♗g2 ♗e6 6.♙a4+ c6 7.♘f3 ♗d6 8.0-0 0-0 9.d3 ♘d7 10.♘g5 ♘xc3 11.bxc3 ♘c5 12.♘xe6 ♘xe6 13.♗e3 f5 14.♙b3 ♙d7 15.♖ab1 ♖f7 16.♗h3 g5 17.f3 h5 18.a4 ♙e7 19.♖b2 ♘c5 20.♙a2 g4 21.fxg4 hxg4 22.♗g2 ♘e6 23.♖fb1 ♗c5 24.d4 exd4 25.♖xb7 ♙d6



White to play and win. Solution on back page.

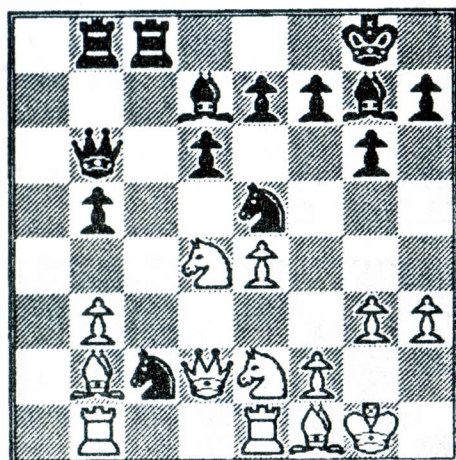
26.cxd4 ♗xd4 27.♙d2 ♖d8 28.♗xd4 ♙xd4+ 29.♙xd4 ♘xd4 30.♖xf7 ♖xf7 31.♖b7+ ♖e6 32.♖f2 a5 33.♖a7 ♖c8 34.♖xa5 c5 35.e3 ♘b3 36.♖a6+ ♖e5 37.♖c6 ♖d8 38.♗f1 ♖d2+ 39.♖g1 ♖d1 40.♖f2 ♖d2+ 41.♖g1 ♖d1 42.♖f2 ♖d2+ 43.♗e2 ♖d5 44.♖c8 ♖a2 45.♖d8+ ♖c6 46.♖d1 ♖xa4 ½-½

Paul Brooks won his last round game to finish equal first.

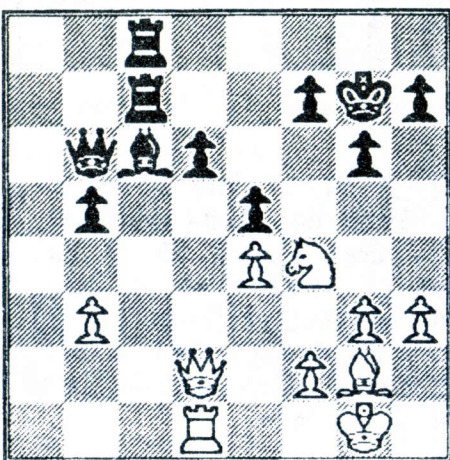
R Radford - R Morgan
Section 2 Round 5 1994

Again, this was looking desperate for Radford after 25 moves, but an ingenious knight sacrifice led to a draw by force and the "Silver Queen" trophy.

1.d4 ♘f6 2.♘f3 g6 3.g3 ♗g7 4.♗g2 0-0 5.0-0 d6 6.♘c3 ♘bd7 7.♖e1 c5 8.e4 cxd4 9.♘xd4 ♖b8 10.♗e3 a6 11.a4 ♘e5 12.♖b1 ♘c4 13.♗c1 ♗d7 14.b3 ♘a5 15.♙d3 ♘c6 16.♘f3 b5 17.axb5 axb5 18.♗b2 ♘b4 19.♙e2 ♙c7 20.♘d4 ♙b6 21.♙d2 ♖fc8 22.♗f1 ♘g4 23.♘ce2 ♘xc2 24.h3 ♘e5



25. ♖g2 ♜xe1 26. ♞xe1 ♞c7 27. ♜f4 e6
28. ♞d1 ♞bc8 29. ♜b4 ♜c5 30. ♜d2 ♜c6
31. ♜d3 ♜b6 32. ♜xc6 ♞xc6 33. ♞xg7
♜xg7 34. ♜f4 e5



35. ♜h5+ ♞xh5 36. ♜g5+ ♜h8 37. ♜f6+
♜g8 38. ♜g5+ ♜h8 39. ♞xd6 f6 40. ♜xf6+
♞g7 41. ♞d7 ♞cg8 ½-½.

Roger Morgan must have hoped for better than first equal. Devon Thomas survived a last round Paul Butterworth 'blitzkrieg' to also finish first equal. Congrats to all four.

Thanks to Barry Thompson for collating the games on Fritz.

Final placings:

1= R Radford *South Bristol*, P Brooks *Thornbury*, R Morgan *University*, D Thomas *Harambee* 4; 5 C A N Parker *South Bristol* 3½; 6 P Chaplin *Clevedon*, D Grossett *Clifton*, M Wood *Downend*, P Butterworth *Grendel* 3; 10 M Collier *Cabot*, B Higgins *Nailsea*, E Hill-Wood *University*, A

Nicholls *Grendel*, B Thompson *Grendel* 2½; 15 C A Parker *Hanham*, A Smith *Cossham*, Shane Roberts *Cossham*, P Heaton *University* 2; 19 H J Draisey *Horfield*, J Baker *Cossham*, D Summerill *Hanham* 1½; 22 S C Roberts *Cossham*, A Hill *Bath* 1; 25 D Woodruff *Keynsham* ½.

Results

All results received by the Match Secretary since the last issue and up to 30th April are included.

A = adjudication; C = continuation.

KO Round 3: Nailsea 1 Downend 7; Horfield 3½ University 4½; Clifton 4 Bath 4; Replay: Bath 3 Clifton 4 (1C).

KO Semi-finals: Grendel v Clifton/Bath; Downend v University (at University, 5th May).

Minor KO Semi-finals: Keynsham 5½ Clevedon 2½; Thornbury 3½ Cossham 4½.

Minor KO Final (5th May): Cossham v Keynsham.

Division 1: Clifton B 1½ Clifton A 3½ (1C); University A 1 Downend A 5; Sun Life A 2 Clifton A 4; Downend A 3½ Clifton B 2½; Clifton A 1 Clifton B 3 (2C); Grendel A 5 Bath 1; Downend A 2½ S Bristol A 2½ (1C); Clifton B 4 University A 1 (1C); Bath 2 Downend A 4; Grendel A 1½ Clifton B 2½ (2C); S Bristol A 2½ Bath 2½ (1C); Sea Mills A 2 Clifton A 4; Grendel A 2 Downend A 4; Clifton B 3 Horfield A 3; University A 5 Sea Mills A 1; Bath 3½ University A 2½; Sea Mills A 1½ S Bristol A 4½; Clifton A 6 Sun Life A 0; Horfield A 1½ Downend A 4½; S Bristol A 1½ Clifton B 4½; Sun Life A ½ Grendel A 5½; University A 3½ Clifton A 2½; Grendel A 5½ University A ½; Downend A 4 Clifton A 2; Bath 2 Horfield A 3 (1C); Clifton B 5½ Sea Mills A ½; S Bristol A 4 Sun Life A 2; Clifton A 2½ Bath 1½ (2C); Grendel A 1½ Horfield A 4½; Downend A 5½ Sea Mills A ½; Bath 2 Clifton B 4; Sea Mills A 2½ Sun Life A 3½; Clifton A 4 S Bristol A 1 (1C); Horfield A 3½ University A 1½ (1C); S Bristol A 4 Grendel A 2; Sun Life A 2½ Bath 3½; Clifton B 3½ Downend A ½ (2C).

Division 2: Downend B 1½ Horfield B 4½; Hanham A 3 S Bristol B 3; Nailsea A 2½ Thornbury A 3½; Grendel B 3 Keynsham A 3; Downend B 2½ Hanham A 3½; S Bristol B 5 Horfield B 1; Cossham A 3 Nailsea A 3; Horfield B 3 Downend B 3; Hanham A 4 Keynsham A 2; Cossham A 4½ S Bristol B 1½; Clevedon A 2½ Downend B 3½;

cont. on page 13

No Dilleigh dallying at East Devon

Steve Boniface

THE NINETEENTH EAST DEVON Chess Congress took place in Exeter on the first weekend of March 1994 with 225 competitors, a big increase on last year's entry. The top section became "Stars-Barred" and a new Intermediate Tournament was launched. This, together with the resurgent interest from the World Championship, led to near-record numbers and close competition.

In the absence of all titled players, the new Premier section was led by Roland Cole and Horfield's Steve Dilleigh, who won the first four games and then decided to share the spoils. They were caught by P Cooksey who fought hard to win his last game.

The Major tourney is always fiercely contested, and this year was no exception. Russell Goodfellow and Dave Wood did not meet each other, but thoroughly deserved their joint first place. Many years of organising this event did not deter Dave Beckwith from competing and winning the grading prize.

In the Intermediate and Minor sections there were clear winners on maximum points in D Hodge and J Balem respectively, whilst the veterans' award went to G Moses. In a new departure, ungraded players in the Minor Section were eligible to compete for a special prize only, and this was taken by B Wilkinson. The Team competition was won by the Sidmouth Club.

PREMIER: 1= Steve Dilleigh *Horfield*, R B Cole *Truro*, P Cooksey *Newbury* 4½; 4 R Newton *Morecambe* 4; Grading: P Briggs *Tamworth*, J Crampton *Palace*.

MAJOR: 1= R R Goodfellow *Tunbridge Wells*, D C Wood *Burnham-on-Sea* 4½; 3= Andy Nicholls *Grendel*, I Annetts *Tiverton*, L Collier *W Midlands*, K Moran *White Swan* 4; Grading: D Beckwith *Exeter*.

INTERMEDIATE: 1 D Hodge *Teignmouth* 5; 2= C Walker *Sidmouth*, I Taggart *Exeter* 4½; 4= G Jenkins *Exeter*, J Seale *Truro* 4; Grading: A Huntley *Basingstoke*, C Edwards *Totnes*.

MINOR: 1 J Balem *Weymouth* 5; 2 L Fancourt *Courtaulds* 4½; 3= Y Eltesham *Exeter*, G Rowan *Penrith*, G Steer *Street* 4; Grading: W Upton *S Norwood*, C Muskett *Newquay*; Best ungraded player: B Wilkinson *S Hams*; Veterans: G Moses *Bridgend*.

All sections played over five rounds.

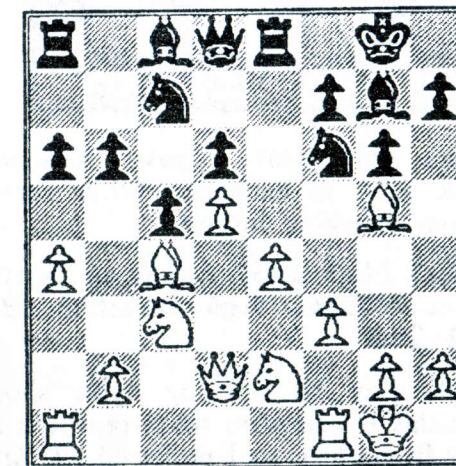
Steve Dilleigh had an excellent result. Here are two of his games, with his own notes:

R Newton - Steve Dilleigh
East Devon Premier (2), 1994

1.d4 ♜f6 2.c4 g6 3.♜c3 ♞g7 4.e4 d6 5.f3 0-0 6.♞e3 c5 7.d5

White can grab the pawn on e5 and try to hold on to it, but my opponent prefers to go for an attacking game.

7...e6 8.♜d2 exd5 9.cxd5 ♞e8 10.a4 ♜a6 11.♞c4 ♜c7 12.♜ge2 a6 13.0-0 b6 14.♞g5



Events usually develop slowly in this variation. White has a solid position and good attacking chances in the long term.

Black needs to develop counterplay before White's attack gets going. This usually involves playing ...b5 or ...f5. White's ♖c4 helps to clamp down on b5 and the ♗g5 makes ...f5 difficult to achieve. At the same time, both of these moves will be very useful if White can organise a central breakthrough with e5. I decided it was prudent to play my queen to f8 where it escapes the pin and prepares for ...f5.

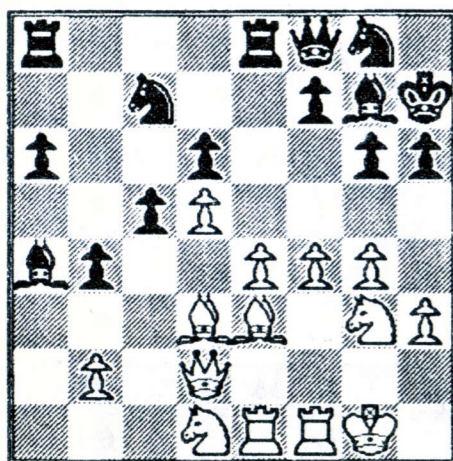
14...♖e7 15.h3

Against 15 ♖f4 I planned 15...♞d8 followed by ♗ce8, ♖f8 and h6.

15...♖f8 16.g4 h6 17.♗e3 ♖h7 18.♗g3 ♗g8

Black keeps a low profile on the king-side and relies on queen-side counterplay. If White decides not to press for a king-side attack, Black may eventually counter there with f5.

19.♞ae1 ♗d7 20.f4 b5 21.♗d3 b4 22.♗d1 ♗xa4

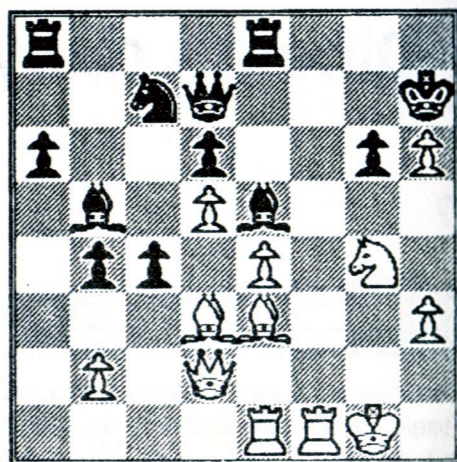


This not only wins a pawn, but also prepares ♗b5 to exchange White's most dangerous attacking bishop.

23.f5 ♖e7 24.g5 ♗e5! Blocks an e5 pawn sacrifice. 25.fxg6+ fxg6 26.♗f5!? ♖d7 27.♗f2 ♗b5

27...gxf5 may be winning (you should analyse this if you want some practice) but it is far from clear, so I preferred 27...♗b5 which I thought ought to lead to simplification and an eventual win on the queen-side.

28.♗xh6 ♗xh6 29.gxh6 c4 30.♗g4!?



My opponent agrees I am winning on the queen-side and finds an imaginative way to keep the game alive by sacrificing a piece.

30...cxd3 31.♗f6+ ♗xf6 32.♞xf6 ♞f8 33.♞ef1 ♖e7 34.♗d4 ♞xf6 35.♗xf6 ♖d7 36.♗d4 ♞e8! 37.♖f4 ♞e7 38.♞f2 d2!

This diversionary pawn sacrifice allows Black to break White's grip on the f file.

39.♖xd2 ♞f7 40.♗g7?! ♗e8 41.e5 ♞xf2 42.♖xf2 ♗xg7 43.hxg7 ♖xg7 44.♖h4+ ♗g8 45.♖d8+ ♖f8 46.♖g5

and now Black concludes the game with a series of checks.

46...♖f1+ 47.♖h2 ♖f2+ 48.♖h1 ♖e1+ 49.♖g2

If 49.♖h2 ♖xe5+

49...♗f1+ 50.♖f3 ♖e2+ 51.♖f4 ♖d2+ 52.♖g4 ♗xh3+ 53.♖h4 ♖xg5+ 0-1

D Saqui - Steve Dilleigh
East Devon Premier (4), 1994

1.e4 c5 2.♗f3 ♗c6 3.d4 cxd4 4.♗xd4 ♗f6 5.♗c3 d6 6.♗g5 ♗d7 7.f4 ♞c8 8.♗e2 a6 9.♗f3 ♖b6 10.♗b3 e6 11.♖d2 ♗e7 12.0-0-0 0-0 13.♞he1

Black's opening has not been entirely successful but at least I was able to complete my development since 13.c5? dxe5 14.♗xf6 ♗xf6 15.♖xd7 ♞fd8 would trap the White queen.

13...♞fd8 14.g4 ♗e8 15.♖g2 ♗d7?!

This attempt to equalise by exchanging pieces does not quite succeed. 15...♖c7 intending b5, b4 is more in the spirit of the Sicilian.

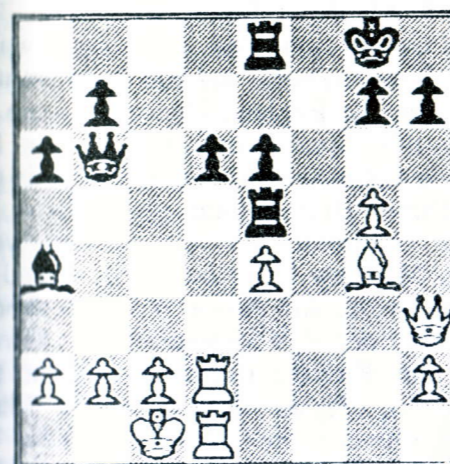
16.♗xe7 ♗xe7 17.g5 ♗c5 18.♗d4 ♗c6 19.♗xc6 ♗xc6?!

19...bxc6 offered better prospects, since the attack on the b-file is more difficult for White to defend against.

20.f5 ♗a4 21.♗xa4 ♗xa4 22.♞d2 ♞c5!

Initiating a plan of active defence - watch this rook!

23.fxex6 fxe6 24.♗g4 ♞e5! 25.♖h3 ♞e8 26.♞ed1?



The turning point. White has been somewhat better for most of the game and should now have exploited this advantage with 26.♖a3! ♖a5! and now not 27.♖xd6? ♗c6 28.♖b1? ♗d5!! with advantage to Black, but 27.b3 ♗c6 28.♖xa5 ♞xa5 29.♞xd6 when Black loses a pawn for

insufficient compensation. Black now gains the upper hand by attacking the weak pawns in White's position.

26...♖c5 27.b3 ♗c6 28.♞xd6 ♗xe4 29.♞6d2? ♞xg5?

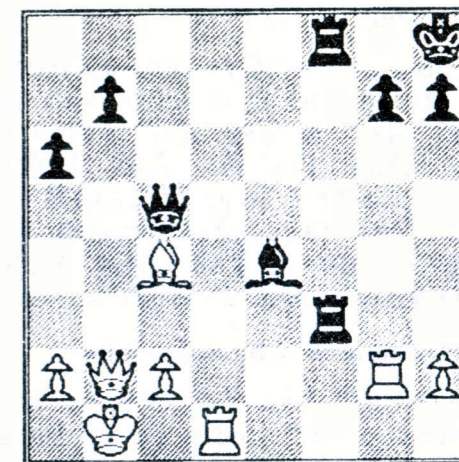
Overlooking an outright win by 29...♖a3+ 30.♖b1 ♞a5. I noticed this tactic a move later and fortunately got another chance to use it.

30.♗xe6+ ♖h8 31.♗f7 ♞f8 32.♖e6 ♖a3+! 33.♖b1 ♞a5 34.b4

Unfortunately, White now has this escape clause - Black can win a pawn, but in this position that is no guarantee of victory.

34...♖xb4+ 35.♖h3 ♖c5 36.♗c4 ♞a3 37.♖b2 ♞af3 38.♞g2??

White threatens mate but completely loses his geometric bearings.



38...♞3f6 39.♗f1 ♞b6! 0-1 The energetic rook has the last say.

Results - continued

Thornbury A 1½ Horfield B 4½; Nailsea A 4 Downend B 1 (1A); Grendel B 2½ Horfield B 3½; Hanham A 3 Cossham A 3; S Bristol B 1 Clevedon A 5; Thornbury A 3 Keynsham A 3; Downend B 3 Thornbury A 3; Horfield B 3½ Nailsea A 2½; Keynsham A 1½ Cossham A 4½; Clevedon A 3 Hanham A 0 (3A); Grendel B 3½ S Bristol B 2½; Cossham A 4½ Clevedon A 1½; Downend B 2½ Keynsham A 2½ (1A); Hanham A 3½ Thornbury A 2½; S Bristol B 5 Nailsea A 1; Cossham A 2 Horfield B 4.

Division 3: Clifton D 1½ Cossham B 3½ (1A); Thornbury B 4½ Clifton D 1½; Clifton C 2½

Cossham B 3½; Clifton C 3 University B 3; Cossham B 4 Cossham C 2; University B 4 Clifton D 2; Hanham B 3½ Clifton C 2½; Horfield C 4 University B 2; Clifton C 3½ Clevedon B 2½; Cossham C 3 Nailsea B 3; Nailsea B 2½ Thornbury B 3½; Hanham B 1½ Cossham B 4½; Clifton C 1 Horfield C 5; Clevedon B 4½ Clifton D 1½; University B 4 Hanham B 2; Clevedon B 2½ Cossham C 3½; Nailsea B 5 Clifton C 1; Clifton D 2½ Cossham C 3½; Cossham B 4 Clevedon B 2; Horfield C 3 Hanham B 2 (1A); Clifton D 1½ Thornbury B 4½; Cossham C ½ Clifton C 4½ (1A); Clevedon B 3 Nailsea B 2 (1A); Nailsea B 1 Horfield C 2 (3A).
Continued on page 17



JUNIOR CHESS

Jerry Humphreys

Thomas Lyon played well at the London Junior Chess Championships in December, and obtained a score of 5/10. Tom is a pupil at Nailsea School, and has played regularly for their Junior League team which won Division 4 this year. He is also a keen member of Opening Moves Chess Club. In this game Tom wins brilliantly against the strong 9-year old Stephen Casement from Canterbury.

T Lyon - S Casement
London Junior U-10 1994

1.d4 ♖f6 2.c4 c5 3.♗f3 cxd4 4.♗xd4 e6
5.♗c3 ♗c5 6.♗b3 ♗b4 7.♗d2 ♗c6 8.e3
b6 9.a3 ♗e7 10.♗e2 ♗b7 11.0-0 0-0
12.♗d4 ♗d6 13.♗cb5 ♗b8 14.♗xc6
dxc6 15.♗d4 ♗c7 16.g3 e5 17.♗f5 ♗c8
18.♗c2 ♗e8 19.e4 ♗e6 20.♗c1 ♗c8
21.♗xg7! ♗d8 22.♗h6 ♗h8 23.♗g5
♗g8 24.♗xe6 ♗xh6 25.♗g7+ # 1-0

West of England Championships

Twenty Bristol players attended the Junior Championships in Swindon on the 5th and 6th March. Our players were heavily outgraded but not overawed by the opposition, and we managed many high places. Jennifer Colfer (Thornbury) came 2nd in the Girls' Under 18, Oliver Bright (Keynsham) was 4th in the Under 12, Tom Bourne 4th in the under 10, and Sam Buckley (Keynsham) 4th in the Under 8. In addition, Esther Britton was 2nd in the Sunday beginners' tournament, Sam Buckley 4th in the Saturday Beginners', and Melanie Buckley 3rd in the Sunday Quickplay.

The 'adult' championships were held in Weston-Super-Mare over the Easter weekend, and four Bristol juniors took part. Peter Chaplin (Clevedon) scored 3½/7 in the Major (Under 160), while in the Minor (Under 125) David Buckley scored 4½ and

won the grading prize, Simon Buckley scored 4 and Paul Spiller (Clevedon) achieved 3 points.

P Chaplin - D Norman
WECU Major 1994

1.♗c3 d5 2.e4 d4 3.♗ce2 e5 4.♗g3 ♗f6
5.♗f3 ♗d6 6.♗c4 c5 7.d3 0-0 8.♗g5 ♗c6
9.0-0 a6 10.c3 ♗e7 11.a4 ♗d6 12.♗h4 g6
13.♗h6 ♗e8 14.f4 ♗e6 15.♗xe6 fxe6
16.f5 exf5 17.♗b3+ ♗h8 18.♗hxf5 gxf5
19.♗xf5 1-0

Other Results

At the Teignmouth Quickplay, Robert Pritchard came 2nd in the under 11, with 5/6, and Matthew Pritchard scored 3½. Richard Colfer came 2nd in the Bridgwater Under 13 tournament, and has been invited to play for the England Under 13 team in Norway this June. We will report on his success in the next issue. Tom Bourne is the Welsh Under 10 champion, giving Bristol a national champion for the second year running. Matthew Pritchard came second in the same event, and Adam Williams scored 3/5 in the under 9 championship. Oliver Bright and Richard Colfer played in the BCF Junior Squad tournament at Marlborough. Oliver scored 4/7 in the Under 12, beating the British Under 11 Champion Simon Armour in the first round. Richard got 2½/6 against strong opposition in the Under 14/16.

Bristol Junior League

The Junior League season finished with a shock result in the Knock-out, with Henbury beating Marlwood on board count after losing two games early on. Marlwood made a heroic performance in the League, coming first in the top two divisions and second in the other two. Bristol Grammar B won the third division title by a point, and Nailsea took the honours in Division 4.

Division 1: Marlwood A 19/20, KLB A 16;
Division 2: Marlwood B 16/20, Speedwell A 14; **Division 3:** Bristol Grammar B 22/24, Marlwood D 21; **Division 4:** Nailsea 14/20 (1st on tie-break), Marlwood E 14;

Knock-out: Henbury Vic York Cup (team quickplay): Marlwood

Letters to the Editor



Letters have been edited for the purposes of clarity and space.

Dear Sir,

League Tournaments

I have been involved in a number of meetings at which the format of the League Congress, and now the Quickplay, has been discussed. I am always being told that players of medium strength will not play in a tournament against the strong players because they will not enter unless they have a realistic chance of winning, irrespective of the possibility of there being generous grading prizes. Surely this is not true - have they no ambitions, or has nobody asked them?

Playing against strong players is the best way to improve and the occasional victory is great for the ego. Playing against weaker players and players of the same strength is less stimulating, particularly if you have played these players many times before.

The result of this segregation is small groups of familiar faces involved in their own private battles, and frankly I think the tournaments are much less interesting than they might be as a result. Perhaps the worst example was the Quickplay, which although generally a success, had a top section of only ten players, which made the Swiss system unsatisfactory and led to a prize fund considerably smaller than both the Major and Minor sections.

Surely it would have been more exciting for everyone to have seen Graham Wilkinson *et al* creating havoc among the top players and to see how good some of the juniors are. If others agree with me they should make the point to any member of the League Management Committee or the Chess Times Editor.

David Collier Clifton

Dear Sir,

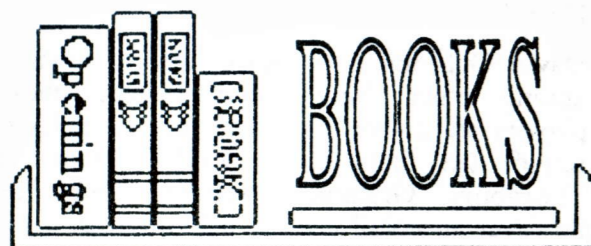
David Goldring is working hard to ensure, among other things, that Bristol chess players are aware that Marlwood is a local school (in fact the direct successor of Thornbury Grammar School). He has however an uphill task as it is obvious most Bristol chess players have no idea where Marlwood School is and hence, I believe, the omission from your recent Bristol junior list of one of Bristol's most promising juniors, Richard Colfer, age 12, grade 124. He is a member of the BCF junior squad and played for an England junior team against the Wales under-16 team last summer. Richard led the Bristol under-14 team against East Wales and the Gloucestershire under-14 team at the West of England jamboree at Taunton. He has also just been invited to join an England BCF U12/U13 team on a trip to Norway this summer.

N J Colfer

Rudgeway, Bristol

The Editor replies: I hope you will not be surprised to hear the reason for omission was not a silly attempt to get at Marlwood. When I asked the BCF last August if they would supply me with the Bristol grades, I requested the Bristol League clubs, plus those listed as Bristol Juniors (but not any specific schools). This should have picked up all those who played in the Bristol Junior League, but obviously failed to include Richard and may well have missed some others. Add a computer and stir for a few minutes, and you end up with the list printed in the last issue. I'm always happy to put the record straight, so here is a revised list of the top Bristol juniors:

	Name	Club	Age	Grd
1	RUDD JACK	SOUTH BRISTOL	14	190
2	CHAPLIN PETER	CLEVEDON	15	136
3	ROBERTS SHANE	COSSHAM	99	133
4	LOOK MATTHEW J	KEYNSHAM	15	131
5	COLFER RICHARD	MARLWOOD SCH	12	124
6	BICKNELL CARL	BRISTOL JUNIORS	17	118
7	MORGANS ANDREW	BRISTOL JUNIORS	15	114
8	JOHNSON JODY	BRISTOL JUNIORS	14	113
	TOLLEY ANTHONY	BRISTOL JUNIORS	15	113
10	DUGDALE A	THORNBURY	99	110
11	GROVE STEPHEN	BRISTOL JUNIORS	17	109
12	FLETCHER EDWIN A	CLEVEDON	14	107
13	JONES ANNA	BRISTOL JUNIORS	13	104
14	CHIDGEY GRANT	BRISTOL JUNIORS	14	101
15	WILSON D	CLIFTON	99	99
	WOOD STEVEN	BRISTOL JUNIORS	16	99



WINNING WITH THE SLAV

Yuri Markov, Boris Schipkov

Batsford 1994 £12.99 160 pp

This is the first Batsford book dealing with the Slav since Glenn Flear's *The Slav for the Tournament Player* in 1988. The latter is for me a near classic - readable, well organised, and a book more about chess than lines. Flear clearly put a lot of work into it, and I loved it at first sight. Inevitably I found myself comparing the new book by the two Siberian writers (M&S) with Flear's book, but this turned out to be a mistake.

I would highly recommend any aspiring club player to have a good look at the Slav (1.d4 d5 2.c4 c6). It is a very lively opening, with a good variety of strategic and tactical ideas, possibly one of the least played sound defences to 1.d4 at club level. It can also be wheeled out in some form against 1.f3 and 1.c4. As White, having a constructive plan against it is an essential part of any d4 player's repertoire. And even the so-called 'boring' Exchange variation has interest for both Black and White if played with energy.

As M&S say, winning with the Slav requires good technique, and there is no better way to improve your technique than by playing the Slav.

Winning with the Slav has a structure that will be familiar to readers of recent Batsford opening books. There is a brief introduction, then a chapter on basic ideas, followed by nine chapters analysing the main variations, based on key games given in full. The book ends with a rather terse index of variations, and - typically but alas - no index of games.

Typography and layout is generally OK, although the rather large typeface means more page-turning, less content and overdone hyphenation eg 'counteratt-ack'.

The introduction was somewhat spoiled for me by a contrived analogy to the character of the Slav people. Unfortunately this is followed by some patronising teacher text: "What basic strategic plans for both Black and White in the Slav Defence can you see in the following games?" It's difficult to tell if this is a problem with the original text or the translation, and maybe I am more sensitive than I should be. But I buy chess books like this for the words as much as the chess, and I like them to flow not grate.

The chapter on basic strategic ideas, is a brave attempt to present some underlying concepts before diving into detail. Unfortunately, the detail obviously wasn't in on the plan, and has crept in anyway. Apart from getting in the way of the basic ideas, many of the eleven games in this chapter are referred back to from the main text, rather than being shown in context.

M&S talk about strategic ideas throughout the book, but I generally found their comments dry and semi-mechanistic, adding less interest and value than the generous prose of Flear. Let me give you an example. On the Exchange Variation, to which a correct attitude is essential if you are to successfully play the Slav, see which of the following makes you want to play it?

Flear: "The first comment to make about this ... is that it isn't so easy to get a draw as Black ... Strong players with the White pieces often play the exchange variation to win and if the second player is playing only with the idea of exchanging pieces or keeping the symmetry for a draw he can get into trouble ... I hope the ideas suggested and analysed in this chapter will enable both White and Black to play interesting chess and seek the whole point."

M&S: "White liquidates the central tension and creates a symmetrical position, trying to make use of this spare tempo. However, his resources are limited and Black often equalizes."

So I don't like M&S? Well, that's where I started from, and my first impressions were poor. But the more I got into it, the more I realised that the new book was attempting a much bigger job than was Flear.

M&S wins hands down in some areas. First, navigating around Flear can be a pain, as the example games are not referenced. M&S on the other hand is adequately sign-posted, without resorting to outmoded hierarchical references.

More importantly, M&S contains far more raw material, and therefore much more comprehensive coverage. There are masses of very recent lines and analysis, some of them doubtless contributed by our Graham (Burgess), the technical editor.

For instance, M&S's coverage of the Winawer Countergambit (3.d3 e5!?) is based on a great deal of modern praxis in the late 80s/early 90s. Flear dismisses 4.de, for example, with one line from 1960, whereas M&S take several pages to prove it ain't that simple - try playing through Kasparov-Nikolic 1992, for instance. And if you like whacky new moves, the book is worth buying just for 8...f7!, the move that revived the Winawer in the game Carlsson-Engqvist 1988.

There are many other areas where there have been significant recent developments, and which are given generous coverage in M&S. For instance, the Geller gambit (3.d3 c6 4.f3 de 5.e4!?) has been handled much more craftily by White since Flear's day.

Not surprisingly, though, the biggest area of growth is in the main line (5.a4 f5), a major workhorse of the modern grandmaster for some years. Some of the ideas and evaluations have changed dramatically; for example Kasparov's new ideas in the Dutch variation (6.e3) and the explosion of examples of the highly tactical line 6.e5 e6 7.f3 b4 8.e4 xe4!

All these areas are handled with accuracy and thoroughness by M&S. On the other hand, M&S sometimes ignore areas dwelt on by Flear when there have been no recent examples.

The very best feature of M&S is the generous quota of full-length annotated games - no less than 76 altogether! If you can't have elegant text, then this is the next best way of making an opening book more interesting than ECO.

My conclusion? If you don't already play the Slav, and want to give it serious consideration, buy Flear's book first - M&S is too dense and opaque for first time use.

But if you do play the Slav, as White or Black, *Winning with the Slav* is well worth buying, and will give your knowledge of this dynamic opening a major boost.

Alan Williams

Results - continued

Division 4: Sun Life B 2 Keynsham B 4; Keynsham B 1 Nailsea C 5; Nailsea C 4 Downend C 2; Hanham C 3½ Nailsea C 2½; Horfield D 4 Keynsham B 2; Grendel C 4½ Hanham C 1½; University C 3½ Horfield D 2½; Harambee A 6 Sea Mills B 0; Downend C 4 Harambee A 2; Keynsham B 4 Sun Life B 2; Sea Mills B 3 Nailsea C 3; Downend C 2 University C 4; Horfield D 2½ Grendel C 3½; Keynsham B 3 Hanham C 3; Horfield D 4½ Harambee A 1½; Sun Life B 1½ Nailsea C 4½; Sea Mills B 1½ University C 4½; Grendel C 3 Sun Life B 3; Hanham C 2½ Downend C 3½; Harambee A 4 Nailsea C 2; Grendel C 4½ Harambee A 1½; Nailsea C 3½ Keynsham B 2½; Horfield D 4½ Hanham C 1½; Sun Life B 3 Sea Mills B 3; Downend C 3 Horfield D 3; University C 3½ Grendel C 2½.

Division 5: University D 2½ B Royals 3½; Nailsea D 2½ B Royals 3½; B Royals 2 University D 4; Civil Service 3 Cabot 3; University D 2 Civil Service 3 (1A); Clevedon C 3½ Hanham D 2½; Nailsea D 3 Hanham D 3; Thornbury C 5 University D 1; B Royals 3 S Bristol C 3; Nailsea D 3 Cabot 3; Grendel D 3½ University D 2½; S Bristol C 3 Hanham D 3; Clevedon C 3½ Civil Service 2½; University D 2½ Clevedon C 3½; Cabot 4½ B Royals 1½; University D 3½ Hanham D 2½; Thornbury C 4 S Bristol C 2; B Royals 5½ Grendel D ½; Civil Service 3 Nailsea D 3; Cabot 4½ Thornbury C 1½; B Royals 3 Clevedon C 3; Grendel D 6 Civil Service 0; Nailsea D ½ Thornbury C 5½; Hanham D 2 Grendel D 1 (3A); S Bristol C 4½ Civil Service ½ (1A); Clevedon C 3½ Cabot 2½; Thornbury C 2½ B Royals 3½; University D 4½ Nailsea D 1½.

Division 6: Harambee B 1 Keynsham C 5; Grendel F 3 Harambee B 3; Downend E 1 University E 5; University G 3 Grendel F 3; Clifton E 1½ Horfield E 4½; Harambee B 3 University F 3; Downend D 4½ Harambee B 1½; Horfield E 2 University E 4; Grendel E 0 University G 6; Keynsham C 5 Yate A 1; Clifton E 4 Downend E 2; University F 5 Grendel F 1; Grendel E 4 Harambee B 2; University G 3 Horfield E 3; Downend D 3 University F 3;

continued on page 20

Frank Palm's LETTER FROM HANNOVER

Dear Friends,

This time I'd like to tell you something about Anatoly Karpov's disappointing debut in the Bundesliga.

Decision in the Bundesliga: dull Karpov couldn't stop Cologne's march to victory

Every year, from its creation, the Bundesliga (16 teams) could be divided into a small top group, upper and lower midfield, and predictable relegation candidates. During the last few years, the race for the championship has been between Bavaria Munich and Cologne-Porz, and Munich was usually successful. This season Stadthagen interrupted this long-time duel, and the top of the Bundesliga became a triumvirate. As expected, the three are beating all the other teams, although Stadthagen had to be content with a 4-4 draw versus Empor Berlin, which is the fourth strongest team with Kramnik and Shirov on its top boards. But it was quite clear from the beginning of the season that only the direct encounters between the top three would decide the championship.

The first of these took place in Munich on February 26, 1994. Contrary to former seasons, Munich were easy prey for Cologne, who had no difficulties in drawing six games and winning two. Just one double round later, the next of the three decisive matches was feverishly awaited by the German chess community; Stadthagen had to play in Cologne on March 19, fielding for the first time their joker, Anatoly Karpov, on board one!

But the FIDE champion, communicating in rather rough English, possibly mixed up *first board* and *first bored*. Playing with White against the young German GM, Christopher Lutz, he chose a not-at-all challenging line of the Slav. Consuming the game (1/2-1/2, 45

moves) might be a substitute for some strong sleeping pills, so I won't bore you with a waste of space. Stadthagen scored only two points on the top four boards, and Cologne once more demonstrated its special strength on the bottom four by scoring 3 1/2 points there. Next day, Stadthagen worked off their frustration against poor Koblenz, one of the relegation favourites. Stadthagen won 7-1, but Karpov kept on being unimpressive, drawing versus the Lithuanian GM, Eduard Rozenthalis.

I think top GMs are of great importance for a first division, both for the high standard of games and for further popularising chess. But therefore it's indispensable that they perform as convincingly as possible. To guarantee this, they should be paid for points and not, as usually practised, for simply appearing. And for the desired PR-effect, the stars should perform like stars, i.e. entertainingly. Our good old drearier, the honourable FIDE champion, however, has the charisma of a tax collector or, I beg your pardon, of British, as well as German, party leaders. Shortly after the Saturday match, Karpov agreed to an improvised press conference. But asked about his Linares success and his private, as well as professional, plans, he produced nothing but "I played well", "may be", "don't know", "we'll see". Imagine Anatoly in a chess commercial on TV!

Two double-rounds are still to be played, but no one believes Cologne might stumble against one of the weaker teams. So Stadthagen and Munich can fight for only second place at the Final round on May 7.

If you want to bore readers, write articles without games. So here's one from the present season, especially interesting for King's Indian theorists, and finished by an outstanding endgame combination.

E Lobron - Uhlmann
Stadthagen - Dresden, Board 2, 1994

1.d4 ♘f6 2.c4 g6 3.♗c3 ♘g7 4.e4 d6 5.♗f3 0-0 6.♗e2 e5 7.0-0 ♗c6 8.d5 ♗e7 9.♗d2 a5 10.a3 ♗d7?

According to the Hannoverian KI expert, Friedmar Schirm, the plan started with this move looks doubtful. Black has to find a

more satisfying alternative here.

11.♖b1 a4 12.b4 axb3 13.♗xb3 c5 14.dxc6 ♗xc6 15.♙d3 ♗h5 16.♗xh5 gxh5 17.♖d1!

Much better than 17.♙h3 in Stohl-Uhlmann, 1990, which was later won by Black.

17...f5 18.♗g5 ♙e8 19.♗xe7 ♙xe7 20.♗d5 ♙g5 21.♗d2 ♙h8 22.exf5 ♙xf5 23.♙xf5 ♖xf5 24.♗e4 ♗f8 25.♖d3 ♖f7 26.h4 ♖a5 27.♖b6 ♗e7 28.g3 ♗d8 29.♖b4 ♖d7 30.f3 ♙g7 31.♙g2 ♙g6 32.♖b2 ♙f5 33.♖bd2 ♙e6 34.♙h3 h6 35.♗dc3 ♗e7 36.♗d5 time trouble. 36...♗d8 37.♙g2 ♙f7 38.♗b4 ♗xe4

39.fxe4 ♙e6 40.♖f3 ♖c5 Black offered a draw. White refused. 41.♖f5 ♖xc4 42.♖xh5 ♖h7 43.♖e2 ♗b6 44.g4 ♗d4 45.♗d5 ♖c8 46.♙h3 ♖a8 47.g5! ♙f7?? 48.g6+! ♙xg6 49.♖g2+ ♙f7 50.♖f5+ ♙e6 51.♖g6+ ♙d7 52.♗f6+ ♙c6

Among experienced players, at least grandmasters, Black should resign here. But for some it's too hard to lose gracefully. Lobron now executed a remarkable penalty.

53.♗xh7 ♖xa3+ 54.♖g3 ♖a8 55.♗f6 b5 56.♗d5 ♖b8 57.♗b4+ ♙b6 58.♖f7 ♗c5 59.♗d5+ ♙a5 60.♖a7+ 1-0

Next time: Frank on German league and club chess, life, the universe...

League Tables

includes all received and decided results up to 30/4/94

Division 1

	Pld	DP	Pts
DOWNEND A	17	3	31
Clifton B	16	1	23
University A	18	33	21
Horfield A	17	6	20
Grendel A	17	-	19
Clifton A	16	3	17
Bath	15	-	16
South Bristol A	16	-	12
Sun Life A	18	5	3
Sea Mills A	17	24	-1

Division 4

	Pld	DP	Pts
UNIVERSITY C	18	2	30
Grendel C	18	4	28
Downend C	18	8	24
Horfield D	18	12	23
Hanham C	18	-	19
Keynsham B	17	2	15
Harambee A	18	1	15
Nailsea C	18	-	11
Sun Life B	18	-	9
Sea Mills B	17	1	3

Division 7

	Pld	DP	Pts
General Electric	11	2	15
Grendel G	11	8	15
Nailsea E	11	12	10
Yate B	10	-	9
University H	11	31	1

Division 2

	Pld	DP	Pts
HANHAM A	17	-	27
Horfield B	18	6	23
Cossham A	18	-	21
Thornbury A	18	-	21
Nailsea A	17	4	20
South Bristol B	18	8	17
Grendel B	16	-	14
Clevedon A	16	3	11
Keynsham A	17	4	10
Downend B	17	-	8

Division 5

	Pld	DP	Pts
STH BRISTOL C	17	3	26
Thornbury C	18	-	21
Bristol Royals	17	4	19
Clevedon C	18	4	19
Cabot	17	4	17
Grendel D	17	40	17
University D	17	8	16
Nailsea D	18	-	14
Civil Service	17	3	12
Hanham D	16	12	6

Where relegation or promotion is decided, the teams are shown in bold. Division champions are in upper case. All results subject to appeals or additional defaults.

Division 3

	Pld	DP	Pts
Cossham B	16	-	26
University B	17	-	26
Horfield C	16	-	22
Nailsea B	16	1	19
Thornbury B	15	-	17
Clifton C	18	-	17
Cossham C	17	-	14
Hanham B	17	-	10
Clevedon B	16	8	8
Clifton D	18	6	7

Division 6

	Pld	DP	Pts
UNIVERSITY E	22	1	34
University G	22	1	33
Grendel E	21	6	32
Horfield E	22	5	27
University F	20	6	22
Downend D	21	3	22
Keynsham C	21	2	21
Yate A	22	-	19
Harambee B	20	28	14
Clifton E	21	17	9
Grendel F	22	-	9
Downend E	22	24	9

DP = Default Penalty Points. One league point has been deducted for every ten DPs.

Gardeners buried

Bristol shot from the foot of the table by winning both its matches in the National Chess League weekend in Liverpool. Covent Garden lost both its matches to sink to the bottom, and the other teams could only manage one win and one loss each.

On the Saturday, Bristol thrashed Covent Garden by 7-1, and then caught up with third-placed North West Eagles by beating them 4½-3½.

Barbican remain top, but were surprisingly beaten 5-3 by Slough.

	P	W	D	L	F	A	Pt
Barbican	8	6	0	2	41	23	12
Invicta Knights	8	5	1	2	36½	27½	11
Northwest Eagles	8	3	1	4	33½	30½	7
Bristol	8	3	1	4	30	34	7
Slough	8	2	2	4	29	35	6
Covent Garden	8	2	1	5	22	42	5

Section 2 - Answers

SC Roberts - Chaplin:

30. ♖xf8+! ♔xf8 31. ♕f4+ ♔c8 32. ♕f7+ ♔d8 33. ♕f8+ ♔c7 34. ♕xe7+ ♔b6 35. ♕c5+ ♔a6 36. ♔c8+ ♕b7 37. ♔xb7+ ♔xb7 38. ♕c6+ ♔b8 39. ♔d7+# Fritz.

Brooks - Radford:

26. ♔f4! dxc3+ 27. e3 ♖xb7 28. ♔xd6 ♖xb1+ 29. ♕xb1 ♔xd6 30. ♕xf5±
White is winning. Fritz.

Diary

Use this column to advertise your events. It's free, but please send your entries in plenty of time to the Editor.

May 7-8. 4 NATIONS CHESS LEAGUE. Maidstone.

May 13-15. FROME Congress. Steve Boniface (0272) 515869.

May 25. LEAGUE AGM. Student's Union, Queen's Road.

May 28-30. COTSWOLD Congress, Stroud. R Powis 0453 762518.

Oct 15-16. 12th MARLWOOD Schools Tournament. David Goldring 0454 411392.

RUSSIAN CHESS CLOCKS

½-PRICE

£12 EACH

(p & p extra)

Also:

ROLL-UP BOARDS

STAUNTON

WOODEN PIECES

(at ½-price)

Paul Cordy
0222 869198

Results - continued

Grendel F 2½ Keynsham C 3½; University E 2½ Yate A 3½; Clifton E 1 University G 5; Grendel E 3 Horfield E 3; University F 2 Downend D 2 (2A); Grendel F 2½ Yate A 3½; University E 4 Clifton E 2; University F 5½ Harambee B ½; University G 6 Downend E 0; Horfield E 5½ Downend E ½; University E 3½ Downend D 2½; Keynsham C 4½ Clifton E 1½; Harambee B 4 Grendel F 2; University F 2 Grendel E 3 (1A); University G 3 University E 3; University F 5½ Horfield E ½; Downend E 2½ Grendel E 3½; Yate A 2½ Horfield E 3½; Downend D 4½ Clifton E 1½; Horfield E 2 Keynsham C 4; Harambee B 3½ Downend E 2½; Yate A 3½ Downend E 2½; Clifton E 1½ Grendel F 4½; Grendel E 4 Downend D 2; University G 4½ Clifton E 1½; Grendel F 1½ University E 4½.

Division 7: University H 1 General Elec 3; General Elec 1 Grendel G 3; University H 2 Yate B 2; Grendel G 2 Nailsea E 2; General Elec 4 University H 0; University H 1½ Yate B 2½; Grendel G 4 University H 0; Nailsea E 3 General Elec 1; Nailsea E 4 University H 0; Nailsea E 3 Yate B 1; General Elec 1½ Grendel G 2½; Nailsea E 1 General Elec 3; General Elec 2 Yate B 2; Grendel G 3 Yate B 1.